

Development of an improved method for quantitative analysis of skin blotting: Increasing reliability and applicability for skin assessment

著者	Ogai Kazuhiro, Matsumoto Masaru, Minematsu T., Kitamura Keiichiro, Kobayashi M., Sugama Junko, Sanada Hiromi
journal or publication title	International Journal of Cosmetic Science
volume	37
number	4
page range	425-432
year	2015-08-01
URL	<a href="http://hdl.handle.net/2297/44237">http://hdl.handle.net/2297/44237</a>

doi: 10.1111/ics.12217

**Development of an improved method for quantitative analysis of skin blotting: Increasing reliability and applicability for skin assessment**

Ogai, K. , Matsumoto, M., Minematsu, T.,  
Kitamura, K., Kobayashi, M., Sugama, J.,  
Sanada, H.

**Abstract**

**OBJECTIVE:** A novel skin assessment tool named “skin blotting” has been recently developed, which can easily predict the skin status to avoid its deterioration. The aim of this study is to propose a normalization method for skin blotting to compensate for individual differences that can hamper the quantitative comparisons and clinical applications.

**METHODS:** To normalize individual differences, we utilized a total protein as a “normalizer” with calibration curves. For evaluation, we performed a simple simulation experiment, in which the same concentration of a protein of interest [tumor necrosis factor (TNF)- $\alpha$ ] was applied at different volumes as a virtual individual difference. Moreover, to demonstrate the applicability of this normalization, male volunteers were recruited for skin blotting followed by the estimation of TNF- $\alpha$  with normalization.

**RESULTS:** We obtained good calibration curves for total protein ( $R^2 = 0.995$ ) and TNF- $\alpha$  ( $R^2 = 0.997$ ), both of which were necessary for an exact quantification. In the simulation experiment, we estimated the exact concentration of TNF- $\alpha$  regardless of the applied volume, demonstrating the applicability of this normalization method in skin blotting. Further, skin blotting on human subjects showed a wide range of variation in the total protein content, although the normalization was thought to reduce such individual variations.

**CONCLUSION:** This study has proposed total protein normalization for skin blotting with calibration curves. This method may strengthen the quantitative performance of skin blotting, which may expand the applicability of this method as a skin assessment tool in broader fields, such as nursing and cosmetology.

**Key words:** Biotechnology/Fermentation; Safety testing; Skin blotting; Skin physiology/structure; Normalization

## Introduction

The skin is the largest organ of our body, serving as a barrier against several external invasions, such as mechanical, chemical, and bacterial insults. In addition, the skin participates in water retention, sensory acquisition, immune reaction, and the appearance of our body [1, 2]. In contrast, apparent skin disorders, such as wounds, burns, pressure ulcers [3], psoriasis [4], dermatitis [5], and infections can interfere with the function of the skin, cause secondary dysfunctions (e.g., pain, discomfort, and psychological uncertainty), and may ultimately deteriorate the quality of life [6-9]. Beside these drawbacks, the skin can also be fragile, and several conditions, such as obesity and aging can adversely affect skin integrity without any apparent symptoms. For example, a mouse model for obesity has shown severe difficulties, involving wound healing [10, 11] and the same has been equally true for human subjects [12]; obese subjects may have a higher prevalence of pressure ulcers [13] and a number of studies have reported the association between obesity and psoriasis [14]. Furthermore, it has been reported that the skin of obese people is continuously exposed to oxidative stress, collagen-degrading enzymes [15], and inflammatory cytokines, e.g., tumor necrosis factor- $\alpha$  (TNF- $\alpha$ ), all of which may be linked to skin weakness [16-20]. In another instance, skin maceration caused by incontinence leads to incontinence-associated dermatitis, which can be prevented by assessing the reduction of skin barrier function using a simple skin assessment tool [21]. From these findings, it may be important to assess the property of skin in a biochemical manner before the appearance of obvious drawbacks such as wound development that may affect the quality of life.

Under these circumstances, several types of non-invasive skin assessment tools have been thus developed using laser analysis [22], skin fluorescence [23, 24], trans-epidermal water loss [25], confocal microscopy [23], and ultrasonography [19, 20]. However, all these assessment tools require specialized equipment and training; thus, they are difficult to manage as daily assessment tools.

Minematsu et al. have recently developed a novel, non-invasive, and easy-to-handle skin assessment method called “skin blotting” [26]. Soluble proteins (e.g., TNF- $\alpha$ , nerve growth

1  
2  
3  
4 factor- $\beta$ , and matrix metalloproteinase-2) in the dermis and epidermis can leak by diffusion  
5 through the epidermis and follicles when the skin is slightly macerated [18, 27]. In this method,  
6 a prewettted nitrocellulose membrane is patched to the region of interest on the skin, which  
7 creates a slightly macerated state. Under such a condition, the soluble proteins that leak from the  
8 epidermis and dermis can be captured by the membrane. The proteins on the membrane can then  
9 be analyzed using immunoblot techniques. This method is similar to the tape stripping method  
10 [28]. However, the tape stripping method can only capture the proteins from the stratum  
11 corneum, the very superficial layer of the skin; with this method, the real-time assessment of  
12 deeper skin layers may be more difficult. In addition, the tape stripping may be relatively more  
13 invasive than skin blotting, particularly for the elderly, obese people, and infants because it  
14 peels the stratum corneum off the skin, which may reduce the barrier function.

15  
16  
17  
18  
19  
20  
21  
22  
23  
24  
25  
26  
27  
28  
29  
30  
31  
32  
33  
34  
35  
36  
37  
38  
39  
40  
41  
42  
43  
44  
45  
46  
47  
48  
49  
50  
51  
52  
53  
54  
55  
56  
57  
58  
59  
60

Considering the principle behind skin blotting, the quantitative analysis of skin blotting largely relies on the equality of the permeability of the proteins, the skin barrier function, and protein adsorption into the membrane. However, such equalities can be hardly achieved because skin conditions can greatly vary between individuals [29, 30]. Therefore, a “normalizer,” such as a housekeeping protein should be employed to eliminate these individual differences as much as possible. However, it is impossible to select specific proteins (e.g.,  $\beta$ -actin, broadly used in Western blotting) because these proteins generally do not leak from the cells unless the cells are disrupted. Considering such restrictive conditions, normalization could be achieved by quantifying the total protein content on the membrane, as performed in the tape stripping [28] and Sebutable methods [31]. Moreover, it is important to express the content of the protein of interest as an absolute quantity instead of using an arbitrary unit (i.e., intensity itself) because the intensity of immunodetection can vary according to the experimental conditions and examiners, thereby making it difficult to compare results among individuals and experiments unless performed by the same examiner at the same time.

In this study, therefore, we attempt to facilitate a normalization method of skin blotting by quantifying the total protein content on the membrane with a recent low-background protein staining technique [32]; we also attempt to express the protein content as an absolute quantity

1  
2  
3  
4 using calibration curves.  
5  
6  
7

## 8 **Methods**

### 9 *Skin blotting with human subjects*

10 To evaluate normalization using the total protein content on the membrane, skin blotting on  
11 human subjects was performed as previously described [26] with the approval of the Medical  
12 Ethics Committee of Kanazawa University (#430); we also followed the Declaration of Helsinki.  
13 Nineteen healthy males (age:  $43.7 \pm 14.0$ ) with a body mass index (BMI) of  $<25$  (range: 20.8–  
14 24.7) and five obese males (age:  $36.6 \pm 7.99$ ) with a BMI of  $>30$  (range: 30.9–34.7) were  
15 recruited, in which a distinct difference in the level of chronic inflammation (i.e., TNF- $\alpha$ ) was  
16 expected. A written informed consent was obtained from each participant before surveillance.  
17 After the completion of a verbal questionnaire about age and sex and the measurement of height  
18 and body weight (for a BMI calculation), a nitrocellulose membrane (1 cm  $\times$  1 cm; Bio-Rad  
19 Laboratories, CA, USA) prewetted with 10  $\mu$ l saline was attached to the skin at 2 cm left to the  
20 navel, where the differences in dermal structure and level of oxidative stress were observed [20],  
21 for 10 min. The membranes were stored at 4°C until further analyses.  
22  
23  
24  
25  
26  
27  
28  
29  
30  
31  
32  
33  
34  
35  
36  
37  
38

### 39 *Calibration curve*

40 For the quantitative analysis of the total protein content and TNF- $\alpha$ , calibration curves were  
41 prepared for each item. In brief, bovine serum albumin (BSA; Nacalai Tesque, Kyoto, Japan)  
42 and TNF- $\alpha$  peptide (Santa Cruz Biotechnology, CA, USA) were used as the total and TNF- $\alpha$   
43 protein standards, respectively. Serial dilutions of BSA (800, 320, and 128 ng  $\mu$ l $^{-1}$ ) and TNF- $\alpha$   
44 (1600, 640, and 256 pg  $\mu$ l $^{-1}$ ) were prepared, and 1  $\mu$ l of each solution was dropped onto separate  
45 membranes. These membranes were then analyzed by the method described below.  
46  
47  
48  
49  
50  
51  
52

### 53 *Membrane analysis with total protein staining*

54 Membrane analysis was performed as previously described [26] with a modification for the total  
55 protein staining. In brief, the membranes (1 cm  $\times$  1 cm) after skin blotting were first stained  
56  
57  
58  
59  
60

1  
2  
3  
4 with 3% (*w/v*) Reactive Brown 10 [32] (RB10; Sigma–Aldrich, MO, USA) in water for 2 min.  
5  
6 They were then washed with water for several times until the background staining was bleached.  
7  
8 For densitometry of the total protein content, scanned images of the membranes was obtained  
9  
10 with a graphics scanner (GT-S640, Seiko Epson Corp., Nagano, Japan) with no gamma  
11  
12 correction. Next, the membranes were washed with 0.1% (*v/v*) Tween-20 in Tris buffered saline  
13  
14 (pH = 7.4) for 5 min, followed by blocking with Blocking One (Nacalai Tesque) for 30 min and  
15  
16 incubation with anti-TNF- $\alpha$  antibody (1:200; Santa Cruz Biotechnology) at 4°C overnight. On  
17  
18 the next day, the membranes were washed and incubated with horseradish  
19  
20 peroxidase-conjugated secondary antibody (1:1000; Santa Cruz Biotechnology) at room  
21  
22 temperature for 60 min. Following repeated washing, the signals were detected with Clarity  
23  
24 Western ECL Substrate (Bio-Rad Laboratories) and the ChemiDoc MP system (Bio-Rad  
25  
26 Laboratories). The total protein and TNF- $\alpha$  images were densitometrically analyzed using  
27  
28 ImageJ software (National Institutes of Health, MD, USA). The cumulative signal intensity of  
29  
30 total protein or TNF- $\alpha$  was calculated over the entire surface except the edge of each membrane  
31  
32 with the same area, which enables the direct comparison of spotted (e.g., membranes for a  
33  
34 calibration curve and the punctate signals of TNF- $\alpha$ ) and diffuse (e.g., background staining)  
35  
36 signals.

#### 37 38 39 *Evaluation for total protein normalization*

40  
41 To evaluate the effectiveness of total protein normalization, we performed a simple simulation  
42  
43 experiment as follows. We prepared a mixture of BSA and TNF- $\alpha$  as a simulant skin protein.  
44  
45 Two different concentrations of TNF- $\alpha$  (700 pg  $\mu\text{l}^{-1}$  as “high” and 350 pg  $\mu\text{l}^{-1}$  as “low”) in the  
46  
47 same concentration of BSA (300 ng  $\mu\text{l}^{-1}$ ) were prepared to simulate the physiological variations  
48  
49 of TNF- $\alpha$ . For the simulation of protein adsorption to the membrane, different volumes (1, 1.5,  
50  
51 or 2  $\mu\text{l}$ ) of the mixture were dropped onto the separate membranes and analyzed as described  
52  
53 above. Total protein normalization was then performed by simply dividing the amount of TNF- $\alpha$   
54  
55 by that of BSA.  
56  
57  
58  
59  
60

### *Statistical analysis*

We used GraphPad Prism software (version 6.0f; GraphPad Software, Inc., CA, USA) to calculate the calibration curves and to compare the two groups in simulation experiments by two-way analysis of variance followed by Tukey's *post hoc* test. In skin blotting analyses for human subjects, Student's *t*-test or Mann–Whitney *U* test was used for comparison between healthy and obese groups after the *F*-test of equality of variances. For logarithmic approximation, we used a two-parameter formula  $Y = a - b \cdot \log X$ . A *p* value of <0.05 was considered statistically significant.

## **Results**

### *Calibration curves for total protein (BSA) and TNF- $\alpha$*

First, we serially diluted BSA and TNF- $\alpha$  and prepared calibration curves with a fixed amount of BSA or TNF- $\alpha$  (*x*-axis) versus the signal intensity calculated by ImageJ software (*y*-axis). For total protein staining, we obtained visible spots whose intensity correlated to the amount of BSA (Fig. 1A; RB10), whereas no positive staining was observed on the TNF- $\alpha$ -spotted membranes (Fig. 1B; RB10). Further, we obtained a good (adjusted coefficient of determination  $R^2 = 0.995$ ,  $n = 3$ ) calibration curve with a logarithmic approximation (Fig. 1A). In the same manner, a calibration curve of TNF- $\alpha$  was obtained (Fig. 1B; adjusted  $R^2 = 0.997$ ,  $n = 3$ ). Positive signals of TNF- $\alpha$  immunoblotting were detected only on TNF- $\alpha$ -spotted membranes (Fig. 1B; TNF- $\alpha$ ) but not on the membranes with a drop of BSA solution (Fig. 1A; TNF- $\alpha$ ). The following experiments were performed with the *ad hoc* calibration curves of BSA and TNF- $\alpha$ .

### *Efficacy of total protein normalization*

To evaluate the effectiveness of total protein normalization, a simple model was prepared (Fig. 2A, B). We prepared two different concentrations of TNF- $\alpha$  (700 pg  $\mu\text{l}^{-1}$  as “high” and 350 pg  $\mu\text{l}^{-1}$  as “low”) in a fixed concentration of BSA (300 ng  $\mu\text{l}^{-1}$ ) to simulate the physiological variation of TNF- $\alpha$ . These mixtures were dropped onto separate membranes with different volumes (1, 1.5, or 2  $\mu\text{l}$ ), which reflected the protein adsorption difference to the membrane (Fig.



1  
2  
3  
4  
5  
6  
7  
8  
9  
10  
11  
12  
13  
14  
15  
16  
17  
18  
19  
20  
21  
22  
23  
24  
25  
26  
27  
28  
29  
30  
31  
32  
33  
34  
35  
36  
37  
38  
39  
40  
41  
42  
43  
44  
45  
46  
47  
48  
49  
50  
51  
52  
53  
54  
55  
56  
57  
58  
59  
60

2B). As a result of this quantification, the calculated amount of TNF- $\alpha$  was proportional to the droplet volume (Fig. 2C). The quantification of BSA also showed a similar result in which the amount of BSA reflected the applied volume of mixture to the membrane (Fig. 2D). After total protein normalization, the normalized amount of TNF- $\alpha$  showed comparable values regardless of the droplet volume (Fig. 2E; n.s.,  $p = 0.70$ ), whereas high and low concentrations of TNF- $\alpha$  could be distinguished (Fig. 2E;  $p < 0.0001$  between “high” and “low” TNF- $\alpha$ ). This simple simulation showed that total protein normalization could eliminate the effect of the droplet volume (i.e., differences in protein adsorption to the membrane).

#### *Total protein normalization after skin blotting*

We wanted to demonstrate the applicability of total protein normalization in practical skin blotting among human subjects. As a result of skin blotting on 19 healthy and 5 obese male volunteers, we confirmed a wide range of variation in the total protein content on the membrane (Fig. 3A, B). After total protein staining, we successfully detected signals of TNF- $\alpha$  by immunoblotting (Fig. 3C) except for six undetected samples (i.e., under the detection limit). The quantification of TNF- $\alpha$  without normalization did not show the significant difference between healthy and obese people (Fig. 3D;  $p = 0.69$ , Mann–Whitney  $U$  test). After normalization, however, the difference became significant (Fig. 3E;  $p = 0.006$ , Student’s  $t$ -test).

#### **Discussion**

The aim of this study was to improve the quantitative performance of skin blotting [26], which is required for its general application as a skin assessment tool. To achieve this, we employed a novel, sensitive, and selective dye to stain the total protein on the membrane, which was then used as a normalizer for the protein of interest. We then evaluated the applicability of normalization through simulation and clinical experiments.

#### *Why should total protein normalization be employed for skin blotting?*

Skin blotting is a non-invasive and easy-to-handle method, which can evaluate the soluble

1  
2  
3  
4 protein content in and on the skin [26] and now has been used in several studies to show the  
5  
6 properties of skin inflammation [26, 27], soluble skin components, and skin remodeling-related  
7  
8 enzymes [18]. It has been reported that skin frailty is closely related to the degree of oxidative  
9  
10 stress [16, 19] and skin inflammation with cytokine secretion [11, 18, 28, 33], and that such  
11  
12 deteriorations were caused by obesity [16, 20, 34] and aging [18], both of which are now  
13  
14 increasing worldwide. Considering these situations, it will be of importance to assess skin  
15  
16 properties on a molecular biological basis (i.e., cytokines and gene expression) before the skin  
17  
18 shows apparent symptoms, such as delayed wound healing [35, 36], skin tears [18, 37], or  
19  
20 pressure ulcers [38]. For convenience and an ease of use, skin blotting may be an appropriate  
21  
22 method to easily assess the properties of skin before the skin deteriorates.

23  
24 The principle of skin blotting is based on the mild, temporal disruption of the skin  
25  
26 barrier by local maceration, which allows protein to leak from the epidermis and dermis.  
27  
28 However, the skin status, such as the skin barrier function and skin thickness can greatly vary  
29  
30 among individuals; for example, the number of wrinkles is associated with age, sex, and sun  
31  
32 exposure [29]; the water content of skin differs according to age and the places lived [30]; and  
33  
34 the thickness of the dermis is greater in overweight ( $25 \leq \text{BMI} < 30$ ) people compared with  
35  
36 non-overweight ( $\text{BMI} < 25$ ) people [20]. Therefore, individual differences in skin properties  
37  
38 should be considered when comparing the content of the protein of interest (e.g., cytokines)  
39  
40 among individuals. In addition, protein adsorption to the membrane may be profoundly affected  
41  
42 by the nature of the membrane (e.g., moistness and temperature) and handling by the operator  
43  
44 (e.g., the force of membrane attachment). Considering such fluidity, it is difficult to compare the  
45  
46 results of different individuals unless a normalizer is employed. Some of the quantitative  
47  
48 methods for skin assessment involve normalization by the total protein content [28, 31].  
49  
50 Therefore, in this study, we attempted to employ the total protein content on the membrane as a  
51  
52 normalizer (Fig. 2A) as utilized in previous studies.

#### 53 54 *RB10 as a potential total protein staining in skin blotting*

55  
56 There are a number of staining methods for total protein, including Coomassie brilliant blue  
57  
58  
59  
60

1  
2  
3  
4 (CBB) R-250 [39], Ponceau S [40], colloidal gold [41], and SYPRO Ruby [42]. Of these  
5  
6 methods, we first tested the CBB method for total protein staining on the membrane; however,  
7  
8 the background staining was too high to distinguish a small amount of protein (i.e., CBB  
9  
10 staining was apparent even on the membrane without protein). Colloidal gold and SYPRO Ruby  
11  
12 staining are highly sensitive methods to detect total protein. However, the former takes at least  
13  
14 one hour and generally up to a day for protein staining, and the latter requires special imaging  
15  
16 equipment for signal detection. A novel method for total protein staining utilizing a fabric dye  
17  
18 RB10 has been recently proposed [32]. In this method, total protein can be stained under neutral  
19  
20 pH conditions, a milder environment than CBB (acidic); thus, the staining may not affect the  
21  
22 subsequent immunodetection process. The immunodetection of TNF- $\alpha$  after RB10 staining was  
23  
24 indeed successfully achieved (Fig. 3C). In addition, RB10 can easily be bleached by washing  
25  
26 with water where proteins do not exist. The sensitivity of RB10 may be considerably higher  
27  
28 than CBB as we could see a specific staining on the skin blotting membrane with RB10,  
29  
30 whereas CBB staining yielded such a high background pattern that we were unable to tell  
31  
32 whether the staining was due to proteins or the remaining dye. Moreover, the RB10 signal can  
33  
34 be scanned by a commercially available document scanner unless gamma correction is not  
35  
36 applied. Most importantly, the calibration curve showed a good linearity (Fig. 1), enabling the  
37  
38 reliable quantification of total protein on the membrane. Considering these advances, we  
39  
40 propose RB10 as a total protein staining method for individual normalization.  
41  
42

#### *Utilizing calibration curve for estimating protein of interest in skin blotting*

43  
44  
45 In the original method of skin blotting, the amount of the protein of interest detected by  
46  
47 immunoblotting was evaluated by its intensity. In this study, to ensure accuracy and to enable  
48  
49 inter-experimental comparison, which may be difficult using intensity quantification, we  
50  
51 attempted to express the content of the protein of interest as an absolute quantity (i.e., using  
52  
53 grams rather than an arbitrary unit). This could be achieved, like a total protein normalization,  
54  
55 by a calibration curve for the protein of interest (TNF- $\alpha$  in this study) that showed a good  
56  
57 linearity (Fig. 1B). This method may enable an easier comparison of the protein content in a  
58  
59  
60

1  
2  
3  
4 different experimental setup.  
5  
6  
7

#### 8 *Applicability of total protein normalization in skin blotting*

9

10 To evaluate the effectiveness of this normalization method, we performed a simple simulation  
11 experiment (Fig. 2B). In this method, we prepared two different concentrations of TNF- $\alpha$  (700  
12 pg  $\mu\text{l}^{-1}$  as a “high” and 350 pg  $\mu\text{l}^{-1}$  as a “low” samples) with the fixed concentration of BSA  
13 (300 ng  $\mu\text{l}^{-1}$ ). These mixtures were considered human samples with different TNF- $\alpha$   
14 concentrations. Next, we prepared three membranes and 1, 1.5, or 2  $\mu\text{l}$  of the mixture was  
15 dropped onto each membrane. The difference in the applied volume was expected to reflect  
16 individual differences in protein adsorption to the membrane. In this manner, the different  
17 amount of TNF- $\alpha$  would be detected as the volume differed: 700, 1050, or 1400 pg (in a “high”  
18 sample) and 350, 525, or 700 pg (in a “low” sample) of TNF- $\alpha$  on the 1-, 1.5-, or 2- $\mu\text{l}$   
19 membrane, respectively, although the sample was the same and thus those membranes should  
20 have shown the same results. The different amount of TNF- $\alpha$  was indeed detected in the same  
21 sample but with a different droplet volume (Fig. 2C). However, this apparent and false  
22 difference could be eliminated (Fig. 2E) by a total protein content that reflected the protein  
23 adsorption (Fig. 2D) proposed in this study (Fig. 2A). We should note that the different  
24 concentrations of TNF- $\alpha$  (“high” and “low”) were falsely reported to be the same amount if the  
25 applied volume was different (Fig. 2C; denoted by  $\xi$ ). Such false quantification could be  
26 avoided after total protein normalization was applied (Fig. 2E). From these results, it is  
27 plausible that total protein normalization in skin blotting can increase the quantitative  
28 performance by reducing individual instability caused by the difference in protein adsorption.  
29  
30  
31  
32  
33  
34  
35  
36  
37  
38  
39  
40  
41  
42  
43  
44  
45  
46

47 Next, we wanted to know the applicability of this normalization method to practical  
48 skin blotting in human participants. Therefore, we recruited healthy and obese male volunteers  
49 for the quantification of TNF- $\alpha$  with total protein normalization, because they reportedly show a  
50 distinct difference in skin property such as dermal structure and the level of oxidative stress in  
51 the abdominal skin [19, 20], and thus the different level of TNF- $\alpha$  was likewise considered  
52 plausible. As a result of skin blotting, we could observe a wide variation of total protein content  
53  
54  
55  
56  
57  
58  
59  
60

1  
2  
3  
4 on the skin blotting membrane (Fig. 3A, B). These results implied the requirement of  
5  
6 normalization. For example, the amount of TNF- $\alpha$  in Figs. 3C1 and 3C2 were almost the same  
7  
8 (1239 and 1046 pg per membrane, respectively); however, the total protein content of the  
9  
10 corresponding membranes (Fig. 3B1 and 3B2) were considerably different (97 and 239 ng per  
11  
12 membrane, respectively). As a result of normalization, these membranes were determined to  
13  
14 have a different concentration of TNF- $\alpha$  [12.7 and 4.4 (pg ng<sup>-1</sup>) per membrane, respectively],  
15  
16 which could not have been achieved without total protein staining. In contrast, the membrane  
17  
18 shown in Fig. 3C2 had a higher level of TNF- $\alpha$  than that shown in Fig. 3C4 (1082 and 600 pg  
19  
20 per membrane, respectively). However, the total protein content (Fig. 3B2 and 3B4) were 239  
21  
22 and 134 ng per membrane, respectively; after normalization, the concentrations of TNF- $\alpha$  were  
23  
24 similar at 4.4 and 4.5 (pg ng<sup>-1</sup>) per membrane. Therefore, it is plausible that there would be an  
25  
26 erroneous quantification of TNF- $\alpha$  if normalization was not employed.

27  
28 Because obesity can increase the level of TNF- $\alpha$  [[43-45] and unpublished data], it is  
29  
30 feasible that the amount of TNF- $\alpha$  in the skin blotting is greater in the obese people (BMI >30)  
31  
32 than healthy people (BMI <25). However, we observed no difference in TNF- $\alpha$  amount itself  
33  
34 between healthy and obese groups (Fig. 3D). After normalization, the higher level of normalized  
35  
36 TNF- $\alpha$  was observed in obese males compared to healthy ones (Fig. 3E), which is consistent  
37  
38 with the previous findings. Although the target of this experiment was limited to males and the  
39  
40 number of obese males was very small ( $n = 5$ ), and thus it requires careful interpretation as a  
41  
42 clinical outcome, at least plausible results were obtained to show the applicability of total  
43  
44 protein normalization.

45  
46 From these results, it can be theorized that total protein normalization would be  
47  
48 beneficial for a more precise quantification of skin blotting, in that the individual differences in  
49  
50 protein adsorption to the membrane would become negligible.

#### 51 52 *Limitations of this study*

53  
54 As the protein of interest was also included in the “total protein”, it was possible that total  
55  
56 protein normalization may underestimate the content of the protein of interest. At least in this  
57  
58  
59  
60

1  
2  
3  
4 study, this was not the case because the total protein staining of TNF- $\alpha$  was below the detection  
5 limit (Fig. 1B, RB10; note no signals in TNF- $\alpha$ -spotted membranes). It may be necessary to  
6 make sure that the maximum concentration of the protein of interest is below the detection limit  
7 of total protein staining.  
8  
9  
10  
11

12 Another limitation of this study was that we could not verify this method in humans,  
13 as we did not know the exact amount of TNF- $\alpha$  on human skin unless we employed skin  
14 biopsies. An animal experiment in which the skin can be directly analyzed by histochemical  
15 assays may be further required to assure the accuracy of this method. Nevertheless, this  
16 normalization method appears to be one of the best candidates for the quantification of skin  
17 blotting (Figs. 2 and 3), in terms of reproducibility and manageability.  
18  
19  
20  
21  
22  
23

## 24 25 26 **Conclusion**

27 In conclusion, this study has proposed an easy and reproducible normalization method  
28 for quantitative skin blotting by analyzing the total protein content on the membrane with a  
29 recent protein staining dye. We believe that the addition of this method can strengthen the  
30 quantitative performance of skin blotting. We also believe that this method will make skin  
31 blotting easier and more usable in a broader field, such as nursing and cosmetology, for  
32 predicting the physiological state of skin and preventing skin disorders before they worsen.  
33  
34  
35  
36  
37  
38  
39  
40

## 41 **Conflict of interest**

42 The authors have declared that no competing interests exist.  
43  
44  
45

## 46 **References**

- 47  
48  
49 1. Chuong, C.M., Nickoloff, B.J., Elias, P.M., Goldsmith, L.A., Macher, E., Maderson,  
50 P.A., et al. What is the 'true' function of skin? *Exp Dermatol.* 11(2):159-87 (2002).  
51  
52 2. Madison, K.C. Barrier function of the skin: "la raison d'etre" of the epidermis. *J Invest*  
53 *Dermatol.* 121(2):231-41 (2003).  
54  
55 3. Iizaka, S., Sanada, H., Nakagami, G., Sekine, R., Koyanagi, H., Konya, C., et al.  
56  
57  
58  
59  
60

- 1  
2  
3  
4 Estimation of protein loss from wound fluid in older patients with severe pressure ulcers.  
5  
6 *Nutrition*. 26(9):890-5 (2010).  
7
- 8 4. Motta, S., Monti, M., Sesana, S., Mellesi, L., Ghidoni, R. and Caputo, R. Abnormality  
9 of water barrier function in psoriasis. Role of ceramide fractions. *Arch Dermatol*. 130(4):452-6  
10 (1994).  
11
- 12 5. Stalder, J.F., Tennstedt, D., Deleuran, M., Fabbrocini, G., de Lucas, R., Haftek, M., et  
13 al. Fragility of epidermis and its consequence in dermatology. *J Eur Acad Dermatol Venereol*.  
14 28 Suppl 4:1-18 (2014).  
15
- 16 6. Finlay, A.Y. and Coles, E.C. The effect of severe psoriasis on the quality of life of 369  
17 patients. *Br J Dermatol*. 132(2):236-44 (1995).  
18
- 19 7. Lasek, R.J. and Chren, M.M. Acne vulgaris and the quality of life of adult  
20 dermatology patients. *Arch Dermatol*. 134(4):454-8 (1998).  
21
- 22 8. O'Donnell, B.F., Lawlor, F., Simpson, J., Morgan, M. and Greaves, M.W. The impact  
23 of chronic urticaria on the quality of life. *Br J Dermatol*. 136(2):197-201 (1997).  
24
- 25 9. Wolkenstein, P., Loundou, A., Barrau, K., Auquier, P., Revuz, J. and Quality of Life  
26 Group of the French Society of, D. Quality of life impairment in hidradenitis suppurativa: a  
27 study of 61 cases. *J Am Acad Dermatol*. 56(4):621-3 (2007).  
28
- 29 10. Otranto, M., Nascimento, A.P. and Monte-Alto-Costa, A. Insulin resistance impairs  
30 cutaneous wound healing in mice. *Wound Repair Regen*. 21(3):464-72 (2013).  
31
- 32 11. Frank, S., Stallmeyer, B., Kampfer, H., Kolb, N. and Pfeilschifter, J. Leptin enhances  
33 wound re-epithelialization and constitutes a direct function of leptin in skin repair. *J Clin Invest*.  
34 106(4):501-9 (2000).  
35
- 36 12. Coon, D., Gusenoff, J.A., Kannan, N., El Khoudary, S.R., Naghshineh, N. and Rubin,  
37 J.P. Body mass and surgical complications in the postbariatric reconstructive patient: analysis of  
38 511 cases. *Ann Surg*. 249(3):397-401 (2009).  
39
- 40 13. VanGilder, C., MacFarlane, G., Meyer, S. and Lachenbruch, C. Body mass index,  
41 weight, and pressure ulcer prevalence: an analysis of the 2006-2007 International Pressure Ulcer  
42 Prevalence Surveys. *J Nurs Care Qual*. 24(2):127-35 (2009).  
43  
44  
45  
46  
47  
48  
49  
50  
51  
52  
53  
54  
55  
56  
57  
58  
59  
60

- 1  
2  
3  
4  
5  
6  
7  
8  
9  
10  
11  
12  
13  
14  
15  
16  
17  
18  
19  
20  
21  
22  
23  
24  
25  
26  
27  
28  
29  
30  
31  
32  
33  
34  
35  
36  
37  
38  
39  
40  
41  
42  
43  
44  
45  
46  
47  
48  
49  
50  
51  
52  
53  
54  
55  
56  
57  
58  
59  
60
14. Bremmer, S., Van Voorhees, A.S., Hsu, S., Korman, N.J., Lebwohl, M.G., Young, M., et al. Obesity and psoriasis: from the Medical Board of the National Psoriasis Foundation. *J Am Acad Dermatol.* 63(6):1058-69 (2010).
15. Minematsu, T., Huang, L., Ibuki, A., Nakagami, G., Akase, T., Sugama, J., et al. Altered expression of matrix metalloproteinases and their tissue inhibitors in matured rat adipocytes in vitro. *Biol Res Nurs.* 14(3):242-9 (2012).
16. Ibuki, A., Akase, T., Nagase, T., Minematsu, T., Nakagami, G., Horii, M., et al. Skin fragility in obese diabetic mice: possible involvement of elevated oxidative stress and upregulation of matrix metalloproteinases. *Exp Dermatol.* 21(3):178-83 (2012).
17. So, T., Ito, A., Sato, T., Mori, Y. and Hirakawa, S. Tumor necrosis factor-alpha stimulates the biosynthesis of matrix metalloproteinases and plasminogen activator in cultured human chorionic cells. *Biol Reprod.* 46(5):772-8 (1992).
18. Koyano, Y., Nakagami, G., Iizaka, S., Minematsu, T., Noguchi, H., Tamai, N., et al. Exploring the prevalence of skin tears and skin properties related to skin tears in elderly patients at a long-term medical facility in Japan. *Int Wound J.* (2014).
19. Horii, M., Sugama, J., Oe, M., Minematsu, T., Nagase, T., Yabunaka, K., et al. Ultrasonography reveals structural changes in the dermis and subcutaneous tissue of obese males: investigation of the association with oxidative stress. *Journal of Japanese Society of Wound, Ostomy and Continence Management.* 17(1):23-32 (2013).
20. Matsumoto, M., Ibuki, A., Minematsu, T., Sugama, J., Horii, M., Ogai, K., et al. Structural changes in dermal collagen and oxidative stress levels in the skin of Japanese overweight males. *Int J Cosmet Sci.* 36(5):477-84 (2014).
21. Mugita, Y., Minematsu, T., Huang, L., Sugama, J., Ichikawa, Y., Nakagami, G., et al. A convenient and highly sensitive method for quantification of ceramide in tape-stripping samples by dot-blot analysis as a skin barrier assessment technique in murine macerated skin. *Journal of Japanese Society of Wound, Ostomy and Continence Management.* 17(3):201-12 (2013).
22. Puissant, C., Abraham, P., Durand, S., Humeau-Heurtier, A., Faure, S., Leftheriotis, G., et al. Reproducibility of non-invasive assessment of skin endothelial function using laser



- 1  
2  
3  
4 Doppler flowmetry and laser speckle contrast imaging. *PLoS One*. 8(4):e61320 (2013).
- 5  
6 23. Bargo, P.R., Walston, S.T., Chu, M., Seo, I. and Kollias, N. Non-invasive assessment  
7 of tryptophan fluorescence and confocal microscopy provide information on skin barrier repair  
8 dynamics beyond TEWL. *Exp Dermatol*. 22(1):18-23 (2013).
- 9  
10  
11 24. Meerwaldt, R., Graaff, R., Oomen, P.H., Links, T.P., Jager, J.J., Alderson, N.L., et al.  
12 Simple non-invasive assessment of advanced glycation endproduct accumulation. *Diabetologia*.  
13 47(7):1324-30 (2004).
- 14  
15  
16 25. Angelova-Fischer, I., Mannheimer, A.C., Hinder, A., Ruether, A., Franke, A., Neubert,  
17 R.H., et al. Distinct barrier integrity phenotypes in filaggrin-related atopic eczema following  
18 sequential tape stripping and lipid profiling. *Exp Dermatol*. 20(4):351-6 (2011).
- 19  
20  
21 26. Minematsu, T., Horii, M., Oe, M., Sugama, J., Mugita, Y., Huang, L., et al. Skin  
22 blotting: a noninvasive technique for evaluating physiological skin status. *Adv Skin Wound Care*.  
23 27(6):272-9 (2014).
- 24  
25  
26 27. Kishi, C., Minematsu, T., Huang, L., Mugita, Y., Kitamura, A., Nakagami, G., et al.  
27 Hypoosmotic Shock-Induced Subclinical Inflammation of Skin in a Rat Model of Disrupted  
28 Skin Barrier Function. *Biol Res Nurs*. in press (2014).
- 29  
30  
31 28. de Jongh, C.M., Verberk, M.M., Spiekstra, S.W., Gibbs, S. and Kezic, S. Cytokines at  
32 different stratum corneum levels in normal and sodium lauryl sulphate-irritated skin. *Skin Res*  
33 *Technol*. 13(4):390-8 (2007).
- 34  
35  
36 29. Akiba, S., Shinkura, R., Miyamoto, K., Hillebrand, G., Yamaguchi, N. and Ichihashi,  
37 M. Influence of chronic UV exposure and lifestyle on facial skin photo-aging--results from a  
38 pilot study. *J Epidemiol*. 9(6 Suppl):S136-42 (1999).
- 39  
40  
41 30. Hillebrand, G.G., Miyamoto, K., Schnell, B., Ichihashi, M., Shinkura, R. and Akiba, S.  
42 Quantitative evaluation of skin condition in an epidemiological survey of females living in  
43 northern versus southern Japan. *J Dermatol Sci*. 27 Suppl 1:S42-52 (2001).
- 44  
45  
46 31. Perkins, M.A., Osterhues, M.A., Farage, M.A. and Robinson, M.K. A noninvasive  
47 method to assess skin irritation and compromised skin conditions using simple tape adsorption  
48 of molecular markers of inflammation. *Skin Res Technol*. 7(4):227-37 (2001).
- 49  
50  
51  
52  
53  
54  
55  
56  
57  
58  
59  
60

- 1  
2  
3  
4  
5  
6  
7  
8  
9  
10  
11  
12  
13  
14  
15  
16  
17  
18  
19  
20  
21  
22  
23  
24  
25  
26  
27  
28  
29  
30  
31  
32  
33  
34  
35  
36  
37  
38  
39  
40  
41  
42  
43  
44  
45  
46  
47  
48  
49  
50  
51  
52  
53  
54  
55  
56  
57  
58  
59  
60
32. Yonan, C.R., Duong, P.T. and Chang, F.N. High-efficiency staining of proteins on different blot membranes. *Anal Biochem.* 338(1):159-61 (2005).
33. Omori-Miyake, M., Yamashita, M., Tsunemi, Y., Kawashima, M. and Yagi, J. In vitro assessment of IL-4- or IL-13-mediated changes in the structural components of keratinocytes in mice and humans. *J Invest Dermatol.* 134(5):1342-50 (2014).
34. Hotamisligil, G.S., Arner, P., Caro, J.F., Atkinson, R.L. and Spiegelman, B.M. Increased adipose tissue expression of tumor necrosis factor-alpha in human obesity and insulin resistance. *J Clin Invest.* 95(5):2409-15 (1995).
35. Pence, B.D. and Woods, J.A. Exercise, Obesity, and Cutaneous Wound Healing: Evidence from Rodent and Human Studies. *Adv Wound Care (New Rochelle).* 3(1):71-9 (2014).
36. Pierpont, Y.N., Dinh, T.P., Salas, R.E., Johnson, E.L., Wright, T.G., Robson, M.C., et al. Obesity and surgical wound healing: a current review. *ISRN Obes.* 2014:638936 (2014).
37. Holmes, R.F., Davidson, M.W., Thompson, B.J. and Kelechi, T.J. Skin tears: care and management of the older adult at home. *Home Healthc Nurse.* 31(2):90-101 (2013).
38. Stojadinovic, O., Minkiewicz, J., Sawaya, A., Bourne, J.W., Torzilli, P., de Rivero Vaccari, J.P., et al. Deep tissue injury in development of pressure ulcers: a decrease of inflammasome activation and changes in human skin morphology in response to aging and mechanical load. *PLoS One.* 8(8):e69223 (2013).
39. Burnette, W.N. "Western blotting": electrophoretic transfer of proteins from sodium dodecyl sulfate--polyacrylamide gels to unmodified nitrocellulose and radiographic detection with antibody and radioiodinated protein A. *Anal Biochem.* 112(2):195-203 (1981).
40. Nakamura, K., Tanaka, T., Kuwahara, A. and Takeo, K. Microassay for proteins on nitrocellulose filter using protein dye-staining procedure. *Anal Biochem.* 148(2):311-9 (1985).
41. Moeremans, M., Daneels, G. and De Mey, J. Sensitive colloidal metal (gold or silver) staining of protein blots on nitrocellulose membranes. *Anal Biochem.* 145(2):315-21 (1985).
42. Berggren, K., Steinberg, T.H., Lauber, W.M., Carroll, J.A., Lopez, M.F., Chernokalskaya, E., et al. A luminescent ruthenium complex for ultrasensitive detection of proteins immobilized on membrane supports. *Anal Biochem.* 276(2):129-43 (1999).

- 1  
2  
3  
4  
5  
6  
7  
8  
9  
10  
11  
12  
13  
14  
15  
16  
17  
18  
19  
20  
21  
22  
23  
24  
25  
26  
27  
28  
29  
30  
31  
32  
33  
34  
35  
36  
37  
38  
39  
40  
41  
42  
43  
44  
45  
46  
47  
48  
49  
50  
51  
52  
53  
54  
55  
56  
57  
58  
59  
60
43. Tzanavari, T., Giannogonas, P. and Karalis, K.P. TNF-alpha and obesity. *Curr Dir Autoimmun.* 11:145-56 (2010).
44. Prasai, M.J., Mughal, R.S., Wheatcroft, S.B., Kearney, M.T., Grant, P.J. and Scott, E.M. Diurnal variation in vascular and metabolic function in diet-induced obesity: divergence of insulin resistance and loss of clock rhythm. *Diabetes.* 62(6):1981-9 (2013).
45. Akase, T., Nagase, T., Huang, L., Ibuki, A., Minematsu, T., Nakagami, G., et al. Aging-like skin changes induced by ultraviolet irradiation in an animal model of metabolic syndrome. *Biol Res Nurs.* 14(2):180-7 (2012).

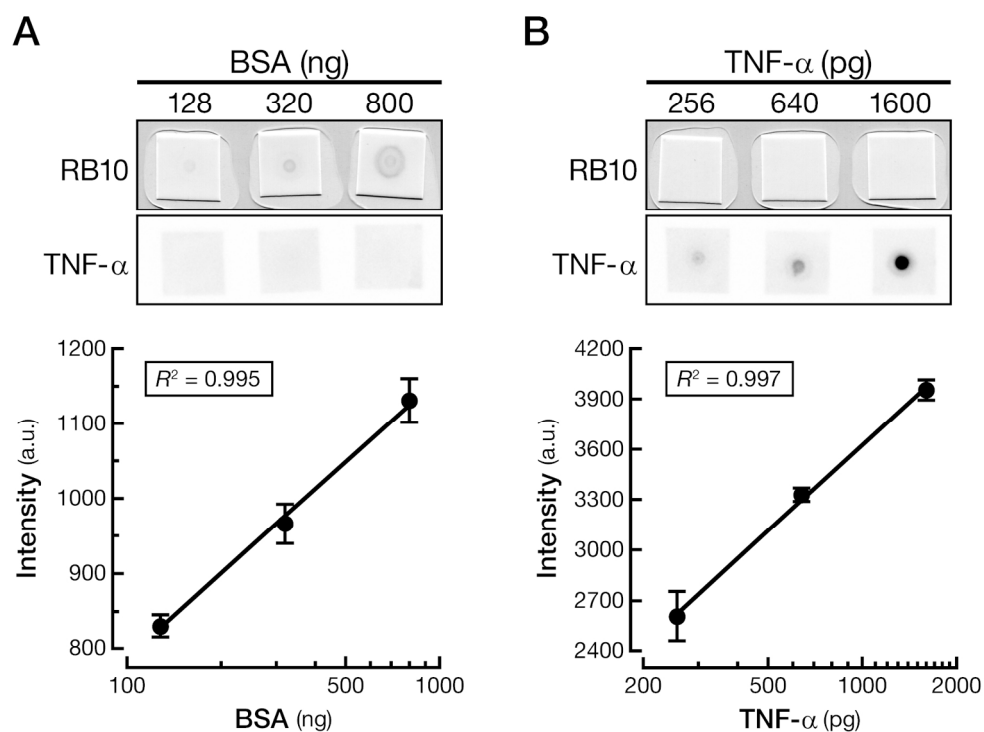
### Figure legends

Figure 1. Calibration curves for total protein and TNF- $\alpha$ . (A) A calibration curve of BSA for total protein and (B) for TNF- $\alpha$ . The experiment was repeated three times and the average was used for calculations. The data are shown as means  $\pm$  the standard error of the mean (SEM). The unit a.u. stands for arbitrary unit.

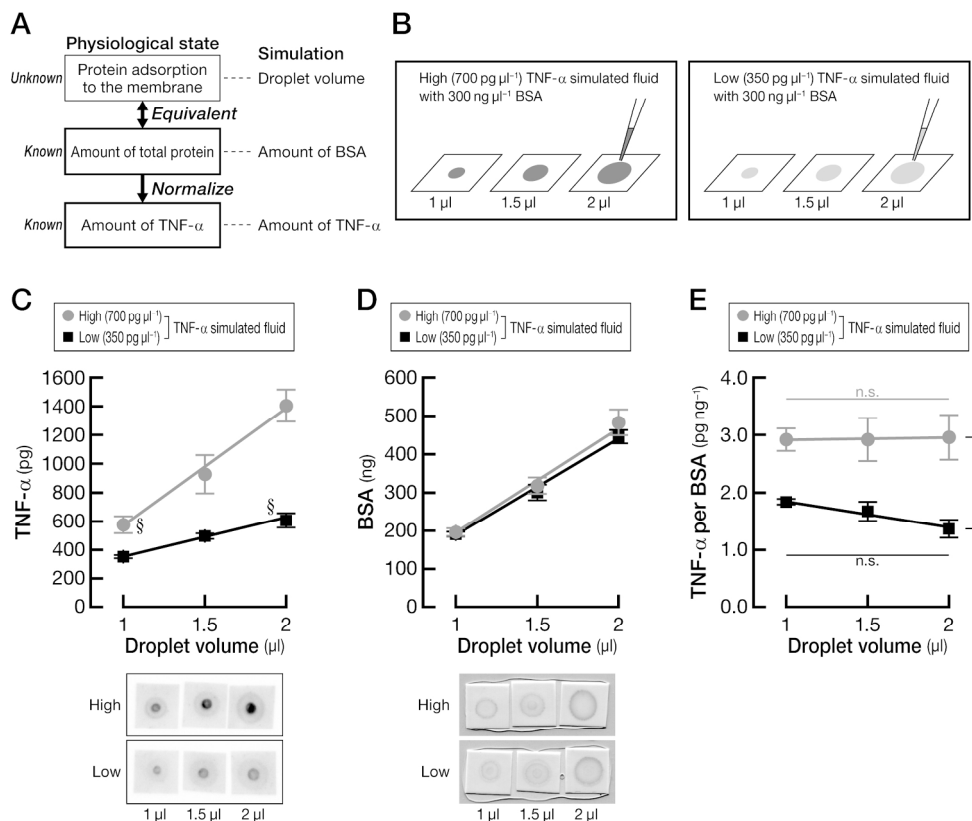
Figure 2. Simulation experiment of total protein normalization. (A) Principle of the simulation experiment. In this simulation, difference in the TNF- $\alpha$  concentration reflects the physiological TNF- $\alpha$  amount on the skin, and the droplet volume reflects the difference in protein adsorption to the membrane, which can be estimated by the amount of BSA (i.e., total protein). (B) Experimental paradigm. In this experiment, different (1, 1.5, or 2  $\mu$ l) volumes of the same concentration of BSA (300 ng  $\mu$ l<sup>-1</sup>) with different concentrations of a TNF- $\alpha$  [700 (high) or 350 (low) pg  $\mu$ l<sup>-1</sup>] mixture were applied to separate membranes and analyzed according to the calibration curves. (C) As expected, the detected amount of TNF- $\alpha$  was proportional to the droplet volume, although the concentration of TNF- $\alpha$  was the same. Note that the different concentrations of TNF- $\alpha$  were falsely detected as the same amounts due to the droplet volume (denoted by  $\xi$ ). (D) The amount of BSA (total protein) showed similar results, corresponding to the applied volume of the mixture. (E) As a result of total protein normalization, high and low concentrations of TNF- $\alpha$  could be distinguished regardless of the applied volume (repeated

1  
2  
3  
4 three times;  $*p < 0.0001$ ). n.s.: not significant. The experiment was repeated three times and the  
5  
6 average was used for calculations. The data are shown as means  $\pm$  SEM.  
7  
8  
9

10 Figure 3. Total protein normalization of skin blotting on human subjects. (A) Variation of total  
11 protein amounts on the membrane. In boxplot, each border in the box shows the 25, 50, and 75  
12 percentile from the bottom, with a min–max whisker. (B, C) Examples of total protein staining  
13 (B) and TNF- $\alpha$  immunoblotting (C). The same number indicates the same membrane. (D, E)  
14 Plots of TNF- $\alpha$  amount without (D) or with (E) normalization in healthy (BMI  $< 25$ ;  $n = 13$ ) and  
15 obese (BMI  $> 30$ ;  $n = 5$ ) males. In (E) the data are shown as means  $\pm$  standard deviation. Note  
16 that the significant difference in the level of TNF- $\alpha$  between healthy and obese people was  
17 observed only when the normalization was applied [D,  $p = 0.69$  (Mann–Whitney  $U$  test; n.s.: not  
18 significant) without normalization; E,  $p = 0.006$  (Student's  $t$ -test) after normalization].  
19  
20  
21  
22  
23  
24  
25  
26  
27  
28  
29  
30  
31  
32  
33  
34  
35  
36  
37  
38  
39  
40  
41  
42  
43  
44  
45  
46  
47  
48  
49  
50  
51  
52  
53  
54  
55  
56  
57  
58  
59  
60

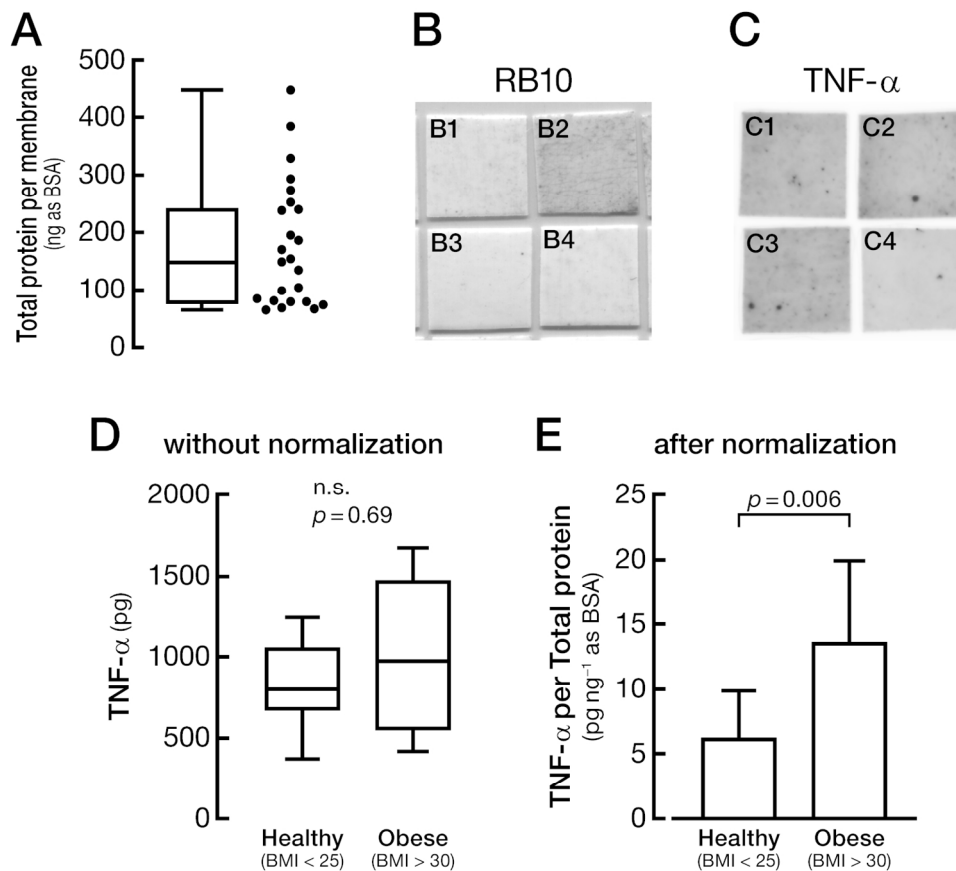


32 Calibration curves for total protein and TNF- $\alpha$ . (A) A calibration curve of BSA for total protein and (B) for  
33 TNF- $\alpha$ . The experiment was repeated three times and the average was used for calculations. The data are  
34 shown as means  $\pm$  the standard error of the mean (SEM). The unit a.u. stands for arbitrary unit.  
35 157x116mm (300 x 300 DPI)



Simulation experiment of total protein normalization. (A) Principle of the simulation experiment. In this simulation, difference in the TNF- $\alpha$  concentration reflects the physiological TNF- $\alpha$  amount on the skin, and the droplet volume reflects the difference in protein adsorption to the membrane, which can be estimated by the amount of BSA (i.e., total protein). (B) Experimental paradigm. In this experiment, different (1, 1.5, or 2  $\mu\text{l}$ ) volumes of the same concentration of BSA (300 ng  $\mu\text{l}^{-1}$ ) with different concentrations of a TNF- $\alpha$  [700 (high) or 350 (low) pg  $\mu\text{l}^{-1}$ ] mixture were applied to separate membranes and analyzed according to the calibration curves. (C) As expected, the detected amount of TNF- $\alpha$  was proportional to the droplet volume, although the concentration of TNF- $\alpha$  was the same. Note that the different concentrations of TNF- $\alpha$  were falsely detected as the same amounts due to the droplet volume (denoted by §). (D) The amount of BSA (total protein) showed similar results, corresponding to the applied volume of the mixture. (E) As a result of total protein normalization, high and low concentrations of TNF- $\alpha$  could be distinguished regardless of the applied volume (repeated three times; \* $p < 0.0001$ ). n.s.: not significant. The experiment was repeated three times and the average was used for calculations. The data are shown as means  $\pm$  SEM.

185x153mm (300 x 300 DPI)



Total protein normalization of skin blotting on human subjects. (A) Variation of total protein amounts on the membrane. In boxplot, each border in the box shows the 25, 50, and 75 percentile from the bottom, with a min-max whisker. (B, C) Examples of total protein staining (B) and TNF- $\alpha$  immunoblotting (C). The same number indicates the same membrane. (D, E) Plots of TNF- $\alpha$  amount without (D) or with (E) normalization in healthy (BMI < 25;  $n = 13$ ) and obese (BMI > 30;  $n = 5$ ) males. In (E) the data are shown as means  $\pm$  standard deviation. Note that the significant difference in the level of TNF- $\alpha$  between healthy and obese people was observed only when the normalization was applied [D,  $p = 0.69$  (Mann-Whitney  $U$  test; n.s.: not significant) without normalization; E,  $p = 0.006$  (Student's  $t$ -test) after normalization].

137x120mm (300 x 300 DPI)