

Therapies for castration-resistant prostate cancer in a new era: The indication of vintage hormonal therapy, chemotherapy and the new medicines

著者	Mizokami Atsushi, Kadono Yoshifumi, Kitagawa Yasuhide, Izumi Kouji, Konaka Hiroyuki
journal or publication title	International Journal of Urology
volume	24
number	8
page range	566-572
year	2017-08-01
URL	http://hdl.handle.net/2297/48428

doi: 10.1111/iju.13372



Therapies for CRPC on new era: The indication of vintage hormonal therapy, chemotherapy, and the new medicines

Journal:	<i>International Journal of Urology</i>
Manuscript ID	IJU-01275-2016.R2
Manuscript Type:	Review Article
Date Submitted by the Author:	n/a
Complete List of Authors:	MIZOKAMI, Atsushi; Kanzawa University, Urology Kadono, Yoshifumi; Kanazawa university, Urology Kitagawa, Yasuhide; Kanazawa University, Urology Izumi, Kouji; Kanazawa University, Urology KONAKA, Hiroyuki; kanazawa University University Graduate School of Medical Science, department of Integrative Cancer Therapy and Urology;
Key Words:	CRPC, New hormonal therapy, radium-223, vintage hormonal therapy, chemotherapy
Abstract:	<p>When advanced prostate cancer recurred during hormonal therapy and became the castration-resistant prostate cancer (CRPC), "vintage hormonal therapy" such as antiandrogen alternating therapy or estrogen-related hormonal therapy was widely conducted in Japan until 2013. This vintage hormonal therapy controlled the progression of CRPC. When CRPC relapses during these therapies, chemotherapy using docetaxel has been conducted subsequently. Since new hormonal therapies using abiraterone acetate and enzalutamide which improve the prognosis of CRPC have been available in Japan from 2014, therapeutic options for CRPC increased. Moreover, the improvement of the further prognosis is promising by using cabazitaxel for docetaxel-resistant CRPC and radium-223 for CRPC with bone metastasis. Increase in therapeutic options gives rise to many questions including best timing to use them and the indication. Furthermore, physicians have to consider the treatment for the recurrence after having conducted chemotherapy. We want to argue the difference in hormonal therapy between Japan and western countries and problems when conducting new treatments, and importance of image in this review article.</p>

Therapies for CRPC on new era: The indication of vintage hormonal therapy, chemotherapy, and the new medicines

Atsushi Mizokami, Yoshifumi Kadono, Yasuhide Kitagawa, Kouji Izumi, Hiroyuki Konaka

Department of Integrative Cancer Therapy and Urology

Kanazawa University, Graduate School of Medical Science

Abstract

When advanced prostate cancer recurred during hormonal therapy and became the castration-resistant prostate cancer (CRPC), “vintage hormonal therapy” such as antiandrogen alternating therapy or estrogen-related hormonal therapy was widely conducted in Japan until 2013. This vintage hormonal therapy controlled the progression of CRPC.

When CRPC relapses during these therapies, chemotherapy using docetaxel has been conducted subsequently. Since new hormonal therapies using abiraterone acetate and enzalutamide which improve the prognosis of CRPC have been available in Japan from 2014, therapeutic options for CRPC increased. Moreover, the improvement of the further prognosis

is promising by using cabazitaxel for docetaxel-resistant CRPC and radium-223 for CRPC with bone metastasis. Increase in therapeutic options gives rise to many questions including best timing to use them and the indication. Furthermore, physicians have to consider the treatment for the recurrence after having conducted chemotherapy. We want to argue the difference in hormonal therapy between Japan and western countries and problems when conducting new treatments, and importance of image in this review article.

Corresponding author:

Atsushi Mizokami

Department of Integrative Cancer Therapy and Urology

Kanazawa University, Graduate School of Medical Science

13-1 Takaramachi, Kanazawa, 920-8640, Japan

Tel: +81-76-265-2393

e-mail address: mizokami@staff.kanazawa-u.ac.jp

Introduction

The initial treatment for advanced prostate cancer is mainly hormonal therapy. However, the treatment strategy is different between Japan and in western countries. Many physicians in western countries do not recommend combined androgen blockade (CAB) i.e., the combined use of castration and an antiandrogen ¹. Although addition of antiandrogen to castration for advanced prostate cancer may produce improvement of about 2% or 3% in overall survival, it does not produce great benefit for patients ². This may be one of the reasons why they prefer castration only. In contrast, advanced prostate cancer is treated with CAB at many institutions in Japan. At least until the first half of 2014, various forms of hormonal therapy (so-called vintage hormonal therapy) have been performed on cases of prostate cancer that have advanced to castration-resistant prostate cancer (CRPC) ³⁻⁵. Dexamethasone also has favorable effects on CRPC ⁶. Chemotherapy using docetaxel has become available for recurrence after these vintage hormonal therapies in Japan since 2008 ⁷. And best supportive care (BSC) has been chosen once efficacy of docetaxel is lost.

Since 2014, novel drugs for hormonal therapy (enzalutamide and abiraterone) and chemotherapy (cabazitaxel) have been added to the coverage of the national health insurance

system in Japan, and therapeutic approaches to CRPC have changed. Radium-223, a therapeutic agent for bone metastases of CRPC, has also been made available for clinical use in 2016.

It is sometime difficult to choose vintage hormonal therapy and new drugs for CRPC. We argue the difference in management of hormonal therapies between Japan and in western countries and how to use new drugs in this review article.

Vintage hormonal therapy

The usefulness of CAB for advanced prostate cancer has been demonstrated for stage C and D1 cases in a prospective clinical study conducted in Japan, except D2 case⁸. In reality, however, there are many institutions in Japan that use CAB. CAB has been proven useful also for stage D2 cases through an analysis using the J-CaP database, although it was a retrospective study⁹. A possible reason why CAB is not very useful in western countries is that a lower bicalutamide dose of 50 mg/day is used in western countries, while the dose in Japan is 80 mg/day. It was clear that the higher dose of bicalutamide (100 mg/day or 150 mg/day) was more effective¹⁰. Therefore, it is potentially insufficient for 50 mg/day bicalutamide to exert the adequate antiandrogen effect. For CRPC occurring after CAB, it

was common in Japan to confirm the antiandrogen withdrawal effect¹¹ or perform alternative antiandrogen therapy³. In particular, it has been shown that alternative antiandrogen therapy decreased prostate specific antigen (PSA) in 60–80% of patients, and that decreased PSA was associated with good prognosis^{3, 12}. After these reports on the usefulness of alternative antiandrogen therapy, this therapy has been commonly used in Japan. In addition, estrogen-related drugs, such as estramustine phosphate and ethinyl-estradiol, have also been used for post recurrence of alternative antiandrogen therapy. In particular, the usefulness of ethinyl-estradiol has been assessed in retrospective studies, and favorable results have been obtained, demonstrating PSA progression free survival (PFS) of 10 months in CRPC patients in Japan and PFS of 15.1 months in metastatic CRPC in western countries^{4, 13}. Administration of low-dose estramustine phosphate for CRPC showed favorable response before docetaxel treatment (7.1-month median PFS, and 42-month overall survival in 31 patients with CRPC)⁵. Also for dexamethasone, which has been used extensively for CRPC in Japan because of benefit in treatment of CRPC¹⁴, the usefulness has been reconfirmed by a prospective study in western countries comparing dexamethasone and prednisone for treatment of CRPC, in which PFS periods were 9.7 months and 5.1 months, respectively¹⁵.

In western countries, prospective clinical studies of hormonal therapy combined with

docetaxel from the initial treatment for advanced prostate cancer (CHAARTED study & STAMPEDE study), compared to 44 months and 45 months in hormonal therapy alone groups, overall survival rates in docetaxel-hormonal therapy combination groups were 57.6 months and 60 months, respectively ^{16,17}. Meanwhile, a retrospective study using the large J-CaP database (N = 5618) has reported overall survival rates of 80.4 months, 67.2 months, and 45.6 months for stages M1a (N = 224), M1b (N = 4386), and M1c (N = 278), respectively, while showing good survival even without docetaxel in the initial treatment ⁹. Although there may also be racial differences in responsiveness to hormonal therapy ¹⁸, good survival rates in Japan may be attributable in part to traditional treatments (vintage hormonal therapy) for CRPC including alternative antiandrogen therapy.

New hormonal therapy

Enzalutamide, a second-generation antiandrogen, and abiraterone acetate, an adrenal androgen synthesis inhibitor, were added to the coverage of the national health insurance system in Japan in 2014, and have been available for unrestricted clinical use for treatment of CRPC. These two drugs have been demonstrated to be useful for treatment of CRPC, whether or not docetaxel is used, in clinical studies conducted in Japan and in western countries ¹⁹⁻²⁵.

This paper briefly reviews the pathogenesis of CRPC and the mechanism of action of these two drugs against CRPC²⁶. Prostate cancer becomes CRPC mainly via two mechanisms. One is adaptation, in which prostate cancer cells gradually adapt to a post-castration low-androgen environment through reactivation of androgen receptor (AR) (hypersensitive AR). The other is clonal selection, in which androgen-independent prostate cancer (AIPC) cells, which exist more or less originally, increase after castration. Prognosis of CRPC is considered to differ depending on which of the two mechanisms has played a major role in CRPC development. In the case of Japan, given the aforementioned fact that certain therapeutic effects are produced by switching among antiandrogen agents³, CRPC presumably develops mainly through adaptation according to the result of alternative antiandrogen therapy³. More specifically, in a majority of prostate cancer cases that have advanced to CRPC, testosterone and DHT are considered to be synthesized from androgen of adrenal origin in a microenvironment in prostate cancer tissues and stimulate reactivated hypersensitive AR²⁷.

If hypersensitive AR can be inhibited more strongly, CRPC caused via adaptation is likely to be more effectively treatable. This is realized by the advent of the two new drugs for hormonal therapy. Enzalutamide shows about 8-times higher AR affinity than the

first-generation antiandrogen bicalutamide²⁸. Furthermore, enzalutamide inhibits nuclear translocation of AR and also inhibits AR from binding to DNA by preventing the cofactor from binding to AR²⁸. Abiraterone, on the other hand, inhibits androgen (DHEA) synthesis in the testis, adrenal gland, and prostate cancer tissues, decreases intracellular androgen levels, and inhibits AR activation. It is easy to understand if it is put this way; enzalutamide inhibits the downstream of AR more strongly, whereas abiraterone potently inhibits the upstream of AR. Nevertheless, enzalutamide and abiraterone may be equally effective in the sense that they basically inhibit the AR axis signaling pathway more strongly than conventional antiandrogens.

Indication of new hormonal therapies

In view of the pathogenesis of CRPC and the mechanism of action of the novel hormonal therapy drugs, it may be effective to start using these drugs as soon as the disease becomes CRPC. However, about 60% of patients are expected to enjoy improvements in prognosis by reducing PSA with vintage hormonal therapy as the initial treatment against CRPC such as alternative antiandrogen therapy³. In addition, when patient background was compared between in western countries and Japanese clinical studies using post-docetaxel abiraterone

and enzalutamide, vintage hormonal therapy was noticeably more commonly used among patients enrolled in studies in Japan (Fig. 1)²⁹. The results from studies conducted in Japan showed the effectiveness of these drugs, although the efficacy of new hormone therapy agents was somewhat lower than that in western countries studies^{23,24}. Western countries study has also suggested that the efficacy of abiraterone does not change appreciably depending on whether diethylstilboestrol (DES) is used³⁰. Thus, if new drugs can be expected to be effective even after treatment with vintage hormonal therapy, is it necessary to use new drugs in a hurry? Rather, the final prognosis after CRPC may be improved by using new drugs after using vintage hormonal therapy. Conversely, if response and survival benefit can be expected from the use of vintage hormonal therapy, such as alternative antiandrogen therapy, after using potent new hormone therapy drugs, it may be also valid; however, unfortunately, this remains to be tested in clinical studies. It would be acceptable to use vintage hormonal therapy for 1 to 3 months and then decide whether to continue it or switch to some other treatment based on the change of PSA, and radiographic change, and symptom.

Moreover, there are some points to be aware of if new hormonal therapy drugs are to be used early in CRPC. It is a problem of drug resistance occurring due to long-term use. One of mechanisms for abiraterone/enzalutamide resistance is expression of an AR splicing variant

(AR-V7)^{31 32}. Studies in cultured cell systems have shown induction of AR-V7 expression due to increased RNA editing factors (U1A, U2A) after complete removal of androgen or addition of enzalutamide³³, suggesting the possibility that long-term strong inhibition of AR activation leads to increased expression of AR-V7 and affects prognosis. Enzalutamide/abiraterone converted AR-V7 positive in patients whose AR-V7 was initially undetectable³⁴. Moreover, nuclear AR-V7 expression increased after enzalutamide/abiraterone in CRPC biopsy samples³⁵. Among metastatic CRPC patients who received abiraterone or enzalutamide, OS and PSA-PFS in those positive for AR-V7 expression after the treatment have been reported to be significantly lower than in those with no expression³⁴. If these drugs are to be started at an early stage of CRPC, physicians should be aware of the possibility of AR-V7 induction, although emergence of AR-V7 may be involved in other mechanisms.

Chemotherapy

Since the effectiveness of docetaxel against CRPC has been demonstrated^{36, 37}, docetaxel has become available for medical care under the national insurance system in Japan since 2008⁷. While the maximum use of docetaxel is limited to 10 courses in western

countries, there are no restrictions on this respect in Japan and more than 10 courses of docetaxel can be used for some patients³⁸. This may contribute to prolong prognosis for Japanese patients. However, long-term use of docetaxel in the standard regimen is not possible for many patients due to adverse effects, and biweekly administration of docetaxel has been reported to be effective and safe³⁹. With this method, quality of life (QOL) during treatment with docetaxel is expected to be improved without losing the effectiveness of docetaxel.

However, treatment becomes difficult once docetaxel resistance develops. One of mechanisms for resistance to docetaxel is increased expression of P-glycoprotein from multiple drug resistant gene 1 (MDR1)⁴⁰. P-glycoprotein is a cell membrane protein and has a function of extracellularly releasing docetaxel that has entered cells. Cabazitaxel is an anticancer agent effective against docetaxel-resistant prostate cancer⁴¹. Since cabazitaxel has low affinity to P-glycoprotein, it is not captured by P-glycoprotein even when its expression is enhanced by docetaxel, and thus is not easily released outside of cancer cells. The effectiveness of cabazitaxel against docetaxel-resistant prostate cancer has also been demonstrated in Japan. Since cabazitaxel has low affinity to P-glycoprotein, which is considered responsible for blood brain barrier, cabazitaxel is expected to be effective against

brain metastases^{42, 43}. However, it remains controversial as to when is the best to switch docetaxel to cabazitaxel. In other words, it is difficult to judge how long to continue docetaxel and when to switch to cabazitaxel while docetaxel is still effective.

Recently reported results from CHAARTED and STAMPEDE trials have shown that overall survival was improved by using six courses of docetaxel from the initial androgen-deprivation therapy in prostate cancer patients with metastases^{16, 17}. This hormonal chemotherapy from the initial treatment is now being established as a standard treatment in western countries. Yet this treatment cannot be performed currently in Japan because of insurance restrictions. This treatment may become available for patients in Japan someday, but then the patient selection would be a problem. I have formulated a hypothesis about why this treatment is effective for advanced prostate cancer²⁹. This hormonal chemotherapy is thought to be useful for patients with high-level AIPC before treatment with low-AR expression. AIPC is speculated to be more in patients with a very high grade of malignancy^{44, 45}. AR immunostaining with a pattern oriented approach for response was capable of accurately predicting response to hormone therapy in patients with advanced stage disease⁴⁶. Hormonal chemotherapy may be effective, if it is performed selectively on such patients with low-AR expression.

Seesaw theory

Relapses after new hormonal therapy are treated with docetaxel or cabazitaxel, but for relapses after that, physicians would often perform BSC. However, new hormonal therapy rechallenge after chemotherapy can sometimes reduce PSA again and improve the situation. Onishi et al. described that ethinylestradiol rechallenge for CRPC lead to a prolonged disease control in selected patient ⁴⁷. Abiraterone acetate rechallenge also decreased PSA in heavily pre-treated CRPC patients ⁴⁸. We also observed the cases whose PSA was decreased by enzalutamide and abiraterone acetate after heavily pre-treatments including chemotherapy (Fig. 2). Although rechallenge is not applicable to all CRPC patients, hormonal therapy may be attempted before starting BSC. Similar phenomenon was observed in a patient who had metastatic anaplastic lymphoma kinase (*ALK*)-rearranged lung cancer, resistance to crizotinib developed because of a mutation in the *ALK* kinase domain ⁴⁹. They showed that clonal progression was related with resensitization to crizotinib against lorlatinib *ALK* Resistance Mutation L1198F ⁴⁹. I formulated the following hypothesis as to why rechallenge is effective for CRPC after some hormonal therapies and chemotherapy (Fig. 3). CRPC is in a situation where two clonal cell populations, hormone-hypersensitive prostate

cancer (HHSPC) and AIPC, are mixed. New hormonal therapy, of course, is only effective for HHSPC cells. Docetaxel may inhibit the proliferation of HHSPC in some degree. In contrast, COU-AA-301 trial and AFFIRM trial revealed HHSPC can survive after docetaxel treatment because abiraterone and enzalutamide were still effective after docetaxel^{50,51}. In other words, the effect of docetaxel is restrictive for HHSPC. On the other hands, new hormonal therapy decreases the number of HHSPC cells, but may be ineffective for AIPC. When chemotherapy is then performed, the number of AIPC cells decreases, but surviving HHSPC and stem cell-derived HSPC may increase again^{52,53}. If new hormonal therapy is performed thereafter again, HHSPC cells decrease and AIPC cells increase again. Eventually, AIPC cells become resistant to all treatments finally, and kill the patient. Alternating hormonal therapy and chemotherapy in this way causes changes in the ratio of HHSPC and AIPC cells, an effect that seems like seesaw (Seesaw theory). In addition, it is thought that prostatic cancer progresses further through interactions between HSPC and AIPC (our unpublished data). The above-mentioned CHAARTED and STAMPEDE trials may be effective presumably because HSPC and AIPC are simultaneously attacked by hormone chemotherapy and thus this seesaw does not move.

Border attack by Ra-223

Japanese health insurance started to cover the treatment of Radium-223 (Ra-223) for CRPC with bone metastasis in 2016. According to ALSYMPCA trial using Ra-223, Ra-223, as compared with placebo, significantly improved overall survival (median, 14.0 months vs. 11.2 months)⁵⁴. Moreover, time to first symptomatic skeletal event (SSE) was longer with Ra-223 than with placebo (median 15.6 months vs 9.8 months)⁵⁵. However, in Phase II study using Ra-223, a lot of cases that PSA was elevated were observed although Alp was decreased⁵⁶. Even in Phase II study in Japan using Ra-223, the mean change rate of PSA by Ra-223 was rather increased to 97.3% and 230.5% although the mean change rate of Alp was -19.3% and -1.9% on 12 weeks after first treatment and 4 weeks after final treatment, respectively. We experienced the case that PSA continued being elevated although bone-derived Alp (BAP) and Bone Scan Index (BSI) on bone scintigraphy were improved by Ra-223^{57,58}. It remains unclear why such discrepancy occurs by Ra-223. A feature of Ra-223 is to release alpha particle of which flying length is very short⁵⁹. This is the reason why incidence of myelosuppression caused by Ra-223 is low compared with Sr-89. However, a short flying length of alpha particle was considered with a problem. Previously we studied the repression of osteoplastic bone metastases of the prostate cancer by bisphosphonate in

vivo ⁶⁰. We noticed that a lot of prostate cancer cells still remained in bone marrow although bisphosphonate existing in the bone matrix could prevent cancer cells from infiltrating into a bone matrix at that time (Fig. 2 in reference Miwa et al. ⁶⁰). From this observation, we hypothesized that Ra-223 as well as bisphosphonate cannot destroy cancer cells existing in the remote area from a bone matrix distantly although alpha particles from Ra-223 kill cancer cells near the bone matrix. However, since prostate cancer cells living in the remote area from the bone matrix continues still secreting PSA, PSA may be elevated. This speculation may explain the discrepancy between PSA and BSI/Alp (Border attack by Ra-223). Post hoc analysis of ALSYMPCA trial showed that median overall survival was also longer in patients who received Ra-223 plus abiraterone, enzalutamide, or both than in those who did not receive these agents ⁶¹. Moreover, according to the result of ALSYMPCA trial, it is considered that it was the most effective to use Ra-223 for the patients with moderate bone metastases (Extent of disease score: 2 to 3 or 2-7% of BSI). When physicians use Ra-223 for bone metastasis, it will be necessary to evaluate the degree of bone metastasis exactly and consider concomitant drugs.

Evaluation of Image

A decline and an elevation of serum PSA value are the effective biomarker when physicians judge the regression and the recurrence of prostate cancer. However, they sometimes experience that a symptom of patients worsens and the results of the image are poor even if an absolute value of the PSA is low. Moreover, PSA value may not become the prognostic marker ^{62 63}. Since advanced prostate cancer often metastasize to bone, it is extremely important to evaluate the change of bone metastasis. The extent of disease (EOD) on bone scintigraphy was used to stratify the level of bone metastasis ⁶⁴. However, it was difficult to monitor EOD quantitatively. Therefore, the Prostate Cancer Clinical Trials Working Group 3 (PCWG3) recommends to use bone scintigraphy only for progression of bone metastasis ⁶⁵. Recently, a computer-aided diagnosis system (CAD) on bone scintigraphy has been developed for improving the interpretations of bone scan images. CAD shows Bone Scan Index (BSI) which provides a quantitative measure of the percentage of the adult skeleton involved by bone metastases ^{57, 66}. BSI on bone scintigraphy was a predictor of overall survival ⁶⁷⁻⁶⁹. Measurement of BSI revealed that PSA is not always correlated with the level of bone metastasis ²⁹. PCWG3 also recommends computed tomography (CT) to evaluate lymph node metastases and visceral metastases ⁶⁵. It is extremely important to evaluate not only the PSA value but also various images regularly and to treat for CRPC.

Conclusion

When physicians choose the therapy for patients with CRPC, it is extremely important to judge comprehensively in consideration of (1) the effectiveness of therapeutic drugs based on evidence in Japan, (2) the PSA nadir level and the situation of the progress after CRPC, (3) treatment responsiveness for vintage and new hormonal therapy, (4) the evaluation with the image, (5) the adverse event by the treatment.

Conflicts of Interest: All authors have no competing interest.

References

- 1 Gillessen S, Omlin A, Attard G et al. Management of patients with advanced prostate cancer: recommendations of the St Gallen Advanced Prostate Cancer Consensus Conference (APCCC) 2015. *Ann Oncol.* 2015; **26**: 1589-604.
- 2 Maximum androgen blockade in advanced prostate cancer: an overview of the randomised trials. Prostate Cancer Trialists' Collaborative Group. *Lancet.* 2000; **355**: 1491-8.
- 3 Suzuki H, Okihara K, Miyake H et al. Alternative nonsteroidal antiandrogen therapy for advanced prostate cancer that relapsed after initial maximum androgen blockade. *The Journal of urology.* 2008; **180**: 921-7.
- 4 Izumi K, Kadono Y, Shima T et al. Ethinylestradiol improves prostate-specific antigen levels in pretreated castration-resistant prostate cancer patients. *Anticancer Res.* 2010; **30**: 5201-5.
- 5 Inoue T, Ogura K, Kawakita M et al. Effective and Safe Administration of Low-Dose Estramustine Phosphate for Castration-Resistant Prostate Cancer. *Clinical genitourinary cancer.* 2016; **14**: e9-e17.
- 6 Akakura K, Suzuki H, Ueda T et al. Possible mechanism of dexamethasone therapy for prostate cancer: suppression of circulating level of interleukin-6. *Prostate.* 2003; **56**: 106-9.
- 7 Naito S, Tsukamoto T, Koga H et al. Docetaxel plus prednisolone for the treatment of metastatic hormone-refractory prostate cancer: a multicenter Phase II trial in Japan. *Jpn J Clin Oncol.* 2008; **38**: 365-72.
- 8 Akaza H, Hinotsu S, Usami M et al. Combined androgen blockade with bicalutamide for advanced prostate cancer: long-term follow-up of a phase 3, double-blind, randomized study for survival. *Cancer.* 2009; **115**: 3437-45.
- 9 Kadono Y, Nohara T, Ueno S et al. Validation of TNM classification for metastatic prostatic cancer treated using primary androgen deprivation therapy. *World journal of urology.* 2016; **34**: 261-7.
- 10 Kaisary AV. Current clinical studies with a new nonsteroidal antiandrogen, Casodex. *The Prostate Supplement.* 1994; **5**: 27-33.
- 11 Sartor AO, Tangen CM, Hussain MH et al. Antiandrogen withdrawal in

castrate-refractory prostate cancer: a Southwest Oncology Group trial (SWOG 9426). *Cancer*. 2008; **112**: 2393-400.

12 Narimoto K, Mizokami A, Izumi K et al. Adrenal androgen levels as predictors of outcome in castration-resistant prostate cancer patients treated with combined androgen blockade using flutamide as a second-line anti-androgen. *Int J Urol*. 2010; **17**: 337-45.

13 Sciarra A, Gentile V, Cattarino S et al. Oral ethinylestradiol in castration-resistant prostate cancer: A 10-year experience. *Int J Urol*. 2014.

14 Nishimura K, Nonomura N, Yasunaga Y et al. Low doses of oral dexamethasone for hormone-refractory prostate carcinoma. *Cancer*. 2000; **89**: 2570-6.

15 Venkitaraman R, Lorente D, Murthy V et al. A Randomised Phase 2 Trial of Dexamethasone Versus Prednisolone in Castration-resistant Prostate Cancer. *European urology*. 2015; **67**: 673-9.

16 Sweeney CJ, Chen YH, Carducci M et al. Chemohormonal Therapy in Metastatic Hormone-Sensitive Prostate Cancer. *The New England journal of medicine*. 2015; **373**: 737-46.

17 James ND, Sydes MR, Clarke NW et al. Addition of docetaxel, zoledronic acid, or both to first-line long-term hormone therapy in prostate cancer (STAMPEDE): survival results from an adaptive, multiarm, multistage, platform randomised controlled trial. *Lancet*. 2016; **387**: 1163-77.

18 Fukagai T, Namiki TS, Carlile RG, Yoshida H, Namiki M. Comparison of the clinical outcome after hormonal therapy for prostate cancer between Japanese and Caucasian men. *BJU international*. 2006; **97**: 1190-3.

19 Fizazi K, Scher HI, Molina A et al. Abiraterone acetate for treatment of metastatic castration-resistant prostate cancer: final overall survival analysis of the COU-AA-301 randomised, double-blind, placebo-controlled phase 3 study. *Lancet Oncol*. 2012; **13**: 983-92.

20 Rathkopf DE, Smith MR, de Bono JS et al. Updated interim efficacy analysis and long-term safety of abiraterone acetate in metastatic castration-resistant prostate cancer patients without prior chemotherapy (COU-AA-302). *European urology*. 2014; **66**: 815-25.

21 Saad F, de Bono J, Shore N et al. Efficacy Outcomes by Baseline Prostate-specific Antigen Quartile in the AFFIRM Trial. *European urology*. 2014.

- 22 Beer TM, Armstrong AJ, Rathkopf DE et al. Enzalutamide in metastatic prostate cancer before chemotherapy. *The New England journal of medicine*. 2014; **371**: 424-33.
- 23 Kimura G, Yonese J, Fukagai T et al. Enzalutamide in Japanese patients with chemotherapy-naive, metastatic castration-resistant prostate cancer: A post-hoc analysis of the placebo-controlled PREVAIL trial. *Int J Urol*. 2016; **23**: 395-403.
- 24 Satoh T, Uemura H, Tanabe K et al. A Phase 2 Study of Abiraterone Acetate in Japanese Men with Metastatic Castration-resistant Prostate Cancer Who Had Received Docetaxel-based Chemotherapy. *Jpn J Clin Oncol*. 2014; **44**: 1206-15.
- 25 Matsubara N, Uemura H, Satoh T et al. A Phase 2 Trial of Abiraterone Acetate in Japanese Men with Metastatic Castration-resistant Prostate Cancer and without Prior Chemotherapy (JPN-201 Study). *Jpn J Clin Oncol*. 2014; **44**: 1216-26.
- 26 Mizokami A, Namiki M. Reconsideration of progression to CRPC during androgen deprivation therapy. *The Journal of steroid biochemistry and molecular biology*. 2015; **145C**: 164-71.
- 27 Mizokami A, Koh E, Izumi K et al. Prostate cancer stromal cells and LNCaP cells coordinately activate the androgen receptor through synthesis of T and DHT from DHEA. *Endocrine-related cancer*. 2009; **16**: 1139-55.
- 28 Tran C, Ouk S, Clegg NJ et al. Development of a second-generation antiandrogen for treatment of advanced prostate cancer. *Science (New York, NY)*. 2009; **324**: 787-90.
- 29 Mizokami A, Izumi K, Konaka H et al. Understanding prostate-specific antigen dynamics in monitoring metastatic castration-resistant prostate cancer: implications for clinical practice. *Asian journal of andrology*. 2016.
- 30 Omlin A, Pezaro CJ, Zaidi S et al. Antitumour activity of abiraterone and diethylstilboestrol when administered sequentially to men with castration-resistant prostate cancer. *British journal of cancer*. 2013; **109**: 1079-84.
- 31 Hu R, Dunn TA, Wei S et al. Ligand-independent androgen receptor variants derived from splicing of cryptic exons signify hormone-refractory prostate cancer. *Cancer research*. 2009; **69**: 16-22.
- 32 Guo Z, Yang X, Sun F et al. A novel androgen receptor splice variant is

up-regulated during prostate cancer progression and promotes androgen depletion-resistant growth. *Cancer research*. 2009; **69**: 2305-13.

33 Liu LL, Xie N, Sun S, Plymate S, Mostaghel E, Dong X. Mechanisms of the androgen receptor splicing in prostate cancer cells. *Oncogene*. 2014; **33**: 3140-50.

34 Antonarakis ES, Lu C, Wang H et al. AR-V7 and resistance to enzalutamide and abiraterone in prostate cancer. *The New England journal of medicine*. 2014; **371**: 1028-38.

35 Welti J, Rodrigues DN, Sharp A et al. Analytical Validation and Clinical Qualification of a New Immunohistochemical Assay for Androgen Receptor Splice Variant-7 Protein Expression in Metastatic Castration-resistant Prostate Cancer. *European urology*. 2016; **70**: 599-608.

36 Tannock IF, de Wit R, Berry WR et al. Docetaxel plus prednisone or mitoxantrone plus prednisone for advanced prostate cancer. *The New England journal of medicine*. 2004; **351**: 1502-12.

37 Armstrong AJ, Garrett-Mayer ES, Yang YC, de Wit R, Tannock IF, Eisenberger M. A contemporary prognostic nomogram for men with hormone-refractory metastatic prostate cancer: a TAX327 study analysis. *Clin Cancer Res*. 2007; **13**: 6396-403.

38 Nishimura K, Nonomura N, Hashine K et al. Prolonged treatment with three-weekly docetaxel plus daily prednisolone for metastatic castration-resistant prostate cancer: a multicenter, phase II, open-label, non-comparative, extension study in Japan. *Int J Clin Oncol*. 2013; **18**: 306-13.

39 Kellokumpu-Lehtinen PL, Harmenberg U, Joensuu T et al. 2-Weekly versus 3-weekly docetaxel to treat castration-resistant advanced prostate cancer: a randomised, phase 3 trial. *Lancet Oncol*. 2013; **14**: 117-24.

40 Takeda M, Mizokami A, Mamiya K et al. The establishment of two paclitaxel-resistant prostate cancer cell lines and the mechanisms of paclitaxel resistance with two cell lines. *Prostate*. 2007; **67**: 955-67.

41 de Bono JS, Oudard S, Ozguroglu M et al. Prednisone plus cabazitaxel or mitoxantrone for metastatic castration-resistant prostate cancer progressing after docetaxel treatment: a randomised open-label trial. *Lancet*. 2010; **376**: 1147-54.

42 Paller CJ, Antonarakis ES. Cabazitaxel: a novel second-line treatment

for metastatic castration-resistant prostate cancer. *Drug design, development and therapy*. 2011; **5**: 117-24.

43 De Placido S, Rescigno P, Federico P et al. Cabazitaxel in castration resistant prostate cancer with brain metastases: 3 case reports. *World journal of clinical cases*. 2014; **2**: 228-31.

44 Takeda H, Akakura K, Masai M, Akimoto S, Yatani R, Shimazaki J. Androgen receptor content of prostate carcinoma cells estimated by immunohistochemistry is related to prognosis of patients with stage D2 prostate carcinoma. *Cancer*. 1996; **77**: 934-40.

45 Magi-Galluzzi C, Xu X, Hlatky L et al. Heterogeneity of androgen receptor content in advanced prostate cancer. *Modern pathology : an official journal of the United States and Canadian Academy of Pathology, Inc*. 1997; **10**: 839-45.

46 Prins GS, Sklarew RJ, Pertschuk LP. Image analysis of androgen receptor immunostaining in prostate cancer accurately predicts response to hormonal therapy. *The Journal of urology*. 1998; **159**: 641-9.

47 Onishi T, Shibahara T, Masui S, Sugino Y, Higashi S, Sasaki T. Efficacy of Ethinylestradiol Re-challenge for Metastatic Castration-resistant Prostate Cancer. *Anticancer Res*. 2016; **36**: 2999-3004.

48 Leibowitz-Amit R, Alimohamed N, Vera-Badillo FE et al. Retreatment of men with metastatic castrate-resistant prostate cancer with abiraterone. *Prostate*. 2014; **74**: 1462-4.

49 Shaw AT, Friboulet L, Leshchiner I et al. Resensitization to Crizotinib by the Lorlatinib ALK Resistance Mutation L1198F. *The New England journal of medicine*. 2016; **374**: 54-61.

50 de Bono JS, Logothetis CJ, Molina A et al. Abiraterone and increased survival in metastatic prostate cancer. *The New England journal of medicine*. 2011; **364**: 1995-2005.

51 Saad F, de Bono J, Shore N et al. Efficacy outcomes by baseline prostate-specific antigen quartile in the AFFIRM trial. *European urology*. 2015; **67**: 223-30.

52 Tu SM, Lin SH. Prostate cancer stem cells. *Clinical genitourinary cancer*. 2012; **10**: 69-76.

53 Deng Q, Tang DG. Androgen receptor and prostate cancer stem cells:

biological mechanisms and clinical implications. *Endocrine-related cancer*. 2015; **22**: T209-20.

54 Parker C, Nilsson S, Heinrich D et al. Alpha emitter radium-223 and survival in metastatic prostate cancer. *The New England journal of medicine*. 2013; **369**: 213-23.

55 Sartor O, Coleman R, Nilsson S et al. Effect of radium-223 dichloride on symptomatic skeletal events in patients with castration-resistant prostate cancer and bone metastases: results from a phase 3, double-blind, randomised trial. *Lancet Oncol*. 2014; **15**: 738-46.

56 Nilsson S, Franzen L, Parker C et al. Bone-targeted radium-223 in symptomatic, hormone-refractory prostate cancer: a randomised, multicentre, placebo-controlled phase II study. *Lancet Oncol*. 2007; **8**: 587-94.

57 Imbriaco M, Larson SM, Yeung HW et al. A new parameter for measuring metastatic bone involvement by prostate cancer: the Bone Scan Index. *Clin Cancer Res*. 1998; **4**: 1765-72.

58 Wakabayashi H, Nakajima K, Mizokami A et al. Bone scintigraphy as a new imaging biomarker: the relationship between bone scan index and bone metabolic markers in prostate cancer patients with bone metastases. *Annals of nuclear medicine*. 2013; **27**: 802-7.

59 Bruland OS, Nilsson S, Fisher DR, Larsen RH. High-linear energy transfer irradiation targeted to skeletal metastases by the alpha-emitter ²²³Ra: adjuvant or alternative to conventional modalities? *Clin Cancer Res*. 2006; **12**: 6250s-7s.

60 Miwa S, Mizokami A, Keller ET, Taichman R, Zhang J, Namiki M. The bisphosphonate YM529 inhibits osteolytic and osteoblastic changes and CXCR-4-induced invasion in prostate cancer. *Cancer research*. 2005; **65**: 8818-25.

61 Saad F, Carles J, Gillessen S et al. Radium-223 and concomitant therapies in patients with metastatic castration-resistant prostate cancer: an international, early access, open-label, single-arm phase 3b trial. *Lancet Oncol*. 2016; **17**: 1306-16.

62 Izumi K, Lin WJ, Miyamoto H et al. Outcomes and predictive factors of prostate cancer patients with extremely high prostate-specific antigen level. *Journal of cancer research and clinical oncology*. 2014.

63 Uemura K, Miyoshi Y, Kawahara T et al. Prognostic value of a

computer-aided diagnosis system involving bone scans among men treated with docetaxel for metastatic castration-resistant prostate cancer. *BMC cancer*. 2016; **16**: 109.

64 Soloway MS, Hardeman SW, Hickey D et al. Stratification of patients with metastatic prostate cancer based on extent of disease on initial bone scan. *Cancer*. 1988; **61**: 195-202.

65 Scher HI, Morris MJ, Stadler WM et al. Trial Design and Objectives for Castration-Resistant Prostate Cancer: Updated Recommendations From the Prostate Cancer Clinical Trials Working Group 3. *J Clin Oncol*. 2016; **34**: 1402-18.

66 Nakajima K, Nakajima Y, Horikoshi H et al. Enhanced diagnostic accuracy for quantitative bone scan using an artificial neural network system: a Japanese multi-center database project. *EJNMMI research*. 2013; **3**: 83.

67 Mitsui Y, Shiina H, Yamamoto Y et al. Prediction of survival benefit using an automated bone scan index in patients with castration-resistant prostate cancer. *BJU international*. 2012; **110**: E628-34.

68 Kaboteh R, Damber JE, Gjerdtsson P et al. Bone Scan Index: a prognostic imaging biomarker for high-risk prostate cancer patients receiving primary hormonal therapy. *EJNMMI research*. 2013; **3**: 9.

69 Anand A, Morris MJ, Larson SM et al. Automated Bone Scan Index as a quantitative imaging biomarker in metastatic castration-resistant prostate cancer patients being treated with enzalutamide. *EJNMMI research*. 2016; **6**: 23.

70 Koga N, Noguchi M. [Peptide vaccination for castration-resistant prostate cancer]. *Nihon rinsho Japanese journal of clinical medicine*. 2014; **72**: 2147-51.

Figure legends

Fig. 1 The comparison of antiandrogen lines number in the clinical trial of new hormonal therapies between foreign countries and Japan. **A.** Clinical trial of abiraterone acetate after docetaxel treatment. **B.** Clinical trial of enzalutamide after docetaxel treatment. This figure was modified from an article written by Mizokami et al.²⁹.

Fig. 2 Rechallenge of hormonal therapy after chemotherapy. **A.** The case that enzalutamide (Enz) was successful later using docetaxel (DOC), dexamethasone (DEX), TAK-700 (Orteronel, a CYP17A1 inhibitor like abiraterone acetate, was used in Phase II clinical study), Enz, and cabazitaxel (Cab) sequentially. **B.** The case that abiraterone was successful later using bicalutamide (Bic), flutamide (Flu), estramustine phosphate (EMT), ethinyl-estradiol (Ethinyl-E2), DOC, Enz, ITK-1 (peptide vaccine Phase III clinical study, DEX vs DEX + peptide vaccine)⁷⁰, and Cab sequentially.

Fig. 3 Seesaw theory. **A.** Prostate cancer tissue, especially CRPC tissue is heterogeneous including androgen-hypersensitive cells and androgen-independent cells. Hormonal therapies can attack androgen-hypersensitive cells but not androgen-independent cells. Although chemotherapy can attack androgen-independent cells and androgen-hypersensitive cells, the effect of chemotherapy on androgen-hypersensitive cells is weak. **B.** Androgen-hypersensitive cells increase during chemotherapy. **C.** Androgen-independent cells increase during hormonal therapy. **D.** Androgen-hypersensitive cells increase during other chemotherapy again.

Fig. 1

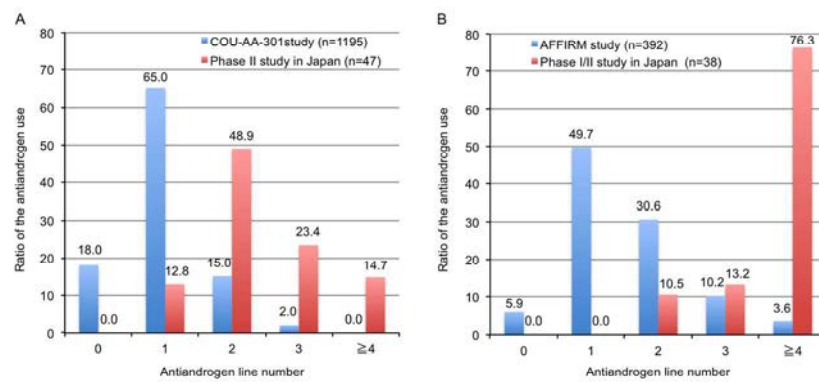


Figure 1/The comparison of antiandrogen lines number in the clinical trial of new hormonal therapies between foreign countries and Japan. A. Clinical trial of abiraterone acetate after docetaxel treatment. B. Clinical trial of enzalutamide after docetaxel treatment. This figure was modified from an article written by Mizokami et al.²².

595x793mm (72 x 72 DPI)

Fig. 2

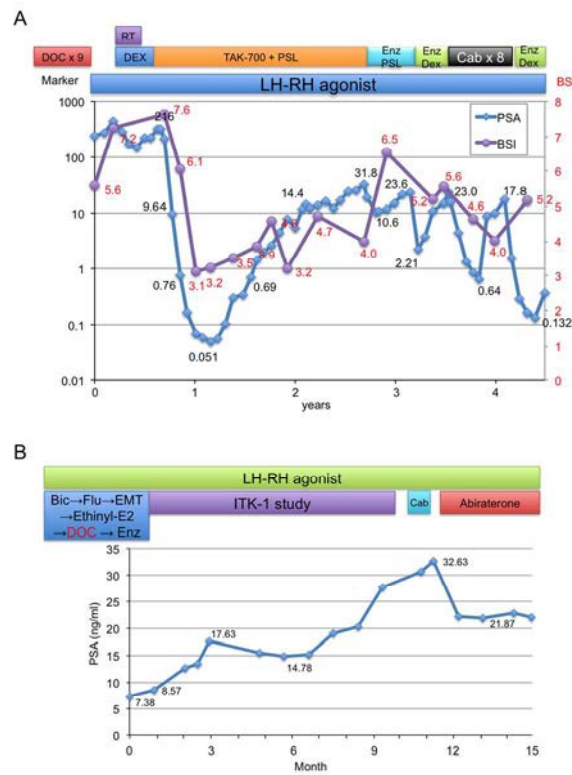


Fig. 2 Rechallenge of hormonal therapy after chemotherapy. A. The case that enzalutamide (Enz) was successful later using docetaxel (DOC), dexamethasone (DEX), TAK-700 (Orteronel, a CYP17A1 inhibitor like abiraterone acetate, was used in Phase II clinical study), Enz, and cabazitaxel (Cab) sequentially. B. The case that abiraterone was successful later using bicalutamide (Bic), flutamide (Flu), estramustine phosphate (EMT), ethinyl-estradiol (Ethinyl-E2), DOC, Enz, ITK-1 (peptide vaccine Phase III clinical study, DEX vs DEX + peptide vaccine) 67, and Cab sequentially.

595x793mm (72 x 72 DPI)

Fig. 3

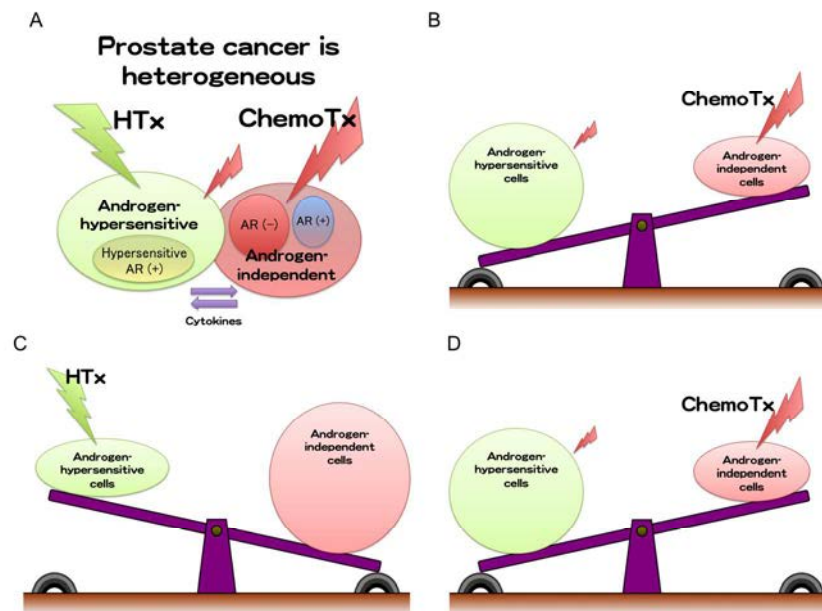


Fig. 3/ Seesaw theory. A. Prostate cancer tissue, especially CRPC tissue is heterogeneous including androgen-hypersensitive cells and androgen-independent cells. Hormonal therapies can attack androgen-hypersensitive cells but not androgen-independent cells. Although chemotherapy can attack androgen-independent cells and androgen-hypersensitive cells, the effect of chemotherapy on androgen-hypersensitive cells is weak. B. Androgen-hypersensitive cells increase during chemotherapy. C. Androgen-independent cells increase during hormonal therapy. D. Androgen-hypersensitive cells increase during other chemotherapy again.

595x793mm (72 x 72 DPI)