

Atmospheric behaviors of polycyclic aromatic hydrocarbons at a Japanese remote background site, Noto peninsula, from 2004 to 2014

著者	Tang Ning, Hakamata Mariko, Sato Kousuke, Okada Yumi, Yang Xiaoyang, Tatematsu Michiya, Toriba Akira, Kameda Takayuki, Hayakawa Kazuichi
journal or publication title	Atmospheric Environment
volume	120
page range	144-151
year	2015-11-01
URL	http://hdl.handle.net/2297/43419

doi: 10.1016/j.atmosenv.2015.08.090

Supplementary Information

Atmospheric behaviors of polycyclic aromatic hydrocarbons at a Japanese remote
background site, Noto peninsula, from 2004 to 2014

Ning Tang ^{a,*}, Mariko Hakamata ^a, Kousuke Sato ^a, Yumi Okada ^a, Xiaoyang Yang ^b,
Michiya Tatematsu ^a, Akira Toriba ^a, Takayuki Kameda ^c, Kazuichi Hayakawa ^a

^a Institute of Medical, Pharmaceutical and Health Sciences, Kanazawa University,
Kakuma-machi, Kanazawa 920-1192, Japan

^b State Key Laboratory of Environmental Criteria and Risk Assessment, Chinese Research
Academy of Environmental Sciences, Beijing 100012, China

^c Graduate School of Energy Science, Kyoto University, Gokasho, Uji 611-0011, Japan

Corresponding author

*Tel: +81 76 234 4458; fax: +81 76 234 4456; e-mail: n_tang@staff.kanazawa-u.ac.jp.

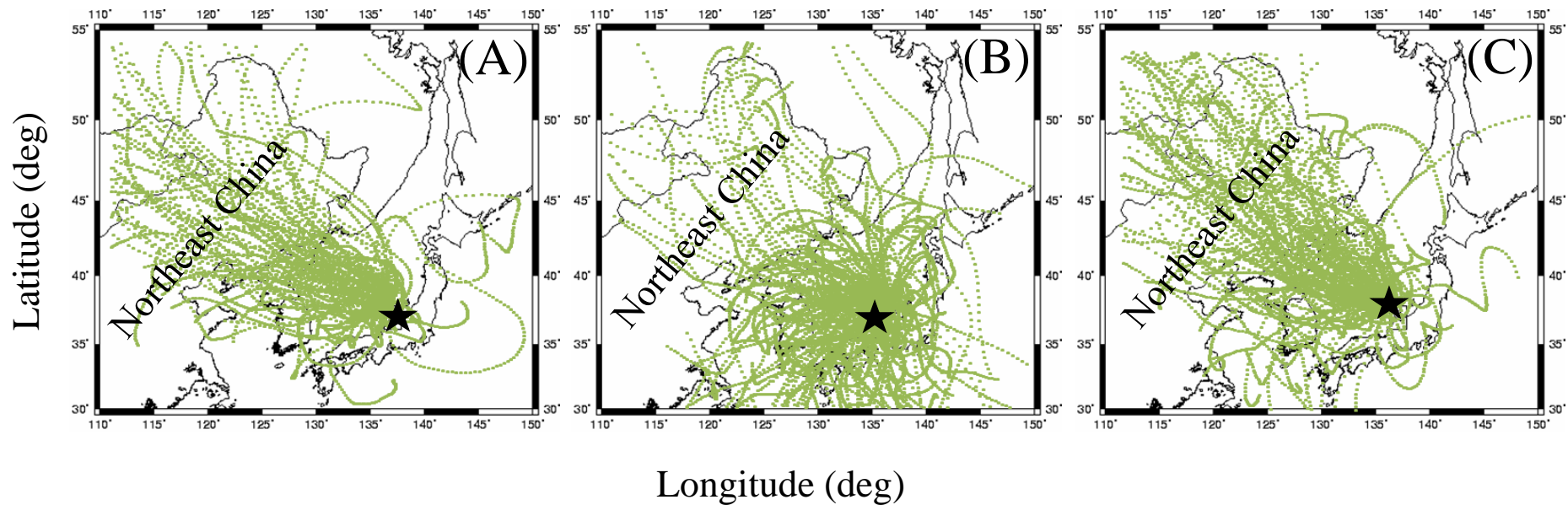


Fig. SI-1. Typical back trajectory analysis of air samples collected at NAMS during our sampling periods by using the Meteorological Data

Explorer online program (METEX, <http://db.cger.nies.go.jp/metex/>).

★ : Noto Air Monitoring Station (NAMS); (A): Jan. – Apr., 2007; (B): May – Sep., 2007; (C): Oct. – Dec., 2007.

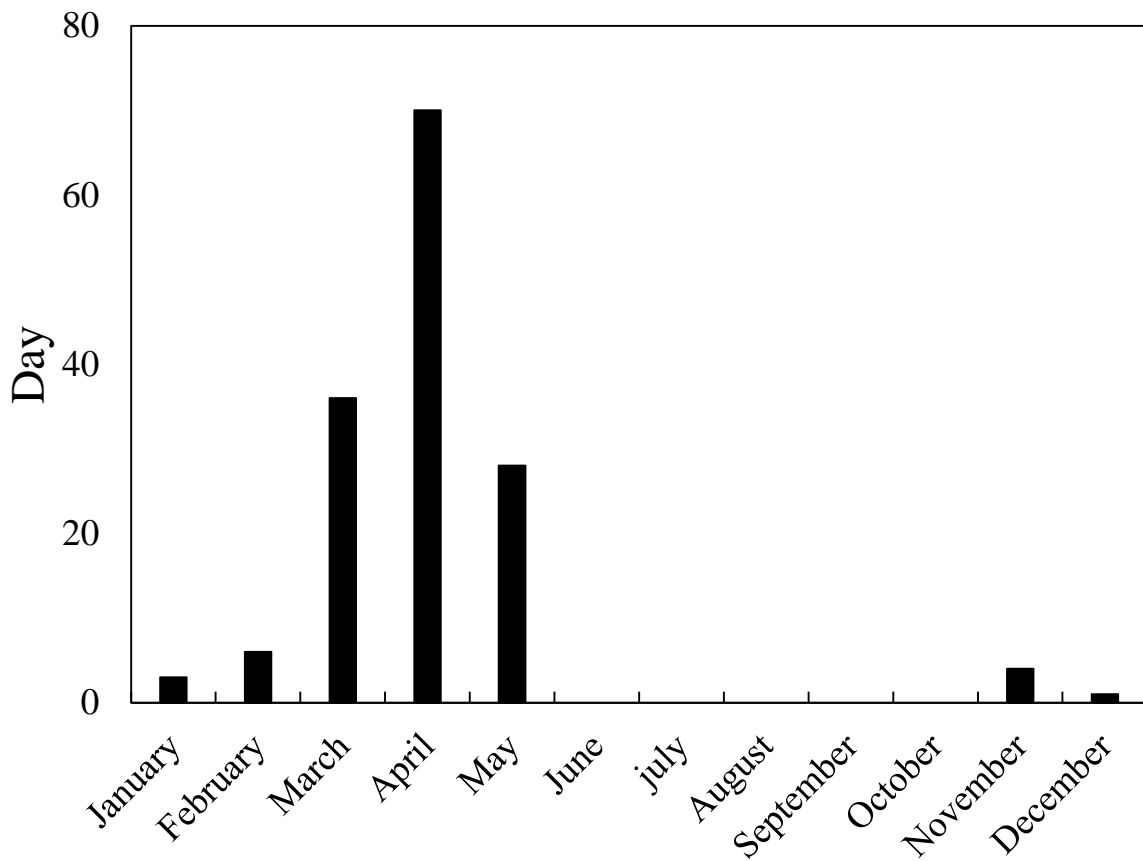


Fig. SI-2 Monthly Asian dust events observed in Ishikawa Prefecture from 1967 to 2010.

(Kanazawa Local Meteorological Office, Japan Meteorological Agency;

<http://www.jma-net.go.jp/kanazawa/mame/kousa/kousa.html>)

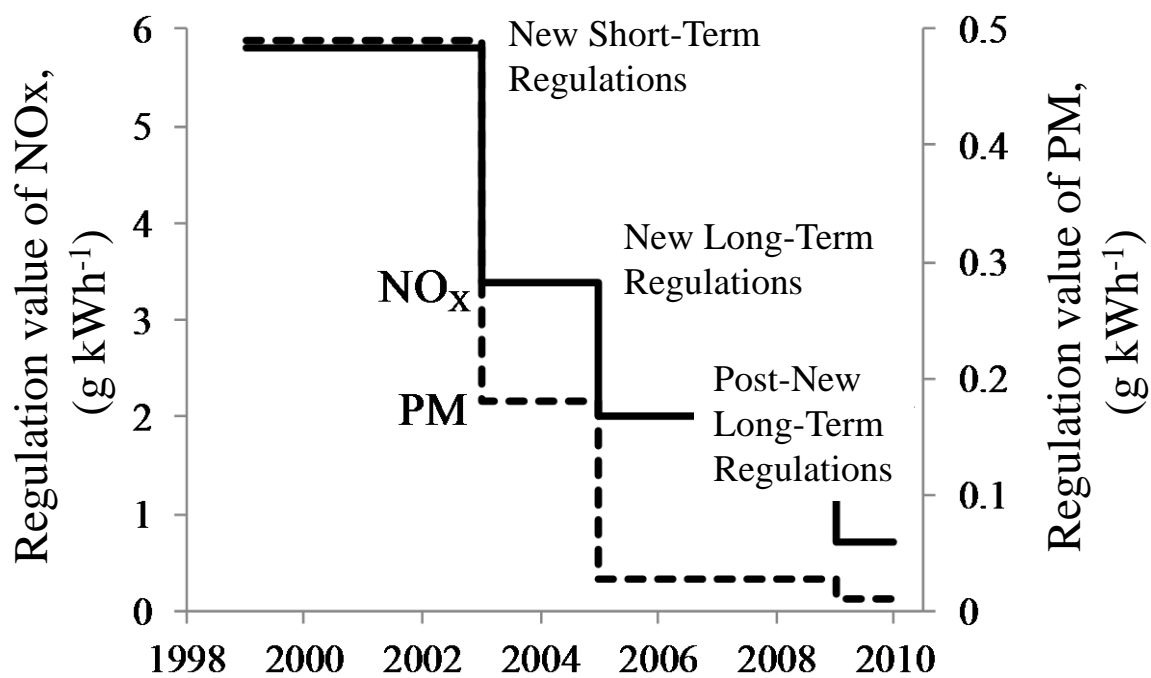


Fig. SI-3 Transition of Japanese regulation values of NO_x and particulates matters (PM) against new diesel-engine automobiles. (Hama et al., 2012)

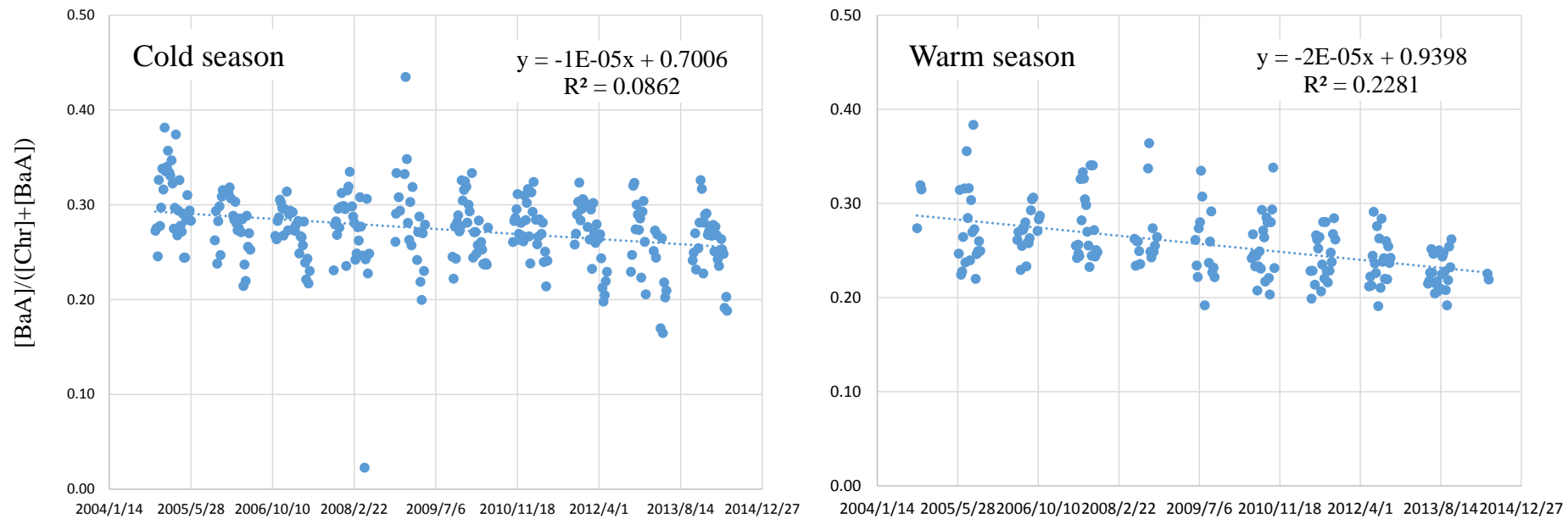


Fig. SI-4 Several PAH diagnostic ratios at NAMS from September 17, 2004 to June 8, 2014.

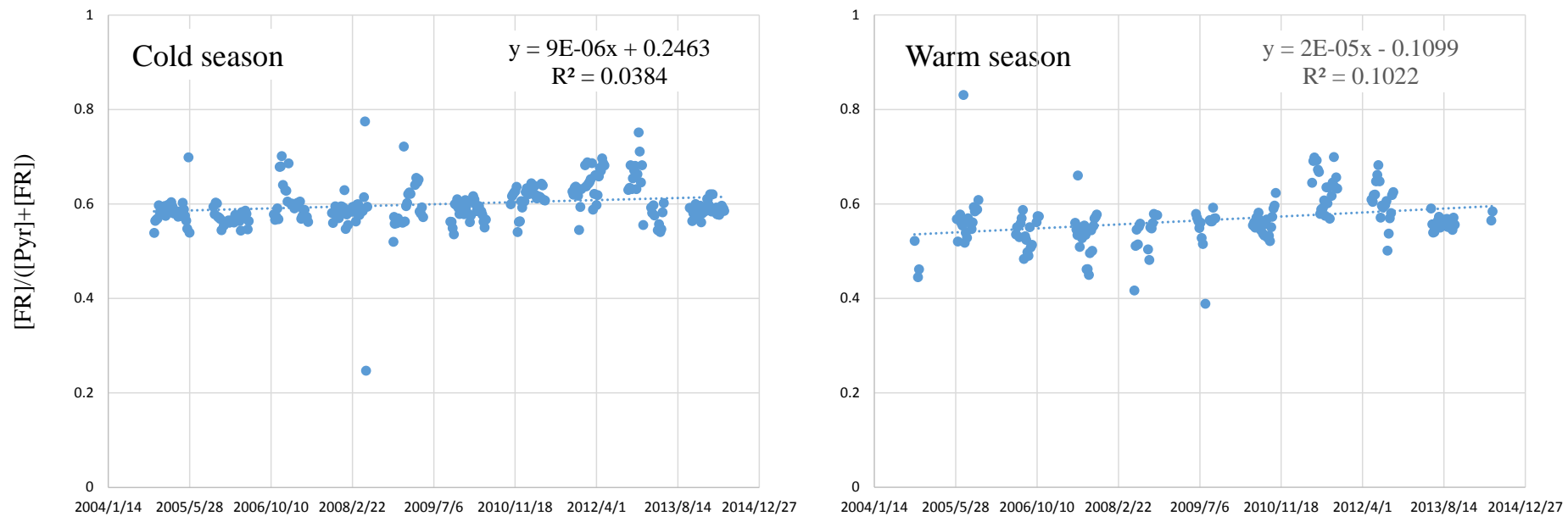


Fig. SI-4 Several PAH diagnostic ratios at NAMS from September 17, 2004 to June 8, 2014 (continued).

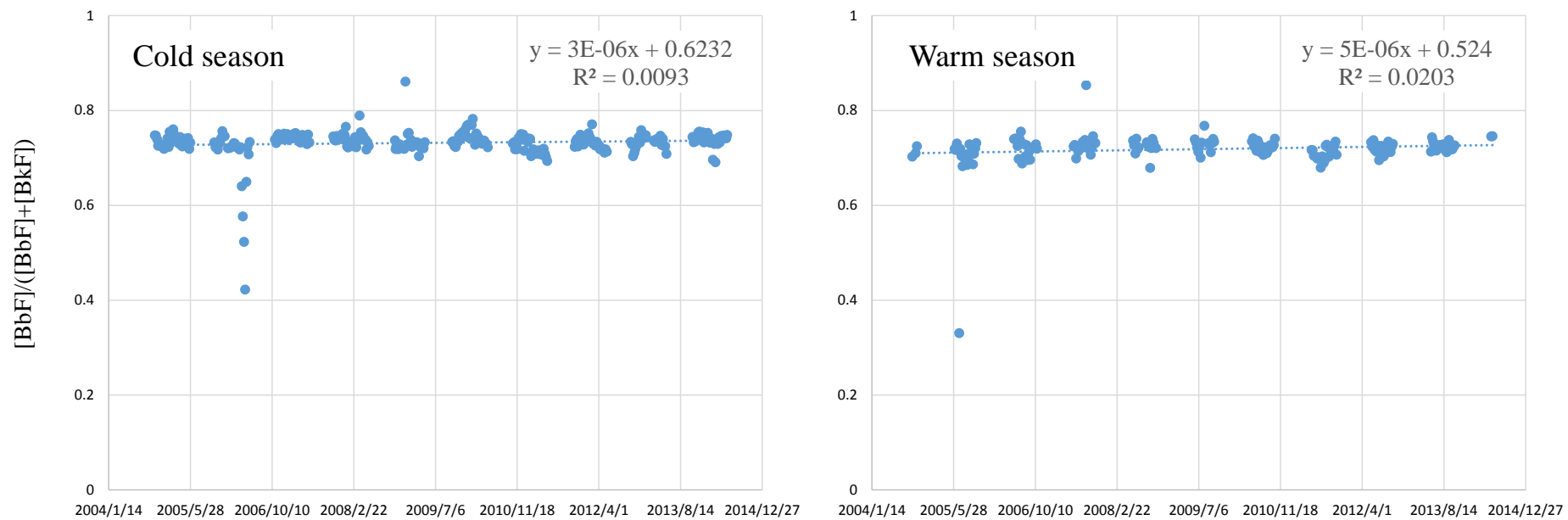


Fig. SI-4 Several PAH diagnostic ratios at NAMS from September 17, 2004 to June 8, 2014 (continued).

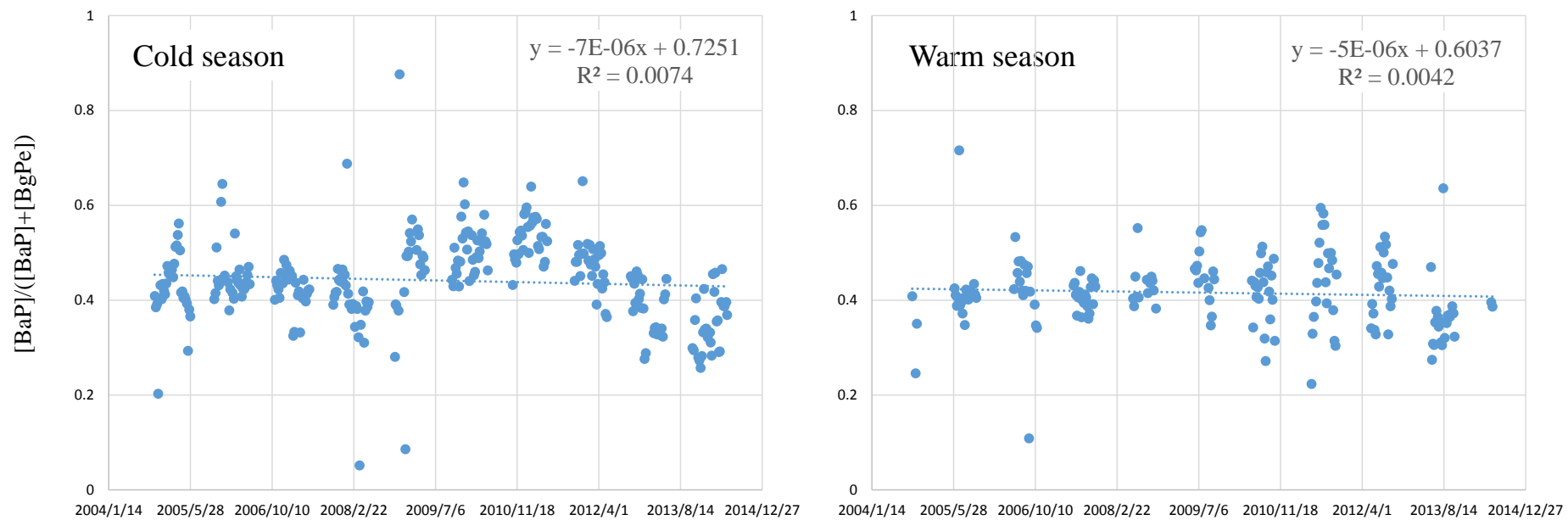


Fig. SI-4 Several PAH diagnostic ratios at NAMS from September 17, 2004 to June 8, 2014 (continued).

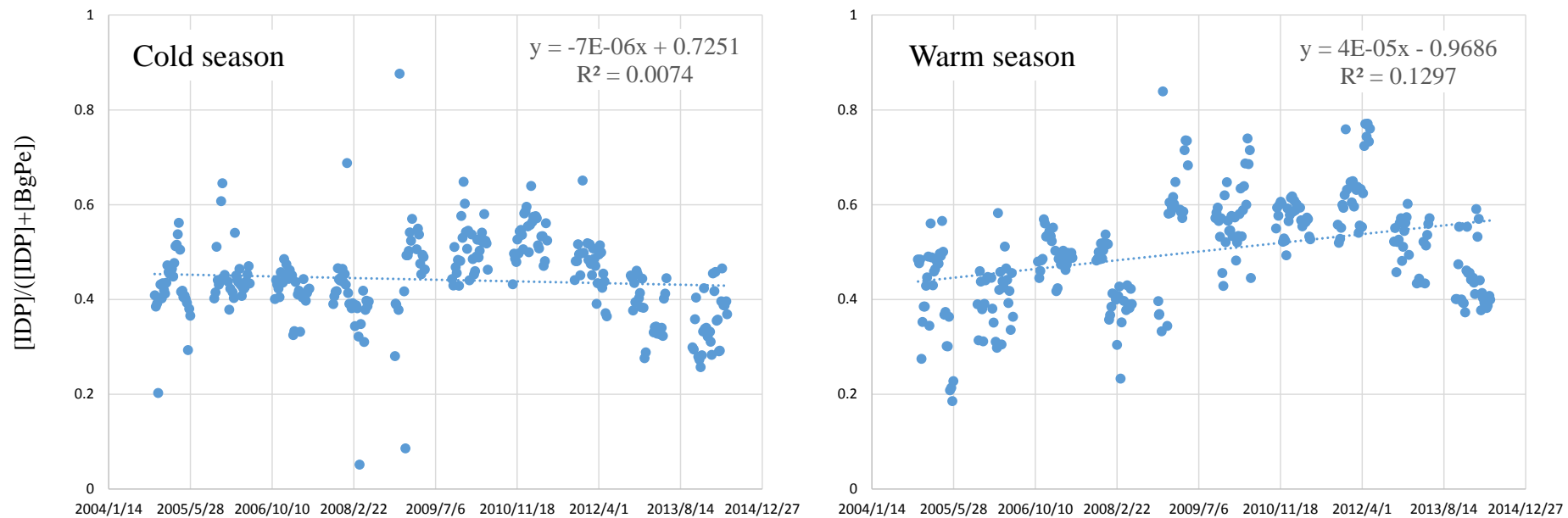


Fig. SI-4 Several PAH diagnostic ratios at NAMS from September 17, 2004 to June 8, 2014 (continued).