

Lysophosphatidic acid stimulates the proliferation and motility of malignant pleural mesothelioma cells through lysophosphatidic acid receptors, LPA1 and LPA2

著者	Yamada Tadaaki, Yano Seiji, Ogino Hirokazu, Ikuta Kenji, Kakiuchi Soji, Hanibuchi Masaki, Kanematsu Takanori, Taniguchi Tetsuo, Sekido Yoshitaka, Sone Saburo
journal or publication title	Cancer Science
volume	99
number	8
page range	1603-1610
year	2008-01-01
URL	http://hdl.handle.net/2297/11875

doi: 10.1111/j.1349-7006.2008.00848.x

Cancer Science

Lysophosphatidic acid stimulates the proliferation and motility of malignant pleural mesothelioma cells through LPA receptors, LPA₁ and LPA₂

Tadaaki Yamada¹, Seiji Yano^{1,2}, Hirokazu Ogino¹, Kenji Ikuta¹, Soji Kakiuchi¹, Masaki Hanibuchi¹, Takanori Kanematsu¹, Tetsuo Taniguchi³, Yoshitaka Sekido³, and Saburo Sone¹

¹*Department of Internal Medicine and Molecular Therapeutics, Institute of Health Biosciences, University of Tokushima Graduate School, Tokushima, Japan;*

²*Division of Medical Oncology, Cancer Research Institute, Kanazawa University, Ishikawa, Japan;*

³*Division of Molecular Oncology, Aichi Cancer Center Research Institute, Aichi, Japan;*

Short running title: LPA stimulates MPM via LPA receptors.

1
2
3
4
5
6
7 **Key words:** Lysophosphatidic acid; Lysophosphatidic acid receptors; malignant
8
9
10 pleural mesothelioma; cell proliferation; cell motility
11
12
13
14
15

16 **Address correspondence and reprint requests to:**
17

18
19 Saburo Sone M.D. & Ph.D., Department of Internal Medicine and Molecular
20
21
22 Therapeutics, Institute of Health Biosciences, University of Tokushima Graduate
23
24
25 School, Tokushima, 3-18-15 Kuramoto-cho, Tokushima 770-8503, Japan.
26
27

28 Phone: +81-88-633-7127; Fax: +81-88-633-2134,
29
30

31 E-mail: ssone@clin.med.tokushima-u.ac.jp
32
33
34
35
36
37
38
39
40
41
42
43
44
45
46
47
48
49
50
51
52
53
54
55
56
57
58
59
60

Summary

Lysophosphatidic Acid (LPA) is one of the simplest natural phospholipids. This phospholipid is recognized as an extracellular potent lipid mediator with diverse effects on various cells. Although LPA is shown to stimulate proliferation and motility via LPA receptors, LPA₁ and LPA₂, in several cancer cell lines, the role of LPA and LPA receptors for malignant pleural mesothelioma (MPM) was unknown. MPM is an aggressive malignancy with a poor prognosis and the incidence is increasing and is expected to more increase for another 10 to 20 years in worldwide. Therefore development of novel effective therapies needs urgently. In this study, we investigated the effect of LPA on the proliferation and motility of MPM cells. We found that all twelve cell lines and four clinical samples of MPM expressed LPA₁, and some of them expressed LPA₂, LPA₃, LPA₄, and LPA₅. LPA stimulated the proliferation and motility of MPM cells in a dose-dependent manner. Moreover, LPA-induced proliferation was inhibited by Ki16425, an inhibitor of LPA₁, and small interfering RNA against LPA₁, but not LPA₂. Interestingly, LPA-induced motility was inhibited by small interfering RNA against LPA₂, but not LPA₁, unlike a number of previous reports. These results indicate that LPA is a critical factor on proliferation through LPA₁, and on motility

1
2
3
4
5
6
7 though LPA₂ in MPM cells. Therefore, LPA and LPA receptors, LPA₂ as well as
8
9
10 LPA₁, represent potential therapeutic targets for patients with MPM.
11
12
13
14
15

16 **Abbreviations**

17
18 MPM, malignant pleural mesothelioma; SV40, the simian virus 40; LPA,
19
20
21
22 Lysophosphatidic acid; GPCRs, GTP binding protein-coupled receptors; FBS,
23
24
25 fetal bovine serum; RT-PCR, reverse transcription-PCR; BSA, bovine serum
26
27
28 albumin; MAPK, mitogen activated protein kinase; SCID, severe combined
29
30
31 immunodeficiency
32
33
34
35
36
37
38
39
40
41
42
43
44
45
46
47
48
49
50
51
52
53
54
55
56
57
58
59
60

Introduction

Malignant pleural mesothelioma (MPM) is an aggressive tumor arising from the mesothelial cells in the pleural cavity. It is frequently diagnosed at locally advanced stage and is refractory to conventional treatment regimens, such as chemotherapy and radiation therapy, and so its prognosis is extremely poor.

Several etiological factors, including asbestos (1,2), iron (3), the simian virus 40 (SV40), radiation and thorotrast (4), have been reported to be involved in the development of MPM. Of these factors, exposure to asbestos is most closely related to the development of MPM. Prior to the recognition of its adverse health effects, large amounts of asbestos were used worldwide. As the latent period between the first exposure to asbestos and the occurrence of MPM tends to be from 30 to 40 years, it is expected that there will be rapid increases in the number of MPM patients in Europe and Australia from 2015 to 2020 (5) and in Japan from 2010 to 2040 (2). Thus, the incidence of MPM is expected to increase further for another 10 to 20 years worldwide, although the disease has already reached its peak incidence in the USA (5). The major reasons for the poor prognosis of MPM are 1) the highly proliferating and invasive characteristics of the disease and 2) its resistance to conventional

1
2
3
4
5
6
7 chemotherapy and radiotherapy. Therefore, novel effective therapeutic
8
9
10 strategies based on the molecular mechanisms of proliferation and
11
12 motility/invasion of MPM are required to improve the prognosis of this disease.
13
14
15 While several growth factors, including platelet-derived growth factor A and B,
16
17 epidermal growth factor, transforming growth factor β , and vascular endothelial
18
19 growth factor, were reported to be involved in the progression of MPM (5), the
20
21 molecular mechanisms of the proliferation and motility/invasion of MPM are not
22
23 fully understood.
24
25
26
27
28
29
30

31 Lysophosphatidic acid (LPA) is one of the simplest natural phospholipids. It is
32
33 present in serum at concentrations of 2–20 μM (6) and is derived from various
34
35 enzymatic mechanisms, such as activated platelets, fibroblasts, adipocytes, and
36
37 ovarian tumors (6–8). Recently, this phospholipid has attracted a great deal of
38
39 attention as a potent lipid mediator responsible for multiple cellular processes
40
41 (9), such as cell proliferation, platelet aggregation, smooth muscle contraction,
42
43 and cytoskeletal reorganization. In fact, extracellular LPA has been shown to be
44
45 associated with various diseases, including atherosclerosis (10) and cancer
46
47 (11–13). LPA exerts its multiple biological functions *via* three types of G
48
49 protein-coupled receptor (GPCR), LPA₁, LPA₂, and LPA₃. These receptors
50
51
52
53
54
55
56
57
58
59
60

1
2
3
4
5
6
7 share 50–54% amino acid homology and transmit their signals *via* three families
8
9
10 of heterotrimeric G proteins, G_i, G_q, and G_{12/13} (14). Furthermore, more recent
11
12
13 studies have identified orphan GTP binding protein-coupled receptors (GPCRs),
14
15
16 LPA₄ (15) and LPA₅ (16).
17

18
19 The mechanisms of action of LPA receptors differ among subtypes, and they
20
21 are expressed at different levels in both normal and malignant tissues. In
22
23
24 normal tissues, LPA₁ is highly expressed in the brain and heart, LPA₂ is highly
25
26 expressed in the testis and leukocytes, LPA₃ is highly expressed in the kidney
27
28 and prostate (17,18), and LPA₄ is expressed highly in the ovary (15). In
29
30
31 malignant tumors, LPA₁ is dominant in brain tumors (19), LPA₂ is predominantly
32
33 expressed in colon, stomach, thyroid, and breast cancers (20–22), and LPA₃ is
34
35 expressed at relatively high levels in ovarian and prostate cancers (19,23).
36
37
38
39
40
41
42

43
44 Another study showed that the expression pattern of LPA receptors is
45
46 associated with cancer differentiation in gastric cancer cells (24). Moreover,
47
48
49 LPA₁ has recently been reported to control tumor cell proliferation in prostate
50
51
52 (25) and breast cancer cells (26) and LPA₂ was shown to mediate the growth of
53
54
55 ovarian (27), thyroid (21), and colon cancer cells (28). Interestingly, LPA₁ also
56
57
58 stimulates the motility of various types of cancer, such as pancreas, colon,
59
60

1
2
3
4
5
6
7 glioblastoma, and gastric cancer (19,24,28,29). Thus, LPA receptors play
8
9
10 crucial roles at least in cancer proliferation and motility/invasion. However, the
11
12
13 roles of LPA receptors and their downstream signaling pathways in MPM are
14
15
16 unknown.

17
18
19 The present study was performed to explore the expression of LPA receptors
20
21
22 in human MPM cell lines and further elucidate the roles of five LPA receptors in
23
24
25 the malignant properties of MPM cells in terms of proliferation and motility.
26
27
28
29
30
31
32
33
34
35
36
37
38
39
40
41
42
43
44
45
46
47
48
49
50
51
52
53
54
55
56
57
58
59
60

Materials and Methods

Cell lines and culture conditions.

In this study, we used twelve human MPM cell lines, EHMES-1, EHMES-10, MSTO-211H, Y-MESO-8A, NCI-H28, NCI-H290, NCI-H513, NCI-H2052, NCI-H2373, NCI-H2452, ACC-MESO-1, and ACC-MESO-4. EHMES-1 and EHMES-10 (30,31) were kindly provided by Dr Hironobu Hamada (Ehime University, Matsuyama, Japan). NCI-H290 and NCI-H513 were kindly provided by Dr Adi F. Gazdar (University of Texas Southwestern Medical Center, Dallas, TX). Y-MESO-8A, ACC-MESO-1, and ACC-MESO-4 (32) were established in Aichi Cancer Center Research Institute. MSTO-211H, NCI-H28, NCI-H2052, NCI-H2373, and NCI-H2452 were purchased from American Type Culture Collection (Manassas, VA).

All human tumor cell lines were maintained in RPMI 1640 medium supplemented with 10% fetal bovine serum (FBS), penicillin (100 U/ml), and streptomycin (50 µg/ml); this was designated as RPMI 1640 in this study. Cells were cultured in a humidified CO₂ incubator at 37°C.

Clinical specimens.

1
2
3
4
5
6
7 All human MPM samples were obtained from the Department of Internal
8
9
10 Medicine and Molecular Therapeutics, University of Tokushima Graduate School.
11
12
13 Written informed consent was obtained from all subjects prior to tissue
14
15
16 sampling.
17
18
19
20
21

22 **Reagents.**

23
24
25 1-Oleoyl-LPA (18:1) and Ki16425 were purchased from Sigma-Aldrich Inc. (St.
26
27
28 Louis, MO).
29
30
31
32
33
34

35 **Expression of LPA₁, LPA₂, LPA₃, LPA₄, and LPA₅.**

36
37
38
39
40 LPA₁, LPA₂, LPA₃, LPA₄, and LPA₅ mRNA expression were determined by
41
42
43 reverse transcription-PCR (RT-PCR). Total RNA samples were isolated using
44
45
46 an RNeasy Mini kit and RNase-free DNase kits (Qiagen, Valencia, CA) in
47
48
49 accordance with the manufacturer's recommendations. Total RNAs were
50
51
52 reverse transcribed using an Omniscript RT kit (Qiagen). The primers for LPA₁,
53
54
55 LPA₂, LPA₃, LPA₄, LPA₅, and β -actin were as follows:
56
57
58
59
60

1
2
3
4
5
6
7 LPA₁: 5'-TGGCTGCCATCTCTACTTCC-3' and

8
9 5'-AACCAATCCAGGAGTCCAGC-3', LPA₂:

10
11
12 5'-CATCATGCTTCCCGACAACG-3' and 5'-GGGCTTACCAAGGATACGCAG-3',

13
14
15
16 LPA₃: 5'-AGTGTCACTATGACAAGC-3' and 5'-GAGATGTTGCAGAGGC-3',

17
18
19 LPA₄: 5'-TGAAGGCTTCTCCAAACGTGTCTG-3' and

20
21
22 5'-GTTTCAGAGTTGCAAGGCACAAGGT-3', LPA₅:

23
24
25 5'-CTGGATCTAAACCGCCACAG-3' and 5'-GCCTGGAAAAGGGGATGT-3',

26
27
28 and β -actin: 5'-AAGAGAGGCATCCTCACCCCT-3' and

29
30
31 5'-TACATGGCTGGGGTGTGAA-3'.

32
33
34
35 PCR was performed with Ex Taq Hot Start Version (Takara Bio, Shiga, Japan).

36
37
38 The bands were visualized by ethidium bromide staining. Data shown are

39
40
41 representative of three independent experiments.

42 43 44 45 46 47 48 49 50 **Cell proliferation assay.**

51
52
53
54 Cell proliferation was measured by the

55
56
57 3-(4,5-dimethylthiazol-2-yl)-2,5-diphenyltetrazolium bromide dye reduction

58
59
60 method (33). Briefly, tumor cells seeded in 96-well plates (5×10^3 per well) were

1
2
3
4
5
6
7 incubated in RPMI 1640 for 24 h. The cells were starved for 24 h by replacing
8
9
10 the medium with serum-free RPMI 1640 medium containing 0.1% fatty acid-free
11
12 bovine serum albumin (BSA), with or without LPA and/or Ki16425, an inhibitor
13
14 of LPA₁ (and LPA₃ at higher doses) (34). The cells were cultured for 48 h. Then,
15
16 an aliquot of 50 µL of stock 3-(4,5-dimethylthiazol-2-yl)-2,5-diphenyltetrazolium
17
18 bromide solution (2 mg/mL; Sigma, St. Louis, MO) was added to each plate and
19
20 the cells were incubated for 2 h at 37°C. The media containing
21
22 3-(4,5-dimethylthiazol-2-yl)-2,5-diphenyltetrazolium bromide solution were
23
24 removed and the dark blue crystals were dissolved by adding 100 µL of DMSO.
25
26 Absorbance was measured with an MTP-120 microplate reader (Corona Electric,
27
28 Ibaraki, Japan) at test and reference wavelengths of 550 and 630 nm,
29
30 respectively. Data shown are representative of three independent experiments.
31
32
33
34
35
36
37
38
39
40
41
42
43
44
45
46
47
48

49 ***Cell migration assay.***
50
51
52

53 Cell migration was quantified in Falcon Cell Culture Inserts (pore size 8 µm; BD
54
55 Biosciences, San Jose, CA). Cells suspended in serum-free RPMI 1640
56
57 containing 0.1% fatty acid-free BSA, with or without LPA and/or Ki16425, were
58
59
60

1
2
3
4
5
6
7 added to the upper chamber (1×10^5 cells in 100 μ l/well). Serum-free RPMI 1640
8
9
10 containing 0.1% fatty acid-free BSA, containing human fibronectin (5 μ g/ml; BD
11
12 Biosciences) as a chemoattractant was placed in the lower chamber. When the
13
14
15
16 cells treated with Ki16425, the cells were preincubated with 10 μ M Ki16425 for
17
18
19 30 min. The cells were allowed to migrate for 3 h at 37°C. Non-migratory cells
20
21
22 were removed from the top filter surface with a cotton swab. Migrated cells,
23
24
25 attached to the bottom surface, were fixed with methanol, stained with Giemsa,
26
27
28 mounted, and then counted. Data shown are representative of three
29
30
31 independent experiments.
32
33
34
35
36
37
38
39
40
41

RNA interference.

42
43 Three different duplexed Stealth™ RNAi (Invitrogen, Carlsbad, CA) against
44
45
46 LPA₁ and LPA₂, and Stealth RNAi Negative Control Kit (Invitrogen) were used
47
48
49 for RNA interference assay. Briefly, aliquots of 1×10^5 211H, H28, or H2052 cells
50
51
52 in 2 ml of antibiotic-free medium were plated on 6-well plates and incubated at
53
54
55 37°C for 24 h, and the cells were then transfected with siRNA (250 pmol) or
56
57
58 scramble RNA (siSCR) using Lipofectamine 2000 (5 μ l) in accordance with the
59
60

1
2
3
4
5
6
7 manufacturer's instructions. After 24-h incubation, the cells were washed twice
8
9
10 with PBS, and incubated in antibiotic-containing medium. These cells were then
11
12
13 used for proliferation or migration assay as described above. LPA₁ and LPA₂
14
15
16 knockdown were confirmed by RT-PCR analysis. The sense sequences of
17
18
19 siRNA were as follows:

20
21
22 siLPA1#1: 5'- AACCAAUCCAGGAGUCCAGCAGAUG-3' and 5'-

23
24
25 CAUCUGCUGGACUCCUGGAUUGGUU-3'; siLPA1#2: 5'-

26
27
28 AUUACAGGGAUGGAAGUAGAGAUGG-3' and 5'-

29
30
31 CCAUCUCUACUCCAUCCCUGUAAU-3'; siLPA1#3: 5'-

32
33
34 AUAGAUUGCCACCAUGACCAAUAGG-3' and 5'-

35
36
37 CCUAUUGGUCAUGGUGGCAAUCUAU-3'; siLPA2#1: 5'-

38
39
40 UACACAGCAGCAUUGACCAGUGAGU-3' and 5'-

41
42
43 ACUCACUGGUCAAUGCUGCUGUGUA-3'; siLPA2#2: 5'-

44
45
46 AUGUAUAGUGGACAGACUCGCGGGU-3' and 5'-

47
48
49 ACCCGCGAGUCUGUCCACUAUACAU-3'; siLPA2#3: 5'-

50
51
52 UGUGGAACAUGAGGAAGAGGUAGGC-3' and 5'-

53
54
55 GCCUACCUCUCCUCAUGUCCACA-3'.

Western blotting.

1
2
3
4
5
6
7
8
9
10 Tumor cells were washed twice with PBS, harvested in cell lysis buffer (20 mM
11
12 Tris, pH7.4, 150 mM NaCl, 1 mM EDTA, 1 mM EGTA, 1% Triton X-100, 2.5 mM
13
14 sodium pyrophosphate, 1 mM β -glycerolphosphate, 1 mM Na_3VO_4 , 1 $\mu\text{g}/\text{ml}$
15
16 leupeptin, and 1 mM phenylmethylsulfonyl fluoride), and flash-frozen on dry ice.
17
18
19 After allowing the cells to thaw, the cell lysates were collected with a rubber
20
21 scraper, sonicated, and centrifuged at $14000\times g$ (4°C for 20 min). The total
22
23 protein concentration was measured using a Pierce BCA Protein Assay Kit
24
25 (Pierce, Rockland, IL). Cell lysates were subjected to SDS-polyacrylamide gel
26
27 electrophoresis, and the proteins were then transferred onto PVDF membranes
28
29 (Atto, Tokyo, Japan). The membranes were blocked with Blocking One (Nacalai
30
31 Tesque Inc, Kyoto, Japan) for 1 h at room temperature, and then the blots were
32
33 incubated at 4°C overnight with anti-phospho-p44/42 mitogen-activated protein
34
35 kinase (MAPK) (Thr202/Tyr204), anti-p44/42 MAPK (1:1000 dilution; Cell
36
37 Signaling Technology, Beverly, MA), or anti- β -actin antibody (1:5000 dilution;
38
39 Sigma), followed by incubation for 2 h at room temperature with secondary Ab
40
41 (horseradish peroxidase-conjugated species-specific Ab). Immunoreactive
42
43 bands were visualized using enhanced chemiluminescent substrate (Pierce).
44
45
46
47
48
49
50
51
52
53
54
55
56
57
58
59
60

RhoA activity assay.

We determined RhoA activation as the amount of RhoA-GTP binding using a G-LISA RhoATM Activation Assay Biochem KitTM (Cytoskeleton, Denver, CO), in accordance with the manufacturer's recommendations. Briefly, tumor cells (2×10^5 per well) seeded in 6-well plates were incubated in RPMI 1640 containing 10% FBS for 24 h. The cells were starved for 24 h by replacing the medium with serum-free RPMI 1640 medium containing 0.1% BSA. The dishes were then treated with LPA (10 μ M) for 0, 1, 3, 6, 12, and 30 min. The tumor cells were washed twice with PBS and harvested in cell lysate with a cell scraper, sonicated, and centrifuged at $10000 \times g$ (4°C for 2 min). The total protein concentration was measured using Precision RedTM Advanced Protein Assay Reagent. Equal amounts of cell lysate protein were incubated in Rho-GTP affinity plates for 30 min at 4°C. To the plates was added anti-RhoA primary antibody, followed by secondary HRP-labeled antibody and HRP detection reagent, and incubated at room temperature for the time recommended by the manufacturer. Absorbance was measured with an MTP-120 microplate reader at wavelength of 490 nm. Data shown are representative of three independent

1
2
3
4
5
6
7 experiments with similar results.
8
9

10
11
12
13 ***Statistical analysis.***
14

15
16 All data, expressed as means \pm SE, were analyzed by one-way analysis of
17
18 variance. The statistical significance of differences was assessed by the Fisher
19
20 protected least-significant difference test. *P* values less than 0.05 were
21
22
23 considered statistically significant. Statistical analyses were performed using
24
25
26
27
28
29 StatView ver.5.0.
30
31
32
33
34
35
36
37
38
39
40
41
42
43
44
45
46
47
48
49
50
51
52
53
54
55
56
57
58
59
60

Results

Human MPM cell lines expressed LPA₁, LPA₂, LPA₃, LPA₄, and LPA₅ at various levels.

In the first set of experiments, we examined the mRNA expression of five LPA receptors (LPA₁, LPA₂, LPA₃, LPA₄, and LPA₅) in twelve human MPM cell lines by RT-PCR (Fig. 1A). All of the MPM cell lines examined expressed LPA₁ mRNA at various levels. Of these cell lines, 211H, H28, H290, H2052, and H2373 cells showed higher levels of expression as compared with the others. On the other hand, some of the MPM cell lines expressed LPA₂. Y-MESO-8A, H290, H2052, and ACC-MESO-4 cells showed high levels of LPA₂ expression as compared with the other cell lines. Similarly, some of the MPM cell lines expressed LPA₃, LPA₄, and LPA₅. In parallel experiments, we examined LPA₁, LPA₂, LPA₃, LPA₄, and LPA₅ mRNA expression in tumor specimens obtained from four patients with MPM (Fig. 1B). Consistent with the results in the cell lines examined, all samples expressed LPA₁ and some expressed LPA₂, LPA₃, LPA₄, and LPA₅.

LPA stimulated the proliferation of MPM cells via LPA₁.

1
2
3
4
5
6
7 We determined the effects of LPA on proliferation of MPM cells. Exogenous
8
9
10 LPA at physiological concentrations (up to 20 μ M) significantly stimulated the
11
12 proliferation of 5 of the 11 MPM cell lines examined (data not shown). Of these
13
14
15 cell lines, 211H and H28 cells responded well to LPA in a dose-dependent
16
17
18 manner (Fig. 2A). Therefore, these two cell lines were used to investigate
19
20
21 whether LPA receptors are involved in LPA-induced proliferation, when the
22
23
24 effects of Ki16425, an inhibitor of LPA₁ (and LPA₃ at higher doses), on
25
26
27 proliferation were examined. Ki16425 inhibited LPA-induced proliferation of both
28
29
30 211H and H28 cells in a dose-dependent manner (Fig. 2B). In a parallel
31
32
33 experiment, we examined the effects of small interfering RNA (siRNA) against
34
35
36 LPA₁ and LPA₂. Knockdown of LPA₁ resulted in significant inhibition of the
37
38
39 LPA-induced proliferation of both 211H and H28 cells. These results were
40
41
42 confirmed using serum-starved media with LPA, as well as media containing
43
44
45 10% FBS (data not shown). However, knockdown of LPA₂ had little impact on
46
47
48 LPA-induced proliferation of 211H or H28 cells (Fig. 2C). These results
49
50
51 indicated that LPA stimulated the proliferation of these two MPM cell lines *via*
52
53
54
55 LPA₁ receptors.
56
57
58
59
60

LPA activates p44/42 MAPK through LPA₁.

To determine the mechanism by which LPA₁-mediated proliferation of MPM cells, we next examined the phosphorylation of MAPK, which is the downstream signal of GPCRs. MPM cells were stimulated with LPA (10 μM) for 0, 2, or 6 h, and the phosphorylation of MAPK was evaluated by Western blotting. While LPA did not affect MAPK protein expression, it induced the phosphorylation of MAPK (phospho-p44/42 MAPK) in both 211H and H28 cells. The level of phosphorylation became highest after 2 h and the effect was still substantial after 6 h (Fig. 3A). Therefore, we evaluated the phosphorylation of MAPK after 2-h incubation with LPA. In a parallel experiment, siRNA knockdown of LPA₁, but not of LPA₂, markedly reduced the phosphorylation of p44/42 MAPK in these two MPM cell lines (Fig. 3B), indicating that LPA activates the p44/42 MAPK pathway *via* LPA₁.

LPA stimulates cell motility via LPA₂.

We next examined the effect of LPA on the motility of MPM cells using a cell migration assay. LPA stimulated migration of 6 of 10 MPM cell lines (data not shown). Of these MPM cell lines, LPA induced a significant increase in

1
2
3
4
5
6
7 migration of H2052, H2373, and ACC-MESO-4 cells in a dose-dependent
8
9
10 manner (Fig. 4A). However, it did not affect the proliferation of these MPM cells
11
12 (data not shown). These observations exclude the possibility that the effect of
13
14 cell motility was attributable to differences in proliferation. In turn, these cell
15
16 lines were used to examine whether LPA receptors were involved in
17
18
19 LPA-induced motility, when the effect of Ki16425, an inhibitor of LPA₁ (and LPA₃
20
21 at higher doses), on the motility was examined. Ki16425 had no effect on
22
23 LPA-induced motility in these MPM cells (Fig. 4B). To clarify the involvement of
24
25 LPA₁ and LPA₂, we further knocked down LPA₁ and LPA₂ expression,
26
27 respectively, with siRNA using H2052 cells, because LPA induced the motility of
28
29 H2052 cells most efficiently. Knockdown of LPA₂ markedly inhibited
30
31 LPA-induced motility of H2052 cells, while knockdown of LPA₁ did not (Fig. 4C).
32
33
34
35
36
37
38
39
40
41
42
43
44
45
46
47
48
49
50
51
52
53
54
55
56
57
58
59
60

These results strongly suggest that LPA induces motility *via* LPA₂ in H2052 cells.

LPA activates RhoA through LPA₂.

We next investigated the effects of LPA on the activation of RhoA, which is a downstream signal of GPCRs and one of the key molecules for cell motility.

1
2
3
4
5
6
7 H2052 cells were stimulated with LPA (10 μ M) for 0, 1, 3, 6, 12, or 30 min, and
8
9
10 activation of RhoA was evaluated by G-LISA RhoATM Activation Assay
11
12 (Biochem KitTM). LPA induced activation of RhoA, the degree of which became
13
14
15
16 strongest after 1 min, and the effect decreased within 30 min (Fig. 5A).
17

18
19 Therefore, we evaluated RhoA after 1-min incubation with LPA. Knockdown of
20
21
22 LPA₂ with siRNA, but not of LPA₁, significantly reduced RhoA activation in
23
24
25 comparison with the control level (Fig. 5B). These results suggest that LPA
26
27
28 stimulates cell motility through an LPA₂-mediated RhoA pathway.
29
30
31
32
33
34
35
36
37
38
39
40
41
42
43
44
45
46
47
48
49
50
51
52
53
54
55
56
57
58
59
60

Discussion

In the present study, we demonstrated that all of the twelve cell lines and four clinical samples of MPM examined expressed LPA₁, while other types of LPA receptors (LPA₂, LPA₃, LPA₄, and LPA₅) were expressed only in some of the cell lines and clinical samples, and LPA stimulated the proliferation and motility of several MPM cell lines in a dose-dependent manner. There was no apparent correlation between the response to LPA and the expression level of LPA receptors, although MPM cells with high level of LPA₁ tend to be stimulated proliferation by LPA (data not shown). The histological subtypes, such as epithelial, biphasic, and sarcomatoid, were not also particularly correlated with the response to LPA (data not shown). We also examined the role of LPA and its receptors using a non-cancerous mesothelial cell line, Met-5A. Met-5A cells expressed LPA₁ and LPA₂, and LPA induced the proliferation, but not migration (data not shown). These observations suggest that MPM is biologically heterogeneous and uses various factors and signaling pathways for cell proliferation and motility. Our results also clearly showed that particular populations of MPM cells essentially utilized the LPA/LPA receptor pathway for both cell proliferation and motility. As the biomarker for MPM, Lindholm et.al

1
2
3
4
5
6
7 reported that gene copy number losses are a major mechanism for
8
9
10 carcinogenesis and copy number changes are associated with a recurrent
11
12 pattern (35). Pass et al. reported to predict survival and progression of MPM
13
14 patients, using a 27-gene expression profiles (36). However, to our knowledge,
15
16 this is the first report of the involvement of LPA/LPA receptors in the malignant
17
18
19 phenotype of MPM.
20
21
22
23

24
25 LPA is known to act on specific GPCRs to elicit a wide range of cellular
26
27 responses, ranging from cell proliferation and motility of various types of solid
28
29 tumor (37). MPM tends to advance locally with pleural effusion, rather than
30
31 distant metastasis, and the extent of the disease is directly associated with the
32
33 prognosis of MPM patients (5). It is important to understand the molecular
34
35 mechanism of MPM pathogenesis in terms of proliferation and motility, because
36
37 molecules responsible for MPM progression seem to be ideal targets for
38
39 therapy of MPM.
40
41
42
43
44
45
46
47
48
49

50 Recently, the differential roles of five GPCRs as LPA receptors have
51
52 attracted a great deal of attention. Of these receptors, LPA₁ and LPA₂ are
53
54 thought to play important roles in the signaling pathways of cancer cells.
55
56
57
58 Several studies indicated that LPA₁ controls cell proliferation in prostate cancer
59
60

1
2
3
4
5
6
7 (25) and breast cancer cells (26). Similarly, LPA₂ was found to mediate
8
9
10 LPA-induced growth of ovarian (27), thyroid (21), and colon cancer cells (29).
11
12
13 Thus, the role of LPA receptors in cell proliferation triggered by LPA appears to
14
15
16 depend on the type of cancer cell line examined. In this study, we demonstrated
17
18
19 that LPA₁, but not LPA₂, is a key receptor in LPA-stimulated proliferation of
20
21
22 MPM cells using silencing of LPA receptors.
23

24
25 GPCRs, including LPA receptors, have multiple intracellular signaling
26
27
28 mechanisms by small GTPase proteins, Ras, Rho, Rac, and their downstream
29
30
31 cascades (37,38). The activation of Ras-MAPK responsible for cell proliferation
32
33
34 can lead to the nuclear translocation of MAPK followed by gene transcription
35
36
37 and cell cycle progression, and this signaling plays a pivotal role in cancer cell
38
39
40 proliferation and differentiation. In the present study, we showed that LPA
41
42
43 activated the p44/42 MAPK pathway and siRNA for LPA₁, but not LPA₂, caused
44
45
46 marked inhibition of cell proliferation and phosphorylation of p44/42 MAPK.
47
48
49
50 These results strongly suggest that MAPK is involved in the LPA₁-mediated
51
52
53 proliferation of MPM cells induced by LPA.
54

55
56 MPM cells have high motility, facilitate free movement in the pleural cavity
57
58
59 during respiration by extending lubricating glycoproteins, and show disordered
60

1
2
3
4
5
6
7 invasion into the thoracic cavity (5). LPA is already well known to stimulate cell
8
9
10 motility in many cell types, such as fibroblasts, gliomas, and T-cell lymphomas
11
12
13 (39). LPA-stimulated motility of cancer cells was recently reported to require
14
15
16 signaling *via* LPA₁ in many types of solid tumor, including pancreas, colon,
17
18
19 glioblastoma, and gastric cancer (19,24,28,29). However, this was not the case
20
21
22 in our studies that indicated that the motility of MPM cells was augmented by
23
24
25 LPA through LPA₂, but not LPA₁. This was confirmed in the present study using
26
27
28 two different methods. First, treatment with Ki16425, an inhibitor of LPA₁, did
29
30
31 not inhibit cell migration. Second, knockdown of LPA₂, but not LPA₁, effectively
32
33
34 suppressed LPA-induced motility of MPM (H2052) cells. These results
35
36
37 demonstrated that LPA-induced motility of MPM cells is mediated partly, if not
38
39
40 completely, through its interaction with LPA₂.
41
42

43
44 RhoA is a small GTPase protein that mediates actin microfilament organization
45
46
47 necessary for adhesion, motility, and changes in cell shape (40). Recent studies
48
49
50 have implicated the pathway of RhoA activation, which acts downstream of LPA
51
52
53 receptors, in tumor invasion (41,42). We demonstrated that LPA activated RhoA
54
55
56 and that the effect was significantly, but not completely, diminished by
57
58
59 knockdown of LPA₂, suggesting that LPA stimulated migration of H2052 cells
60

1
2
3
4
5
6
7 was mediated by LPA₂ through the RhoA activation pathway. Further studies
8
9
10 are warranted to determine the involvement of other signaling pathways in
11
12
13 LPA₂-mediated cell-motility of MPM cells.
14

15
16 To explore antitumor activity by inhibiting LPA receptors, we used an inhibitor
17
18 of LPA₁, Ki16425, because it is only one commercially available LPA inhibitor at
19
20 present. The severe combined immunodeficiency (SCID) mice bearing
21
22 subcutaneously inoculated MSTO-211H cells were treated daily from day 19 to
23
24 day 30 with s.c. injection of Ki16425 at 20 mg/kg per day. The tumor growth
25
26 was measured every 3 days. Under these experimental conditions, treatment
27
28 with Ki16425 did not significantly inhibit the tumor growth of MSTO-211 cells
29
30 (data was not shown). However, we can not make conclusion by this
31
32 experiment, because Ki16425 is an inhibitor of LPA₁, but not LPA₂. In addition,
33
34 since limited amount of Ki16425 was available, only one dose of Ki16425 was
35
36 used and treatment was given only 12 days started at late stage. Therefore,
37
38 further experiments with higher doses of Ki16425 for longer duration or dual
39
40 inhibitors of LPA₁ and LPA₂, if available, are warranted to elucidate real role of
41
42 LPA receptors in mesothelioma cells *in vivo*.
43
44
45
46
47
48
49
50
51
52
53
54
55
56
57
58

59 In summary, we demonstrated that MPMs are heterogeneous in terms of the
60

1
2
3
4
5
6
7 response to LPA and the expression of LPA receptors. However, at least in
8
9
10 particular populations of MPM, LPA stimulated proliferation *via* LPA₁ through
11
12
13 MAPK and motility *via* LPA₂ through RhoA. These novel findings suggest that
14
15
16 LPA₁ and LPA₂ may be one of therapeutic targets for controlling the proliferation
17
18
19 and motility of MPM cells. As MPM develops into locally advanced disease,
20
21
22 novel strategies targeting both LPA₁ and LPA₂ might be beneficial for
23
24
25 suppressing the progression of MPM. Further *in vivo* experiments with dual
26
27
28 inhibitors of LPA₁ and LPA₂, are warranted.
29
30
31
32
33
34
35
36
37
38
39
40
41
42
43
44
45
46
47
48
49
50
51
52
53
54
55
56
57
58
59
60

Acknowledgements

This work was supported by Grants-in-Aid 17016051 for Cancer Research from the Ministry of Education, Science, Sports and Culture of Japan (S.Sone). We thank Dr Hironobu Hamada for the EHMES-1 and EHMES-10 cell lines and Dr Adi F. Gazdar for the NCI-290 and NCI-H513 cell lines.

For Review

References

1. Broaddus VC. Asbestos, the mesothelial cell and malignancy: a matter of life or death. *Am J Respir Cell Mol Biol* 1997; 17: 657-9.
2. Morinaga K, Kishimoto T, Sakatani M, Akira M, Yokoyama K, Sera Y. Asbestos-related lung cancer and mesothelioma in Japan. *Industrial Health* 2001; 39, 65-74.
3. Dufresne A, Bégin R, Churg A, Massé S. Mineral fiber content of lungs in patients with mesothelioma seeking compensation in Quebec. *Am J Respir Crit Care Med* 1996; 153: 711-8.
4. Carbone M, Kratzke RA, Testa JR. The pathogenesis of mesothelioma. *Semin Oncol* 2002; 29: 2-17.
5. Robinson BW, Lake RA. Advances in malignant mesothelioma. *N Engl J Med* 2005; 353: 1591-603.
6. Eichholtz T, Jalink K, Fahrenfort I, Moolenaar WH. The bioactive phospholipid lysophosphatidic acid is released from activated platelets. *Biochem J* 1993; 291: 677-80.

- 1
2
3
4
5
6
7 7. Gerrard JM, Robinson P. Identification of the molecular species of
8
9
10 lysophosphatidic acid produced when platelets are stimulated by thrombin.
11
12 *Biochim Biophys Acta* 1989; 1001: 282–5.
13
14
15
16 8. Shen Z, Belinson J, Morton RE, Xu Y, Xu Y. Phorbol 12-myristate
17
18 13-acetate stimulates lysophosphatidic acid secretion from ovarian and
19
20 cervical cancer cells but not from breast or leukemia cells. *Gynecol Oncol*
21
22 1998; 71: 364–8.
23
24
25
26
27
28 9. Aoki J, Taira A, Takanezawa Y, *et al.* Serum lysophosphatidic acid is
29
30 produced through diverse phospholipase pathways. *J Biol Chem* 2002; 277:
31
32 48737-44.
33
34
35
36
37
38 10. Siess W, Zangl KJ, Essler M, *et al.* Lysophosphatidic acid mediates the
39
40 rapid activation of platelets and endothelial cells by mildly oxidized low
41
42 density lipoprotein and accumulates in human atherosclerotic lesions. *Proc*
43
44 *Natl Acad Sci U S A* 1999; 96: 6931-6.
45
46
47
48
49
50 11. Fang X, Schummer M, Mao M, *et al.* Lysophosphatidic acid is a bioactive
51
52 mediator in ovarian cancer. *Biochim Biophys Acta* 2002; 1582: 257-264.
53
54
55
56 12. Mills GB, May C, Hill M, Campbell S, Shaw P, Marks A. ascitic fluid from
57
58 human ovarian cancer patients contains growth factors necessary for
59
60

1
2
3
4
5
6
7 intraperitoneal growth of human ovarian adenocarcinoma cells. *J Clin Invest*
8
9
10 1990; 86: 851-5.

11
12
13 13. Xu Y, Gaudette DC, Boynton JD, *et al.* Characterization of an ovarian cancer
14
15
16 activating factor in ascites from ovarian cancer patients. *Clin Cancer Res*
17
18
19 1995; 1: 1223-1232.

20
21
22 14. Contos JJ, Ishii I, Chun J. Lysophosphatidic acid receptors. *Mol Pharmacol*
23
24
25 2000; 58: 1188-96.

26
27
28 15. Noguchi K, Ishii S, Shimizu T. Identification of p2y9/GPR23 as a novel G
29
30
31 protein-coupled receptor for lysophosphatidic acid, structurally distant from
32
33
34 the Edg family. *J Biol Chem* 2003; 278: 25600-6.

35
36
37 16. Lee CW, Rivera R, Gardell S, Dubin AE, Chun J. GPR92 as a new G12/13-
38
39
40 and Gq-coupled lysophosphatidic acid receptor that increases cAMP, LPA5.
41
42
43
44 *J Biol Chem* 2006; 281: 23589-97.

45
46
47 17. An S, Bleu T, Hallmark OG, Goetzl EJ. Characterization of a novel subtype
48
49
50 of human G protein-coupled receptor for lysophosphatidic acid. *J Biol Chem*
51
52
53 1998; 273: 7906-10.

- 1
2
3
4
5
6
7 18. Bando K, Aoki J, Hosono H, *et al.* Molecular cloning and characterization of
8
9 a novel human G-protein-coupled receptor, EDG7, for lysophosphatidic acid.
10
11 J Biol Chem 1999; 274: 27776-85.
12
13
14
15
16 19. Kishi Y, Okudaira S, Tanaka M, *et al.* Autotaxin is overexpressed in
17
18 glioblastoma multiforme and contributes to cell motility of glioblastoma by
19
20 converting lysophosphatidylcholine to lysophosphatidic acid. J Biol Chem
21
22 2006; 281: 17492-500.
23
24
25
26
27
28 20. Shida D, Watanabe T, Aoki J, *et al.* Aberrant expression of lysophosphatidic
29
30 acid (LPA) receptors in human colorectal cancer. Lab Invest 2004; 84:
31
32 1352-62.
33
34
35
36
37 21. Schulte, KM, Beyer A, Köhrer K, Oberhäuser S, Röher HD.
38
39 Lysophosphatidic acid, a novel lipid growth factor for human thyroid cells:
40
41 over-expression of the high-affinity receptor edg4 in differentiated thyroid
42
43 cancer. Int J Cancer 2001; 92: 249-56.
44
45
46
47
48
49 22. Kitayama J, Shida D, Sako A, *et al.* Over-expression of lysophosphatidic
50
51 acid receptor-2 in human invasive ductal carcinoma. Breast Cancer Res
52
53 2004; 6: R640-R646.
54
55
56
57
58
59
60

- 1
2
3
4
5
6
7 23. Mills GB, Eder A, Fang X, *et al.* Critical role of lysophospholipids in the
8
9
10 pathophysiology, diagnosis, and management of ovarian cancer. *Cancer*
11
12
13 *Treat Res* 2002; 107: 259-83.
14
- 15
16 24. Shida D, Kitayama J, Yamaguchi H, *et al.* Dual mode regulation of migration
17
18
19 by lysophosphatidic acid in human gastric cancer cells. *Exp Cell Res* 2004;
20
21
22 301: 168-78.
23
- 24
25 25. Guo R, Kasbohm EA, Arora P, *et al.* Expression and function of
26
27
28 lysophosphatidic acid LPA1 receptor in prostate cancer cells. *Endocrinology*
29
30
31 2006; 147: 4883-92.
32
33
- 34 26. Boucharaba A, Serre CM, Guglielmi J, Bordet JC, Clezardin P, Peyruchaud
35
36
37 O. The type 1 lysophosphatidic acid receptor is a target for therapy in bone
38
39
40 metastases. *Proc Natl Acad Sci U S A* 2006; 103: 9643-8.
41
42
- 43 27. Goetzl EJ, Dolezalova H, Kong Y, *et al.* Distinctive expression and functions
44
45
46 of the type 4 endothelial differentiation gene-encoded G protein-coupled
47
48
49 receptor for lysophosphatidic acid in ovarian cancer. *Cancer Res* 1999; 59:
50
51
52 5370-5.
53
54
55
56
57
58
59
60

- 1
2
3
4
5
6
7 28. Shida D, Kitayama J, Yamaguchi H, *et al.* Lysophosphatidic Acid (LPA)
8
9
10 Enhances the Metastatic Potential of Human Colon Carcinoma DLD1 Cells
11
12 through LPA1. *Cancer Res* 2003; 63: 1706-11.
13
14
15
16 29. Yamada T, Sato K, Komachi M, *et al.* Lysophosphatidic acid (LPA) in
17
18 malignant ascites stimulates motility of human pancreatic cancer cells
19
20 through LPA1. *J Biol Chem* 2004; 279: 6595-605.
21
22
23
24
25 30. Yokoyama A, Kohno N, Fujino S, *et al.* Origin of heterogeneity of
26
27 interleukin-6 (IL-6) levels in malignant pleural effusions. *Oncol Rep* 1994; 1:
28
29 507-511.
30
31
32
33
34 31. Nakataki E, Yano S, Matsumori Y, *et al.* Novel orthotopic implantation model
35
36 of human malignant pleural mesothelioma (EHMES-10 cells) highly
37
38 expressing vascular endothelial growth factor and its receptor. *Cancer Sci*
39
40 2006; 97: 183-91.
41
42
43
44
45
46
47 32. Usami N, Fukui T, Kondo M, *et al.* Establishment and characterization of
48
49 four malignant pleural mesothelioma cell lines from Japanese patients.
50
51
52
53
54
55
56 33. Yano S, Muguruma H, Matsumori Y, *et al.* Antitumor Vascular Strategy for
57
58 Controlling Experimental Metastatic Spread of Human Small-Cell Lung
59
60

1
2
3
4
5
6
7 Cancer Cells with ZD6474 in Natural Killer Cell–Depleted Severe Combined
8
9
10 Immunodeficient Mice. *Clin Cancer Res* 2005; 11: 8789-98.

11
12
13 34. Ohta H, Sato K, Murata N, *et al.* Ki16425, a subtype-selective antagonist for
14
15
16 EDG-family lysophosphatidic acid receptors. *Mol Pharmacol* 2003; 64:
17
18
19 994-1005.

20
21
22 35. Lindholm PM, Salmenkivi K, Vauhkonen H, *et al.* Gene copy number
23
24
25 analysis in malignant pleural mesothelioma using oligonucleotide array CGH.
26
27
28 *Cytogenet Genome Res* 2007; 119: 46-52.

29
30
31 36. Harvey I. Pass, Zhandong Liu, Anil Wali, *et al.* Gene Expression Profiles
32
33
34 Predict Survival and Progression of Pleural Mesothelioma. *Clin Cancer Res*
35
36
37 2004; 10: 849-859.

38
39
40 37. Mills GB, Moolenaar WH. The emerging role of lysophosphatidic acid in
41
42
43 cancer. *Nat Rev Cancer* 2003; 3: 582-91.

44
45
46 38. Stähle M, Veit C, Bachfischer U, *et al.* Mechanisms in LPA-induced tumor
47
48
49 cell migration: critical role of phosphorylated ERK. *J Cell Sci.* 2003; 116:
50
51
52 3835-46.

- 1
2
3
4
5
6
7 39. Hama K, Aoki J, Fukaya M, *et al.* Lysophosphatidic acid and autotaxin
8
9
10 stimulate cell motility of neoplastic and non-neoplastic cells through LPA1. J
11
12 Biol Chem 2004; 279: 17634-9.
13
14
15
16 40. Do TV, Symowicz JC, Berman DM, *et al.* Lysophosphatidic Acid
17
18 Down-Regulates Stress Fibers and Up-Regulates Pro-Matrix
19
20 Metalloproteinase-2 Activation in Ovarian Cancer Cells. Mol Cancer Res
21
22 2007; 5: 121-31.
23
24
25
26
27
28 41. Michiels F, Habets GG, Stam JC, van der Kammen RA, Collard JG. A role
29
30 for Rac in Tiam1-induced membrane ruffling and invasion. Nature 1995;
31
32 375: 338-40.
33
34
35
36
37
38 42. Itoh K, Yoshioka K, Akedo H, Uehata M, Ishizaki T, Narumiya S. An
39
40 essential part for Rho-associated kinase in the transcellular invasion of
41
42 tumor cells. Nat Med 1999; 5: 221-5.
43
44
45
46
47
48
49
50
51
52
53
54
55
56
57
58
59
60

Figure legends

Figure 1. Expression of LPA receptors, LPA₁, LPA₂, LPA₃, LPA₄, and LPA₅ in human MPM cell lines, and clinical specimens.

Reverse transcription-PCR was performed to determine expression of the LPA receptors, LPA₁, LPA₂, LPA₃, LPA₄, and LPA₅. Reverse transcription-PCR products were electrophoresed on a 2% agarose gel and stained with ethidium bromide. Data shown are representative of three independent experiments with similar results.

Figure 2. Effects of LPA on cell proliferation of human MPM cells, and inhibition by antagonist and knockdown of LPA₁.

Tumor cells (5×10^3 per well) plated in triplicate in 96-well plates were incubated overnight in RPMI 1640 containing 10% FBS. The cells were starved for 24 h by replacing the media with serum-free RPMI 1640 containing 0.1% fatty acid-free bovine serum albumin. Different doses of LPA and Ki16425, an inhibitor of LPA₁, were then added, and the cells were cultured for 48 h. Then, an aliquot of 50 μ L of stock 3-(4,5-dimethylthiazol-2-yl)-2,5-diphenyltetrazolium bromide solution (2 mg/mL; Sigma, St. Louis, MO) was added to each plate and the cells were

1
2
3
4
5
6
7 incubated for 2 h at 37°C. LPA stimulated proliferation of 211H and H28 cells in
8
9
10 a dose-dependent manner (A). LPA-induced proliferation of 211H and H28 cells
11
12
13 was inhibited by Ki16425 in a dose-dependent manner (B). After transfection
14
15
16 with siRNA or scramble RNA (siSCR) using Lipofectamine 2000 in accordance
17
18
19 with the manufacturer's instructions, the cells were starved for 24 h by replacing
20
21
22 the media with serum-free RPMI 1640 containing 0.1% fatty acid-free BSA. LPA
23
24
25 (10 μ M) was then added and cells were cultured for 48 h. The cells were then
26
27
28 subjected to 3-(4,5-dimethylthiazol-2-yl)-2,5-diphenyltetrazolium bromide assay.
29
30
31 Knockdown of LPA₁ (siLPA1#1, siLPA1#2, and siLPA1#3) significantly inhibited
32
33
34 LPA-induced proliferation of 211H and H28 cells, while knockdown of LPA₂
35
36
37 (siLPA2#1, siLPA2#2, and siLPA2#3) had little impact on LPA-induced
38
39
40 proliferation of 211H or H28 cells (C). Data shown are representative of three
41
42
43 independent experiments with similar results. * Significantly different from
44
45
46 control ($P < 0.001$). ** Significantly different from siSCR ($P < 0.005$).
47
48
49
50
51
52

53 **Figure 3. Effects of LPA on phospho-p44/42 MAPK, and inhibition by**
54
55
56 **knockdown of LPA₁.**
57

58
59 Tumor cells were incubated with LPA (10 μ M) for 0, 2, and 6 h. Then, the cell
60

1
2
3
4
5
6
7 lysates were harvested and the protein level and phosphorylation of p44/42
8
9
10 MAPK were determined by immunoblotting analysis. LPA-induced
11
12 phosphorylation in 211H and H28 cells occurred after 2 h, and the effect was
13
14 still substantial after 6 h (A). Moreover, knockdown of LPA₁ with siRNA
15
16 markedly reduced the activation of p44/42 MAPK. However, knockdown of LPA₂
17
18 had little impact (B). Data shown are representative of three independent
19
20 experiments with similar results.
21
22
23
24
25
26
27
28
29
30

31 **Figure 4. Effects of LPA on migration of human MPM cells, and inhibition**
32 **by knockdown of LPA₂.**
33
34
35

36
37 Cell migration was measured in Falcon Cell Culture Inserts (pore size 8 μm).
38
39 Cells suspended in serum-free RPMI 1640 containing 0.1% fatty acid-free BSA
40
41 with or without LPA and/or Ki16425 were added to the upper chamber (1×10⁵
42
43 cells at 100 μl/well). Serum-free RPMI 1640 containing 0.1% fatty acid-free BSA
44
45 and human fibronectin (5 μg/ml) as a chemoattractant was added to the lower
46
47 chamber. When the cells treated with Ki16425, the cells were preincubated with
48
49 10 μM Ki16425 for 30 min. The cells were allowed to migrate for 3 h at 37°C.
50
51
52
53
54
55
56
57
58
59
60 LPA stimulated migration of MPM cells, H2052, H2373, and ACC-MESO-4 in a

1
2
3
4
5
6
7 dose-dependent manner (A). Ki16425 had no effect on LPA-induced motility in
8
9
10 these MPM cells (B). After transfection with siRNA or scramble RNA (siSCR),
11
12
13 the cells were starved for 24 h by replacing the media with serum-free RPMI
14
15
16 1640 containing 0.1% fatty acid-free BSA. Knockdown of LPA₂ by siRNA
17
18
19 significantly inhibited the LPA-induced motility of H2052 cells, while knockdown
20
21
22 of LPA₁ did not (C). Data shown are representative of three independent
23
24
25 experiments. * Significantly different from control ($P<0.005$). ** Significantly
26
27
28 different from siSCR ($P<0.005$).
29
30
31
32
33

34 **Figure 5. Effects of LPA on RhoA activity, and inhibition by knockdown of**
35
36
37 **LPA₂.**

38
39
40 To assess RhoA activation, we determined RhoA activation as the amount of
41
42
43 RhoA-GTP binding using a G-LISA RhoATM Activation Assay Biochem KitTM
44
45
46 (Cytoskeleton, Denver, CO) in accordance with the manufacturer's
47
48
49 recommendations. H2052 cells were treated with LPA (10 μ M) for 0, 1, 3, 6, 12,
50
51
52 and 30 min, and the cell lysates were then prepared for the assay. LPA
53
54
55 stimulation of RhoA activity in H2052 cell was highest after 1 min and the effect
56
57
58 decreased within 30 min (A). Knockdown of LPA₂ with siRNA significantly
59
60

1
2
3
4
5
6
7 reduced the activation of RhoA, while knockdown of LPA₁ had little effect (B).
8

9
10 Data shown are representative of three independent experiments. * Significantly
11
12 different from control ($P<0.05$). ** Significantly different from siSCR ($P<0.005$).
13
14
15
16
17
18
19
20
21
22
23
24
25
26
27
28
29
30
31
32
33
34
35
36
37
38
39
40
41
42
43
44
45
46
47
48
49
50
51
52
53
54
55
56
57
58
59
60

For Review

Figure 1.

Tadaaki Yamada et.al

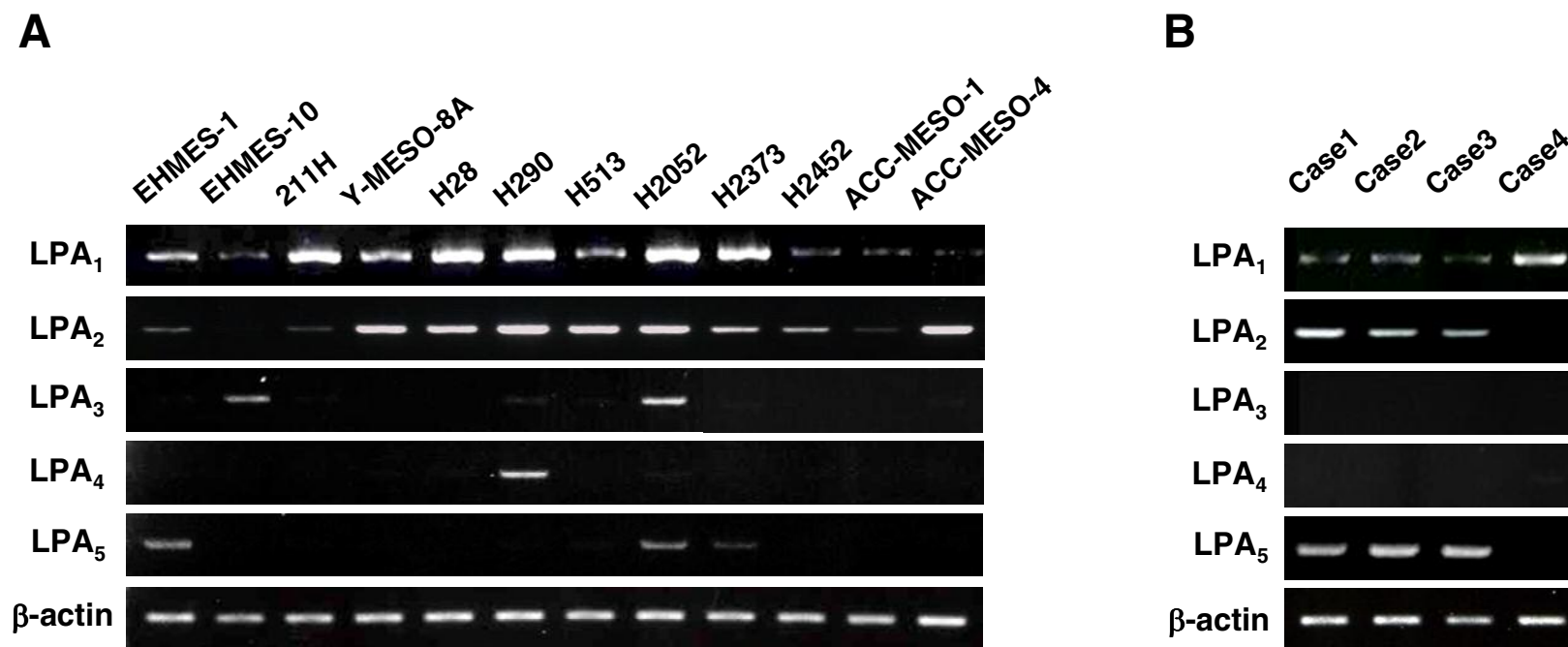


Figure 2.

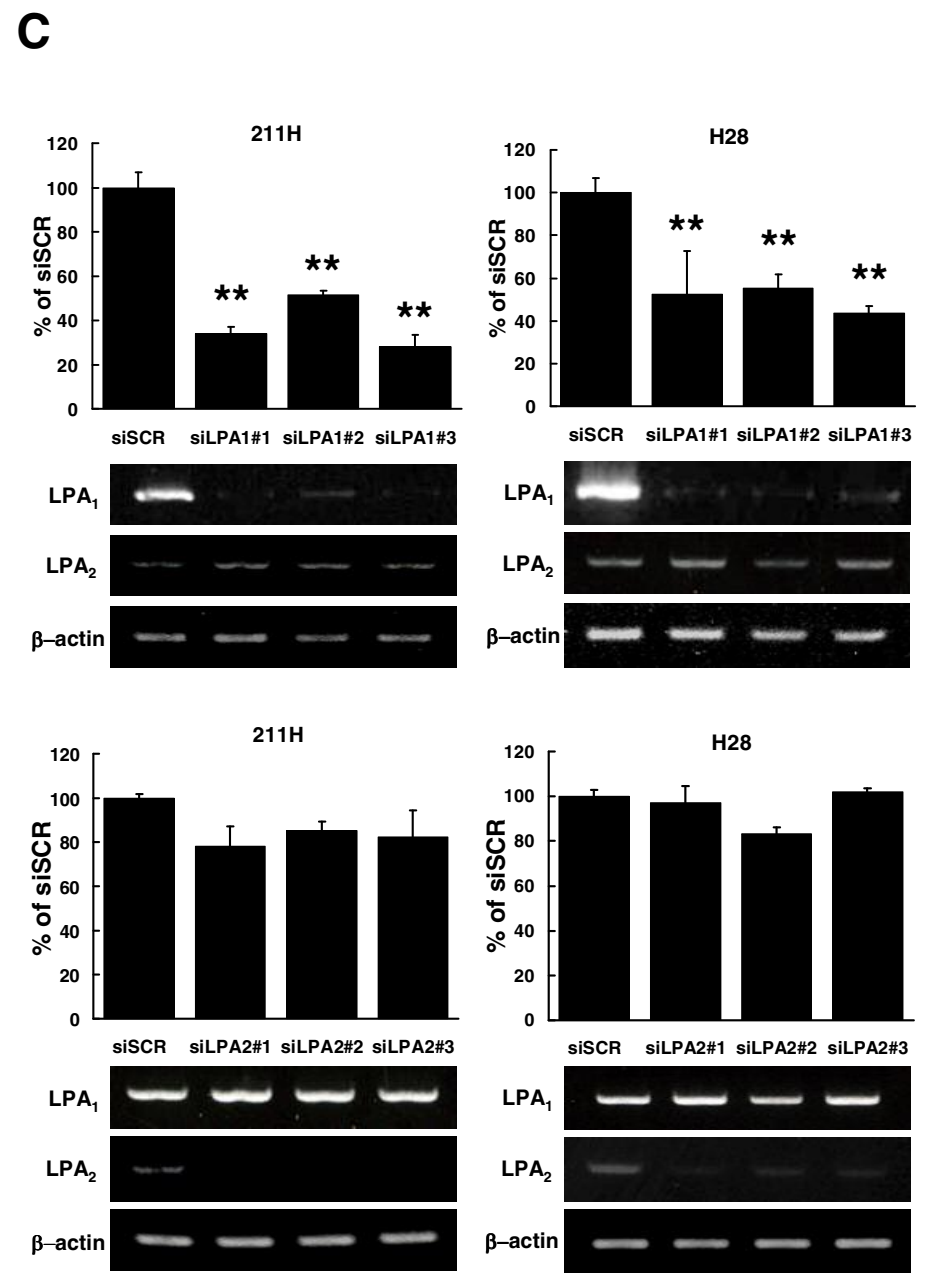
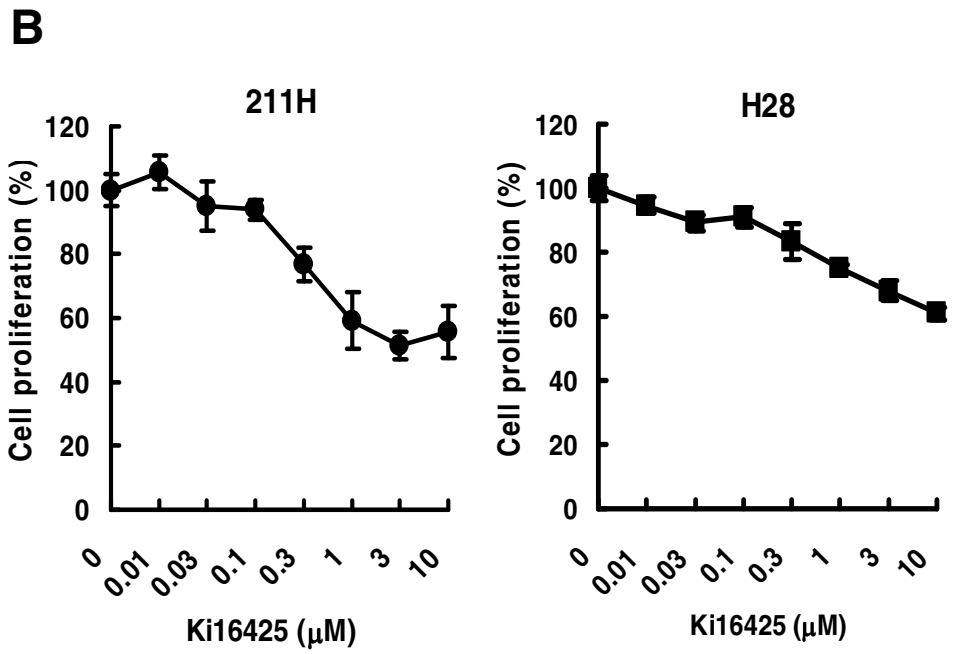
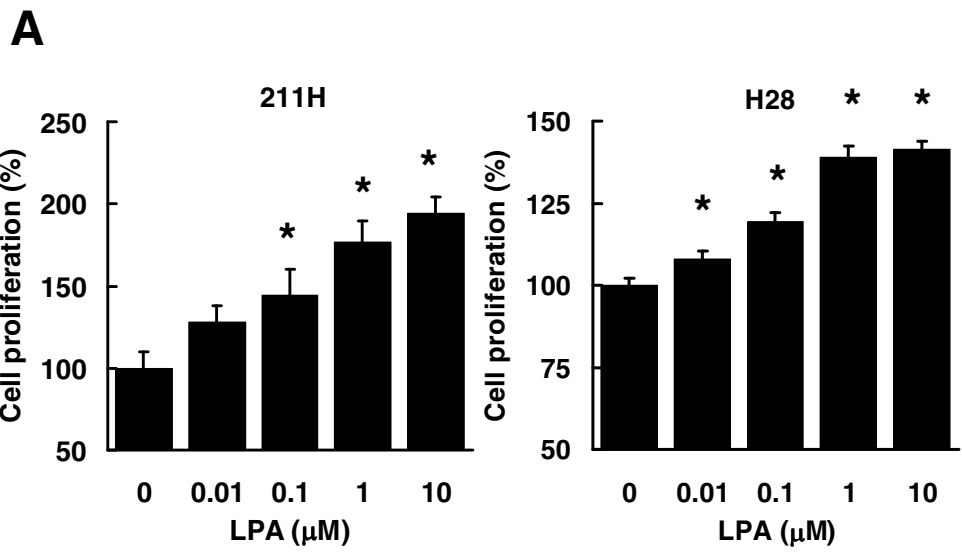


Figure 3.

Tadaaki Yamada et.al

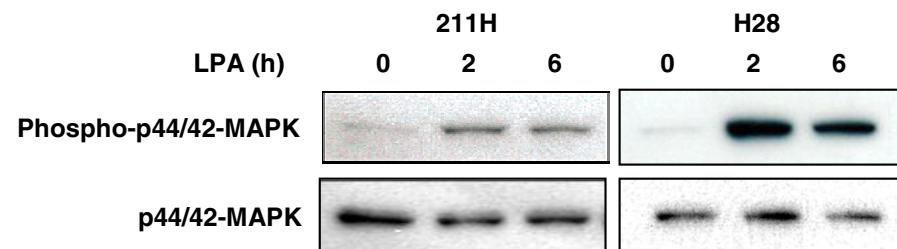
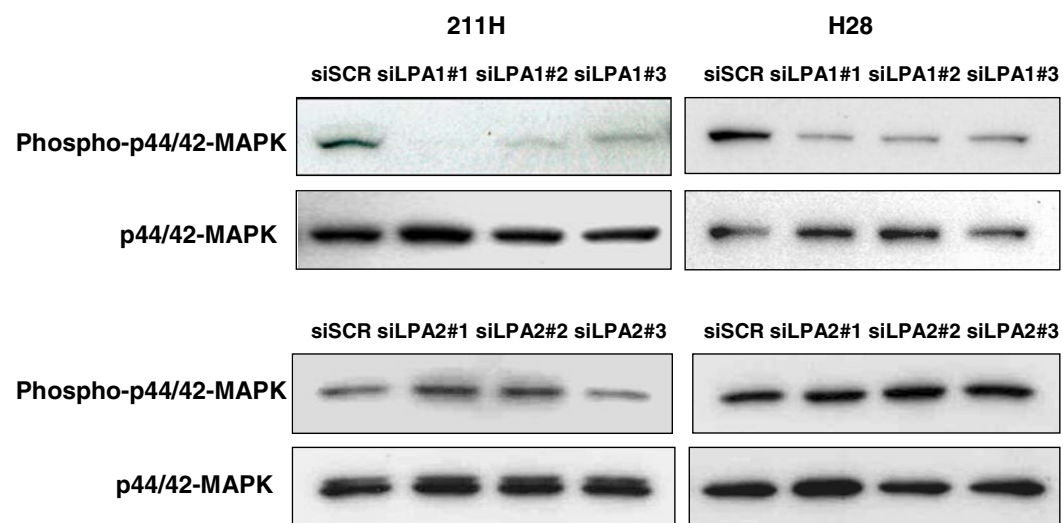
A**B**

Figure 4.

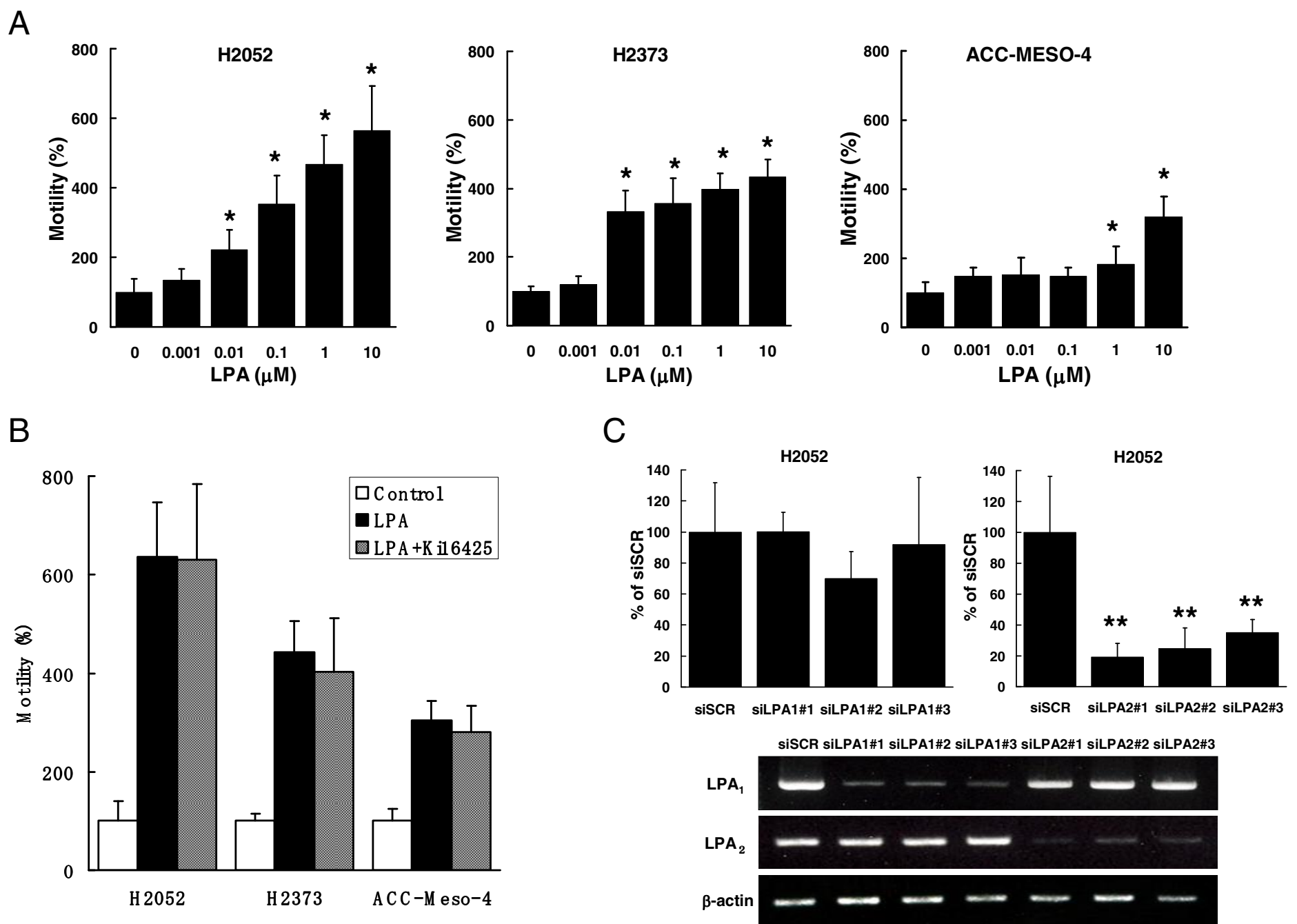
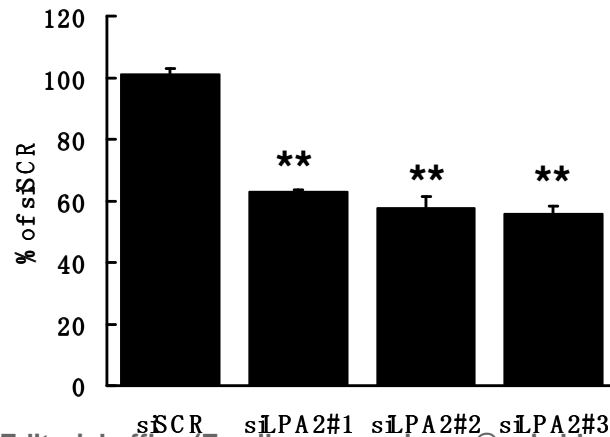
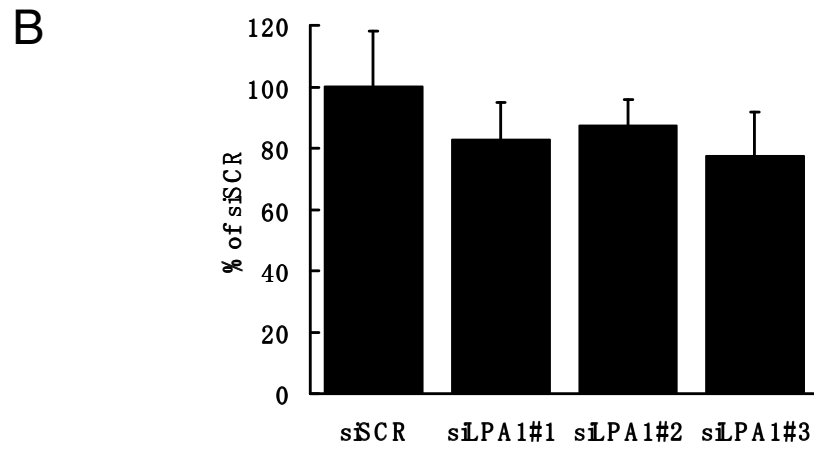
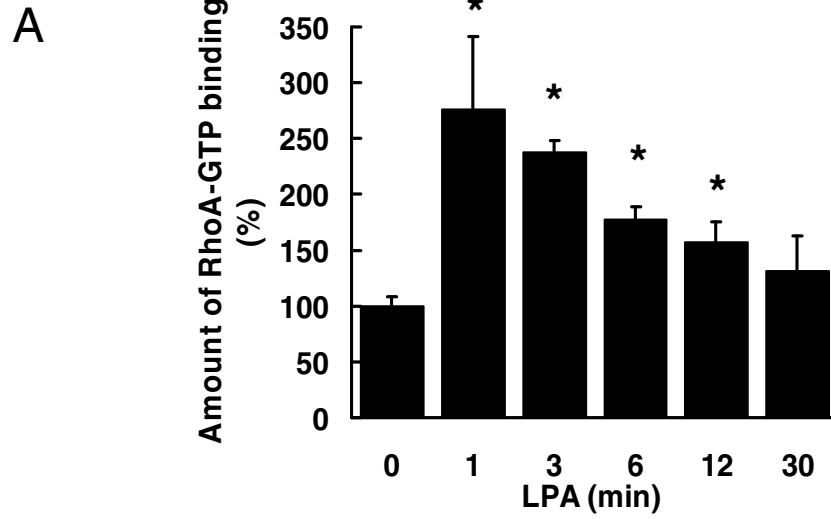


Figure 5.

Tadaaki Yamada et.al



1
2
3
4
5
6
7
8
9
10
11
12
13
14
15
16
17
18
19
20
21
22
23
24
25
26
27
28
29
30
31
32
33
34
35
36
37
38
39
40
41
42
43
44
45
46
47
48
49