

Calculation of diffusion coefficient for supercritical carbon dioxide and carbon dioxide+naphthalene system by molecular dynamics simulation using EPM2 model

メタデータ	言語: eng 出版者: 公開日: 2017-10-03 キーワード (Ja): キーワード (En): 作成者: メールアドレス: 所属:
URL	http://hdl.handle.net/2297/25904

A revised manuscript submitted to Molecular Simulation (GMOS-2009-0198)

**Calculation of Diffusion Coefficient for Supercritical Carbon Dioxide and
Carbon Dioxide + Naphthalene System by Molecular Dynamics Simulation
Applied EPM2 Model**

Hidenori Higashi* and Kazuhiro Tamura

School of Natural System, College of Science and Engineering, Kanazawa University

*Email: hhigashi@mail.kanazawa-u.ac.jp

* Corresponding author

E-mail : hhigashi@mail.kanazawa-u.ac.jp

Tel : +81-76-264-6260, Fax : +81-76-234-4829

Text p.1-11

Table 1-2

Figure 1-8

Abstract

NVT ensemble molecular dynamics (MD) simulation has been applied to calculate the self-diffusion coefficients of carbon dioxide and the tracer diffusion coefficients of naphthalene in supercritical carbon dioxide. The simulation was carried out in the pressure range from 8 to 40 MPa. The Elementary Physical Model proposed by Harris and Yung was adopted for carbon dioxide and some approximation models were used for naphthalene. The systems of MD simulation for carbon dioxide consist of 256 particles. One naphthalene molecule was added for carbon dioxide + naphthalene system. The system can be assumed to be infinite dilution condition for carbon dioxide + naphthalene system and the mutual diffusion coefficients are equal to the tracer diffusion coefficients of naphthalene. The self-diffusion coefficients of carbon dioxide and the tracer diffusion coefficients of naphthalene in supercritical carbon dioxide can be calculated by mean square displacement. The calculated results of diffusion coefficients showed good agreement with the experimental data without adjustable parameters.

Keywords: Diffusion coefficient, Molecular dynamics simulation, Supercritical carbon dioxide.

INTRODUCTION

One of important physical properties necessary to the design of supercritical extractor, separator and reactor is the diffusion coefficients of solutes in supercritical fluids. However, measurement of diffusion coefficients under the supercritical conditions is difficult so that the diffusion coefficient data in the supercritical region are quite limited. Computer simulation would be feasible and helpful to obtain thermodynamic data for mixtures under high pressure.

In previous works [1-3], the authors have applied single site model molecular dynamics (MD) simulation to calculate the tracer diffusion coefficients of aromatic compounds, such as naphthalene and dimethylnaphthalene isomers, in supercritical carbon dioxide under the infinite dilution condition. The calculated results showed fairly good correlation. However, the calculated diffusivities were smaller than the experimental results, as increasing the molecular weight. As a result, the assumption of sphere, such as single site model, is not suitable for the complicated compounds. More accurate models for complicated compounds are necessary to represent the diffusion coefficients of solute in supercritical fluid. In a previous work [4], the tracer diffusion coefficients of naphthalene and dimethylnaphthalene isomers in supercritical carbon dioxide were calculated by the MD simulation and the influence of molecular models on diffusion coefficients was discussed. The simulations by the united atom model and those by the all atom model for naphthalene and dimethylnaphthalene isomers are carried out and the calculated results of diffusion coefficients show good agreement with the experimental data.

In this work, as an extension, the MD simulation applied the Elementary Physical Model (EPM2) potential [5] for carbon dioxide was performed and the self-diffusion coefficients of carbon dioxide and the tracer diffusion coefficients of naphthalene in supercritical carbon dioxide were calculated.

SIMULATION METHODS

Models and potential functions

1. Carbon dioxide

Carbon dioxide was treated as rigid and flexible model of Elementary Physical Model (EPM2). The Lennard-Jones (12-6) potential function with electrical term was used for all sites in the simulation,

$$U_{\text{nonbond}}(r_{ij}) = 4\varepsilon_{ij} \left[\left(\frac{\sigma}{r_{ij}} \right)^{12} - \left(\frac{\sigma}{r_{ij}} \right)^6 \right] + \frac{1}{4\pi\varepsilon} \frac{q_i q_j}{r_{ij}} \quad (1)$$

where ε_{ij} is the energy parameter, σ the size parameter, r_{ij} the distance, q the charge, ε the relative dielectric constant, and i and j denote the sites i and j , respectively. The Ewald sum method was used to calculate the electrical interaction.

The angle potential shown in eq.(2) was used for the flexible model,

$$U_{\text{angle}}(\theta) = k \{1 - \cos(\theta - \theta_0)\} \quad (2)$$

2. Naphthalene

Naphthalene was treated as a single site model, rigid models of multi sites (united atom models) and a rigid model of all atoms (all atom model). The potential functions for naphthalene were same as for carbon dioxide. The each models were shown in Figure 1.

Parameters

1. Carbon dioxide

The potential parameters of EPM2 for carbon dioxide were referred from the model proposed by Harris and Yung [5]. These parameters were determined by the critical locus of pure carbon dioxide. The angle potential for the flexible model was determined by adjusting to the *PVT* relationship of carbon dioxide in this work. The parameters of carbon dioxide used in the present study are listed in Table 1.

2. Naphthalene

The energy and size parameters of naphthalene for single site model were determined by the critical temperature and pressure as the same procedure reported by the previous works [1]. The parameters for other models were referred from literatures [4, 6, 7]. The parameters of solute used in the present study are listed in Table 2. The interaction parameters between unlike molecules were calculated by the Lorentz-Berthelot rule.

Simulation conditions and analysis

1. Pure carbon dioxide system

Fujitsu Materials Explorer V3.0 and COGNAC 6.0.4 in OCTA2007 [8] were used to simulate the rigid model and flexible model, respectively. *NVT* ensemble MD simulation was applied in this work. The simulations were performed at 308.2 and 323.2 K. The time step of the calculations was set to 1 fs. The time step, 1 fs, was short enough to prevent from particle overlapping also for the model. After more than 2×10^4 equilibration steps (20ps), 2×10^6 production steps (2ns) was performed. The system consists with 256 molecules. The cut-off length was set to be the half-cell. The diffusion coefficients were calculated by mean square displacement (MSD) of the center of mass for carbon dioxide by using the Einstein relationship,

$$D_{11} = \lim_{t \rightarrow \infty} \frac{1}{6t} \langle [\mathbf{r}_1(t) - \mathbf{r}_1(0)]^2 \rangle \quad (3)$$

where \mathbf{r} is the position of molecules and t is the time. The diffusion coefficients could be calculated by the slope of MSD.

2. Carbon dioxide + naphthalene system

COGNAC 6.0.4 in OCTA2007 was used for the simulation. *NVT* ensemble MD simulation was also applied for this system. The simulations were performed at 308.2K. The time step of the calculations was set to 1 fs. The SHAKE algorithm was used to keep the shape of molecules. One naphthalene molecule was added in the 256 carbon dioxide system. The systems are assumed to be at the infinite dilution condition of naphthalene and the cut-off length was set to be the half-cell. The calculated diffusion coefficients are considered to correspond to the infinite dilution diffusion coefficients of naphthalene in supercritical carbon dioxide. The diffusion coefficients were calculated by MSD of the center of mass for naphthalene.

RESULTS AND DISCUSSION

1. Carbon dioxide system

The calculated result of *PVT* relationship at 308.2 K and 323.2 K was shown in Figure 2. The calculated results of MD simulation by rigid and flexible models are in good agreement with the EOS calculation. The simulated results with 80 % confidence interval for self-diffusion coefficients of carbon dioxide as a function of molar volume were shown in Figures 3 and 4. The simulated results by single site model of carbon dioxide [1] are also plotted in the figures. The calculated results by the MD simulation of this work show well agreement with the experimental data under the wide range of density.

2. Carbon dioxide + naphthalene system

The calculated results of diffusion coefficients for naphthalene in supercritical carbon dioxide by each models were shown in Figures 5 to 8. The experimental results and the simulated results by the single site model of carbon dioxide were cited from the previous work [1]. Although the adjustable parameters determined by the solubility data were used for the simulations by the single site atom models in the previous work [1], no adjustable parameter were adopted in the simulations of this work. The simulated results of naphthalene by the single site model and the all atom model are slightly smaller than those of the united atom models (two site model and ten site model). The estimated molecular size for the single site model will be larger than the real molecular size. The Lennard-Jones parameters for the all atom model were determined except the electric interaction and the parameters for the united atom models were determined by containing the electric interaction. Although the difference among the diffusion coefficients of naphthalene calculated by the MD in the present study was not remarkable for each models, the united atom models are well applicable to estimate the diffusion coefficient of naphthalene in supercritical carbon dioxide.

Since the deviation of calculated diffusion coefficients by single site model is large in the range of high pressure, the size parameter of naphthalene for single site model was adjusted to the diffusion coefficient. The size parameters between carbon and naphthalene and between oxygen and naphthalene were set to 0.9 times as long as the original values. The calculated results are also shown in Figure 5. The calculated results of diffusion coefficients at high pressure region improve by using the adjusted size parameters. However, the results over 50 MPa did not improve. It is difficult to represent the diffusion coefficients under wide pressure range by the single site model of solute.

CONCLUSION

The MD simulations applied the EPM2 model of carbon dioxide were performed to calculate the self-diffusion coefficients of carbon dioxide and the tracer diffusion coefficients of naphthalene in supercritical carbon dioxide. Some approximation models were used for naphthalene. The calculated results of diffusion coefficients were compared with the experimental results. The calculated results show the united atom models are well applicable to estimate the diffusion coefficient of naphthalene in supercritical carbon dioxide. The calculated results of diffusion coefficient at high pressure by single site model for naphthalene improve by adjusting the size parameters.

ACKNOWLEDGMENT

The author gratefully acknowledge the financial support provided by Grant-in-Aid for Young Scientists (A) (20686052), The Ministry of Education, Culture, Sports, Science and Technology.

LIST OF SYMBOLS

D	diffusion coefficient, $\text{m}^2 \text{s}^{-1}$
k	angle potential parameter, -
k_B	Boltzman constant (1.38×10^{-23}), J K^{-1}
P	pressure, Pa
q	charge, $ e $
r_{ij}	distance, m
\mathbf{r}	position of molecule, m
t	time, s
U_{angle}	angle potential function, J mol^{-1}

U_{nonbond} non bond (van der Waals) interaction potential, J mol⁻¹
 v molar volume, m³ mol⁻¹

Greek Letter

ε relative dielectric constant, -
 ε_{ij} energy parameter, J
 σ size parameter, m
 π circle ratio, -
 θ angle, degree
 ρ molar density, mol m⁻³

Subscripts

i, j sites i and j
1 carbon dioxide

REFERENCES

- [1] Y. Iwai, H. Higashi, H. Uchida, Y. Arai, "Molecular dynamics simulation of diffusion coefficients of naphthalene and 2-naphthol in supercritical carbon dioxide", *Fluid Phase Equilibria*, **127** (1997) 251-261.
- [2] H. Higashi, Y. Iwai, H. Uchida, Y. Arai, "Diffusion coefficients of aromatic compounds in supercritical carbon dioxide using molecular dynamics simulation", *J. Supercritical Fluids*, **13** (1998) 93-97.
- [3] H. Higashi, Y. Iwai, Y. Arai, "Calculation of self-diffusion and tracer diffusion coefficients near the critical point of carbon dioxide using molecular dynamics simulation", *Ind. Eng. Chem. Res.*, **39** (2000) 4567-4570.

- [4] H. Higashi, Y. Iwai, Y. Arai, "Comparison of molecular models used in molecular dynamics simulation for tracer diffusion coefficients of naphthalene and dimethylnaphthalene isomers in supercritical carbon dioxide", *Fluid Phase Equilibria*, **234** (2005) 51-55.
- [5] J. G. Harris, K. W. Yung, "Carbon dioxide's liquid-vapor coexistence curve and critical properties as predicted by a simple molecular model", *J. Phys. Chem.*, **99** (1995) 12021-12024.
- [6] M. G. Abunbay, J. Perez-Pellitero, R. O. Contreras-Camacho, J.-M. Teuler, P. Ungerer, A. D. Mackie, V. Lachet, "Optimized intermolecular potential for aromatic hydrocarbons based on anisotropic united atoms. III. Polyaromatic and naphthenoaromatic Hydrocarbons", *J. Phys. Chem.*, **109** (2005) 2970-2976.
- [7] A. K. Rappe, C. J. Casewit, K. S. Colwell, W. A. Goddard III, W. M. Skiff, "UFF, a full periodic table force field for molecular mechanics and molecular dynamics simulation", *J. Am. Chem. Soc.*, **114** (1992) 10024-10035.
- [8] <http://www.octa.jp/>
- [9] R. Span, W. Wagner, "A new equation of state for carbon dioxide covering the fluid region from the triple-point temperature to 1100 K at pressures up to 800 MPa", *J. Phys. Chem. Ref. Data*, **25** (1996) 1509-1596.
- [10] J. H. A. O'hern, J. J. Martin. "Diffusion in carbon dioxide at elevated pressures", *Ind. Eng. Chem.*, **47** (1955) 2081-2086.
- [11] P. Etesse, J. A. Zega, R. Kobayashi, A. Akgerman, "High pressure nuclear magnetic resonance measurement of spin-lattice relaxation and self-diffusion in carbon dioxide", *J. Chem. Phys.*, **97** (1992) 2022-2029.
- [12] S. Takahashi, H. Iwasaki, "The diffusion of gases at high pressures. I. The self-diffusion coefficient of carbon dioxide", *Bull. Chem. Soc. Japan*, **39** (1966) 2105-2109.

- [13] M. B. Iomtev, Y. V. Tsekhanskaya, "Diffusion of naphthalene in compressed ethylene and carbon dioxide", *Russ. J. Phys. Chem.*, **38** (1964) 485-487.
- [14] G. Knaff, E. U. Schlüder, "Diffusion coefficients of naphthalene and caffeine in supercritical carbon dioxide", *Chem. Eng. Process*, **21** (1987) 101-105.
- [15] D. M. Lamb, S. T. Adamy, K. W. Woo, J. Jonas, "Transport and relaxation of naphthalene in supercritical fluids", *J. Phys. Chem.*, **93** (1989) 5002-5005.
- [16] A. Akgerman, C. Erkey, M. Orejuela, "Limiting diffusion coefficients of heavy molecular weight organic contaminants in supercritical carbon dioxide", *Ind. Eng. Chem. Res.*, **35** (1996) 911-917.
- [17] H. Higashi, Y. Iwai, Y. Nakamura, S. Yamamoto, Y. Arai, "Correlation of diffusion coefficients for naphthalene and dimethylnaphthalene isomers in supercritical carbon dioxide", *Fluid Phase Equilibria*, **166** (1999) 101-110.

Figure Captions

Figure 1: Schematic images of naphthalene molecule.

Figure 2: *PVT* relationship of pure carbon dioxide

(—) calculated by EOS

(●) simulated by rigid model, (○) simulated by flexible model.

Figure 3: Self-diffusion coefficients of carbon dioxide at 308.2 K.

(●) Experimental data [10]

(□) simulated by rigid model, (○) simulated by flexible model

(×) simulated by single site model [1].

Figure 4: Self-diffusion coefficients of carbon dioxide at 323.2 K.

(●, ■) Experimental data [11, 12]

(□) simulated by rigid model, (○) simulated by flexible model

(×) simulated by single site model [1].

Figure 5: Diffusion coefficients of naphthalene in supercritical carbon dioxide at 308.2 K (Single site model of naphthalene).

(○, △, □, ▽, ◇) Experimental data [13-17]

(●) simulated by single site model of naphthalene (original size parameters)

(⊙) simulated by single site model of naphthalene (adjusted size parameters)

(×) simulated by single site model for all components [1].

Figure 6: Diffusion coefficients of naphthalene in supercritical carbon dioxide at 308.2 K (Two site model of naphthalene).

(○, △, □, ▽, ◇) Experimental data [13-17]

(▲) simulated by two site model of naphthalene

(×) simulated by single site model for all components [1].

Figure 7: Diffusion coefficients of naphthalene in supercritical carbon dioxide at 308.2 K (Ten site model of naphthalene).

(○, △, □, ▽, ◇) Experimental data [13-17]

(■) simulated by ten site model of naphthalene

(×) simulated by single site model for all components [1].

Figure 8: Diffusion coefficients of naphthalene in supercritical carbon dioxide at 308.2 K (All atom model of naphthalene).

(○, △, □, ▽, ◇) Experimental data [13-17]

(▼) simulated by all atom model of naphthalene

(×) simulated by single site model for all components [1].

Table 1: EPM2 potential parameters of carbon dioxide [5]

Atom	σ	ϵ/k_B	Q	k	θ
Site	[nm]	[K]	[e]	[kJ/mol]	[deg]
nonbond					
C	0.2757	28.129	-0.3256		
O	0.3033	80.507	+0.6512		
angle * ¹					
O=C=O				50	0 * ²

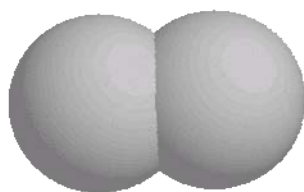
C=O bond length, $l=0.1149$ nm

*¹ angle potential was used by flexible model and k was adjusted to PVT relationship

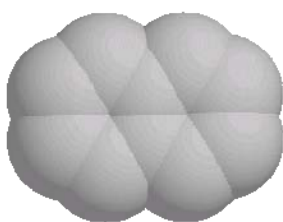
*² The angle was defined by external angle in OCTA

Table 2: Potential parameters of naphthalene.

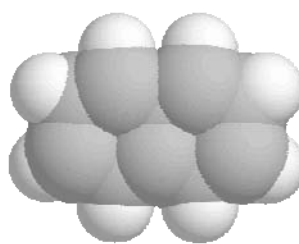
	σ	ε / k_B
Atom or Site	[nm]	[K]
<hr/>		
Single site [1]		
Naphthalene	0.6547	554.4
Two site [4]		
Benzene ring	0.4480	322.4
Ten site [6]		
CH	0.3246	89.42
C	0.3246	37.72
All atom [7]		
C	0.3430	52.9
H	0.2570	22.2



Two site model



Ten site model



All atom model

Figure 1: Schematic images of naphthalene molecule.

Higashi et al.

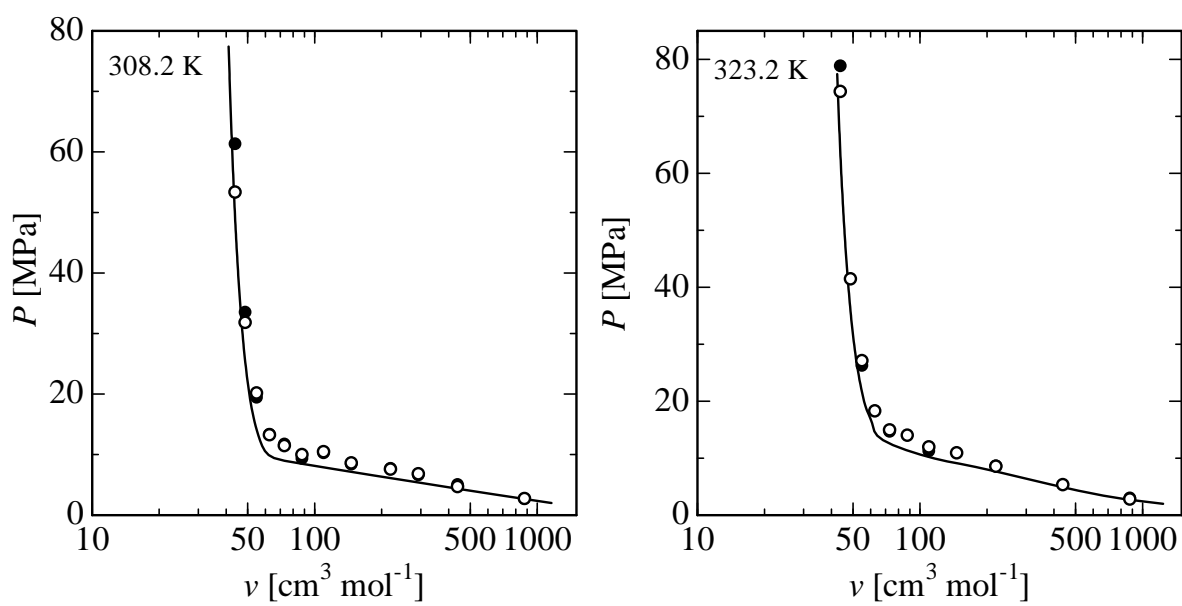


Figure 2: PVT relationship of pure carbon dioxide.

Figure 2 Higashi et al.

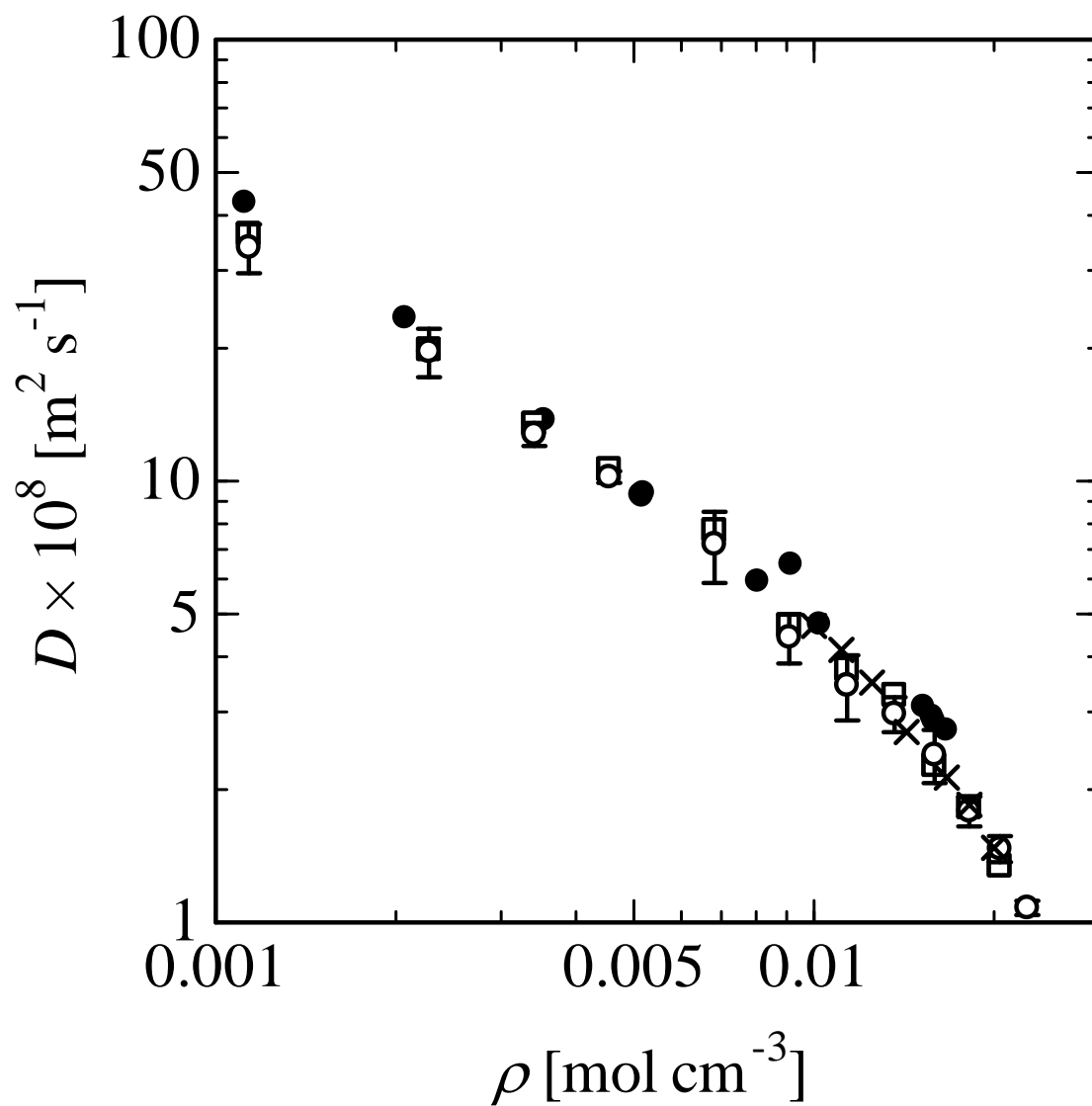


Figure 3: Self-diffusion coefficients of carbon dioxide at 308.2 K.

Figure 3 Higashi et al.

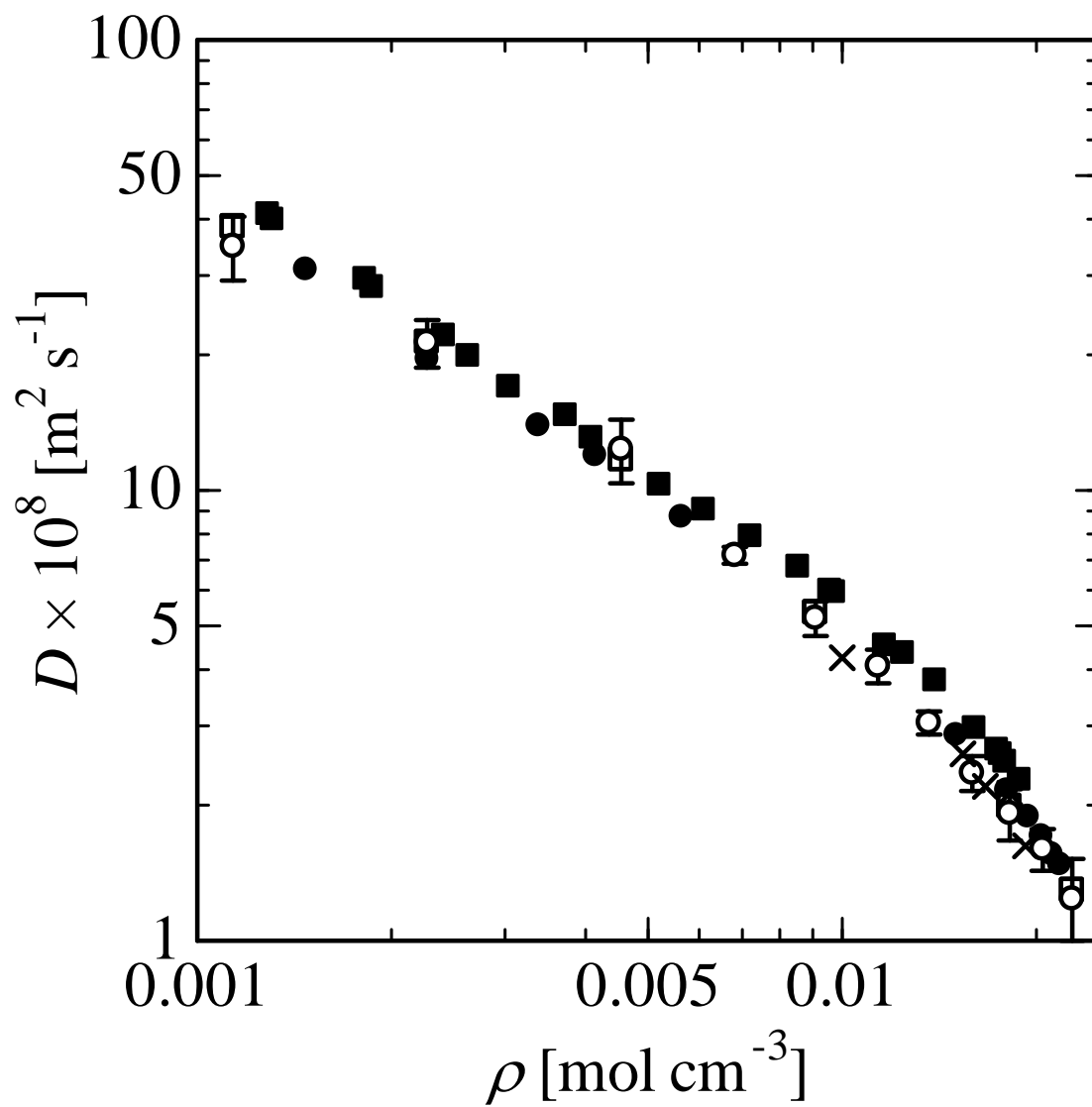


Figure 4: Self-diffusion coefficients of carbon dioxide at 323.2 K.

Figure 4 Higashi et al.

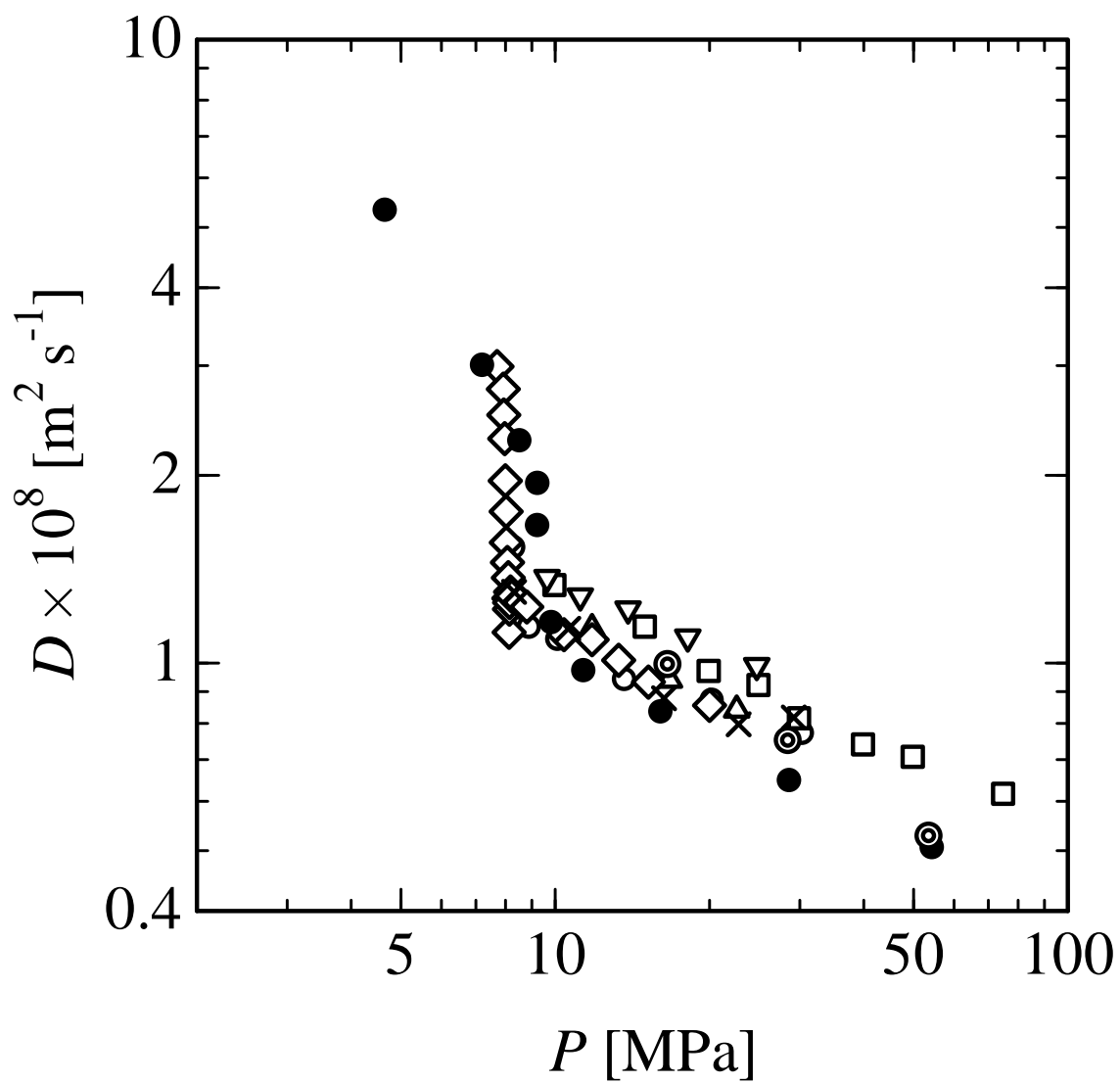


Figure 5: Diffusion coefficients of naphthalene in supercritical carbon dioxide at 308.2 K (Single site model of naphthalene).

Figure 5 Higashi et al.

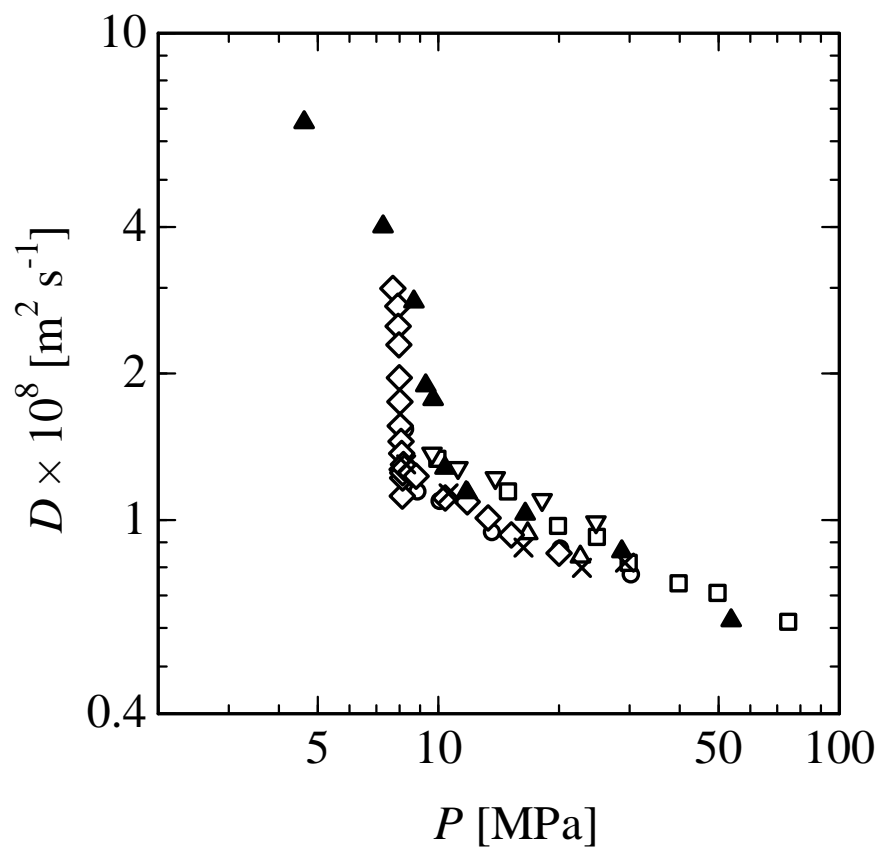


Figure 6: Diffusion coefficients of naphthalene in supercritical carbon dioxide at 308.2 K (Two site model of naphthalene).

Figure 6 Higashi et al.

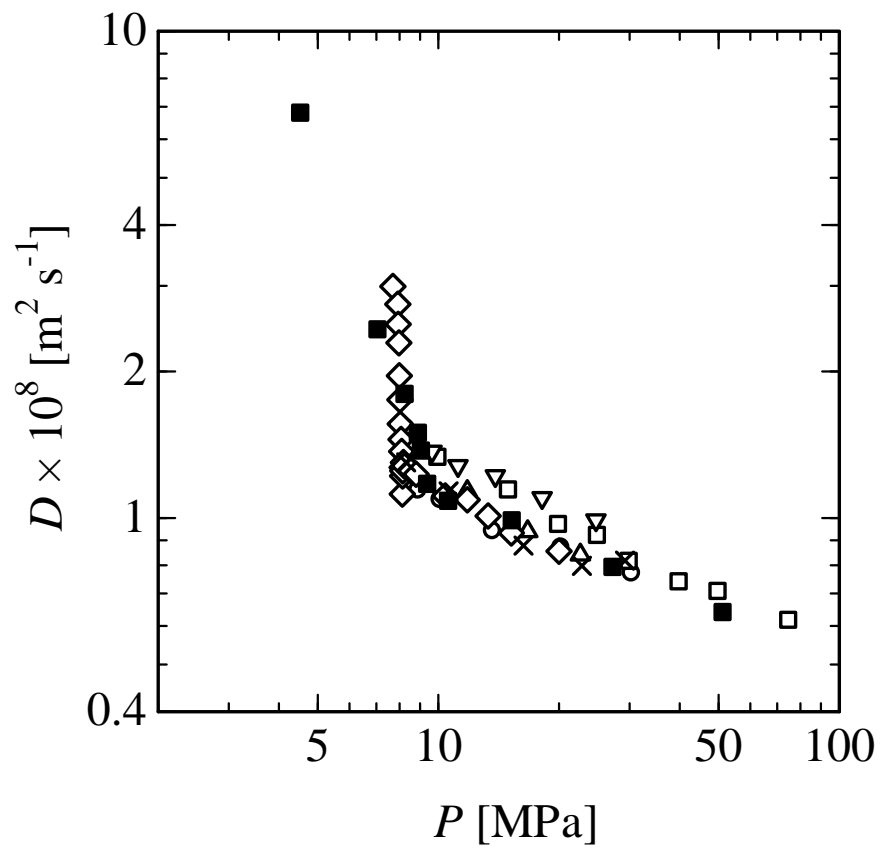


Figure 7: Diffusion coefficients of naphthalene in supercritical carbon dioxide at 308.2 K (Ten site model of naphthalene).

Figure 7 Higashi et al.

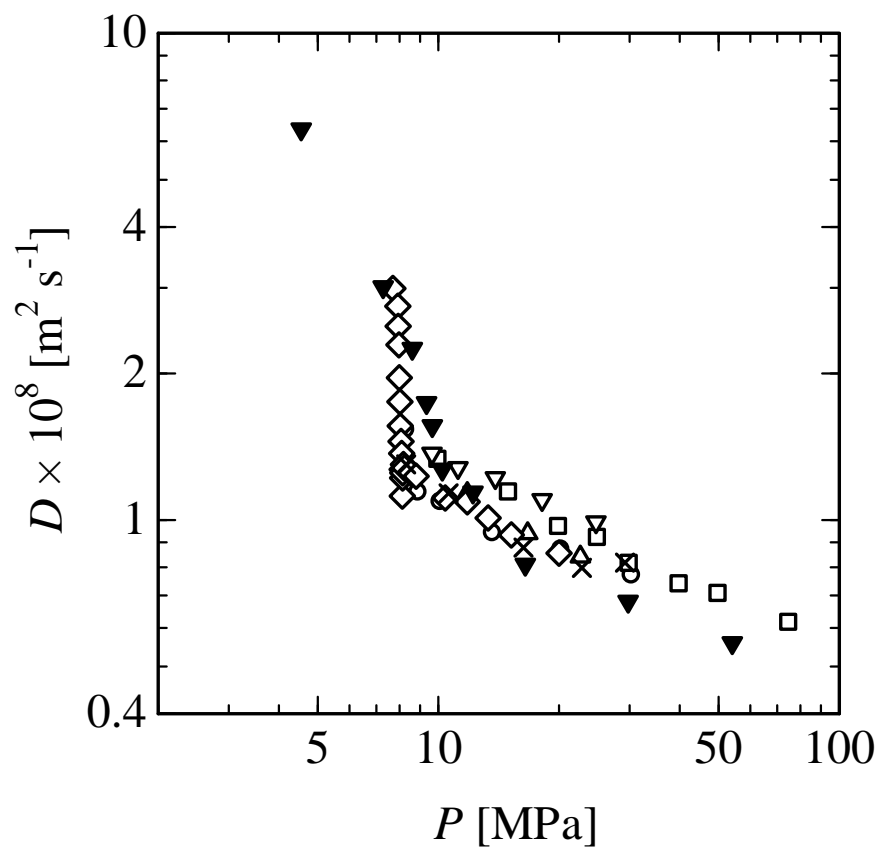


Figure 8: Diffusion coefficients of naphthalene in supercritical carbon dioxide at 308.2 K (All atom model of naphthalene).

Figure 8 Higashi et al.