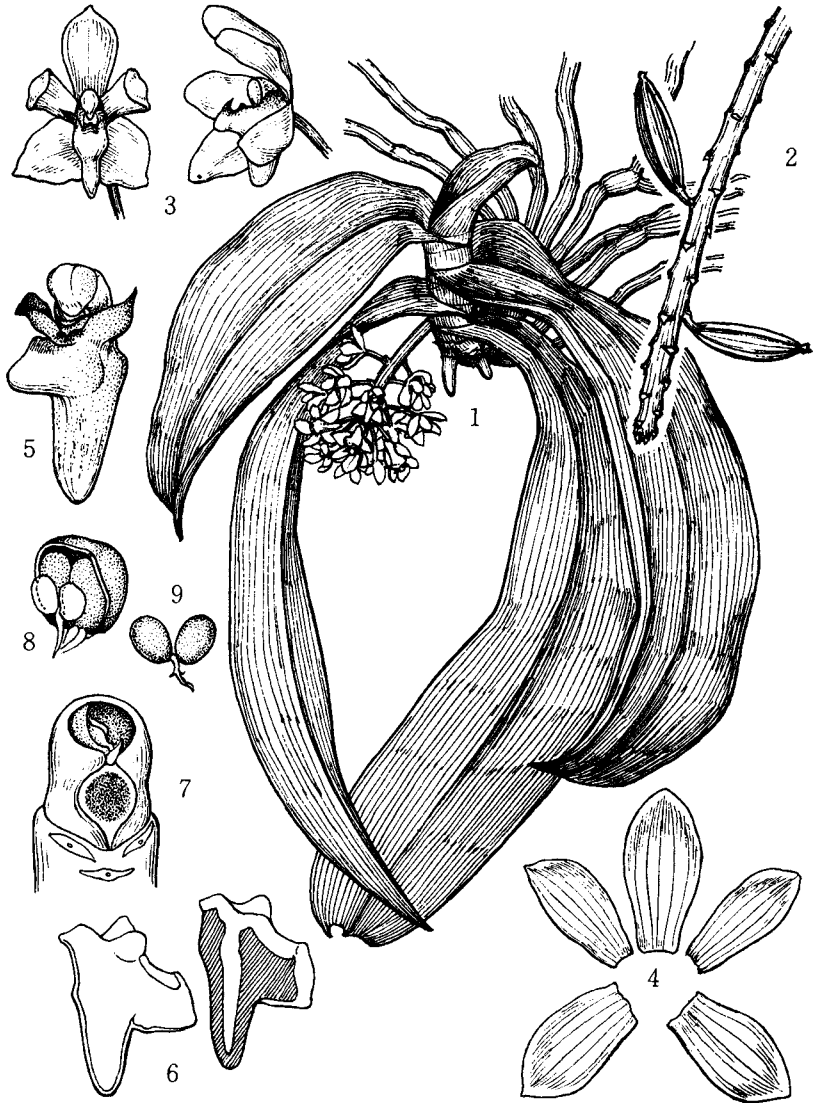


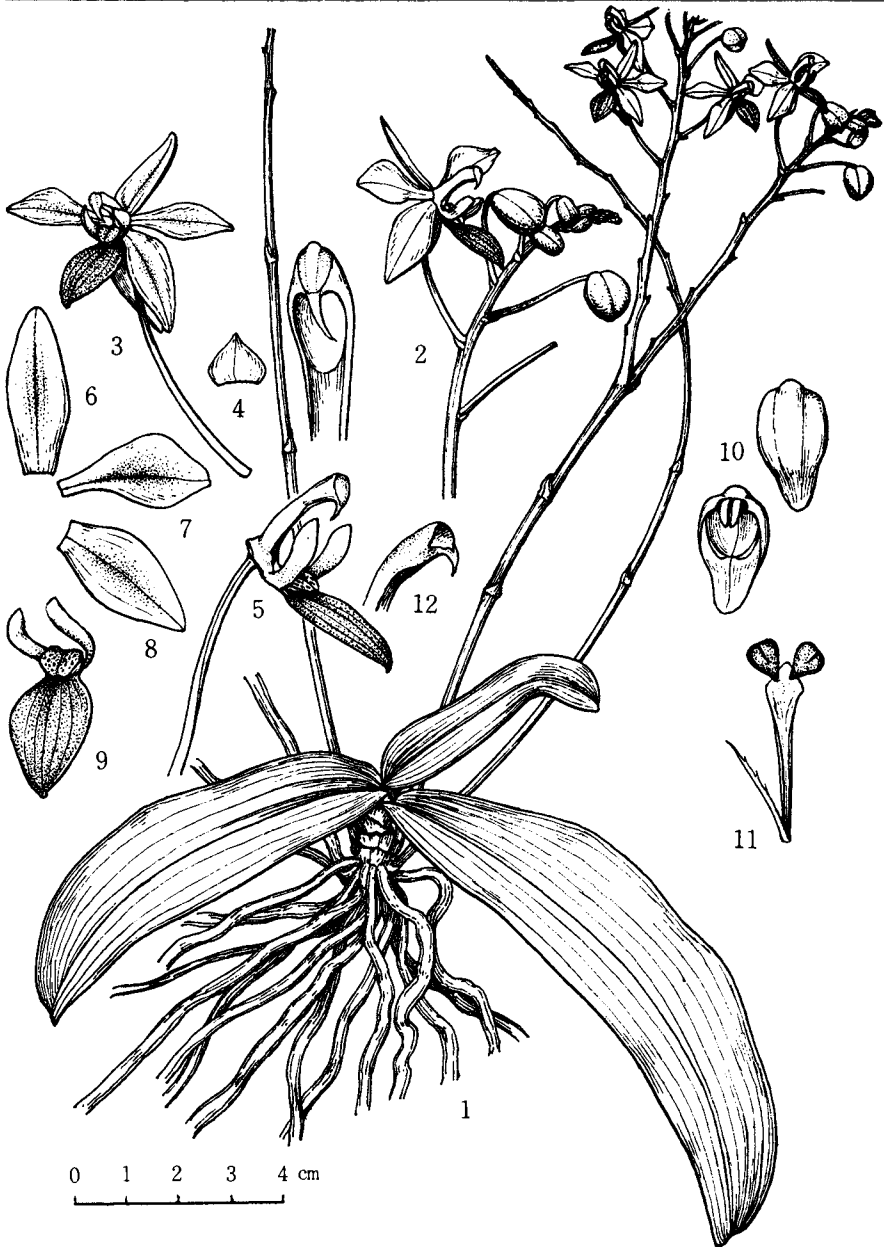
正宗敬 東亞植物圖譜(三十)

G. MASAMUNE : *Icones Plantarum Asiaticarum* (30)

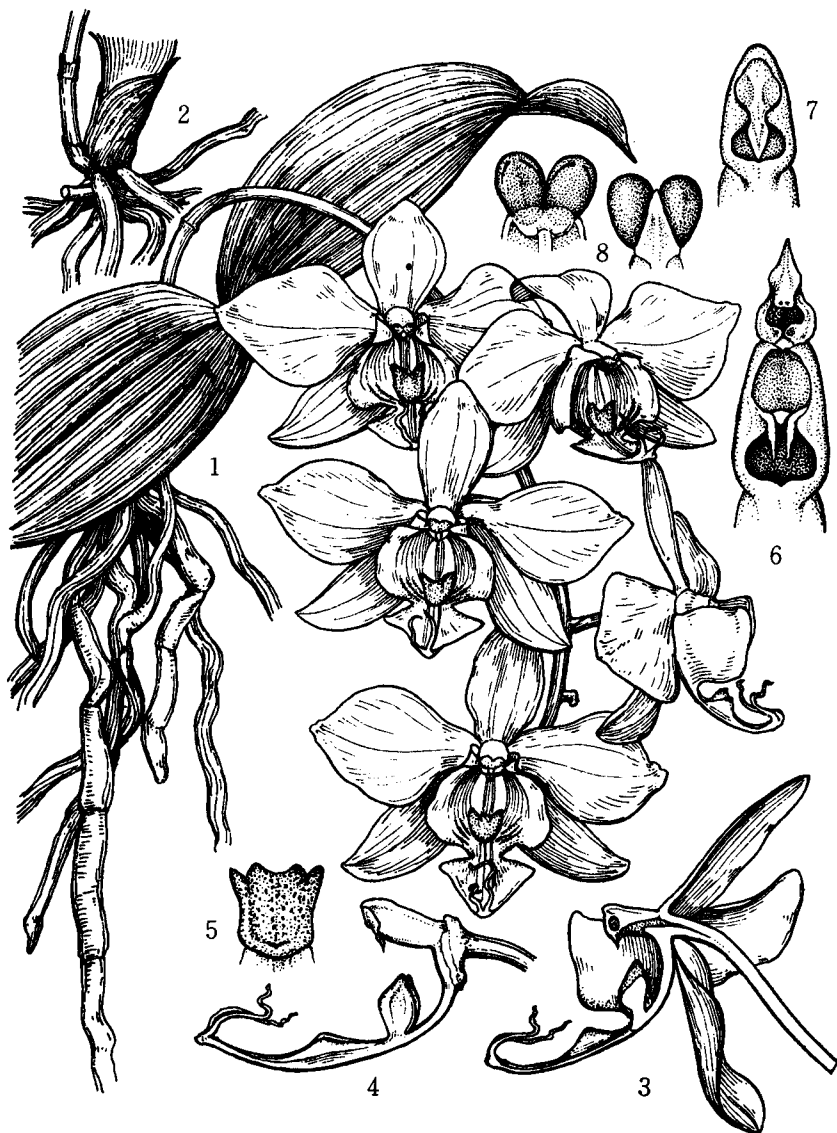


121 こうとうらん (*Saccolabium kotoense* YAMAMOTO)

台湾の紅頭嶼に固有。Epiphyte, endemic in the island of Kōtōsyō, Taiwan.

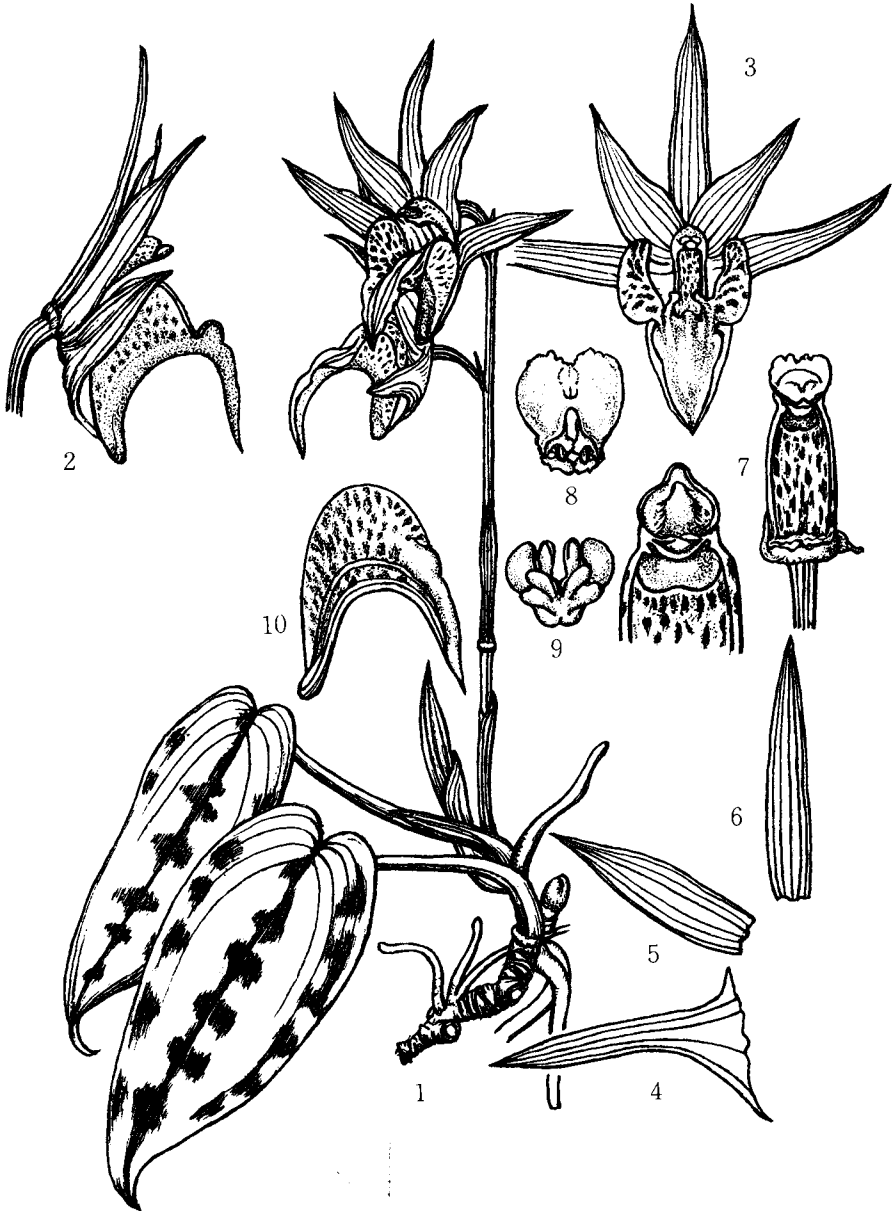


122 ひめこちようらん (*Phalenopsis ritewanensis* MASAMUNE)
 台湾の小紅頭嶼に固有。Endemic to the island of Syókôtósyô, Taiwan.

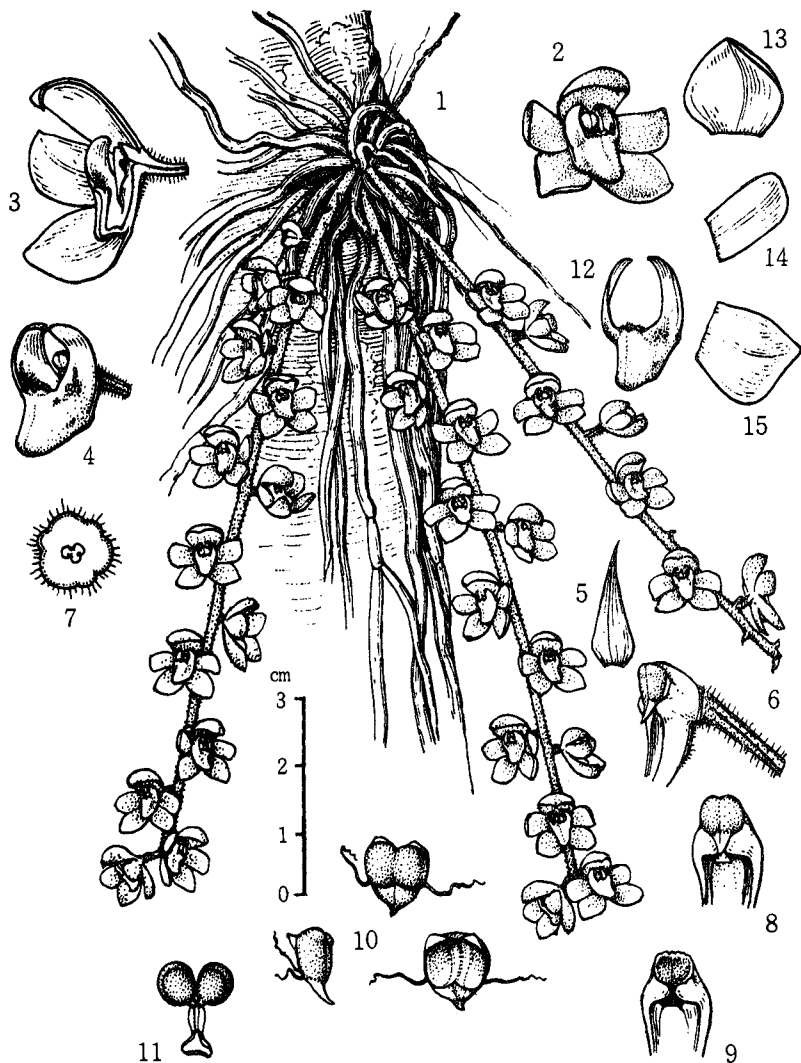


123 こちようらん (*Phalenopsis aphrodite* REICHB. f.)

台湾よりフィリッピンに分布。Spread over south Taiwan, Luzon Mindoro and adjacent small islands.

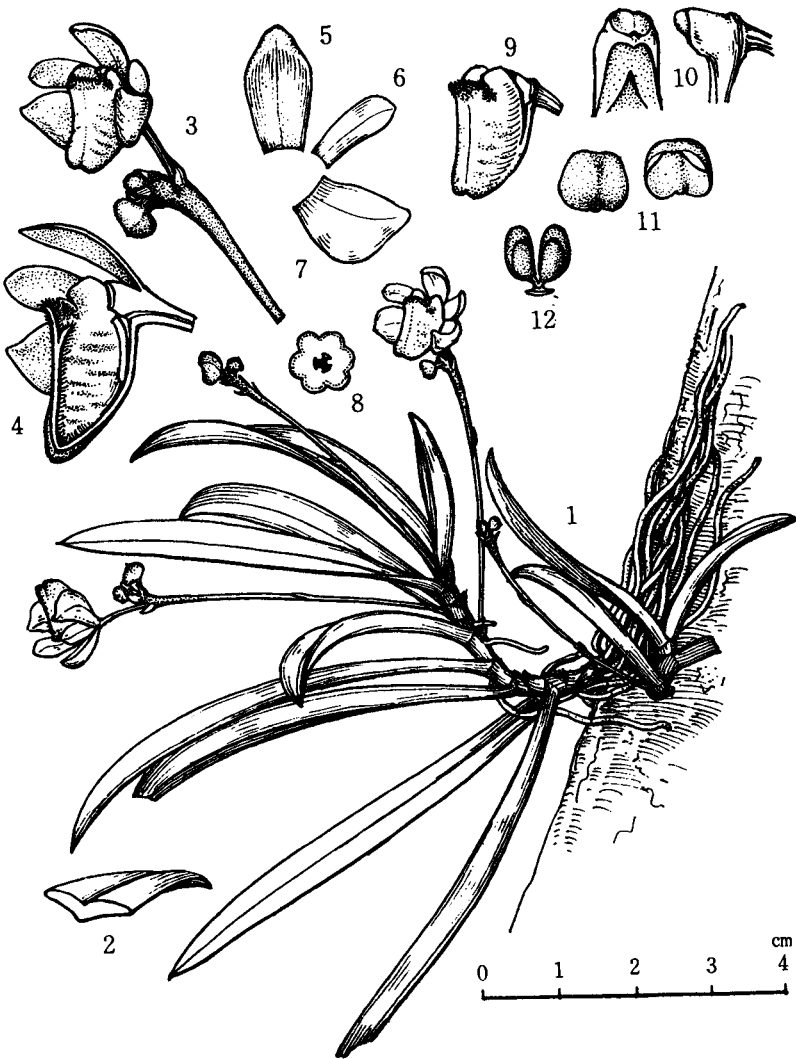


124 あおいらん (*Misobulbum cordifolium* SCHL.) 台湾の山地に産す。
Collected in the forest floor of an evergreen forest near Taihoku, Taiwan.



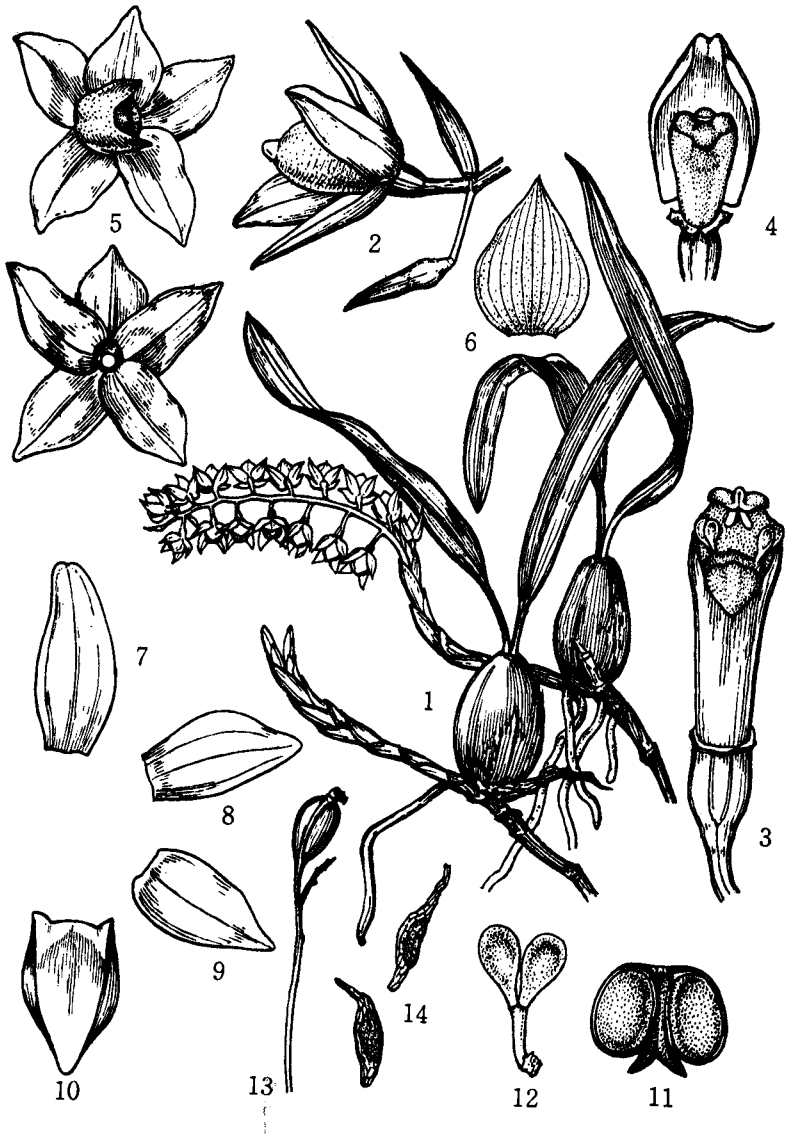
125 おおくもらん (*Sarcochilus segawai* MASAMUNE)

台湾の山地に固有の着生蘭。Endemic epiphyte, in the submountain region of Taiwan.



127 くすくすふうらん (*Thrixspermum kusukusense* SCHL.)

台湾南部の山地に固有の着生蘭。 Endemic epiphyte in the monsoon forest of Taiwan.



126 うらいたまらん (*Pholidota uraiense* HAY.)

台湾の山地に広く産する着生蘭，固有種。 Endemic epiphyte, in the rain forest of Taiwan.



128 こうとうひすいらん (*Vanda yamiense* MASAMUNE)

琉球列島の南部と紅頭嶼に産す。Endemic epiphyte, in the islands of Kōtōsyō and Uoturi-zima, a small island of the Ryūkyū Archipelago.

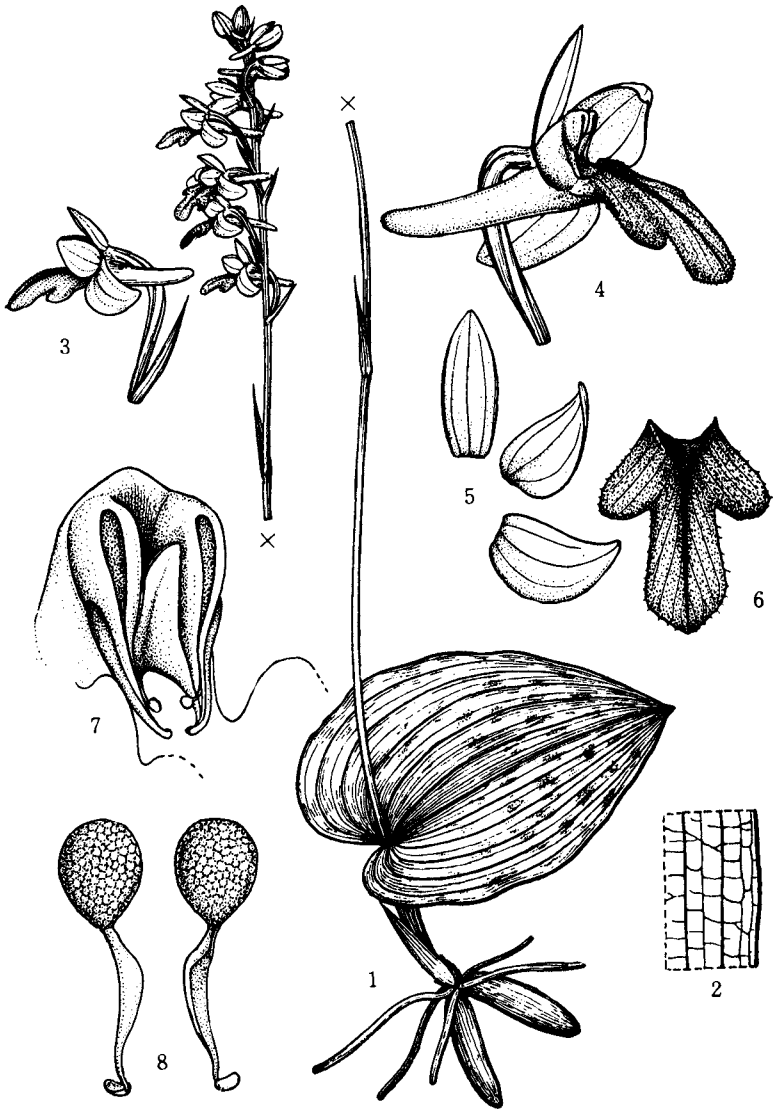
129 ひだべりかくらん (*Phajus undulatomarginata* HAY.)

台湾の山地に固有。Endemic in the submountain region of Taiwan.



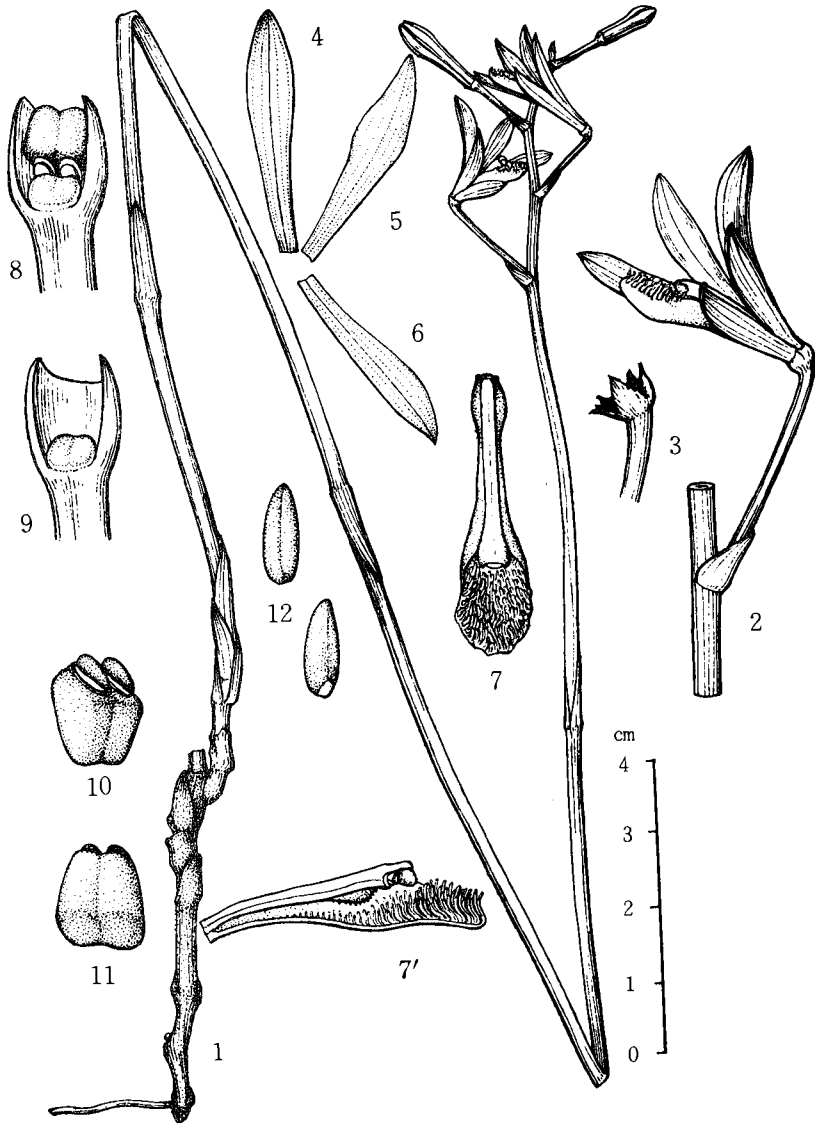
130 つくしちどり (*Platanthera yakumontana* MASAMUNE)

奄美大島と屋久島に固有。 Restricted to the islands of Yakushima and Amami-
ōsima.



131 にいたかひとつばらん (*Hemipilia formosana* HAY.)

台湾の高地草原に産し，南シナに分布する。 Collected in the alpine meadow of Taiwan.



132 ろうばいすけろくらん (*Lecanorchis cerina* FUKUYAMA)

台湾の山地常緑広葉樹林、林床に特産。 Collected in the rain forest of Taiwan.