

Atmospheric behaviors of polycyclic aromatic hydrocarbons at a Japanese remote background site, Noto peninsula, from 2004 to 2014

メタデータ	言語: eng 出版者: 公開日: 2017-10-04 キーワード (Ja): キーワード (En): 作成者: メールアドレス: 所属:
URL	http://hdl.handle.net/2297/43419

Supplementary Information

Atmospheric behaviors of polycyclic aromatic hydrocarbons at a Japanese remote background site, Noto peninsula, from 2004 to 2014

Ning Tang ^{a,*}, Mariko Hakamata ^a, Kousuke Sato ^a, Yumi Okada ^a, Xiaoyang Yang ^b,
Michiya Tatematsu ^a, Akira Toriba ^a, Takayuki Kameda ^c, Kazuichi Hayakawa ^a

^a Institute of Medical, Pharmaceutical and Health Sciences, Kanazawa University,
Kakuma-machi, Kanazawa 920-1192, Japan

^b State Key Laboratory of Environmental Criteria and Risk Assessment, Chinese Research
Academy of Environmental Sciences, Beijing 100012, China

^c Graduate School of Energy Science, Kyoto University, Gokasho, Uji 611-0011, Japan

Corresponding author

*Tel: +81 76 234 4458; fax: +81 76 234 4456; e-mail: n_tang@staff.kanazawa-u.ac.jp.

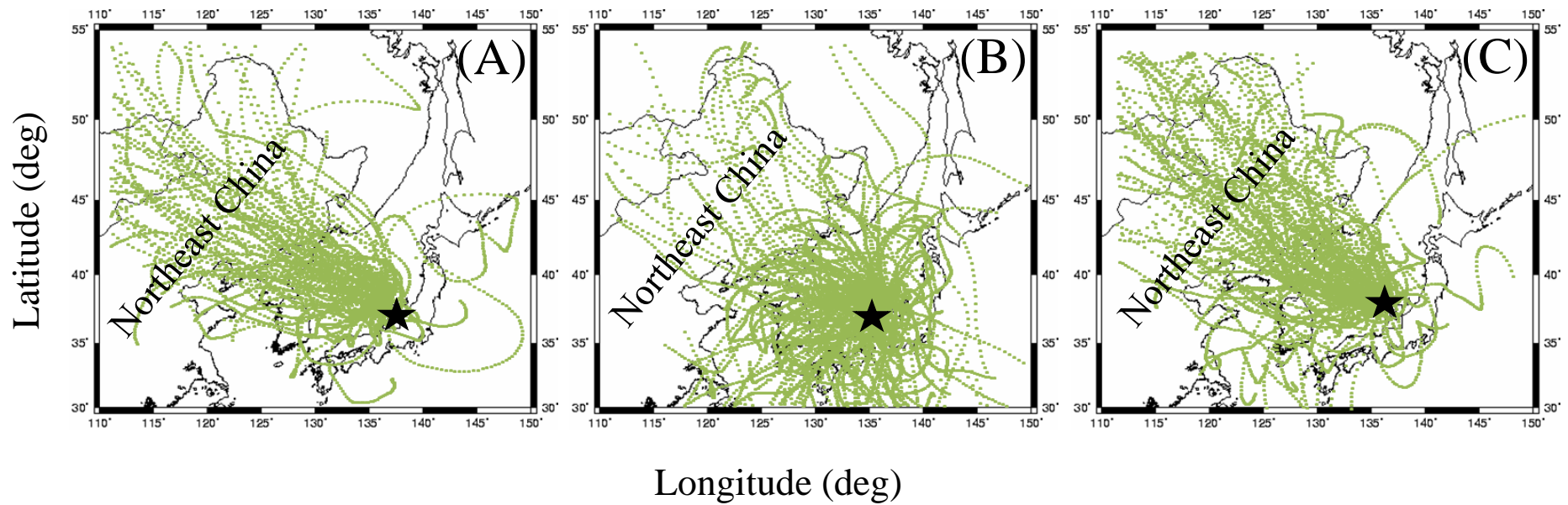


Fig. SI-1. Typical back trajectory analysis of air samples collected at NAMS during our sampling periods by using the Meteorological Data Explorer online program (METEX, <http://db.cger.nies.go.jp/metex/>).

★ : Noto Air Monitoring Station (NAMS); (A): Jan. – Apr., 2007; (B): May – Sep., 2007; (C): Oct. – Dec., 2007.

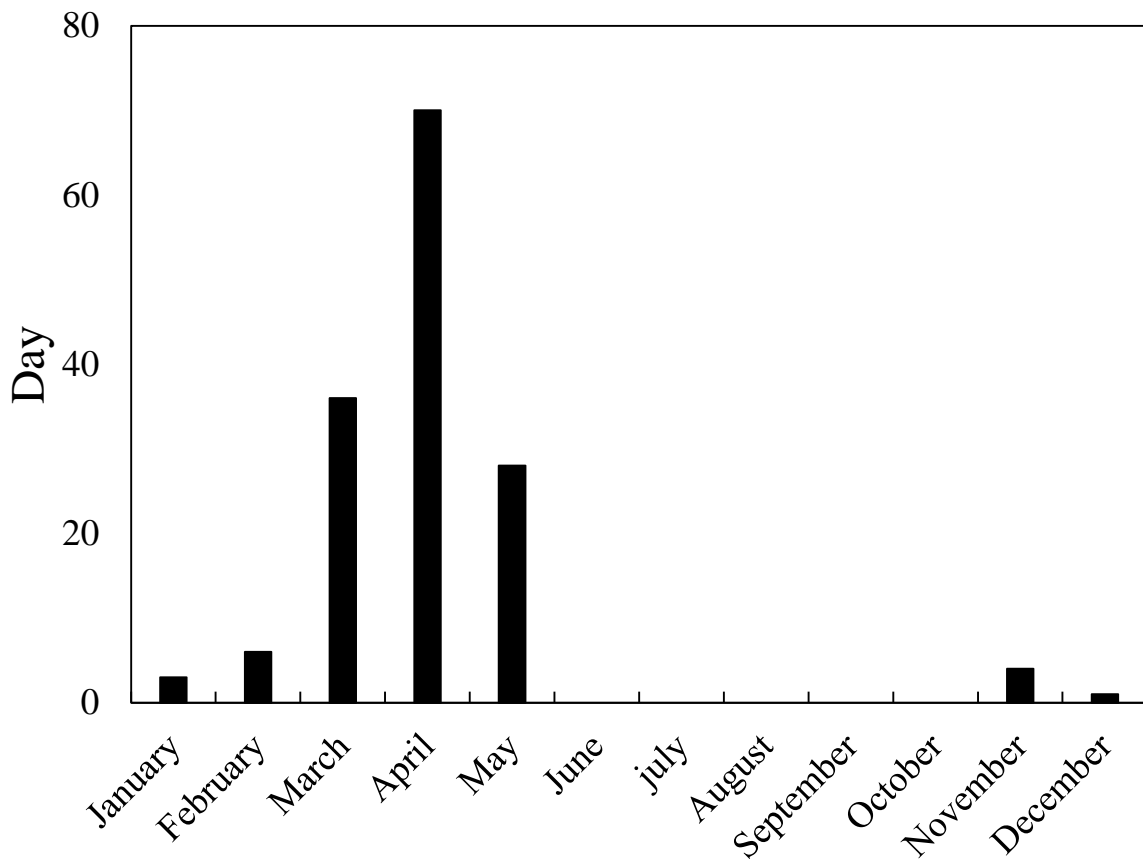


Fig. SI-2 Monthly Asian dust events observed in Ishikawa Prefecture from 1967 to 2010.

(Kanazawa Local Meteorological Office, Japan Meteorological Agency;

<http://www.jma-net.go.jp/kanazawa/mame/kousa/kousa.html>)

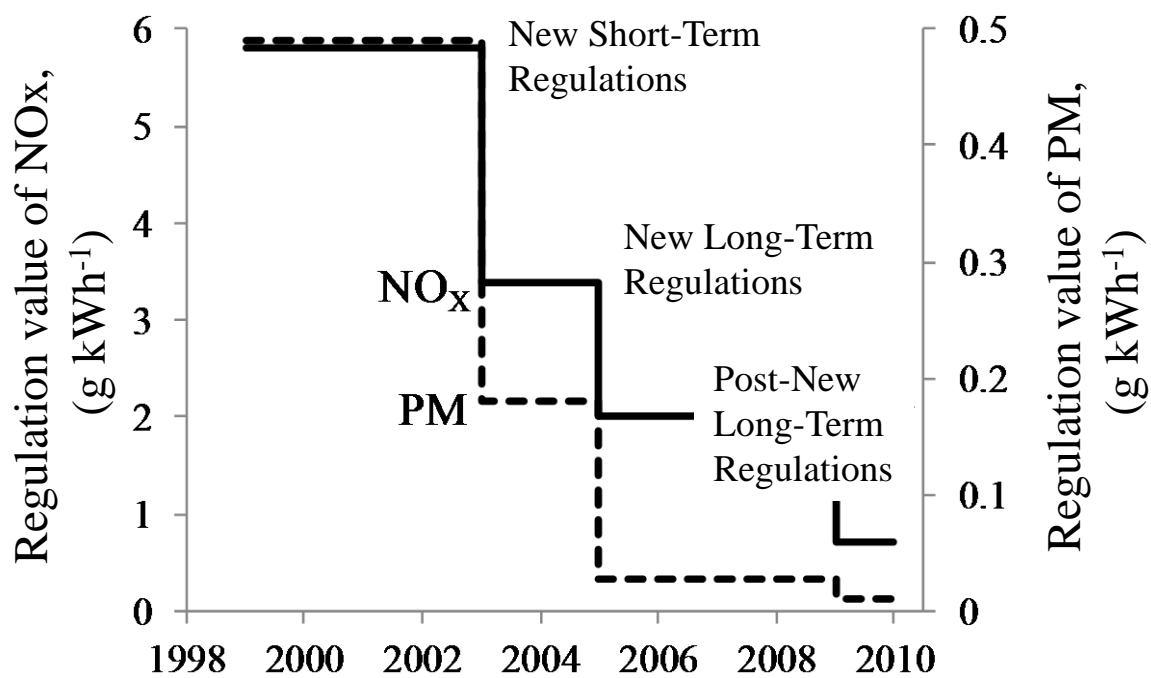


Fig. SI-3 Transition of Japanese regulation values of NO_x and particulates matters (PM) against new diesel-engine automobiles. (Hama et al., 2012)

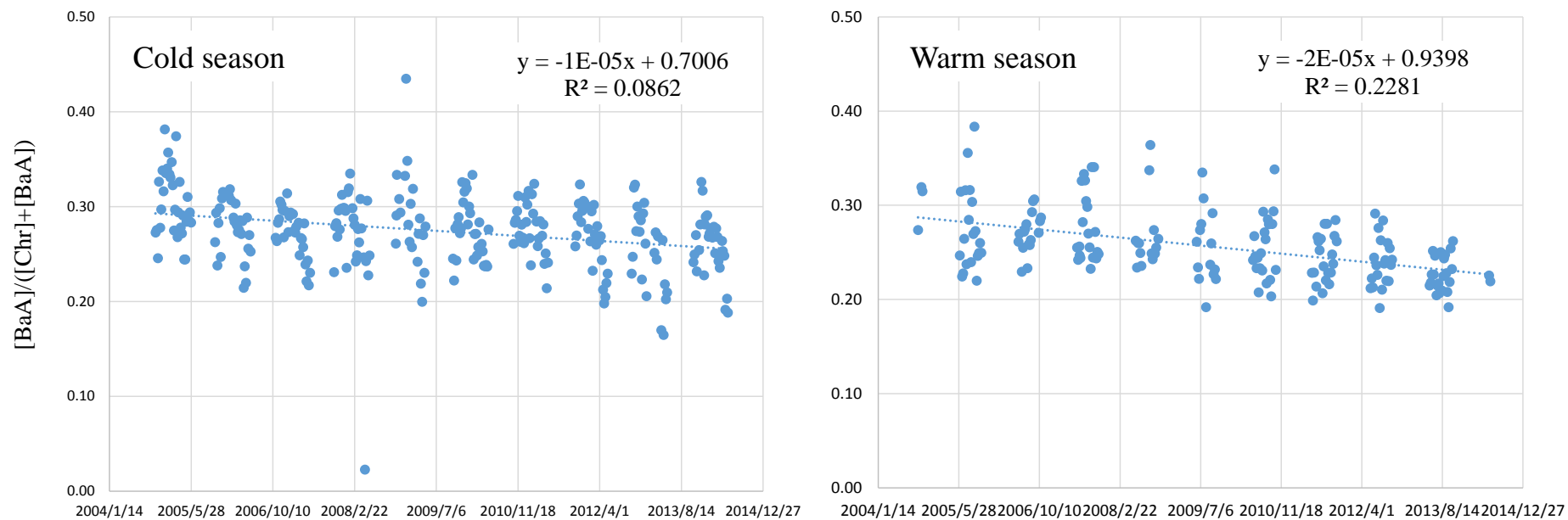


Fig. SI-4 Several PAH diagnostic ratios at NAMS from September 17, 2004 to June 8, 2014.

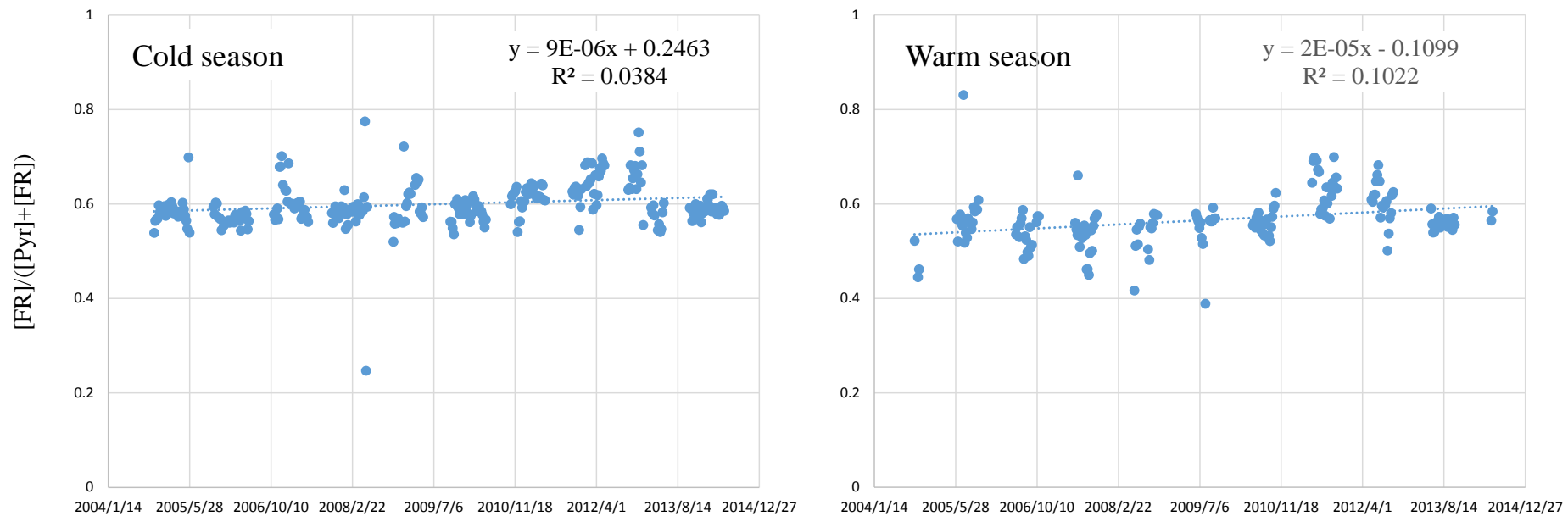


Fig. SI-4 Several PAH diagnostic ratios at NAMS from September 17, 2004 to June 8, 2014 (continued).

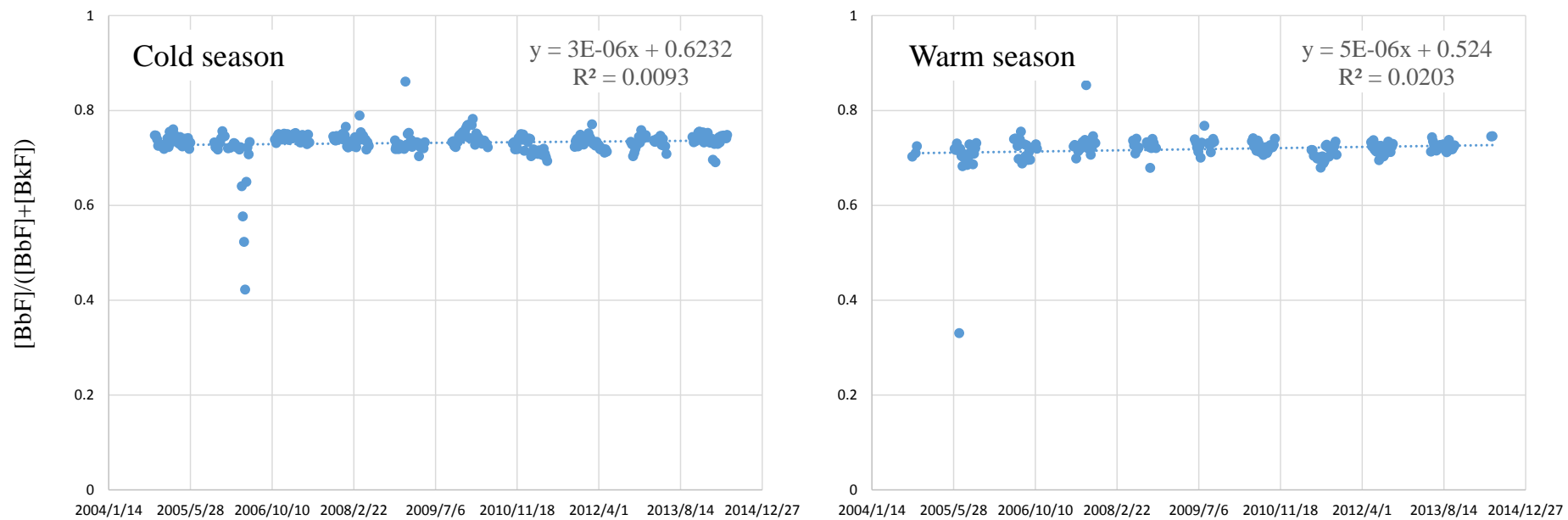


Fig. SI-4 Several PAH diagnostic ratios at NAMS from September 17, 2004 to June 8, 2014 (continued).

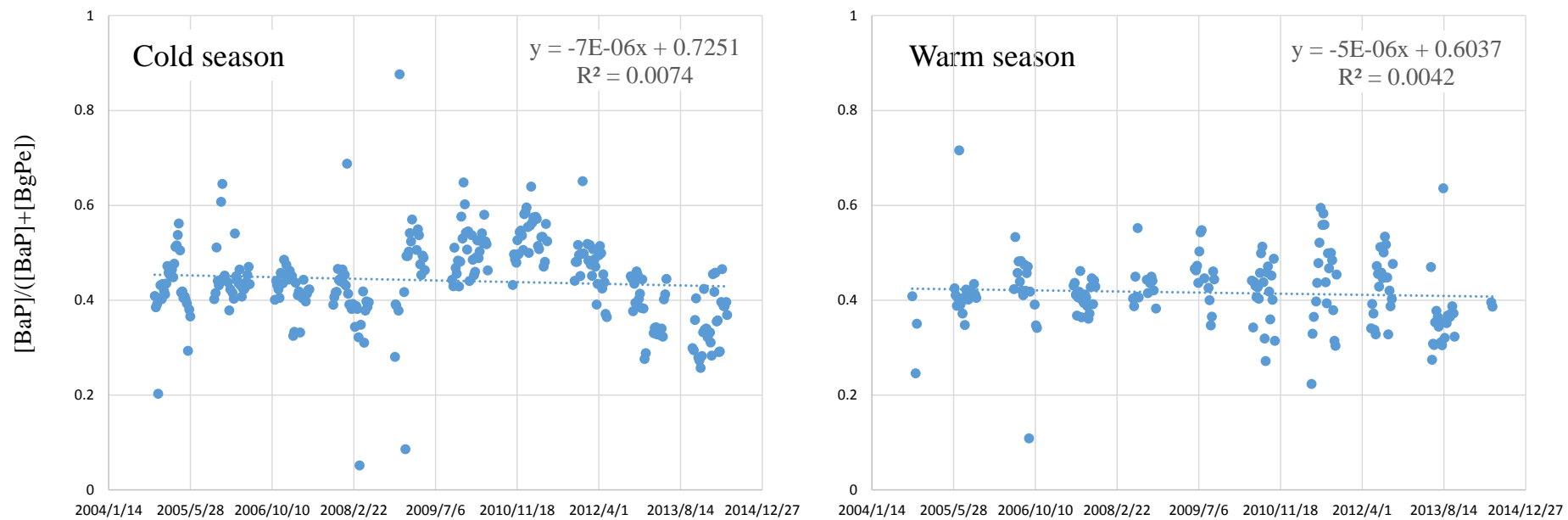


Fig. SI-4 Several PAH diagnostic ratios at NAMS from September 17, 2004 to June 8, 2014 (continued).

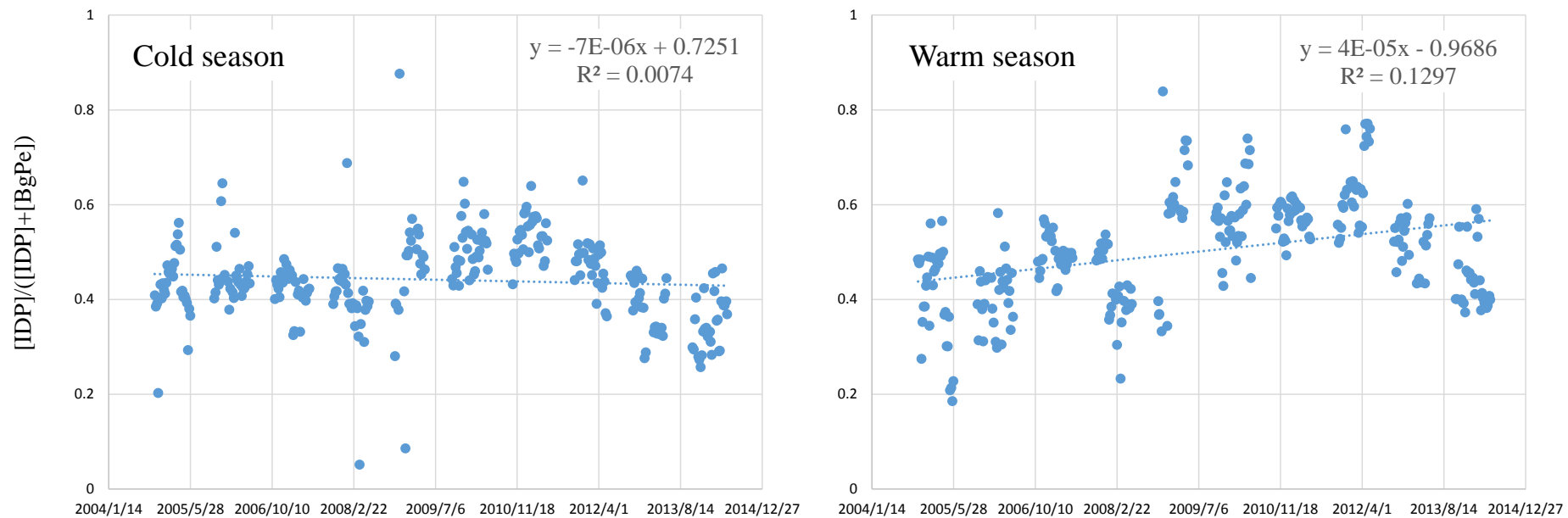


Fig. SI-4 Several PAH diagnostic ratios at NAMS from September 17, 2004 to June 8, 2014 (continued).