

Impact of bilateral internal thoracic-to-epigastric artery communications on salvaging total lower limb ischemia

メタデータ	言語: eng 出版者: 公開日: 2017-10-05 キーワード (Ja): キーワード (En): 作成者: メールアドレス: 所属:
URL	http://hdl.handle.net/2297/29291

Impact of Bilateral Internal Thoracic to Epigastric Artery Communications on Salvaging Total

Lower Limb Ischemia

Hayato Tada, MD,* Toshinari Tsubokawa, MD,* Tetsuo Konno, MD,* Kenshi Hayashi, MD, *

Katsuharu Uchiyama, MD,* Masa-aki Kawashiri, MD,* Shigeyuki Tomita, MD,† Hidekazu Ino,

MD,* Go Watanabe, MD,† Masakazu Yamagishi, MD, FACC*

*Divison of Cardiovascular Medicine, Kanazawa University Graduate School of Medicine, Kanazawa,

Japan

†Department of Cardiothoracic and General Surgery, Kanazawa University Hospital, Kanazawa, Japan

Correspondence should be addressed to:

Hayato Tada, MD

Divison of Cardiovascular Medicine, Kanazawa University Graduate School of Medicine,

13-1 Takara-machi, Kanazawa, 920-8641, Japan

Tell: +81-76-265-2000 (2251), Fax: +81-76-234-4251

E-mail: ht240z@med.kanazawa-u.ac.jp

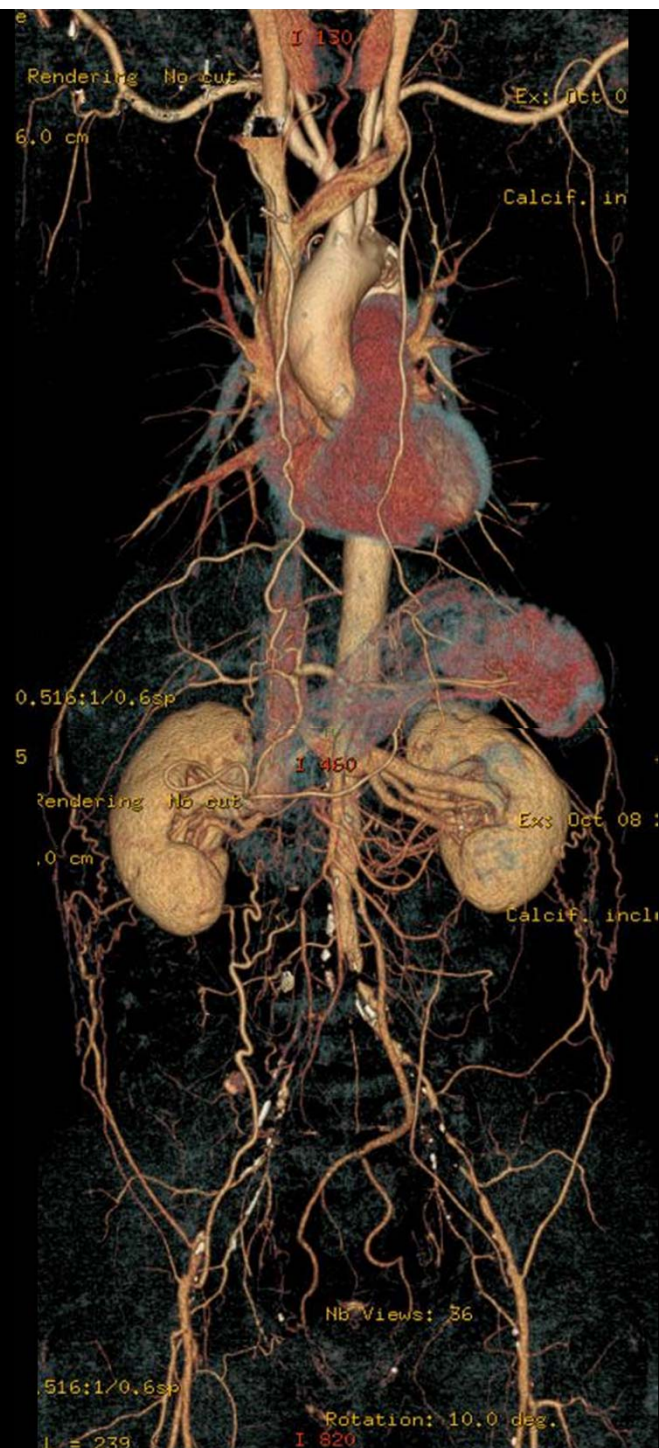
Sources of Funding: none declared. **Conflict of interest:** none declared.

A 76-year-old male was admitted to our hospital because of exertional chest pain and mild intermittent claudication. Computed tomography revealed total occlusion at both common iliac arteries, the distal portions of which were opacified by collateral flow from the left and right internal thoracic to epigastric arteries (A and B). In addition to coronary angiography which showed severe coronary lesions, selective angiograms of left and right internal thoracic arteries demonstrated total communication of these arteries to left and right iliac arteries through the superficial epigastric arteries (Online Video 1 and 2). Because this patient still had limb pain, bilateral axillo-femoral bypass grafting was performed, and then internal thoracic arteries were used for his coronary grafting. The internal thoracic artery is known to serving as collateral pathway to lower limbs (1). We suggest the reconstruction of lower limb flow if these internal thoracic arteries are used for coronary bypass grafting.

References

1. Yurdakul M, Tola M, Ozdemir E, Bayazit M, Cumhur T. Internal thoracic artery-inferior epigastric artery as a collateral pathway in aortoiliac occlusive disease. *J Vasc Surg* 2006;43:707–713.

A



B

