

Intestinal angina in a patient with hypertrophic obstructive cardiomyopathy: a case report

メタデータ	言語: eng 出版者: 公開日: 2017-10-05 キーワード (Ja): キーワード (En): 作成者: メールアドレス: 所属:
URL	http://hdl.handle.net/2297/46530

CASE REPORT

Open Access



Intestinal angina in a patient with hypertrophic obstructive cardiomyopathy: a case report

Takuto Hamaoka^{1*}, Wataru Omi², Yoshiteru Sekiguti², Shigeo Takata², Shuichi Kaneko¹, Oto Inoue², Shinichiro Takashima², Hisayoshi Murai¹, Soichiro Usui¹, Takeshi Kato¹, Hiroshi Furusho¹ and Masayuki Takamura¹

Abstract

Background: Intestinal angina is characterized by recurrent postprandial abdominal pain and anorexia. Commonly, these symptoms are caused by severe stenosis of at least two vessels among the celiac and mesenteric arteries. However, intestinal perfusion is affected not only by the degree of arterial stenosis but also by systemic perfusion. We experienced a unique case of intestinal angina caused by relatively mild stenosis of the abdominal arteries complicated with hypertrophic obstructive cardiomyopathy.

Case presentation: We report an 86-year old Japanese man with hypertrophic obstructive cardiomyopathy and advanced atrioventricular block who was diagnosed with intestinal angina. Computed tomography showed mild stenosis of the celiac artery and severe stenosis of the inferior mesenteric artery, and these lesions were relatively mild compared with other reports. A dual-chamber pacemaker with right ventricular apical pacing was implanted to improve the obstruction of the left ventricular outflow tract. After implantation, the patient's abdominal symptoms diminished markedly, and improvement of the left ventricular outflow tract obstruction was observed.

Conclusions: Although intestinal angina is generally defined by severe stenosis of at least two vessels among the celiac and mesenteric arteries, the present case suggests that hemodynamic changes can greatly affect intestinal perfusion and induce intestinal angina in the presence of mild stenosis of the celiac and mesenteric arteries.

Keywords: Intestinal angina, Hypertrophic obstructive cardiomyopathy, Advanced atrioventricular block, Case report

Background

Intestinal angina is caused by chronic intestinal ischemia characterized by recurrent postprandial abdominal pain and a decrease in body weight with anorexia [1]. The symptom is commonly manifested when at least two vessels of the celiac and mesenteric arteries have developed moderate to severe stenosis or occlusion. Hypertrophic obstructive cardiomyopathy (HOCM) is associated with a reduction in cardiac output and systemic perfusion fluctuated by multiple hemodynamic conditions [2] such as hypovolemia or high blood pressure. Hypovolemic conditions lead to a reduction in left ventricular volume and the narrowing or collapse of the left ventricular outflow

tract (LVOT), resulting in an increased LVOT pressure gradient. On the other hand, hypertension increases the cardiac afterload, which inhibits the collapse of LVOT and results in a decreased LVOT pressure gradient [3].

In this report, we describe a unique case of intestinal angina complicated with HOCM and abruptly worsened by advanced atrioventricular (AV) block in the presence of mild stenosis of the abdominal arteries.

Case presentation

An 86-year old Japanese man was admitted to our hospital because of worsening postprandial abdominal pain, anorexia, and general malaise. He was previously diagnosed with HOCM on cardiac magnetic resonance imaging and echocardiography, but because he was asymptomatic, he was not taking oral medications. He had been suffering from repetitive and paroxysmal upper abdominal pain for

* Correspondence: tokuta114@yahoo.co.jp

¹Department of Disease Control and Homeostasis, Graduate School of Medical Science, Kanazawa University, 13-1 Takara-machi, Kanazawa 920-8641, Japan

Full list of author information is available at the end of the article



1 year. His symptoms occurred approximately 15 minutes after eating and usually disappeared within 1 hour and were sometimes accompanied by watery diarrhea. Once his abdominal attacks occurred, he had great difficulties with oral intake due to postprandial pain, but his symptoms disappeared upon fluid replacement for several days. He presented to our department because of worsening and more sustained symptoms within the week prior.

He was emaciated and exhausted and had lost 7 kg in the last 1 year. A physical examination showed a low blood pressure (90/60 mmHg) and bradycardia (40 beats per minute). He had no signs of disorientation or paralysis. A holosystolic ejection murmur at the fourth left sternal border was auscultated, and abdominal palpitation showed no abnormal findings. The murmur was accentuated by the Valsalva maneuver and walking. Laboratory data showed slight anemia (hemoglobin 11.5 g/day), hypoalbuminemia (3.8 g/dL, normal range 3.8–5.3 g/dL), and mild renal dysfunction (serum creatinine (Cre) 1.33 mg/dL, normal range 0.6–1.2 mg/dL; blood urea nitrogen (BUN) 39 mg/dL, normal range 9–23 mg/dL; estimated glomerular filtration rate (eGFR) 39.5 mL/minute/1.73 m²), and no signs of dyslipidemia or diabetes mellitus (low density lipoprotein cholesterol 98 mg/dL; glycosylated hemoglobin 5.3 %; fasting blood glucose 100 mg/dL). Our patient's activated partial thromboplastin time (33.1 seconds) and prothrombin time (13.0 seconds) were within the normal ranges. Gastroscopy and colonoscopy examinations detected no abnormal findings, while a computed tomography (CT) scan with contrast enhancement demonstrated moderate stenosis of the celiac artery and severe stenosis of the inferior mesenteric artery (Fig. 1). In addition, significant dilatation of the bowels was observed by CT and chest X-ray examinations (Fig. 2).

An electrocardiogram revealed advanced AV block and left high voltage with ST-T change; AV disturbance had not been detected previously (Fig. 3). Transthoracic echocardiography showed significant obstruction of the LVOT (pressure gradient, 35 mmHg) and mitral regurgitation with systolic anterior motion of the anterior mitral leaflet (Fig. 4). These echocardiographic findings were similar to those of echocardiography performed the previous year on our patient.

CT angiography was classified as mild to account for our patient's severe postprandial pain, since our patient's superior mesenteric artery, which had the widest intestinal perfusion area, was patent in this patient; however, in many previous reports concerning intestinal angina, stenosis of this artery was demonstrated, and angioplasty was performed [4]. Thus, it was suspected that hemodynamic failure contributed to the pathophysiology. That is, under the chronic low output condition of uncontrolled HOCM, factors such as occasional dehydration and bradycardia had reduced systemic perfusion, especially that of intestinal blood flow. We performed a pacemaker implantation with right ventricular apical pacing to improve our patient's hemodynamic condition. After dual-chamber pacemaker implantation, pacing AV delay was optimized for a minimum LVOT pressure gradient and mitral valve regurgitation under echocardiographic estimations (AV delay 100 milliseconds for LVOT 14.6 mmHg, Fig. 4). Following these procedures, our patient's appetite and daily activity improved dramatically. In addition, his blood pressure improved significantly, his renal function became normal (Cre, 0.83 mg/dL; BUN, 25 mg/dL; eGFR, 66.2 mL/minute/1.73 m²), and a chest X-ray examination showed significant improvement of intestinal dilatation (Fig. 2), suggesting increase in systemic and intestinal perfusion.

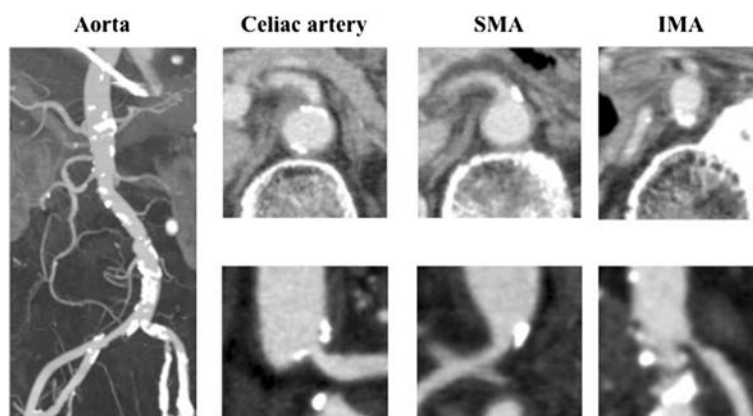


Fig. 1 Enhanced computed tomography showed severe atherosclerosis of the arteries. The aorta showed broad calcifications, and the celiac artery showed moderate stenosis, although the lumen of the SMA was relatively patent. In addition, stenosis of the IMA was very severe. IMA inferior mesenteric artery, SMA superior mesenteric artery

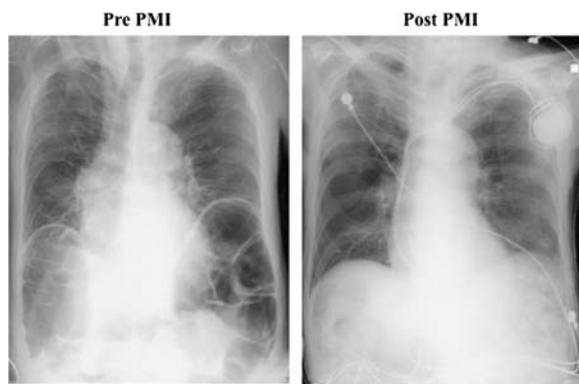


Fig. 2 Chest X-ray examinations pre-PMI demonstrated significant dilatation of the bowels; however, this dilatation was improved after PMI with right ventricular apical pacing. *PMI* pacemaker implantation

Finally, he has been completely free from abdominal symptoms in the last 3 months.

Discussion

Classically, chronic intestinal angina is caused by a reduction in mesenteric blood flow [1], and the pathophysiology of most cases is atherosclerotic stenosis of the celiac and mesenteric arteries. Arterial dissection, fibromuscular dysplasia, and vasculitis are included as rare etiologies of arterial narrowing, and the median arcuate ligament of the diaphragm can compress the celiac

artery and disturb blood flow (median arcuate ligament syndrome) [5, 6]. Intestinal circulation consists of an abundant collateral blood supply, and chronic intestinal ischemia is associated with high-grade stenosis or occlusion of two or more of the three major vessels: the celiac artery, the superior and inferior mesenteric arteries [7, 8]. In our case, the arterial lesions were relatively mild compared with previous reports [9, 10]; thus, we hypothesized that our patient's major symptoms were not due to his arterial lesions alone.

Specifically, our patient's symptoms depended greatly on his hemodynamic condition, which caused a flow discrepancy between demand and supply [1]. Once an abdominal attack occurred, our patient's blunted oral intake exacerbated repetitive postprandial attacks; only fluid replacement led to remission. Furthermore, advanced AV block abruptly worsened his condition and pacemaker implantation with right ventricular apical pacing resulted in complete remission of his symptoms. In patients with HOCM, dehydration augments LVOT obstruction and mitral regurgitation, leading to reduced cardiac output [2]. Pacemaker implantation with right ventricular apical pacing increases cardiac output by optimizing chronotropic action as well as by lowering the LVOT gradient in HOCM patients [11, 12]. Nonocclusive mesenteric ischemia is a type of intestinal ischemia attributed to hemodynamic failure, sometimes without arterial stenosis or occlusion. Vasospasm of mesenteric

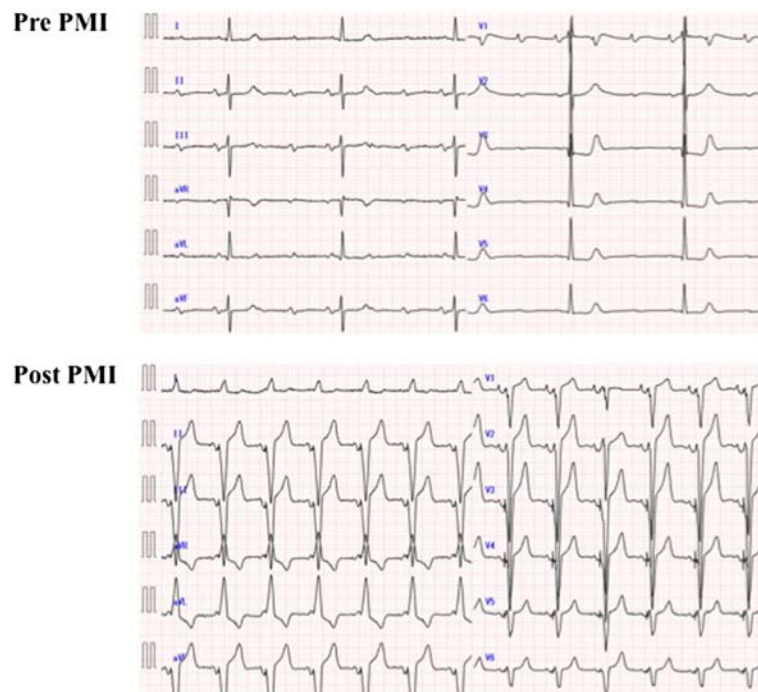


Fig. 3 An electrocardiogram pre-PMI showed severe bradycardia with advanced AV block (approximately 40 beats/minute). After PMI, bradycardia was improved. *AV* atrioventricular, *PMI* pacemaker implantation

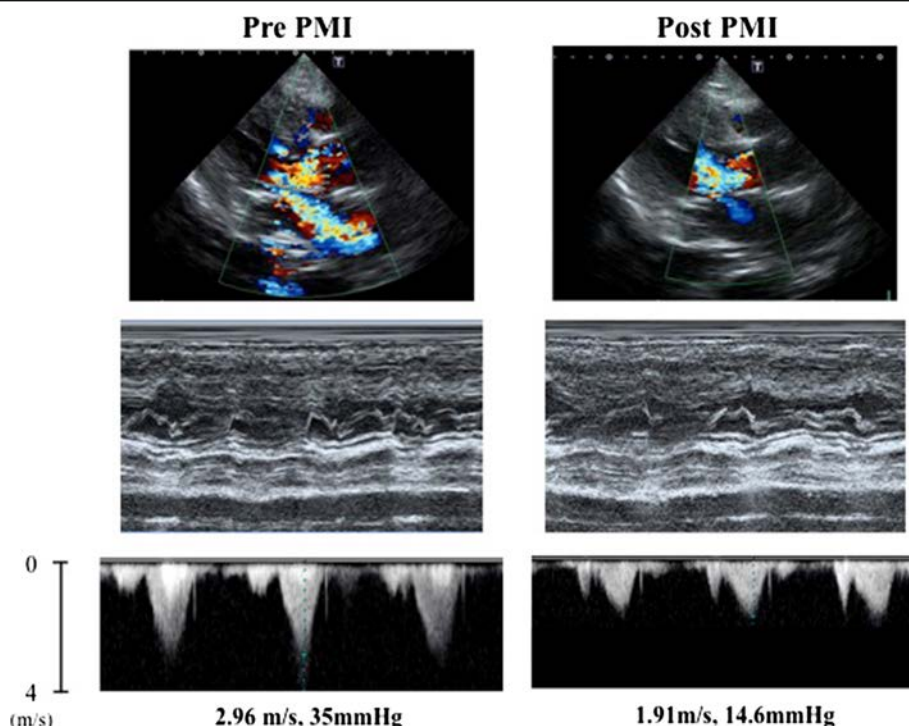


Fig. 4 Transthoracic echocardiography demonstrated severe MR with SAM and LVOT obstruction (LVOT pressure gradient, 35 mmHg) pre-PMI. After PMI, transthoracic echocardiography showed significant improvements in MR and LVOT obstruction (LVOT pressure gradient, 14.6 mmHg). *LVOT* left ventricular outflow tract, *MR* mitral valve regurgitation, *SAM* systolic anterior motion

vessels is assumed to be a major pathophysiological and acute homeostatic response used to maintain systemic circulation at the expense of the splanchnic blood supply in critically ill conditions, such as cardiogenic shock [13]. In our case, the patient complained mainly of long-standing postprandial abdominal pain without any signs of severe circulatory failure in other organs. He was later diagnosed with uncontrolled HOCM complicated with stenosis of the celiac and mesenteric arteries, and his symptoms reflected excessive hemodynamic fluctuation specific to HOCM. Generally, easily digestible meals or vasodilators are used as supportive therapy, while the definitive treatment for intestinal angina is revascularization by surgery or catheterization [13]. However, our patient was too old and emaciated to undergo these invasive treatments. Although he underwent pacemaker implantation, it was less invasive than was revascularization therapy. HOCM is commonly treated with oral medications, such as calcium channel blockers, β -adrenoreceptor blockers, and antiarrhythmic agents included in group Ia of the Vaughan-Williams criteria, to reduce myocardial oxygen consumption and inhibit left ventricular hypercontraction. Percutaneous transluminal septal myocardial ablation, septal myectomy, and pacemaker implantation are other potential treatments if oral therapy is not successful. Although the efficacy of septal

myectomy in improving the long-term prognosis of HOCM patients was reported previously [14], this treatment is well known for its high mortality rate, with older age being a risk factor [15]. In this case, pacemaker implantation was selected as the treatment, because our patient's systemic circulation and abdominal symptoms were clearly exacerbated by bradycardia from AV block.

Some limitations were observed in this case report. No intestinal hemodynamic parameters were evaluated, because abdominal ultrasound was unable to detect the celiac and mesenteric arterial flows. Furthermore, our patient was very emaciated and unable to undergo catheter examination. However, after pacemaker implantation, his symptoms, intestinal dilatation, and renal function improved without fluid replacement or additional medications, which reflected improvement of his systemic circulation.

Conclusions

This case suggests that hemodynamic changes could greatly affect intestinal perfusion in the presence of mild stenosis of the celiac and mesenteric arteries. Thus, it should be recognized that intestinal angina might be a symptom of cardiovascular disease, especially cardiac failure.

Abbreviations

AV: atrioventricular; BUN: blood urea nitrogen; Cre: creatinine; CT: computed tomography; eGFR: estimated glomerular filtration rate; HOCM: hypertrophic obstructive cardiomyopathy; LVOT: left ventricular outflow tract

Acknowledgements

We gratefully acknowledge the patient described in this report.

Funding

The authors declare no funding associated with this report.

Authors' contributions

TH compiled the case and drafted the initial manuscript. OI, ST, and TK contributed significantly to writing the manuscript. WO, YS, and ST performed the initial literature review, clinical diagnosis, and treatment of the case. SU, HF, HM, SK, and MT proofread the manuscript prior to submission. All authors read and approved the final manuscript.

Competing interests

The authors declare that they have no competing interests.

Consent for publication

Written informed consent for publication of this case report and any accompanying images was obtained from the patient. A copy of the written consent is available for review by the Editor-in-Chief of this journal.

Ethics approval and consent to participate

Not applicable since this case report was retrospective and observational.

Author details

¹Department of Disease Control and Homeostasis, Graduate School of Medical Science, Kanazawa University, 13-1 Takara-machi, Kanazawa 920-8641, Japan. ²Department of Cardiology, Kanazawa Municipal Hospital, Kanazawa, Japan.

Received: 17 June 2016 Accepted: 5 September 2016

Published online: 29 September 2016

References

- Schneider TA, Longo WE, Ure T, Vernava III AM. Mesenteric ischemia. Acute arterial syndromes. *Dis Colon Rectum*. 1994;37:1163–74.
- Varma PK, Neema PK. Hypertrophic cardiomyopathy: Part 1 - introduction, pathology and pathophysiology. *Ann Card Anaesth*. 2014;17:118–24.
- Maron MS, Olivetto I, et al. Hypertrophic cardiomyopathy is predominantly a disease of left ventricular outflow tract obstruction. *Circulation*. 2006;114:2232–9.
- Sundermeyer A, Zapenko A, et al. Endovascular treatment of chronic mesenteric ischemia. *Interv Med Appl Sci*. 2014;6(3):118–24.
- Kim AY, Ha HK. Evaluation of suspected mesenteric ischemia: efficacy of radiologic studies. *Radiol Clin North Am*. 2004;41:327–42.
- Cognet F, Ben Salem D, Dransart M, et al. Chronic mesenteric ischemia: Imaging and percutaneous treatment. *Radiographics*. 2002;22:863–80.
- Van Bockel JH, Geelkerken RH, Wasser MN. Chronic splanchnic ischaemia. *Best Pract Res Clin Gastroenterol*. 2001;15:99–119.
- Walker TG. Mesenteric vasculature and collateral pathways. *Semin Interv Radiol*. 2009;26:167–74.
- Matsuda M, Ikeda S, et al. Intestinal angina due to atherosclerosis in a 45-year-old systemic lupus erythematosus patient. *Intern Med*. 2010;49:2175–8.
- Walker TG. Mesenteric ischemia. *Semin Interv Radiol*. 2009;26:175–83.
- Fananapazir L, Epstein ND, Curiel RV, et al. Long-term results of dual-chamber (DDD) pacing in obstructive hypertrophic cardiomyopathy. Evidence for progressive symptomatic and hemodynamic improvement and reduction of left ventricular hypertrophy. *Circulation*. 1994;90:2731–42.
- Jeanrenaud X, Goy JJ, Kappenberger L. Effects of dual-chamber pacing in hypertrophic obstructive cardiomyopathy. *Lancet*. 1992;339:1318–23.
- Mastoraki A, Arkadopoulos N, et al. Mesenteric ischemia: pathogenesis and challenging diagnostic and therapeutic modalities. *World J Gastrointest Pathophysiol*. 2016;7:125–30.
- Robbins RC, Stinson EB. Long-term results of left ventricular myotomy and myoectomy for obstructive hypertrophic cardiomyopathy. *J Thorac Cardiovasc Surg*. 1996;111:586–94.
- Smedira NG, Lytle BW, et al. Current effectiveness and risks of isolated septal myectomy for hypertrophic obstructive cardiomyopathy. *Ann Thorac Surg*. 2008;85:127–33.

Submit your next manuscript to BioMed Central and we will help you at every step:

- We accept pre-submission inquiries
- Our selector tool helps you to find the most relevant journal
- We provide round the clock customer support
- Convenient online submission
- Thorough peer review
- Inclusion in PubMed and all major indexing services
- Maximum visibility for your research

Submit your manuscript at
www.biomedcentral.com/submit

