

# Isolation and characterization of recombinant *Drosophila Copia* aspartic proteinase

メタデータ	言語: eng 出版者: 公開日: 2017-10-05 キーワード (Ja): キーワード (En): 作成者: メールアドレス: 所属:
URL	<a href="http://hdl.handle.net/2297/3237">http://hdl.handle.net/2297/3237</a>

## Isolation and characterization of Recombinant *Drosophila copia* aspartic proteinase

Senarath B.P. ATHAUDA<sup>\*, †, ‡</sup>, Katsuji YOSHIOKA<sup>§</sup>, Tadayoshi SHIBA<sup>//</sup> and Kenji TAKAHASHI<sup>\*, †, 1</sup>

\*Department of Biophysics and Biochemistry, Graduate School of Science, The University of Tokyo, Bunkyo-ku, Tokyo 113-0033, Japan, † Laboratory of Molecular Biochemistry, School of Life Science, Tokyo University of Pharmacy and Life Science, 1432-1 Horinouchi, Hachioji, Tokyo 192-0392, Japan, ‡ Department of Biochemistry, Faculty of Medicine, University of Peradeniya, Peradeniya, and Institute of Fundamental Studies, Kandy, Sri Lanka, § Division of Cell Cycle Regulation, Cancer Research Institute, Kanazawa University, Kanazawa, Ishikawa 920-0934, Japan, and // Department of Biosciences, School of Science, Kitasato University, Kanagawa 228-8555, Japan.

Running title: Recombinant *Drosophila copia* aspartic proteinase

---

Abbreviations: DAN, diazoacetyl-D,L-norleucine methyl ester; DTT, dithiothreitol; ORF, open reading frame; VLP, virus-like particles.

<sup>1</sup>To whom correspondence should be addressed (e-mail [kenjita@ls.toyaku.ac.jp](mailto:kenjita@ls.toyaku.ac.jp)).

The wild type *copia gag* precursor protein of *Drosophila melanogaster* expressed in *E. coli* was shown to be processed autocatalytically to generate two daughter proteins with molecular masses of 33 and 23 kD as examined by SDS-PAGE. The active site motif of aspartic proteinases, Asp-Ser-Gly, was present in the 23 kD protein corresponding to the C-terminal half of the precursor protein. The coding region of this daughter protein (152 residues) in the *copia gag* gene was expressed in *E. coli* to produce the recombinant enzyme protein as inclusion bodies, which was then purified and refolded to the active enzyme. Using the peptide substrate His-Gly-Ile-Ala-Phe-Met-Val-Lys-Glu-Val-Asn (cleavage site: Phe-Met) designed based on the sequence of the cleavage site region of the precursor protein, enzymatic properties of the proteinase were investigated. The optimum pH and temperature of the proteinase toward the synthetic peptide were 4.0 and 70 °C, respectively. The proteolytic activity was increased with increasing NaCl concentration in the reaction mixture, the optimum concentration being 2M. Pepstatin A strongly inhibited the enzyme with a  $K_i$  value of 15 nM at pH 4.0. On the other hand, the active site residue mutant, in which the putative catalytic aspartic acid was mutated to an alanine, had no activity. These results show that the *copia* proteinase belongs to the family of aspartic proteinases including HIV proteinase. The B chain of oxidized bovine insulin was hydrolyzed at the Leu<sup>15</sup>-Tyr<sup>16</sup> bond fairly selectively. Thus, the recombinant *copia* proteinase partially resembles HIV proteinase, but is significantly different from it in certain aspects.

Keywords: aspartic proteinase, autocatalytic processing, *copia* proteinase, *Drosophila melanogaster*, recombinant proteinase, retrotransposon.

The retroviral proteinases (retropepsins), including HIV proteinase, share the common conserved active site motif Asp-Ser/Thr-Gly with the ordinary aspartic proteinases [1]. The same amino acid sequence, Asp-Ser-Gly, was also reported to be present in several retrovirus-like transposon elements, such as the *Drosophila copia*-like element and yeast transposon Ty1 [2]. Similarities in sequence *organization* were also recognized between the *copia*-like element and the aspartic proteinase precursors of vertebrate retroviruses [3-6]. Virus-like particles (VLP) were identified from the *Drosophila melanogaster* cell culture [7]. On the other hand, a 2 kb *copia* RNA was reported to contain sufficient information to make the VLP, probably through autoprocessing of the *copia gag* precursor, in *Drosophila* cultured cells [8]. Furthermore, the precursor protein expressed in *E. coli* was reported to be correctly processed to generate a unique laminate structure, indicating involvement of a proteinase in cleaving the *gag* precursor itself [9]. So far, however, the proteinase responsible for the processing and release of the VLP protein has not been purified and characterized.

In this study, the 50 kD *copia gag* precursor protein expressed in *E. coli* was shown to be processed autocatalytically to give a proteinase-like protein identified on SDS-PAGE, and the processing site in the protein was determined by NH<sub>2</sub>-terminal amino acid sequencing. In order to isolate and characterize the proteinase-like protein, its coding region was expressed in *E. coli*, and the recombinant protein was purified from the inclusion bodies and refolded to the active enzyme (called *copia* proteinase in this study; *MEROPS name*: copia transposon (*Drosophila* type) peptidase; *MEROPS classification*: peptidase A11.001). Enzymatic properties of the recombinant proteinase were partially similar to those of retroviral aspartic proteinases, but significantly different from them in certain aspects. To our knowledge, this is the first time that a retrotransposon proteinase has been expressed, purified and characterized.

## EXPERIMENTAL

### Materials

Restriction nucleases, T4 polynucleotide kinase and T4 DNA ligase were purchased from TOYOBO. The *Nco*I linker (5'- CAGCCATGGCTG-3'), the expression vector pKK233-2, *E. coli* JM 109 and Sephacryl S-200 were obtained from Pharmacia. DEAE cellulose (DE-52) was obtained from Whatman and polyvinylidene difluoride

membrane from Millipore. A synthetic peptide, His-Gly-Ile-Ala-Phe-Met-Val-Lys-Glu-Val-Asn, containing the sequence at the putative processing site (Met<sup>274</sup>-Val<sup>275</sup>) of the 50 kD precursor protein was synthesized by using Applied Biosystems peptide synthesizer model 431 A and purified by HPLC. Its purity and sequence was confirmed by amino acid sequencing.

### **Plasmid construction and expression**

To express the entire open reading frame (ORF) of the 2 kb RNA (termed ORF2) in *E. coli*, the plasmid pEC1 [9] was used as a starting material. To express the enzyme protein, the dinucleotide sequence (TpT) near the first methionine codon in the processing site (Met<sup>274</sup>-Val<sup>275</sup>) of ORF2 was converted to CpC using oligonucleotide GCATTGCGTCCATGGTAAAA in order to create a *NcoI* site. The *HpaI* site located in the downstream of ORF 2 was changed using the *NcoI* linker. The resulting 0.57 kb *NcoI* fragment (which covers the proteinase region of ORF2) was inserted into the *NcoI* site of the expression vector pKK233-2 to obtain the plasmid pEC3. Plasmid pEC16 was constructed in the same manner as pEC3 except for the site which harbors the GAT-GCT mutation responsible for the Asp→Ala mutation at the putative active site motif (Asp-Ser-Gly).

*E. coli* containing each expression plasmid was grown in L-broth at 37 °C until the mid log phase (OD<sub>600</sub> = 0.5 - 0.7), then gene expression was induced by the addition of isopropyl-β-D-thiogalactoside to a final concentration of 50 µg/ml. The bacteria were further grown at 37 °C for 6 - 8 h unless otherwise specified and the cells were collected and stored at - 80 °C.

### **Production of antibodies against the enzyme protein**

The recombinant enzyme protein was eluted from the SDS-PAGE gels of the extract of *E. coli* cells with pEC1 plasmid by electroelution. The purified protein was emulsified with Freund's complete adjuvant and injected intradermally into two rabbits. After four weeks rabbits were boosted with the protein several times until a satisfactory antibody titer was obtained as judged by Western blot analysis.

### **Western blotting**

Samples were submitted to SDS-PAGE on 12% acrylamide gels [10] and electroblotted

onto polyvinylidene difluoride membrane. Protein bands were stained using a VECTASTAIN ABC immunochemical staining kit (Vector Laboratories, Burlingame, CA, U.S.A.).

#### **Amino acid sequence analysis**

Proteins in the SDS-PAGE gel were electroblotted onto polyvinylidene difluoride membrane with 10 mM 3-(cyclohexylamino)-1-propanesulphonic acid buffer, pH 11, and the membrane was stained with Coomassie Brilliant Blue R-250. Protein bands corresponding to 50, 33 and 23 kD were cut out and submitted to sequencing using Applied Biosystems pulse-liquid protein sequencer model 477/120A.

#### **Isolation and purification of the enzyme protein**

Bacterial cells from 4 litre culture were suspended in 280 ml of 50 mM Tris-HCl, pH 8.0, containing 1 mM EDTA, 1 mM PMSF, and 1 mg/ml lysozyme. It was incubated for 15 min at 25 °C, and placed on ice for 10 min. Cells were disrupted by sonication with three 20 sec bursts at 4 °C and the resulting cell lysate was centrifuged at 3000 g. The pellet containing inclusion bodies was suspended in 560 ml of 50mM Tris-HCl, pH 8.0, containing 1mM EDTA, 1mM PMSF, 100 mM NaCl and 0.5 % Triton X-100. The resulting suspension was centrifuged at 30000 g for 30 min and the pellet was resuspended in 280 ml of 0.1 M Tris-HCl buffer, pH 8.5, containing 1 mM EDTA, 1mM PMSF and 2 M urea. The suspension was centrifuged at 30000 g for 30 min to collect the pellet. The pellet was dissolved in 200 ml of 0.5 M Tris-HCl, pH 8.0, 1 mM EDTA, 1 mM PMSF and 6 M urea by homogenization. The resulting homogenate was centrifuged at 30000 g for 30 min and the clear supernatant was dialysed against 5 liters of buffer A (20 mM MOPS, pH 8.0, 1 mM EDTA, 1 mM PMSF, 30 mM 2-mercaptoethanol and 6 M urea).

The dialyzed supernatant was applied to a DEAE-cellulose column (2.8 x 32 cm) equilibrated with buffer A and the column was washed with 2 litres of the same buffer. Protein was eluted with a linear gradient of 0 - 0.75M NaCl in a total volume of 1 litre of buffer A. Fractions with absorbance at 280 nm were subjected to SDS-PAGE and those with the 23 kD protein were identified by Western blotting followed by immunochemical staining. The fractions containing the 23 kD protein were pooled, dialysed against 4 litres of buffer A and concentrated by using a small DEAE-cellulose

(DE-52) column (1.0 x 1.0 cm). A 10-ml aliquot of the concentrated sample was gel-filtered on a Sephacryl S-200 column (3.1 x 145 cm) equilibrated with buffer A containing 0.2 M NaCl. Fractions were analysed by SDS-PAGE followed by Western blot analysis and the major fractions containing the 23 kD protein were pooled and stored at 4°C.

A 10-ml aliquot of the above pooled Sephacryl S-200 fraction was diluted with buffer A to a final protein concentration of 0.08 mg/ml and dialysed against 1 litre of 50 mM sodium acetate buffer, pH 5.5, containing 10% glycerol, 5% ethylene glycol, 0.02% Nonidet p40, 1 mM EDTA and 30 mM 2-mercaptoethanol at 4 °C for 24 h. The dialysed sample was centrifuged at 100000 g and 4 °C for 60 min. The resulting supernatant was further dialysed successively against 1 litre each of 50 mM sodium acetate buffer, pH 5.5, containing 30, 20 and 10 mM 2-mercaptoethanol and centrifuged at 100000 g for 120 min. The dialysed sample was gel-filtered on a Tosoh TSKgel G3000 SW column (0.75 x 60 cm) equilibrated with 50 mM sodium acetate buffer, pH 5.5. Each fraction was analysed by SDS-PAGE and immuno-blotting using the antiserum against the 23 kD protein.

#### **Determination of proteolytic activity**

Unless otherwise specified, 50 µl of 1 mM synthetic peptide in 0.05 M sodium acetate buffer, pH 5.5, containing 1 mM dithiothreitol (DTT) and 0.2 M NaCl was mixed with 10 µl of the refolded proteinase solution and incubated at 37 °C for 30 min. The reaction was terminated by the addition of 240 µl of 5% trifluoroacetic acid and freezing. The reaction products were analyzed by HPLC using an ODS-032 (ABI) column with a linear gradient of 0 - 52.5% acetonitrile in 20 min at a flow rate of 1 ml/min. Absorbance of the effluent was monitored at 215 nm and the cleavage products were identified by amino acid analysis and sequencing.

The pH dependence of activity was analyzed as follows. 120 µl of 1 mM synthetic peptide in 20 mM formate, 20 mM acetate, 10 mM methanesulfonate or 40 mM Tris buffer at different pH values containing 1mM DTT were incubated with 0.4 µg of the refolded proteinase at 37 °C for 30 min. The reaction was stopped by the addition of 480 µl of 5% trifluoroacetic acid and the extent of peptide cleavage was analysed by HPLC as described above. The temperature dependence of activity was analysed in the same manner except that the assay was performed in 50 mM sodium acetate buffer, pH 4.0, (1

mM DTT) at various temperatures. The effect of NaCl concentration on activity was analyzed in the same manner except that the assay was performed in 200 mM sodium acetate buffer, pH 4.0, (1 mM DTT) at 37 °C at various concentrations of NaCl (0 - 5 M). The effects of various inhibitors on activity were analysed in the same manner except that the assay was performed in 100 mM sodium acetate buffer, pH 4.0, (1 mM DTT, 0.2 M NaCl) at 37 °C in the presence of each inhibitor after preincubation at 37 °C for 30 min.

The activity toward hemoglobin was determined as described [11].

### **Measurements of stability of the proteinase**

To measure the thermal stability, 1 µg of the recombinant proteinase in 50 µl of 0.1 M sodium acetate buffer, pH 4.0, (1 mM DTT) was incubated at different temperatures for 1 h and the remaining activity was determined under the standard assay conditions. To measure the stability at pH 7.4, about 15 µg of the proteinase in 1.5 ml of 0.05 M Tris-HCl, pH 7.4, 1 mM DTT was incubated at 37 °C. Aliquots were withdrawn at different time intervals and the remaining activity was determined under the standard assay conditions.

### **Reaction of diazoacetyl-D,L-norleucine methyl ester (DAN) with the proteinase**

The proteinase (8 µg) was incubated with 50 µg of DAN in 0.8 ml of 0.05 M sodium phosphate buffer, pH 6.0, at 25 °C in the presence and absence of 1 mM cupric sulfate. Aliquots were removed at appropriate intervals and the remaining activity was determined.

### **Analysis of the cleavage specificity of the proteinase toward the B chain of oxidized insulin**

The B chain of oxidized insulin (100 nmol) was digested with 8 µg of the proteinase in 300 µl of 0.05 M sodium acetate buffer, pH 4.0, containing 1 mM DTT and 0.2 M NaCl. Aliquots of 100 µl were removed at appropriate time intervals and submitted to HPLC using a Hitachi 655A-11 system on a column (0.46 x 25 cm) of TSKgel ODS-120T (Tosoh Co.). The peptides were eluted with a linear gradient of acetonitrile (0 to 50%) in 30 min in 0.1% trifluoroacetic acid at a flow rate of 0.8 ml/min. The effluent was monitored by measuring the absorbance at 215 nm and the peptide peak fractions were



collected and lyophilized. An aliquot of each peptide fraction dissolved in water was submitted to amino acid analysis using an Applied Biosystems automated derivatizer-analyzer (420A/130A).

## RESULTS

### Identification of the proteolytic processing site in the *copia gag* precursor protein

During the cultivation of *E. coli* containing the pEC1 plasmid, the intensities of three protein bands (bands I, II and III) were shown to increase as analysed by SDS-PAGE, corresponding to apparent molecular masses of 50, 33 and 23 kD, respectively (Fig. 1a). The band I and II proteins were stained with an anti-VLP antiserum, whereas the band III protein was not (Fig. 1b). This indicated that the 50 kD gag precursor protein was expressed and then processed into the 33 and 23 kD daughter proteins.

The NH<sub>2</sub>-terminal amino acid sequences of these proteins were determined as shown below.

Band I protein: Met-Asp-Lys-Ala-Lys-Arg-Asn-Ile-Lys-Pro-

Band II protein: Met-Asp-Lys-Ala-Lys-Arg-Asn-Ile-Lys-Pro-

Band III protein: Val-Lys-Glu-Val-Asn-Asn-Thr-Ser-Val-Met-Asp-Asn-Cys-Gly-Phe-

The NH<sub>2</sub>-terminal sequences of the band I and II proteins were the same, which were identical with that deduced from the DNA sequence of the *gag* precursor. On the other hand, the NH<sub>2</sub>-terminal 15-residue sequence of the band III protein was identical with the sequence from Val<sup>275</sup> to Phe<sup>289</sup> of the deduced sequence of the precursor *gag* protein. These results confirmed that the band II and III proteins were produced from the expressed band I precursor *gag* protein, through cleavage at the Met<sup>274</sup>-Val<sup>275</sup> bond. The putative active site motif of aspartic proteinases, Asp-Ser-Gly, was present in the band III protein and an antiserum raised against this protein reacted with the band I precursor protein, but not with the band II protein. These findings suggest that the band III protein may be a proteinase and responsible for the observed processing of the *gag* precursor protein. The soluble fraction of a crude extract of *E. coli* cells harbouring the pEC1 plasmid, however, showed no significant activity toward the synthetic peptide substrate.

### **Expression, isolation, and purification of the enzyme protein**

The region coding for the band III protein was obtained from the *copia* pZY2 (8) and inserted into the pKK233-2, and the resulting pEC3 plasmid was expressed in *E. coli*. The increase in intensity of the corresponding protein band was observed with the isopropyl- $\beta$ -D-thiogalactoside induction up to 8 h (Fig. 1c) and only this band reacted with the antiserum raised against the band III protein (Fig. 1d). The protein expressed in 1 litre of the *E. coli* cell culture was around 25 mg at 8 h after the induction as estimated by SDS-PAGE.

Ninety percent of the enzyme protein present in the purified inclusion body pellet was solubilized in the buffer containing 6 - 8 M urea and 30 mM 2-mercaptoethanol. The enzyme protein was purified by successive steps of chromatography on DEAE-cellulose and Sephacryl S-200 gel filtration (Figs. 2a and 2b). The purity of the fractions was analyzed by SDS-PAGE. Fractions 54 to 60 in Sephacryl S-200 gel filtration were the major fractions containing the enzyme protein (Fig. 2d). Thus, about 25 mg of the purified protein was obtained from 100 mg of the expressed protein in 4 litres of the *E. coli* cell culture.

The enzyme protein was then refolded to the proper conformation with proteolytic activity by gradually removing urea (from 6 M to 0 M) followed by stepwise removal of 2-mercaptoethanol (from 30 to 20 mM and then from 20 to 10 mM). After refolding, the insoluble unfolded protein was removed by centrifugation at 100000 g for 1 h, and the refolded proteinase was purified by gel filtration on a TSKgel G3000SW column (Fig. 2c). The purified refolded enzyme gave a single band on SDS-PAGE (Fig. 2e). Its molecular mass was estimated to be 23 kD by SDS-PAGE under both reducing and non-reducing conditions and by gel filtration (data not shown).

### **Development of an assay procedure to characterize the *copia* proteinase**

A synthetic 11-residue peptide, His-Gly-Ile-Ala-Phe-Met-Val-Lys-Glu-Val-Asn, corresponding to the sequence at the processing site and its vicinity of the *gag* precursor protein was synthesized and used as the substrate. A typical HPLC analysis of the reaction mixture is shown in Figs. 3a and 3b; the peak height of the intact peptide was decreased with time and two new peaks appeared. They were identified to be His-Gly-Ile-Ala-Phe and Met-Val-Lys-Glu-Val-Asn by amino acid sequencing. The

increases in height of these peaks were linear up to 60 min (Fig. 3c) at a saturating substrate concentration (around 1 mM) (Fig. 4a). Therefore, a 30 - 60 min incubation period was used to determine the activity of the proteinase.

### Enzymatic properties of the proteinase

The  $K_m$  and  $V_{max}$  values of the proteinase toward the synthetic peptide at pH 5.5 and 37 °C were estimated to be 235  $\mu\text{M}$  and 81.3  $\text{pmol} \cdot \text{min}^{-1} \cdot \mu\text{g}^{-1}$ , respectively, by using Lineweaver-Burk plot (Fig. 4b). The pH and temperature dependences of proteolytic activity of the enzyme are shown in Figs. 5a and 5b, respectively. The optimum pH of the activity toward the synthetic peptide was 4.0 (Fig. 5a) and the specific activity at the optimum pH was determined to be 144  $\text{pmol} \cdot \text{min}^{-1} \cdot \mu\text{g}^{-1}$ . Therefore the activity of the enzyme was assayed at pH 4.0 in the subsequent studies unless otherwise specified. On the other hand, the optimum activity toward acid-denatured hemoglobin was observed at pH 2.0 (Fig. 5a). When the assay temperature was elevated, the activity of the enzyme increased up to 70 °C and a sharp decline was observed beyond 70 °C (Fig. 5b). The activity at 37 °C was 69% of that observed at the optimum temperature, 70 °C.

The stability of the enzyme at different temperatures and pH 4.0 and that at pH 7.4 and 37 °C are also shown in Fig. 5. The enzyme was stable up to 50 °C at pH 4.0 and a gradual decrease of activity was observed above 50 °C; the enzyme was completely inactivated after one hour incubation at 85 °C (Fig. 5b). The enzyme was not very stable at pH 7.4 and 37°C and a gradual reduction of activity was observed with incubation time. The half-life was 24 h, and complete inactivation was observed after 48 h (Fig. 5c).

When NaCl was added to the assay mixture, a gradual increase of activity was observed up to 2 M NaCl; the activity was decreased gradually above 2 M NaCl (Fig. 5d). Pepstatin A strongly inhibited the enzyme; a  $K_i$  value of 15 nM was obtained at pH 4.0 by using Dixon plots (Fig. 4c). DAN was shown to inactivate the enzyme to a significant extent in the presence of cupric ions (Fig. 4d). Under the reaction conditions used in the presence of 1 mM  $\text{Cu}^{2+}$ , the activity was lost by 50% in 2 h and decreased further upon longer incubation. In the absence of cupric ions, no significant inactivation took place. On the other hand, no inhibition was observed with any of the following inhibitors for serine, cysteine, or metallo-peptidases or aminopeptidases at the

given concentrations: diisopropylfluorophosphate (0.1 mM), PMSF (1 mM), tosyl-L-phenylalanine chloromethyl ketone (1 mM), 1-*trans*-epoxysuccinyl-L-leucylamido(4-guanidino)butane (0.1 mM), *o*-phenanthroline (10 mM), EDTA (10 mM), soybean trypsin inhibitor (0.1 µg/ml), leupeptin (0.1 mM), antipain (0.1 mM), amastatin (0.1 mM) and diprotinin A (0.05 mM).

The cleavage profile of the enzyme toward the B chain of oxidized insulin at pH 4.0 is shown in Fig. 6. The Leu<sup>15</sup>-Tyr<sup>16</sup> bond was cleaved fairly selectively, followed by slower cleavages at the Tyr<sup>16</sup>-Leu<sup>17</sup>, Glu<sup>13</sup>-Ala<sup>14</sup>, Glu<sup>21</sup>-Arg<sup>22</sup>, and Phe<sup>25</sup>-Tyr<sup>26</sup> in a decreasing order.

### Loss of the proteolytic activity by active site residue mutation

The mutant enzyme in which the putative catalytic residue Asp<sup>18</sup> was changed to Ala was expressed in *E. coli* cells containing the pEC16 plasmid, purified and refolded by essentially the same procedures as used for the wild type enzyme. The expression yield and the elution profiles on chromatography of the mutant protein were practically the same as those of the wild type proteinase. The refolded mutant protein, however, showed no activity toward the synthetic peptide.

## DISCUSSION

As described in the preceding section, when the 2 kb *copia* RNA was expressed in *E. coli* containing the plasmid pEC1, a protein with an apparent molecular mass of 23 kD was shown to be produced, in addition to the 50 kD *gag* precursor protein and the 33 kD VLP protein, which had previously been found by Yoshioka et al. [9]. The NH<sub>2</sub>-terminal amino acid sequencing of these proteins clearly showed the processing of the 50 kD precursor protein to produce the two daughter proteins, which represent the NH<sub>2</sub>- and COOH-terminal halves, respectively, of the 50 kD protein.

Attempts to demonstrate the activity of the *copia* proteinase in the lysate of *E. coli* cells with the plasmid pEC1 toward the synthetic peptide or toward the 50 kD precursor protein obtained from *E. coli* containing the pEC2 plasmid were not successful, presumably due to a very low concentration of the active proteinase in the *E. coli* cell lysate. Thus, direct purification of the enzyme protein from *E. coli* cells with the plasmid pEC1 was difficult; therefore, the coding region of the enzyme protein in the *copia gag* gene was expressed in *E. coli* to obtain a high level of expression.

The simple purification and refolding procedures permitted us to obtain as much as 6.3 mg of the active proteinase from 1 litre of the *E. coli* culture. A selective cleavage of the synthetic peptide (His-Gly-Ile-Ala-Phe-Met-Val-Lys-Glu-Val-Asn) was observed at the Phe<sup>5</sup>-Met<sup>6</sup> bond by the purified proteinase. On the other hand, the NH<sub>2</sub>-terminal amino acid sequence of the enzyme protein from *E. coli* cells containing the plasmid pEC1 started from Val<sup>275</sup> in the sequence -Phe<sup>273</sup>-Met<sup>274</sup>-Val<sup>275</sup>-. These results suggest that the initial processing site in the 50 kD *gag* precursor protein is the Phe<sup>273</sup>-Met<sup>274</sup> bond and that the resulting NH<sub>2</sub>-terminal Met<sup>274</sup> residue was removed presumably by the action of methionyl aminopeptidase present in *E. coli*. Similarly, the removal of the NH<sub>2</sub>-terminal Met residue from the enzyme protein obtained from *E. coli* cells containing the plasmid pEC3 was also observed. The Met residues in the NH<sub>2</sub>-terminal Met-Asp- sequence of the 50 and 33 kD proteins were not removed. It is known that when the next residue has a side chain with a low radius of gyration (Gly, Ala, Ser, Thr, Pro, Val or Cys), the NH<sub>2</sub>-terminal methionine is removed by methionyl aminopeptidase, but otherwise it is retained [12]. The above results are consistent with this specificity of methionyl aminopeptidase.

The ordinary aspartic proteinases are composed of two lobes highly homologous in tertiary structure [1]. Each lobe is composed of a single polypeptide chain of more than 150 residues with a conserved Asp-Thr/Ser-Gly motif constituting the active site of the enzyme. In contrast, retroviral proteinases are generally composed of two identical subunits, and each subunit is composed of less than 130 amino acids and contains only one Asp-Thr/Ser-Gly motif. In the case of HIV proteinase, its subunit was first demonstrated to dimerize to form the active enzyme [13]. Therefore, in analogy to HIV proteinase and other retroviral proteinases, dimerization of the present enzyme protein is thought to be the prerequisite to exhibit proteolytic activity. The actual molecular mass of the proteinase based on its amino acid sequence of 152 residues is 16.7 kD. On the other hand, the active proteinase was eluted at the position of 23 kD on gel filtration. This seems to indicate dimerization of the protein. However, the proteinase was also observed at the 23 kD region on SDS-PAGE under both reducing and non-reducing conditions. This is presumably due to an anomalous behavior of the proteinase subunit on SDS-PAGE to give an apparently higher molecular mass than the theoretical one. Indeed, certain low molecular weight proteins are known to behave anomalously on SDS-PAGE [14]. For examples, ribonuclease A (13.7 kD), ribonuclease T<sub>1</sub> (11.1 kD)

and the heavy chain of aspergillopepsin (18.3 kD) were reported to give molecular masses of 18.5 kD (35% overestimated) [14], 18.0 kD (62% overestimated) [15] and 33.0 kD (80% overestimated) [16], respectively, on SDS-PAGE. The molecular mass of 23 kD estimated by gel filtration is somewhat lower than the theoretical value of 33.4 kD. The reason for this is not certain at present.

The present enzyme had a pH optimum at 4.0 toward the synthetic peptide. This is roughly similar to the result reported for HIV-1 proteinase, which, however, has a broader pH optimum ranging from pH 3.5 to 5.5 toward a synthetic peptide [17]. The optimum pH values for other retroviral proteinases were reported to range from pH 5.5 to 7.2 [18]. Although the present enzyme was shown to act optimally at pH 2.0 toward hemoglobin, this is presumably due to more extensive denaturation of the substrate at lower pH values.

The optimum temperature (70 °C at pH 4.0) of the proteinase was remarkably higher than that of HIV-1 proteinase (37 °C at pH 6.0), which is inactive above 60 °C [17]. The present enzyme was fairly stable up to 50 °C at pH 4.0, and above this temperature it became less stable. On the other hand, human pepsin A was reported to be fairly stable up to 60 °C at pH 5.5, above which it is inactivated rapidly [11]. Taken together, the present enzyme appears to be markedly more stable at higher temperatures than HIV-1 proteinase. The polypeptide chain of HIV-1 proteinase is composed of 99 amino acid residues with the catalytic aspartic acid residue at position 25. On the other hand, that of the present enzyme is composed of 152 residues with the putative catalytic aspartic acid residue at position 18. Therefore, the present enzyme has a longer COOH-terminal tail as compared with HIV-1 proteinase. This tail region might contribute to the stability of the present enzyme. The enzyme was not very stable at pH 7.4, but was relatively more stable than ordinary aspartic proteinases. For example, human pepsin A is rapidly inactivated at pH 7.0 and 37 °C; the half-life is about 1 min and is almost completely inactivated within 10 min [11]. The structural basis for this stability of the present enzyme remains to be elucidated.

The enzyme was inhibited by the two aspartic proteinase-specific inhibitors, pepstatin A and DAN. Pepstatin A inhibited the enzyme with a  $K_i$  value of 15 nM. On the other hand, HIV-1 proteinase was reported to be inhibited by pepstatin A with a  $K_i$  value of 1.1  $\mu$ M at pH 5.5 [19] or with an  $IC_{50}$  values of 700 nM at pH 6.0 [20] and 360 nM at pH 5.5 [21]. The  $IC_{50}$  values for other retrovirus proteinases were reported to be

in the range 100 – 500 nM [22]. Therefore, the present enzyme is more sensitive to pepstatin A than retrovirus proteinases, although much less sensitive than ordinary aspartic proteinases such as porcine pepsin ( $K_i=0.05$  nM at pH 5.0 [23]). The enzyme was also inactivated by DAN in the presence of cupric ions although the rate of inactivation appeared to be somewhat slower than those of ordinary aspartic proteinases. Moreover, the enzyme was not inhibited by any of the proteinase inhibitors tested except for pepstatin A and DAN, and the mutant (Asp<sup>18</sup>→Ala) enzyme had no activity. These results are consistent with the notion that the enzyme is a member of the aspartic proteinase family.

The processing site of the *gag* precursor protein was deduced to be the Phe<sup>273</sup>-Met<sup>274</sup> bond. On the other hand, the enzyme cleaved most rapidly the Leu<sup>15</sup>-Tyr<sup>16</sup> bond in the B chain of oxidized insulin, with slower cleavages at four other peptide bonds, Tyr<sup>16</sup>-Leu<sup>17</sup>, Glu<sup>13</sup>-Ala<sup>14</sup>, Glu<sup>21</sup>-Arg<sup>22</sup>, and Phe<sup>25</sup>-Tyr<sup>26</sup> in a decreasing order. Thus, the enzyme appears to prefer certain hydrophobic or aromatic or glutamic acid residue at the P1 position. These results indicate that the specificity of the enzyme is not restricted to the peptide bond at the processing site of the *copia gag* precursor as in the cases of other retroviral proteinases [24]. The cleavage specificity toward oxidized insulin B chain is fairly different from that of HIV-1 proteinase, which was reported to cleave the Glu<sup>13</sup>-Ala<sup>14</sup> bond most rapidly, followed by the Tyr<sup>16</sup>-Leu<sup>17</sup> bond, with slower cleavages at the Leu<sup>11</sup>-Val<sup>12</sup> and Leu<sup>15</sup>-Tyr<sup>16</sup> bonds [25]. Since the Leu<sup>15</sup>-Tyr<sup>16</sup> bond is also one of the major cleavage sites by several ordinary aspartic proteinases [26], the cleavage specificity of the present enzyme toward oxidized insulin B chain is similar, though not identical, to those of ordinary aspartic proteinases.

To shed further light on the structure/function relationship of the present enzyme, it would be essential to elucidate its three-dimensional structure.

#### ACKNOWLEDGEMENTS

This study was supported in part by grants-in-aid from the Ministry of Education, Culture, Sports, Science and Technology of Japan.

#### REFERENCES

1. Rawlings, N.D. and Barrett, A.J. (1995) Families of aspartic peptidases. *Methods in*

- Enzymol. **248**, 105-120
2. Rinckel, L.A. and Garfinkel, D.J. (1998) Fungal, plant and animal transposon elements. In: Handbook of Proteolytic Enzymes 2<sup>nd</sup> ed. Vol. 1 (Barrett, A.J., Rawlings, N.D. and Woessner, J.F., eds.) pp. 190-195, Elsevier Academic Press, London
  3. Shiba, T. and Saigo, K. (1983) Retrovirus-like particles containing RNA homologous to the transposable element *copia* in *Drosophila melongaster*. Nature **302**, 119-124
  4. Lewis, R., Dunsmuir, P. and Rubin, G.M. (1980) Terminal repeats of the *Drosophila* transposable element *copia*: nucleotide sequence and genomic organization. Cell **21**, 581-588
  5. Bayev, A.A., Krayev, A.S., Lyubomirskaya, N.V., Ilyin, Y., Skryabin, K.G. and Georgiev, G.P. (1980) The transposable element Mdg3 in *Drosophila melanogaster* is flanked with the perfect direct and mismatched inverted repeats. Nucleic Acids Res. **8**, 3263-3273
  6. Flavell, A.J., Ruby, S.W., Toole, J.J., Roberts, B.E. and Rubin, G.M. (1980) Translation and developmental regulation of RNA encoded by the eukaryotic transposable element *copia*. Proc. Natl. Acad. Sci. USA **77**, 7107-7111
  7. Heine, C.W., Kelly, D.C. and Avery, R.J. (1980) The detection of intracellular retrovirus-like entities in *Drosophila melanogaster* cell cultures. J. Gen. Virol. **49**, 385-395
  8. Yoshioka, K., Homma, H., Zushi, M., Kondo, S., Togashi, S., Miyake, T. and Shiba T. (1990) Virus-like particle formation of *Drosophila copia* through autocatalytic processing. EMBO J. **9**, 535-541
  9. Yoshioka, K., Kanda, H., Kondo, S., Togashi, S., Miyake, T. and Shiba, T. (1991) Autoprocessing of *Drosophila copia gag* precursor to generate a unique laminate structure in *Escherchia coli*. FEBS Lett., **285**, 31-34
  10. Laemmli, U.K. (1970) Cleavage of structural proteins during the assembly of the head of Bactriophage T<sub>4</sub>. Nature **227**, 680-685
  11. Athauda, S.B.P., Tanji M., Kageyama, T. and Takahashi, K. (1989) A comparative study on the NH<sub>2</sub>-terminal amino acid sequences and some other properties of six isozymic forms of human pepsinogens and pepsins. J. Biochem. **106**, 920-927
  12. Hirel, P.-H., Schmitter, J.-M., Dessen, P., Fayat, G. and Blanquet, S. (1989) Extent



- of N-terminal methionine excision from *Escherichia coli* proteins is governed by side-chain length of the penultimate amino acid. Proc. Natl. Acad. Sci. USA **86**, 8247-8251
13. Meek, T.D., Dayton, B.D., Metcalf, B.W., Dreyer, G.B., Strickler, J.E., Gorniak, J.G., Rosenberg, M., Moore, M.L., Magaard, V.W. and Debouck, C. (1989) Human immunodeficiency virus 1 protease expressed in *Escherichia coli* behave as a dimeric aspartic protease . Proc. Natl. Acad. Sci. USA **86**, 1841-1845
  14. Dunker, A.K. and Rueckert, R.R. (1969) Observations on molecular weight determinations on polyacrylamide gel. J. Biol. Chem. **244**, 5074-5080
  15. Fields, R., Dixon, H. B. F. and Law, G.R. (1971) Purification of ribonuclease T1 by diethylaminoethylcellulose chromatography. Biochem. J. **121**, 591-596
  16. Takahashi, K. (1995) Proteinase A from *Aspergillus niger*. Methods in Enzymol. **248**,146-155
  17. Billich, S., Knoop M.T., Hansen, J., Strop, P., Sedlacek, J., Mertz, R. and Moelling, K.(1988) Synthetic peptides as substrates and inhibitors of human immunodeficiency virus-1 protease. J. Biol. Chem. **263**, 17905-17908
  18. Yoshinaka, Y., Katoh, I., Copeland, T., Smythers, G. and Oroszlan, S. (1986) Bovine leukemia virus protease: purification, chemical analysis, and *in vitro* processing of gag precursor polyproteins. J. Virol. **57**, 826-832
  19. Darke, P.L., Leu, C.-T., Davis, L.J., Heimbach, J.C., Diehl, R.E., Hill, W.S., Dixon, R.A. and Sigal, I.S. (1989) Human immunodeficiency virus protease. Bacterial expression and characterization of the purified aspartic protease. J. Biol. Chem. **264**, 2307-2312
  20. Krausslich, H.G., Ingraham, R.H., Skoog, M.T., Wimmer, E., Pallai P.V. and Carter, C.A. (1989) Activity of purified biosynthetic proteinase of human immunodeficiency virus on natural substrates and synthetic peptides. Proc. Natl. Acad. Sci. USA, **86**, 807-811
  21. Cook, N.D., Jessop, R.A., Robinson, R.S., Richards, A.D. and Kay, J. (1991) Scintillation proximity assay. A rapid and novel assay technique applied to HIV proteinase. In: Structure and Function of the Aspartic Proteinases. Genetics, Structures, and Mechanisms (Dunn, M.B., ed.) pp. 525-528, Plenum Press, New York

22. Katoh, I., Yasunaga, T., Ikawa, Y. and Yoshinaka, Y.(1987) Inhibition of retroviral protease activity by an aspartyl proteinase inhibitor. *Nature* **329**, 654-656
23. Workman, R.J. and Burkitt, D.W. (1979) Pepsin inhibition by a high specific activity radioiodinated derivative of pepstatin. *Arch. Biochem. Biophys.* **194**, 157-164
24. Moore, M.L., Bryan, W.M., Fakhoury, S.A., Maggard, V.W., Huffman W.F., Dayton,B.D., Meek, T.D., Hyland, L., Dreyer, G.B., Metcalf, B.W., Stricler, J.E., Gorniak, J.G., and Debouck, C. (1989) Peptide substrates and inhibitors of HIV-1 proteinase. *Biochem. Biophys. Res. Comm.* **159**, 420-425.
25. Tomasselli, A.G., Hui, J.O., Sawyer, T.K., Thaisrivongs, S., Hester, J.B. and Heinrickson, R.L. (1991) In: *Structure and Function of the Aspartic Proteinases. Genetics, Structures, and Mechanisms* (Dunn, M.B., ed.) pp. 469-481, Plenum Press,New York
26. Athauda, S.B.P. and Takahashi, K. (2002) Cleavage specificities of aspartic proteinases toward oxidized insulin B chain at different pH values. *Protein, Peptide Lett.* **9**, 289-294

Legends to Figures

**Figure 1** Time course of processing of the wild-type *copia gag* precursor expressed in *E. coli* with pEC1 (a and b) and that of expression of the 23-kD protein (*copia* proteinase) in *E. coli* with pEC3 (c and d) as analyzed by SDS-PAGE (a and c) and Western blot analysis (b and d). At the indicated times after addition of isopropyl- $\beta$ -D-thiogalactoside, the cells ( $2 \times 10^7$ ) were lysed in 10  $\mu$ l of the lysis buffer, and the resulting lysates were submitted to SDS-PAGE and immuno-blot analysis using an anti-VLP serum (b) or an anti-serum against the 23-kD protein obtained from *E. coli* with pEC1 (d). Approximate molecular masses are also shown for standard marker proteins: phosphorylase B (97.4 kD), bovine serum albumin (66.2 kD), ovalbumin (45.0 kD), carbonic anhydrase (31.0 kD), soybean trypsin inhibitor (21.5 kD) and lysozyme (14.4 kD).

**Figure 2** Isolation and purification of the 23 kD protein (*copia* proteinase) expressed in *E. coli* with pEC3. (a) DEAE-cellulose chromatography. The solution of the solubilized inclusion body from *E. coli* with pEC3 was applied to a DEAE-cellulose column (2.8 x 32 cm) at pH 7.9 and eluted with a linear gradient of 0 to 0.75 M NaCl in a total volume of 1 litre. The fraction size was 7.5 ml. (b) Sephacryl G-200 chromatography. The pooled fraction from the DEAE-cellulose chromatography was concentrated and applied to a Sephacryl S-200 column (3 x 145 cm) at pH 7.9. Fraction size, 7.5 ml. (c) TSKgel G3000 SW chromatography. The pooled fraction from the Sephacryl S-200 column was submitted to the refolding procedure, and then applied to a TSKgel G3000 SW column at pH 5.5. Arrows indicate the elution positions of standard proteins: 1, bovine serum albumin; 2, ovalbumin; 3, soybean trypsin inhibitor; 4, lysozyme. (d) SDS-PAGE of Sephacryl S-200 fractions. (e) SDS-PAGE of the pooled TSKgel G3000SW fraction. The same standard marker proteins were used in (d) and (e) as used in Fig. 1. In each chromatography the fractions under the bar were pooled. The numbers above the gel in SDS-PAGE (d) indicate fraction numbers.

**Figure 3** HPLC assay for *copia* proteinase using the synthetic peptide His-Gly-Ile-Ala-Phe-Met-Val-Lys-Glu-Val-Asn as a substrate. (a) HPLC of the intact peptide. (b) HPLC of a 1-h digest of the peptide. (c) Time course of the peptide hydrolysis. Peptides are shown in single letter notation.

**Figure 4** Effects of substrate concentration and inhibitors on the activity of *colpia* proteinase. (a) The initial rates of hydrolysis were measured at various concentrations of substrate. (b) Lineweaver-Burk plot of the data in (a). (c) Dixon plot for pepstatin inhibition. (d) Time courses of changes in activity by reaction with DAN were measured in the presence (●) and absence (○) of 1 mM cupric ions.

**Figure 5** Effects of various factors on the activity of *colpia* proteinase. (a) Effect of pH on the activity toward the synthetic substrate (●) and hemoglobin (○). (b) Effects of temperature on the activity (●) and stability (○). To measure the stability, the enzyme was preincubated for 1 h at different temperatures, then assayed at 37°C. (c) Effect of incubation at pH 7.0 on the activity. (d) Effect of NaCl concentration on the activity.

**Figure 6** Cleavage specificity of *colpia* proteinase toward oxidized insulin B chain. (a) HPLC pattern of a 3-h digest of oxidized insulin B chain. The number on each peak indicates the residue positions of the peptide in the substrate. (b) Yields of peptides and sites of cleavage. Arrowheads indicate the cleavage sites and the number under each arrowhead shows estimated extent of cleavage in per cent. Bars indicate peptide fragments produced and the number in each bar shows the per cent yield of the peptide.

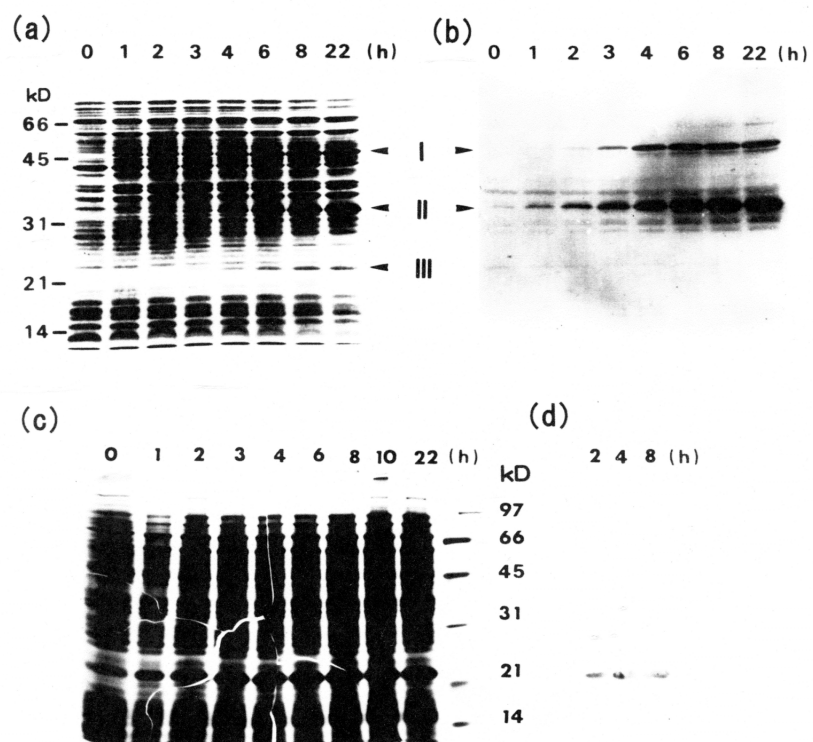


Fig. 1

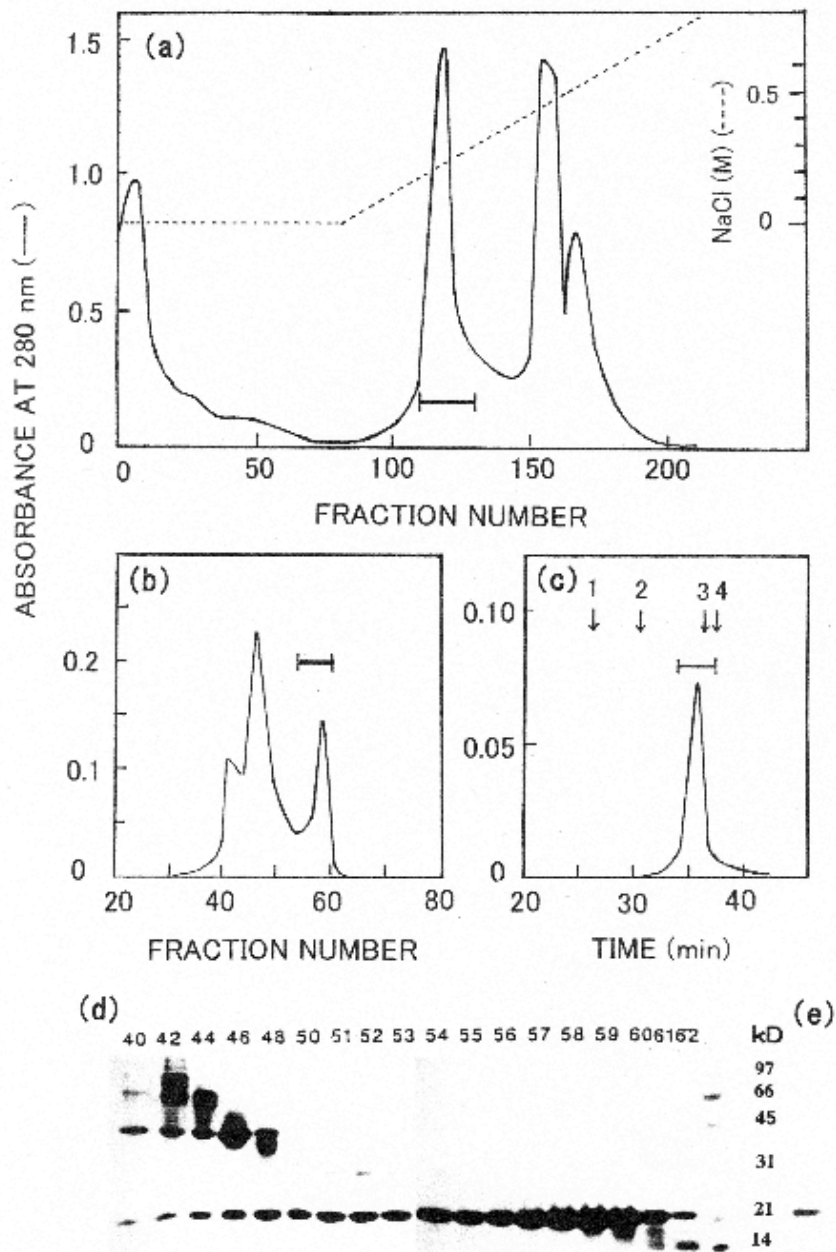


Fig. 2

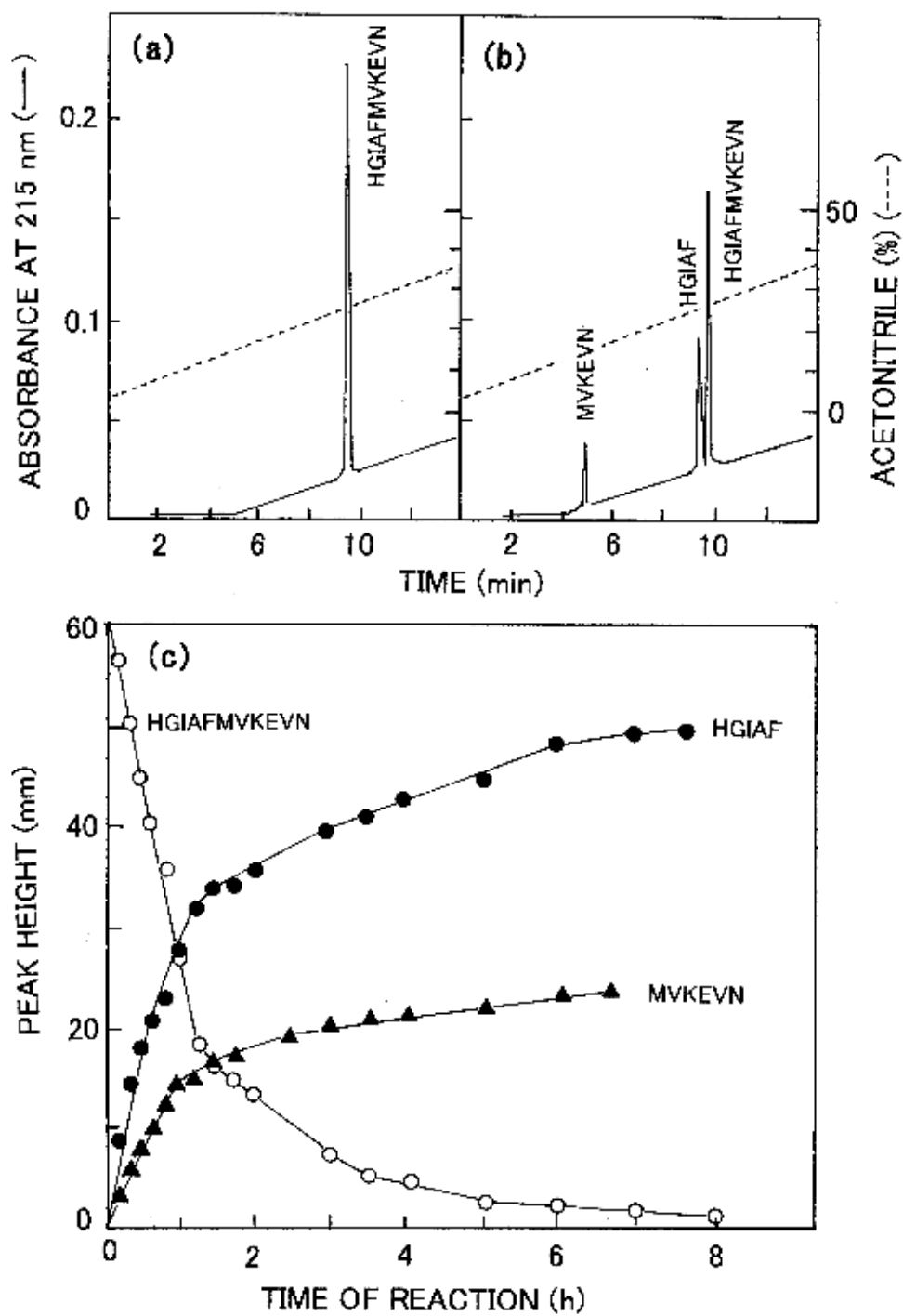


Fig. 3

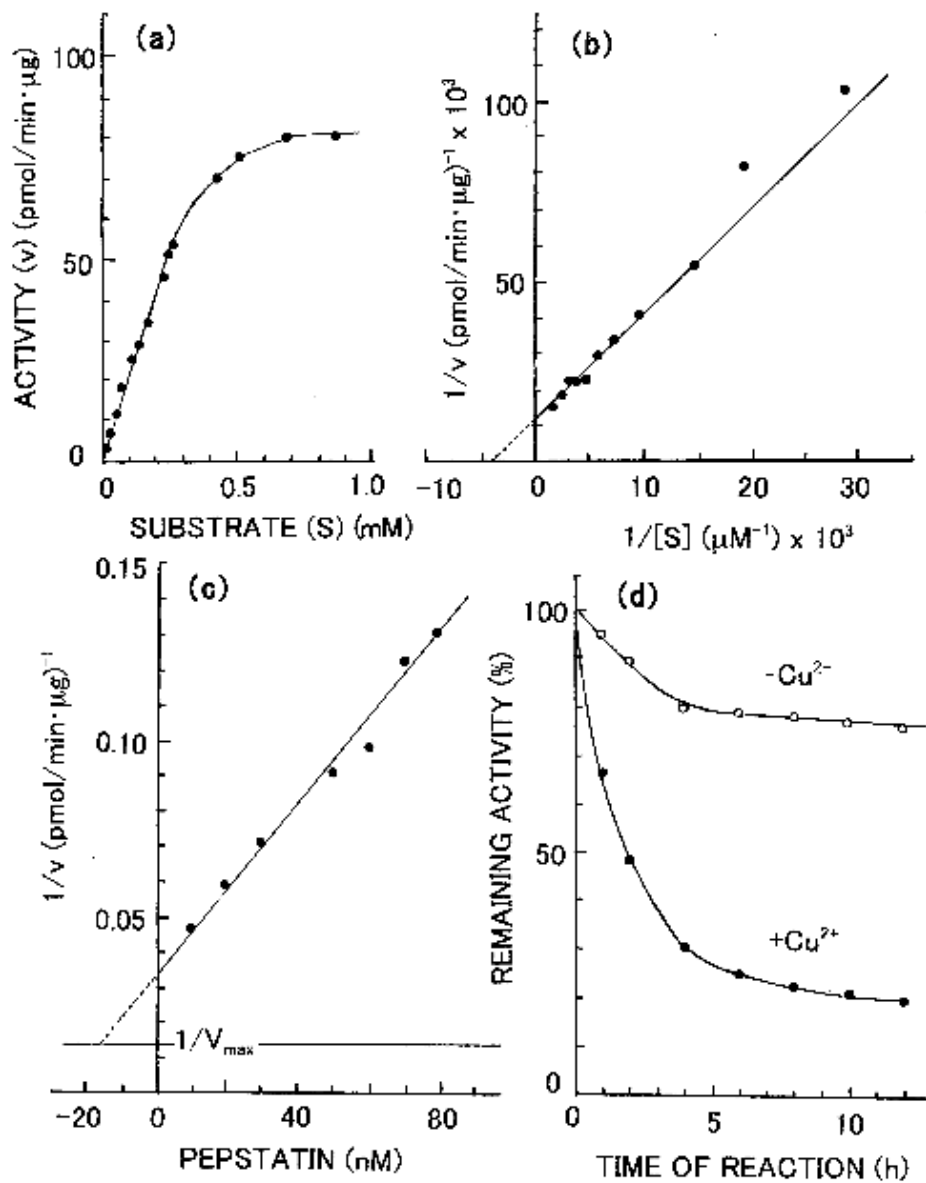


Fig. 4



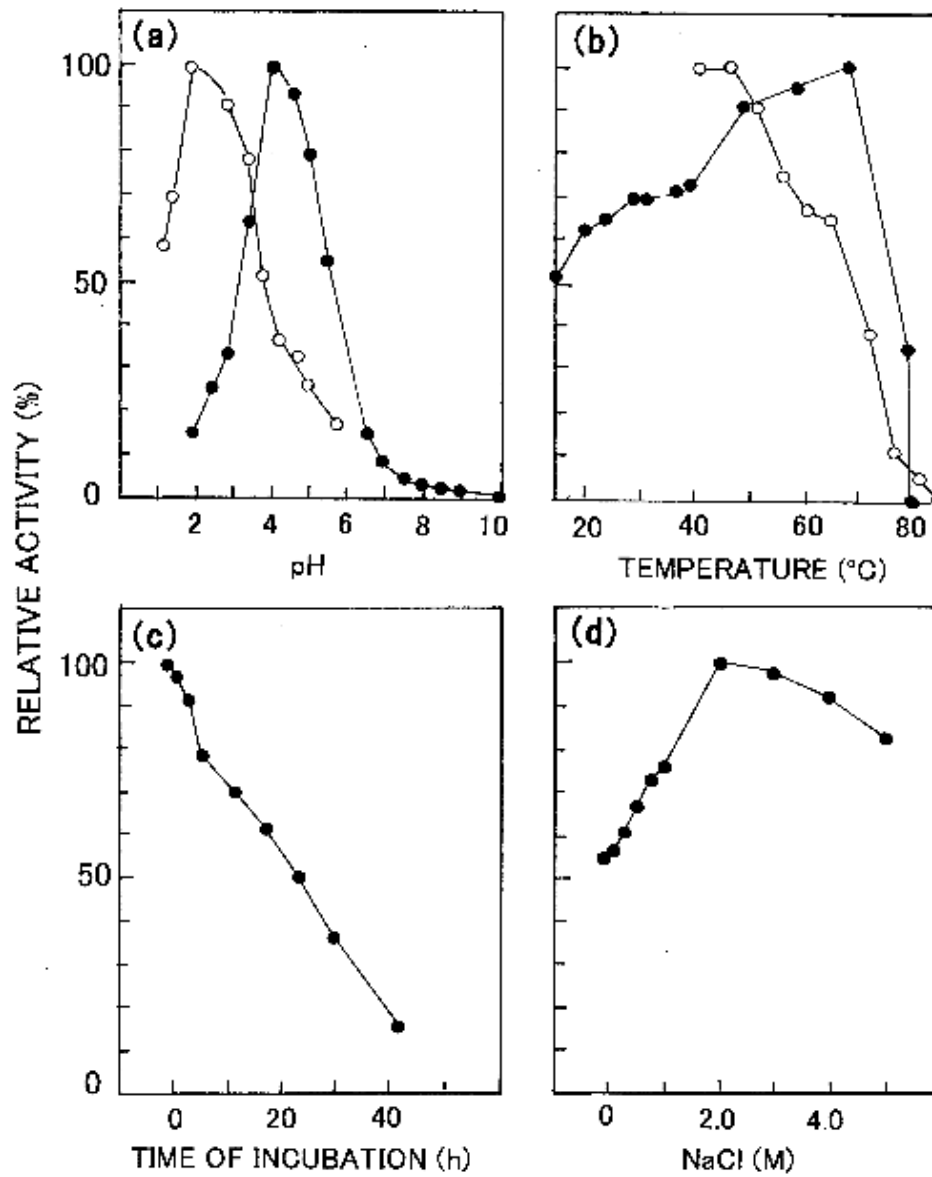


Fig. 5

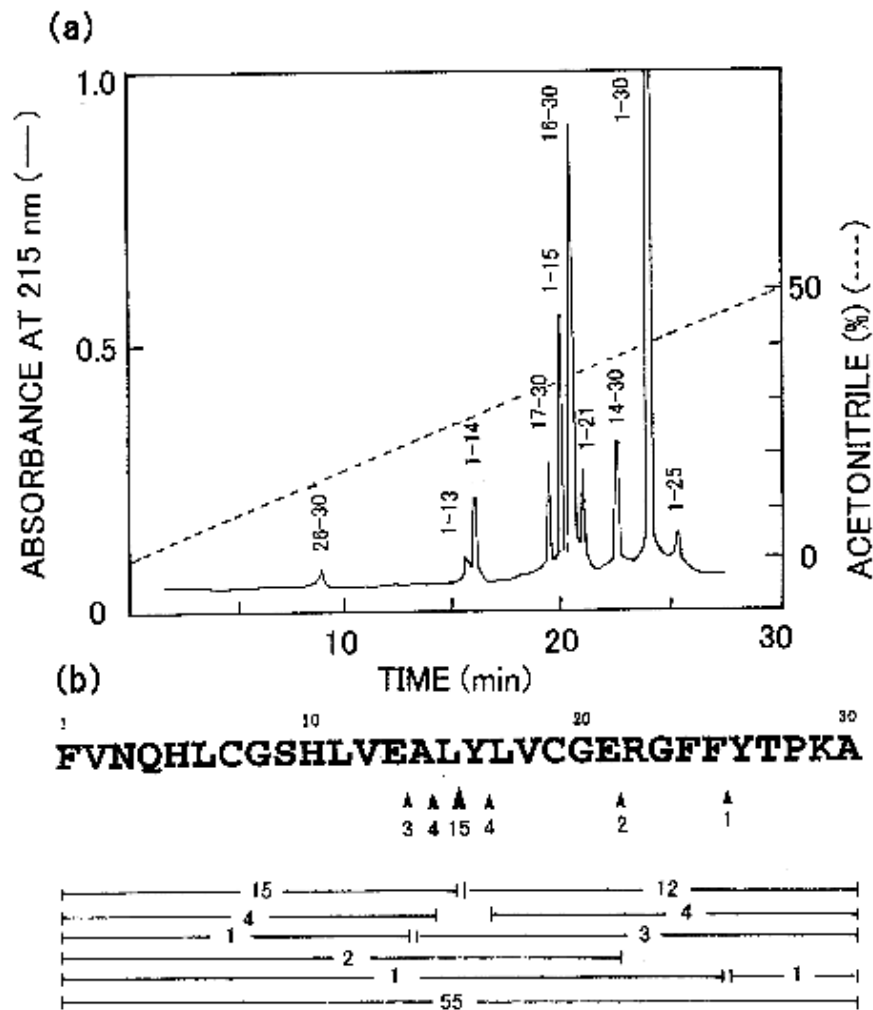


Fig. 6