

ネパール王国のムクチナート伝統医学病院で 蒐集されたチベット薬物

A Collection of Tibetan Crude Drugs
from the Mukutinath Traditional Medical Centre
in the Kingdom of Nepal

薬学部 御影雅幸

緒言

チベット薬物とは「チベット医学」と称される伝統医学で使用される生薬をいう。

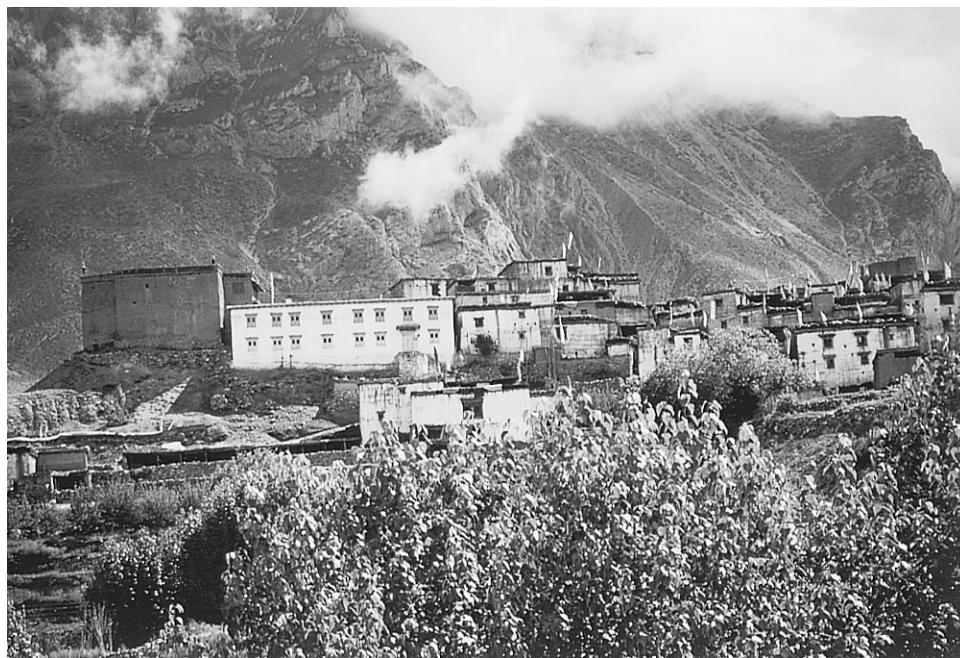
昨今各地の民間療法をも含む伝承医学で利用される薬物を地域文化の一つのとしてとらえようとする動きがある。医療に関する知識は多分に専門的かつヒトの死活に関する重要な問題であり、アーユルヴェーダや中国伝統医学が周辺各地に伝播していることから察せられるように、さらに小さな地域においても当然知識の伝播交流があったものと考えられる。こうした医療文化の伝播を証明しようと企てるとき、理論面の相似は過去の交流を証明するには証拠として弱い、利用される薬物（生薬）の種類や利用方法の共通性は物的証拠として価値があると考えられる。こうしたことから、各民族が利用する生薬を調査研究し、民族間で比較研究することにより医療知識、ひいては文化交流のルートを明らかにしようとする「比較民族薬物学」なるものを提唱されたのが富山医科薬科大学名誉教授の難波恒雄博士である。

筆者自身、1980年代前半から氏と共に、それまで指摘されてきたアーユルヴェーダと中国伝統医学との間での治療理論の類似性、すなわち両医学間での交流の有無を、実用生薬の面からアプローチするべく、それまでわが国ではあまり知られていなかったアーユルヴェーダ薬物の

調査をはじめた。さらに、インドと中国との間に位置するチベット薬物についてはこれまで大いなる感心を持って調査してきた。

従来、チベット医学はインドと中国の2大国に挟まれ、アジアの2大伝統医学からともに影響を受けて発展してきたように考えられていた。実際、チベット医学で使用される生薬には両医学に共通するものが多い。しかし、チベット医学の源流はアーユルヴェーダ（Ayur Veda：インド伝統医学）であり、その治療理念である「身土不二」の考えを正しく実践してきたがために、アーユルヴェーダ発祥の地であるインドで使用されている薬物とはまったく違った薬物をも使用するようになったものと判断される。もとより中国伝統医学における薬物療法とは基本的に異なる部分があり、これまで筆者が生薬について調査した結果からは、チベット薬物の中に中国伝統医学の影響を窺うことができない。かえって、チベット薬物が中国伝統医学に影響を及ぼしてきた可能性が見受けられる。

近年、地球レベルの環境破壊が進む中で、薬用植物の遺伝子資源としての保存の重要性が強く叫ばれるようになってきた。ヨーロッパやアジアの大国における薬用資源調査はかなり進んでいるが、それ以外の途上国の状況に関してはほとんど知られていないのが現状である。一方、そうした地域では西洋医学の急速な導入によって、長年にわたって培われてきた民族薬物に関



MUKUTINATH TRADITIONAL MEDICAL CENTRE (中央左の白い建物)

する知識が失われつつあり、早急な調査が必要となっている。

また、今回の調査対象地となったヒマラヤの中腹地帯は、植物地理学的に日華区系と称される地域に属し、日本や中国と共通する植物種が分布する地域として知られ、われわれになじみの深い植物が多く分布している。薬用植物種としても共通するものが多く、すでに中国や日本の薬用植物について蓄積された学術データを基礎として、生薬の発展的研究を行なうにも適しており、さらに植物の種多様性がきわめて進んだ地域であることから、新資源開発の可能性も高いと期待される。

アジア地区の民族薬物学的な調査研究はまだ緒についたばかりである。当分は画期的な結論を出すにはいたらないであろうが、この分野における調査研究には過去の他隊による各地での蒐集生薬の公表データが参考資料として大きく役だっている。近年では、難波らによるスリランカとネパールにおける調査報告(1983, 1986)や、Usmanghani, 本多らによるパキスタンの調

査報告(1986)があげられる。こうした調査研究に際して、1グループで多くの地域を踏査することはおのずと限界があり、データの共有が必要であることは明白である。

今回、本資料に関する研究テーマに関しては未だ研究半ばではあるが、あえてここに蒐集資料内容を公表することにし、前例にしたがい写真集として閲覧に供することにした。本来は完全な種同定を行なった後に公表すべき性質のものであるが、現状以上の同定作業には多大なる時間と労力とが必要であり、不完全ながらも早期に発表する方が価値があると判断した。なお、難波ら(1983)によるネパールにて蒐集されたチベット薬物の写真集に納められているものはカトマンズのチベット医院で蒐集されたもので、主としてインドと共通する亜熱帯性の薬物であり、今回の報告と重複する生薬はごくわずかである。両資料を総合することによりネパール産チベット薬物のほぼ全容が理解できるものと考えられる。

資料について

資料の蒐集地：ネパール王国西部ネパール，
ジャルコット村（海拔約3700m）

（Jarkot, Mustang District, Dhawaragiri Zone,
West Nepal）

資料情報提供者：ソーマ・ナムゲ氏（Dr.
Sonam Namgyal：ムクチナート伝統医学病院長，
チベット医師）

蒐集時期：1993年8月3日，1994年8月21日，
1995年9月23日。

蒐集方法：ソーマ・ナムゲ氏が管理する生薬
保管室における全生薬について，それぞれ数日
間にわたって氏から名前と薬効を聞き取り調査
しながら蒐集した。なおその際，ジャルコット
村周辺で採集された薬物のみを蒐集し，カトマ
ンズ市場で購入された亜熱帯性の薬物は蒐集し
なかった。また，氏の話では，季節の関係でそ
の時点で保管されていないものが若干数あると
のことであった。

資料数：調査期間中に同病院で蒐集した資料
総数は279点。本報告書ではそのうち重複品や
同類生薬を除いた180点を写真掲載した。なお，
全資料の種々の情報については索引をも兼ねて
一覧表として末尾に付した。

薬物名の記録と表記：薬物名は氏の自筆のチ
ベット文字と，発音をシェルパ族有識者がロー
マ字表記で記録した。チベット文字について，
帰国後ブータン伝統医学病院の Pema Dorje 医
師ならびに在日チベット人 Lakpa Tsoko 氏の 2
名に判読を依頼した。チベット文字のアルファ
ベットによる正規の表記方法があるが，本蒐集
資料に付された文字が個性的な筆記体であり，
全資料を正しく判読することができなかったた
め，ここでは現地における概ね発音に近いロー
マ字表記を掲載することにした。なお，同一薬
物で入手年によりローマ字表記が異なる場合
には，難波ら（1986）の報告を参照し，もっとも
適切と判断した表記を筆頭採用した。他を同物
異名とし，多く確認された異物同名品とともに

末尾の一覧表に掲載した。他のチベット薬物書
をも参照したが，原植物と名称の一致するもの
はほとんどなく，多くは地方名であると判断さ
れる。

原植物の種同定：種同定は全草類生薬につい
ては植物分類学的に肉眼にて行なった。根およ
び根茎類生薬については一部は組織学的に確認
した。その他の生薬については可能な限り肉眼
的に属レベルまでの同定を行なったが，植物標
本としての不完全性のため，未だ解明できてい
ないものも多い。

資料の整理・保管・管理：資料の全点は金沢
大学薬学部付属薬用植物園が管理する標本庫
〔KANP〕に収蔵され，希望に応じて学外者
による利用も可能とする。

その他：本資料は生薬標本であるので，薬効
に関する情報は貴重であると考えられるが，チ
ベット薬物は単味で用いられることがなく，共
に配合される薬物によって薬効が変化するため，
正確な調査ができなかった。チベット医学にお
ける個々の生薬ならびに配合薬の薬効に関して
はすでに成書があるので，ここでは割愛した。

本資料の位置付け：チベット民族は広範な地
域に生活しており，地域によって利用される薬
用植物が異なることは当然であると考えられる。
一方，チベット医学の教育はこれまではラサを
中心に行われてきた。本調査に協力されたソー
マ・ナムゲ氏もラサで7年間の正規教育を受け
た医師である。本資料は連続した3年間に毎年
調査したもので，ネパールヒマラヤ地域におけ
る地方的なチベット薬物の情報として信頼性は
高いと考えるが，なお不明な点があることは否
めず，他の地域を含めた今後の調査研究が待た
れる。

謝辞：本資料のうち、1995年と1994年分は文部省科学研究費補助金、国際学術研究—学術調査（御影雅幸 No. 07041132, 鈴木三男 No. 06041043）による調査時に蒐集されたものである。また、種同定に際して東京大学総合研究博物館所蔵の植物標本を使用させていただいた。資料の整理と写真撮影は当研究室の吉光見稚代女史にお願ひした。ここに深謝の意を表する。

主な参考資料：

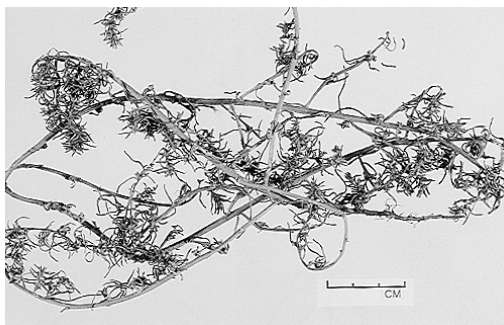
- Dash, B., "Encyclopedia of Tibetan Medicine", Vol. 1~4, Indian Book Center, Delhi, 1994.
- Hara, H. *et al.*, An Enumeration of the Flowering Plants of Nepal, Vol. 1~3, British Museum, London, 1978.
- Namba, T., Ed., "Medicinal Resources and Ethnopharmacology in Sri Lanka and Nepal", Research Institute for Wakan-yaku, Toyama Medical and Pharmaceutical University, Toyama, 1983.
- Namba, T., Ed., "Tibetan Medicine and Materia Medica, Research Institute for Wakan-yaku", Toyama Medical and Pharmaceutical University, Toyama, 1986.
- Oleg Polunin and Adam Stainton, "Flowers of the Himalaya", Oxford University Press, Delhi, 1984.
- Tsewang J. Tsarong, "Tibetan Medicinal Plants", Tibetan Medical Publication, Kalimpong, 1994.
- Usmanghani, K., Honda, G., Miki, W., "Herb Drugs and Herbalists in Pakistan", Institute for the Study of Languages and Cultures of Asia and Africa, Tokyo, 1986.
- 青海省薬品検験所等主編, 『中国蔵薬』, 1~3巻, 上海科学技術出版社, 上海, 1996.

凡例

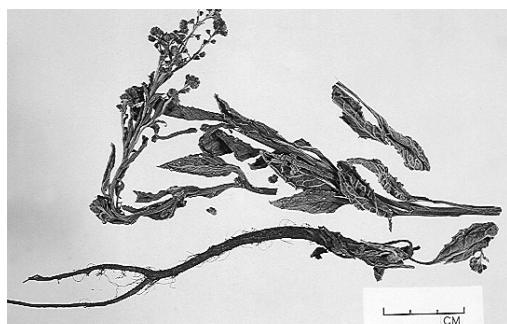
- 配列：資料の配列は概ね、顕花植物の全草類（地上部のみを含む）、茎・材類、花類、種子・果実類、根・根茎類、陰花植物、その他、の順とし、顕花植物の各項目については原植物の科ラテン名のアルファベット順とした。
- 資料番号：番号は便宜的に資料配列順に付した通し番号と、各資料に付された金沢大学薬学部〔KAMP〕所蔵標本番号を掲載した。なお、同一基源と鑑定された資料が複数個存在する場合には、連記した。その場合、最初の番号が写真掲載された資料番号である。
- 生薬名：生薬名は3回の調査結果ならびに難波ら（1986）の報告を参照し、現地名としてもっとも適切であると考えられた名称を採用した。ゆえに、まれに写真掲載された資料に付されている名称と一致しないものがあるので、正確な名称については後掲の一覧表で確認されたい。
- 学名：これまでに種同定ができたものについて記載したが、多くは肉眼により植物形態学的に行なったものであり、確認できているものは少ない。また、学名は概ね原ら（1978）に従い、シノニムは記載しなかった。
- 科名：科レベルの分類についても上記の文献に従った。なお、後掲の一覧表では繁雑を避けるため、ラテン名の最初から6文字のみを掲載した。



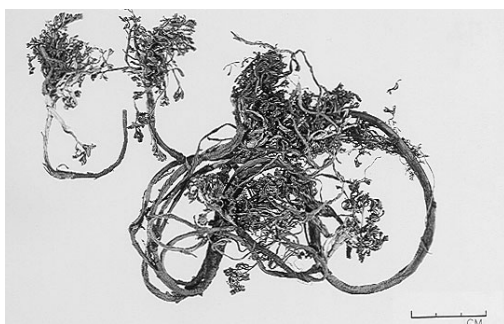
1



2



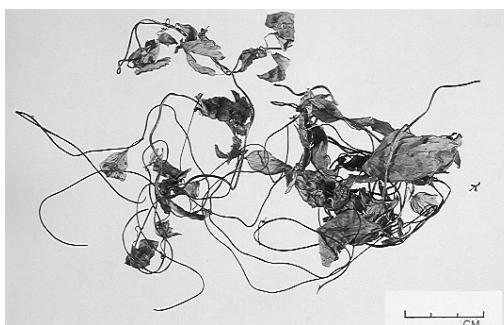
3



4



5



6

1. TUG-MU YONG
[KANP 4524]
Vincetoxicum hirundinaria Medic.
Asclepiadaceae

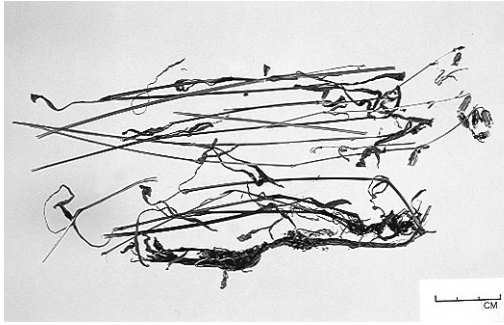
3. ZYAR-BA
[KANP 4583]
Cynoglossum
Boraginaceae

5. LU-DUE-DORJE
[KANP 3069]
Codonopsis nervosa ?
Campanulaceae

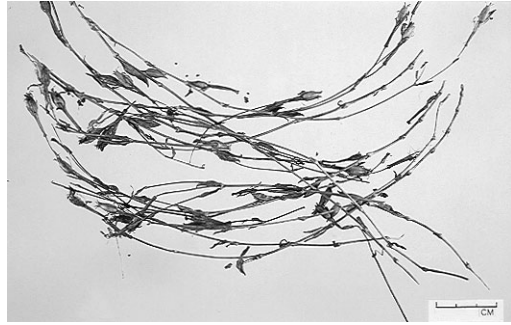
2. TAK-CHIR SHEMBA
[KANP 4528]
Salsola nepalensis Grub.
Chenopodiaceae

4. RE-KYUN
[KANP 4588]
Cyananthus ?
Campanulaceae

6. CHA-TUE DORJE
[KANP 4669]
Codonopsis convolvulacea Kurz
Campanulaceae



7



8



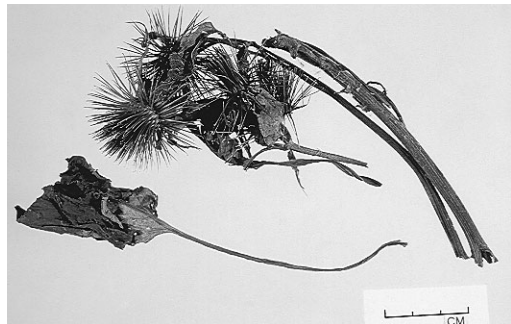
9



10



11



12

7. GYA-KHUR
[KANP 4553]
Silene
Caryophyllaceae

8. NYOEN-A-TRONG
[KANP 3108]
Silene ?
Caryophyllaceae

9. CHA-WOLSE
[KANP 4599]
Chenopodium foliolosum Asch.
Chenopodiaceae

10. TA-PAL
[KANP 3139]
Anaphalis contorta Hook.f.
Compositae

11. GEN-DEN BA-DAR
[KANP 3054]
Anaphalis triplinervis C.B.Clarke
Compositae

12. CHI-CHIR-PHO
[KANP 4662, 3057]
Arctium lappa L.
Compositae



13



14



15



16



17



18

13. KHO-RFUK SHENPA
[KANP 3117]
Artemisia
Compositae

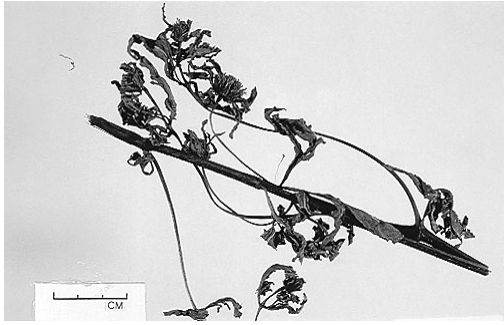
15. YAR-SHING
[KANP 4530]
Artemisia incisa Pamp.
Compositae

17. KHEN-GAR
[KANP 4648, 3047]
Artemisia sieversiana Willd.
Compositae

14. KHEN-MAR
[KANP 4668, 3016, 3903, 4661, 4664, 4671]
Artemisia capillaris Thunb.
Compositae

16. KHEN-MAR-NAK
[KANP 4543]
Artemisia roxburghiana Besser
Compositae

18. GHEN-DA BA-TA
[KANP 4582]
Aster ?
Compositae



19



20



21



22



23



24

19. SA-GU
[KANP 4540]
Bidens tripartita L.
Compositae

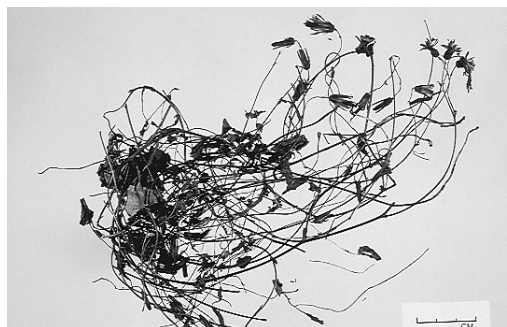
21. SHO-MANG PHO
[KANP 4558]
Cremanthodium arnicoides E. Good ?
Compositae

23. U-PAL
[KANP 4576]
Erigeron uniflorus L.
Compositae

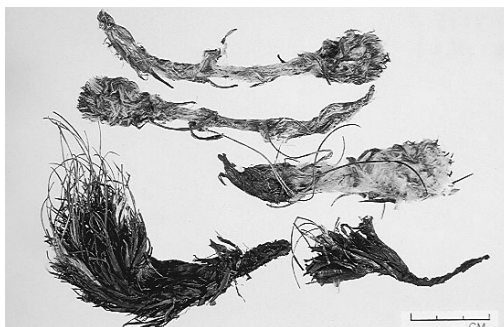
20. MING-CHEN NAK-PO
[KANP 4641]
Clemanthodium
Compositae

22. SAN-ZUM SHEMA
[KANP 4679]
Erigeron multiradiatus C.B. Clarke
Compositae

24. THIK-DON NUR-BU
[KANP 4523]
Ixelis
Compositae



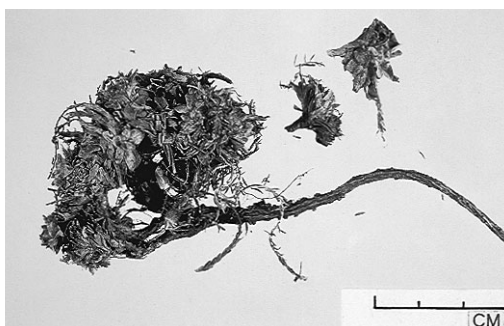
25



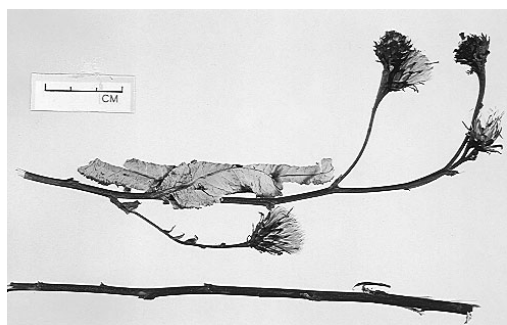
26



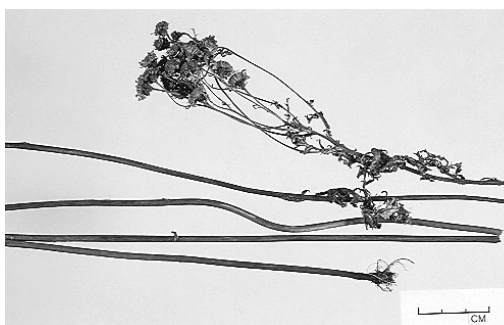
27



28



29



30

25. CHA-LU-DE DORJE
[KANP 4597]
Ixelis ?
Compositae

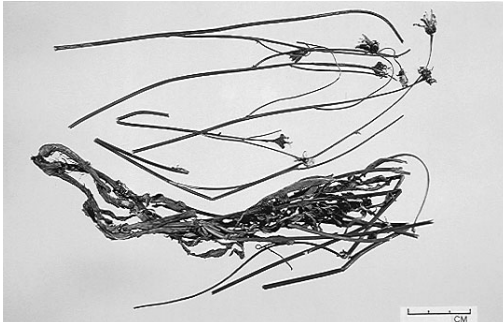
27. JA-GYON-POE
[KANP 3063]
Saussurea ?
Compositae

29. TAR-BU
[KANP 3125]
Saussurea fastuosa Sch.-Bip.
Compositae

26. JA-GOEN-POE
[KANP 3115, 4579, 4640]
Saussurea graminifolia Wall. ex DC.
Compositae

28. NGON-BU
[KANP 4655]
Leontopodium ?
Compositae

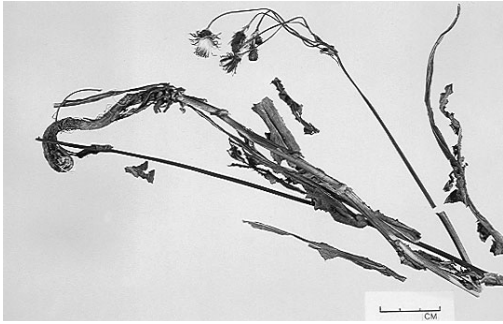
30. SHO-MANG
[KANP 4529]
Senecio crsanthemoides DC. ?
Compositae



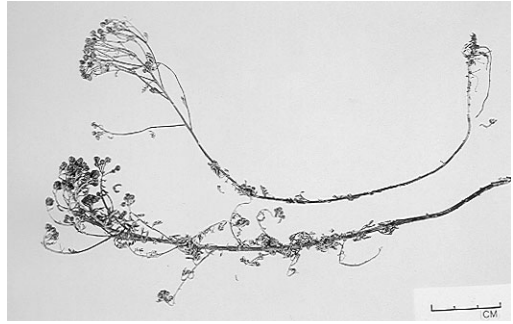
31



32



33



34



35



36

31. LU-DUE-KAR KENPA
[KANP 3119]
Sonchus
Compositae

32. TAG-DOE DORJE
[KANP 4596]
Sonchus ?
Compositae

33. SUM-DIK SHEMBA
[KANP 4622]
Sonchus ?
Compositae

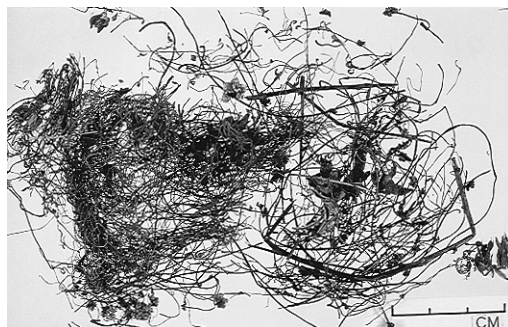
34. KHEN-SER
[KANP 4575]
Tanacetum nubigenum Wall. ex DC.
Compositae

35. SANG-JI NAK-PU
[KANP 4526]

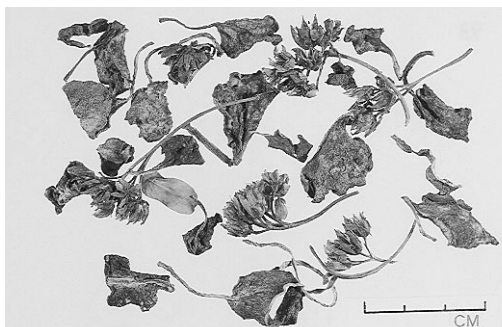
Compositae

36. THANG-DUM
[KANP 4667]

Compositae



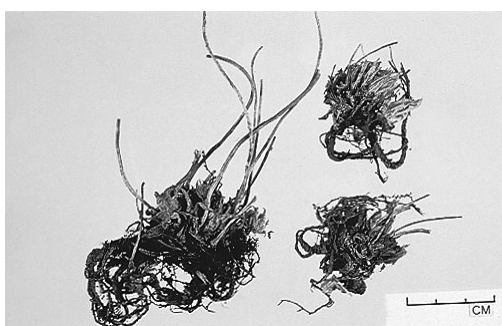
37



38



39



40



41



42

37. DUL-SHAK
[KANP 4607]
Cuscuta
Convolvulaceae

38. TAK-GHE
[KANP 4609]
Sedum filipes Hemsl.
Crassuraceae

39. NGO-GA-DHIK NAK-PU
[KANP 4610]

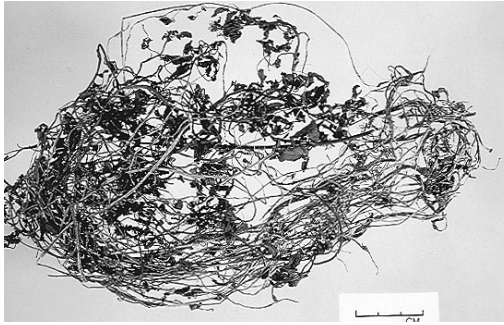
40. A-WU-CHE
[KANP 4613]

Crassuraceae

Crassuraceae

41. SO LO
[KANP 4577]
Arabis ?
Cruciferae

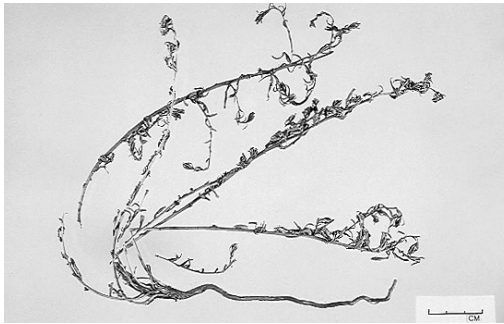
42. SU-KHA
[KANP 4653, 3099]
Capsella bursa-pastoris Medius
Cruciferae



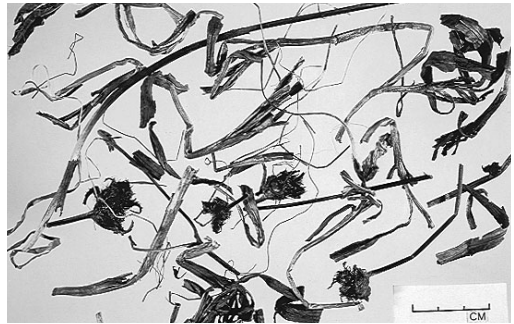
43



44



45



46



47



48

43. THA-BO
[KANP 4608]
Cardamine ?
Cruciferae

44. DE-GA
[KANP 3100, 4594]
Thlaspi arvense L.
Cruciferae

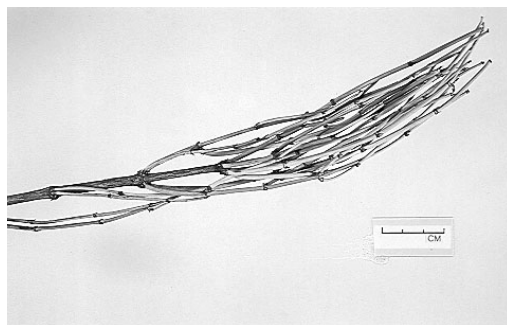
45. CHA-SHUNG LAK-PU
[KANP 4546]

Cruciferae

46. THA-BO
[KANP 4643]
Morina ?
Dipsacaceae

47. A-CHAK CHERMA
[KANP 4649]
Morina longifolia Wall. ex DC.
Dipsacaceae

48. PANG-JE
[KANP 4571, 4603]
Pterocepalus hookeri (C.B.Clarke) Diels
Dipsacaceae



49



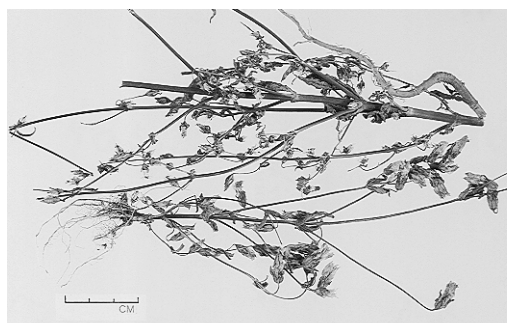
50



51



52



53



54

49. CHE-DI
[KANP 3038]
Ephedra pachyclada Boiss.
Ephedraceae

51. PAN-GEN THA-WO
[KANP 4595, 3075, 3076]
Gentiana algida Pallas
Gentianaceae

53. SANG-DIK-MO
[KANP 4565]
Gentianella ?
Gentianaceae

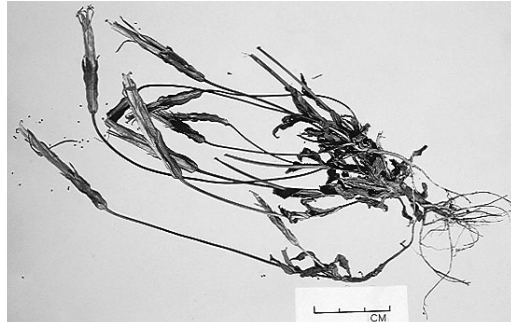
50. GYA-SHUN LHA-KMA-CHEN
[KANP 3044]
Cassiope fastigiata D.Don
Ericaceae

52. KHIL-CHE
[KANP 4621, 3071, 3906]
Gentiana robusta King ex Hook.f.
Gentianaceae

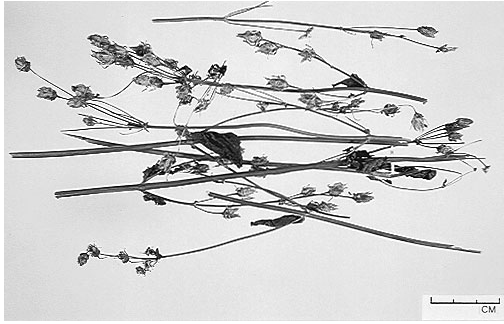
54. PAN-GEN NGONBU
[KANP 4645, 4552]
Gentiana bryoides Burkill?
Gentianaceae



55



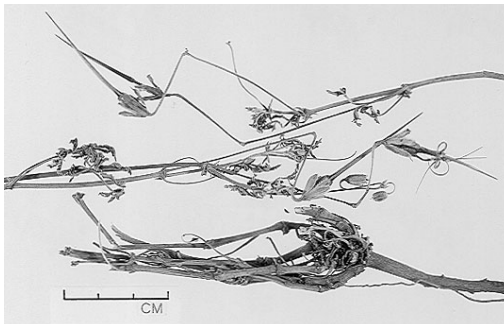
56



57



58



59



60

55. KHUR-TIK
[KANP 4564, 3138]
Gentianella moorcroftiana Airy Shaw
Gentianaceae

56. CHYAK-TIK-NAK
[KANP 4545, 3042]
Gentianella paludosa H.Sm.
Gentianaceae

57. CHAK-TIK
[KANP 3055, 4587]
Halenia elliptica D.Don
Gentianaceae

58. SANG-DHIK
[KANP 4538, 3118 ?]
Swertia
Gentianaceae

59. MING-MIN-CHURIN
[KANP 4626]
Erodium cicutarium L'Her.
Geraniaceae

60. MING-MEN CHU-RIN
[KANP 4542, 3104]
Geranium
Geraniaceae



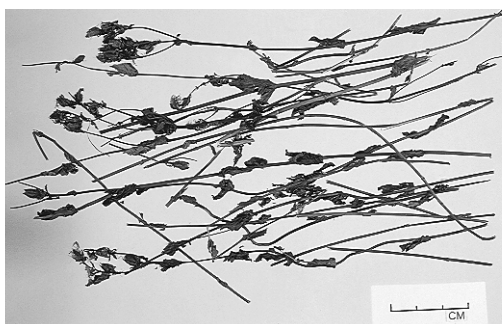
61



62



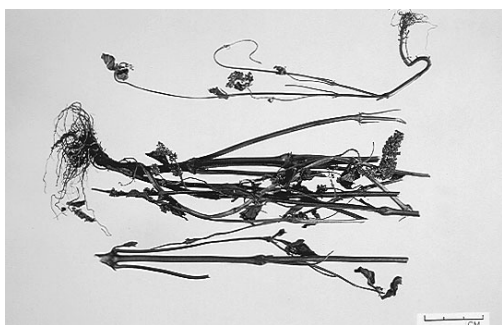
63



64



65



66

61. PAR-PA-TA
[KANP 4616]
Geranium
Geraniaceae

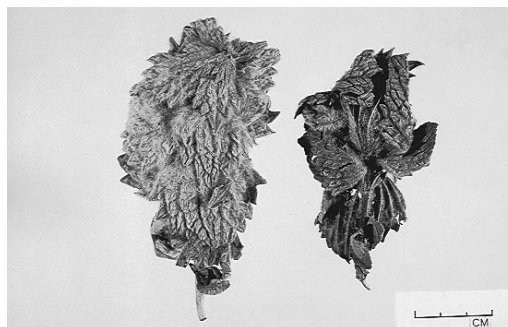
63. LI-KHA-TUR
[KANP 4573]
Geranium pratense L.
Geraniaceae

65. DHE-MA
[KANP 4593]
Iris decora Wall. ?
Iridaceae

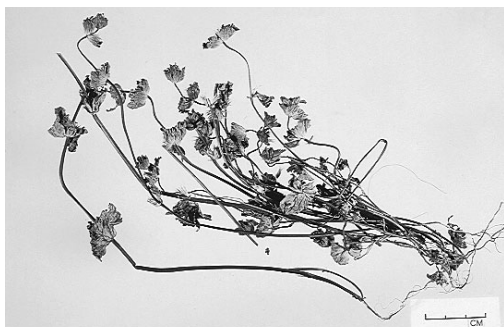
62. MIK-MEN CHU-RI
[KANP 3902, 3050]
Geranium donianum Sweet ?
Geraniaceae

64. TAK-NGU
[KANP 4637]
Hypericum
Hypericaceae

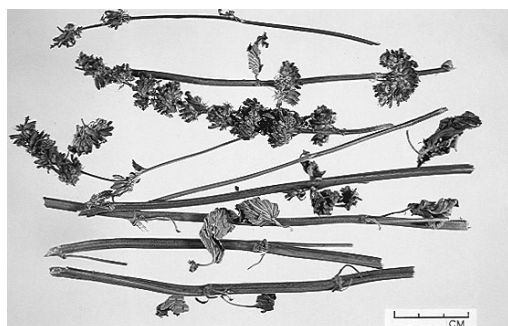
66. JHA-RAB
[KANP 3078]
Elsholtzia ?
Labiatae



67



68



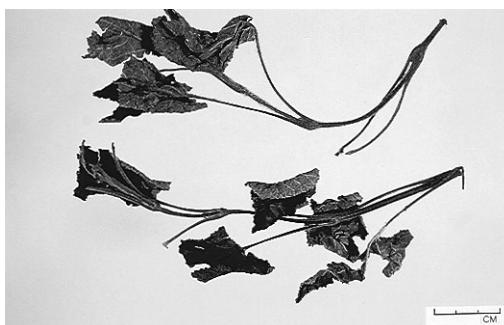
69



70



71



72

67. GAN-SUR MENDOK
[KANP 4606, 2292, 3066]
Eriophyton wallichii Benth.
Labiatae

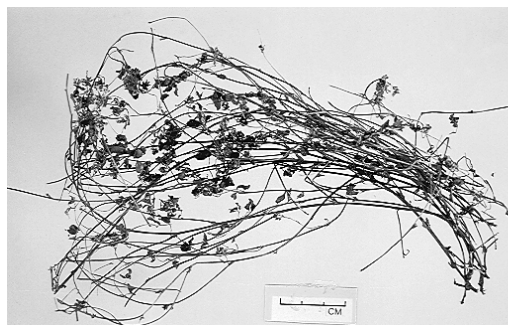
69. CHA-BU-CHE
[KANP 3064, 4525, 3904]
Nepeta hindostana Haines
Labiatae

71. NA-RAM
[KANP 3067]
Prunella vulgaris L.
Labiatae

68. CHAM-KU
[KANP 4639]
Lamium ?
Labiatae

70. KHE-NAK
[KANP 4535]
Rabdosia pharica Hara
Labiatae

72. JHIP-CHA-MO
[KANP 3053]
Salvia
Labiatae



73



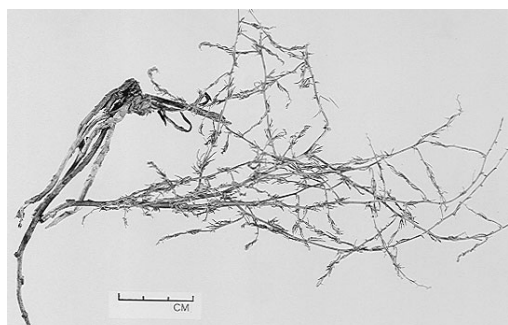
74



75



76



77



78

73. BU-SU-HANG
[KANP 3090, 4634]
Medicago falcata L. ?
Leguminosae

75. RAG-DIK-PA
[KANP 4611, 3058]
Oxytropis williamsii Vassilicz.
Leguminosae

77. NGIR-SING
[KANP 4521]
Asparagus fillicinus Buch.-Ham. ex D.Don
Liliaceae

74. NGO-TAK-SHA
[KANP 4560, 3077]
Oxytropis mollis Royle ex Benth.
Leguminosae

76. RI-KOK
[KANP 3043]
Allium
Liliaceae

78. NGO-THUN-NGUNG
[KANP 4569, 3098]
Epilobium
Onagraceae



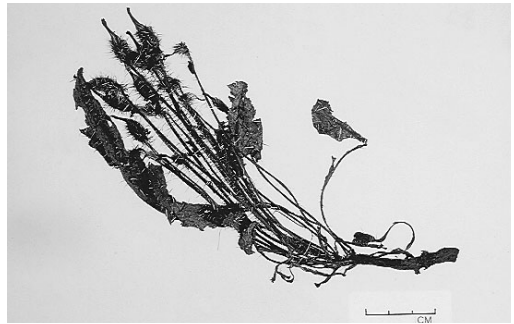
79



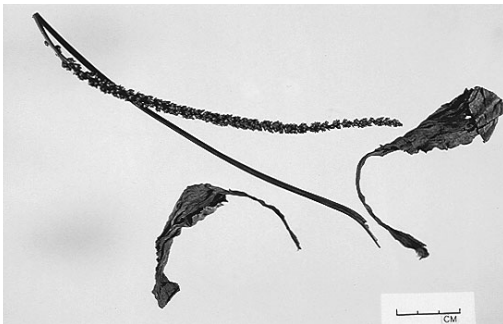
80



81



82



83



84

79. A-KHA NGOENPO
[KANP 3073, 4592]
Epipactis
Orchidaceae

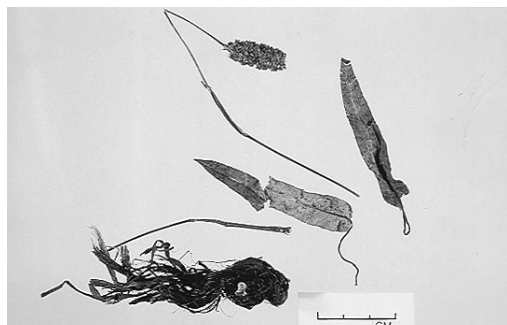
81. CHA-THIK
[KANP 4600, 3046, 3909]
Dicranostigma lactucoides Hook. f. & Thoms.
Papaveraceae

83. THA-RAM
[KANP 4585, 3112]
Plantago major L. ?
Plantaginaceae

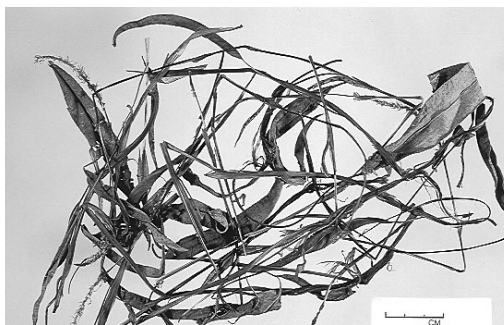
80. BA-SHA-KA
[KANP 4548, 3049]
Dicentra macrocapnos ?
Papaveraceae

82. A-CHAK CHEN-GUN
[KANP 4598, 3114]
Meconopsis horridula Hook.f. & Thoms.
Papaveraceae

84. RONG-NGULU
[KANP 4638]
Aconogonum alpinus Schur ?
Polygonaceae



85



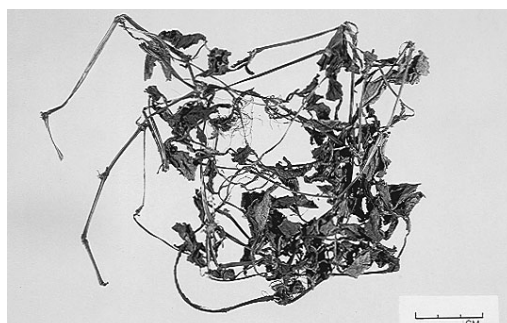
86



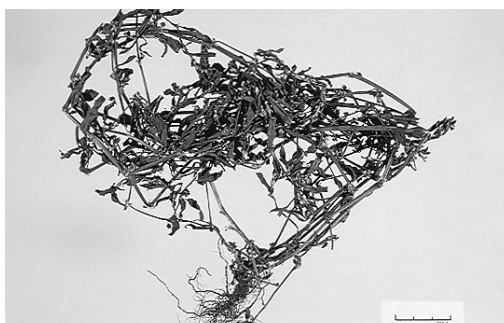
87



88



89



90

85. PANG-RAM
[KANP 3919]
Bistorta macrophylla Sojak
Polygonaceae

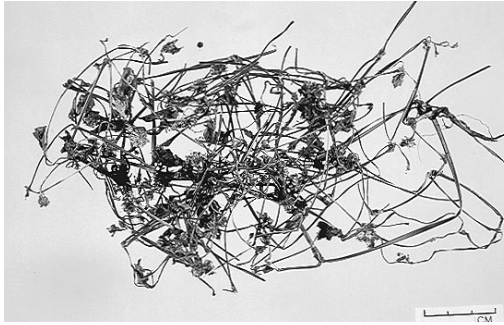
86. PANG-RAM LHO-WA
[KANP 3920]
Bistorta vivipara S.F.Gray var. *jaljalensis*
Polygonaceae

87. CHA-HUNG-LEN
[KANP 3923, 3051]
Bistorta affinis Greene
Polygonaceae

88. NGA-LO GHE-PO
[KANP 4563]
Oxyria digyna Hill
Polygonaceae

89. NGA-LO
[KANP 4556]
Persicaria nepalensis H.Gross ?
Polygonaceae

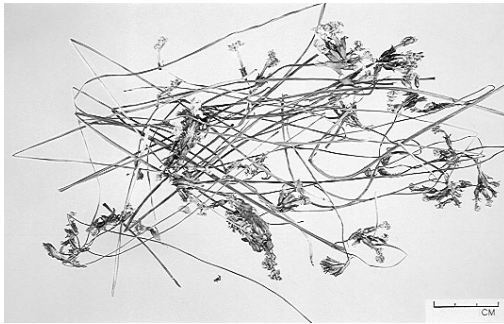
90. SHUR-CHI-NAK
[KANP 4554]
Polygonum aviculare ?
Polygonaceae



91



92



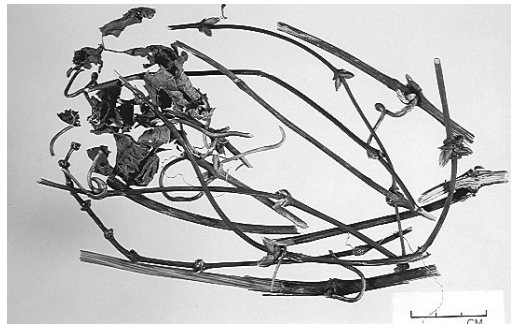
93



94



95



96

91. NYA-LO
[KANP 3105]
Polygonum ?
Polygonaceae

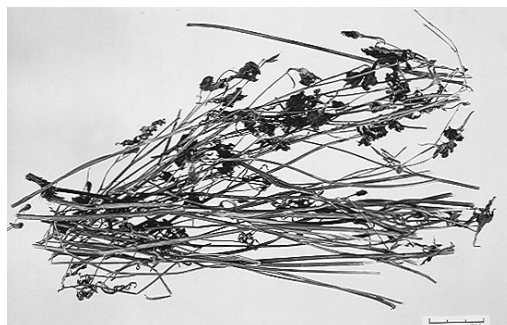
92. NYON-GA-TIGK
[KANP 3062]
Androsace
Primulaceae

93. SHANG-THIL KAR-PU
[KANP 3140, 3986]
Primula
Primulaceae

94. BONG-KAR
[KANP 4536, 3110, 3901]
Aconitum
Ranunculaceae

95. SUP-KHA
[KANP 4551, 3061, 4650]
Anemone rivularis Buch.-Ham. ex DC.
Ranunculaceae

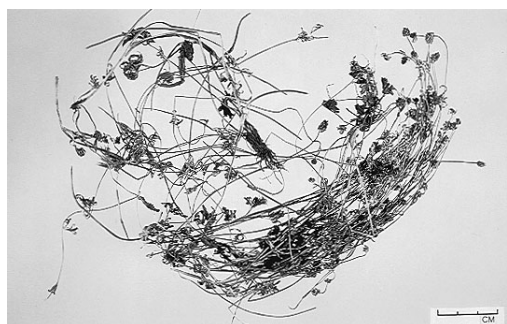
96. I-MUNG-KARPO
[KANP 4644, 3091]
Clematis tibetana Kuntze
Ranunculaceae



97



98



99



100



101



102

97. JA-KANG-METHO
[KANP 3072, 4586]
Delphinium
Ranunculaceae

98. CHAR-KOE-PE
[KANP 4527, 2293]
Delphinium brunonianum Royle
Ranunculaceae

99. KE-CE METHO
[KANP 3039]
Ranunculus acris ?
Ranunculaceae

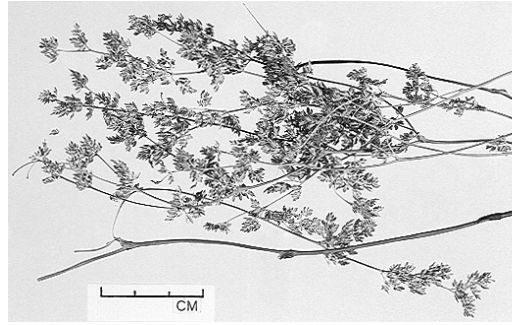
100. CHE-CHA-PHO
[KANP 4646, 4559]
Ranunculus
Ranunculaceae

101. NGO-TON GU-RI
[KANP 4541]
Thalictrum
Ranunculaceae

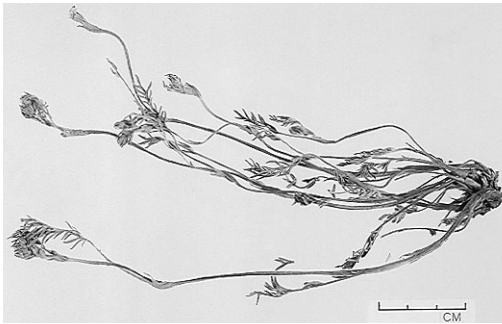
102. CHA-KYU-PHO
[KANP 4557]
Thalictrum
Ranunculaceae



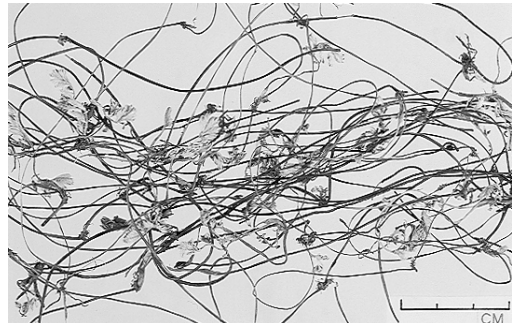
103



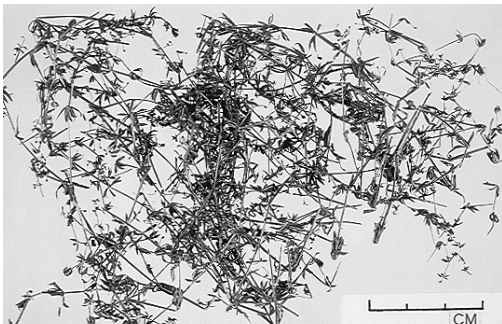
104



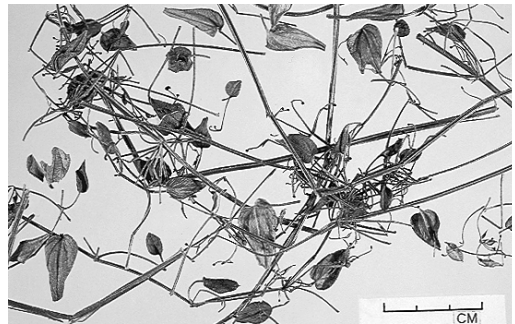
105



106



107



108

103. NYOEN-TRIN
[KANP 3102, 3065]
Thalictrum
Ranunculaceae

104. DAMEN-CHA-KYU
[KANP 4550]
Thalictrum platycarpum Hook.f. et Thoms. ?
Ranunculaceae

105. WUK-CHUK-SHEMBA
[KANP 4614]
Potentilla
Rosaceae

106. THOL-TA SA-DIN
[KANP 4617]
Potentilla ?
Rosaceae

107. SANG-JE KA-RU SHEMBA
[KANP 4537]
Galium
Rubiaceae

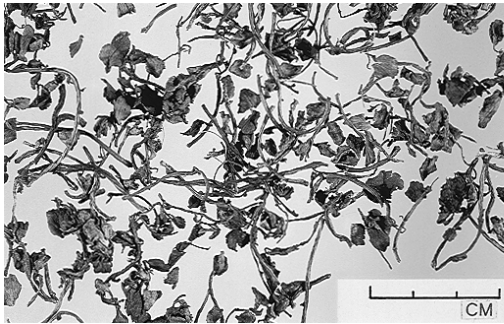
108. SANG-JI KAR-PU
[KANP 4581, 3121]
Rubia manjith Roxb. ex Fleming
Rubiaceae



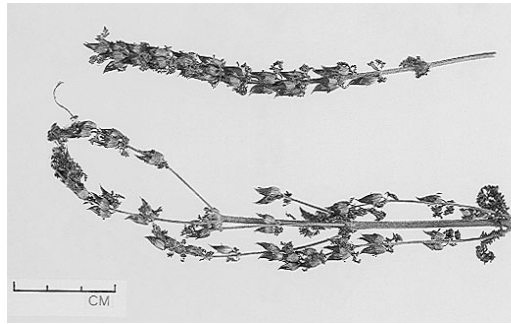
109



110



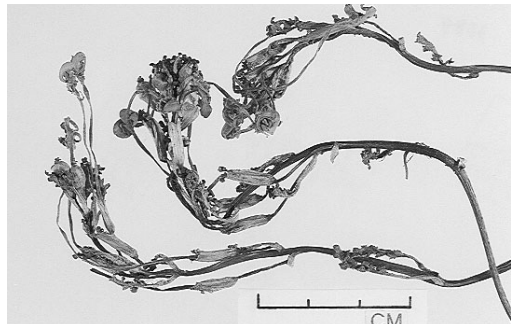
111



112



113



114

109. PA-YAK
[KANP 3048, 3905, 4522]
Lancea tibetica Hook.f. & Thoms.
Scrophulariaceae

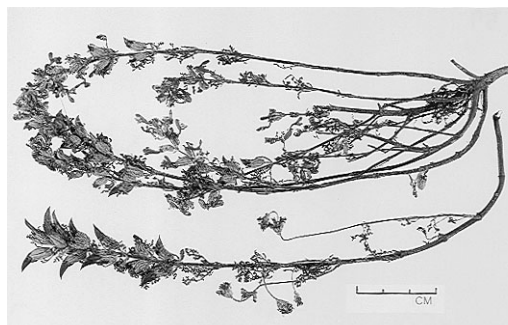
110. THAK PHA-SHYA-KHA
[KANP 4568, 3103, 3908]
Lagotis cashmeriana Rupr. ?
Scrophulariaceae

111. YA-KHIL-MA
[KANP 4631]
Cryosplenium ?
Saxifragaceae?

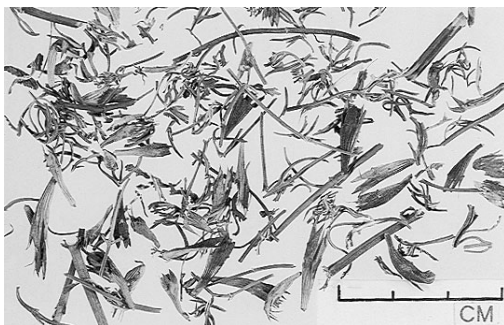
112. LANG-NA SHEBA
[KANP 4566, 3056, 4534, 4578]
Pedicularis gracilis Wall. ex Benth.
Scrophulariaceae

113. LHA-LANG
[KANP 4663]
Pedicularis
Scrophulariaceae

114. LUK-RU SER-PO
[KANP 3089]
Pedicularis longiflora Rudolph
Scrophulariaceae



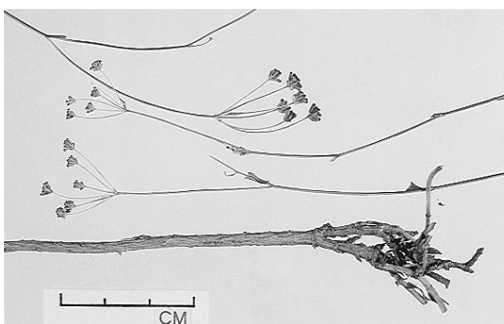
115



116



117



118



119



120

115. LANG-NA SHEMBA
[KANP 4574]
Pedicularis pennelliana Tsoong
Scrophulariaceae

116. TE-YAN-KHU
[KANP 4632]

Scrophulariaceae

117. SER-JAY
[KANP 3070]
Verbascum thapsus L.
Scrophulariaceae

118. TU-NAK CHUNGA
[KANP 3219]
Bupleurum gracillimum Klotzsch
Umbelliferae

119. WU-SU
[KANP 4652, 3101]
Coriandrum sativum L.
Umbelliferae

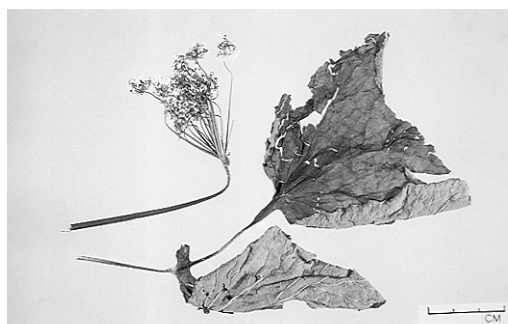
120. BHO-DO-WA
[KANP 4584]
Cortia depressa C.Norman
Umbelliferae



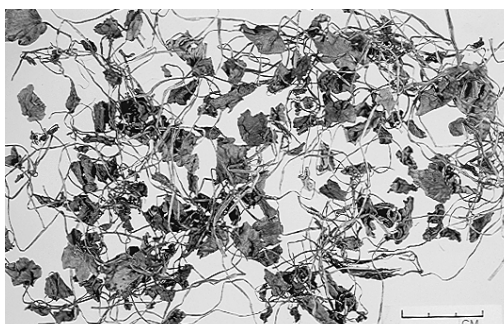
121



122



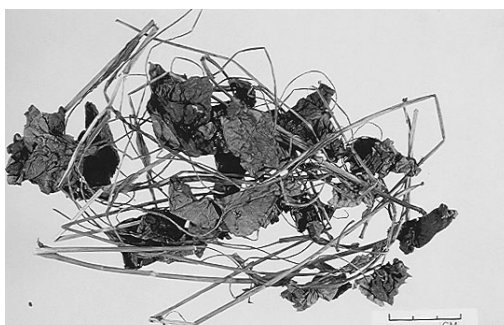
123



124



125



126

121. TU-NA
[KANP 4654]

Umbelliferae

123. TU-NAK
[KANP 4580]
Heracleum lalii Norman ?
Umbelliferae

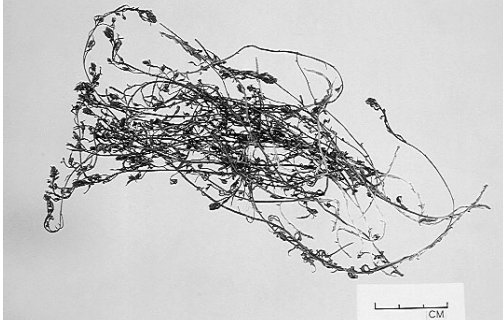
125. PA-YA-SHING
[KANP 4532]
Viola
Violaceae

122. GON-GER
[KANP 4533]

Umbelliferae

124. HU-RU-PA
[KANP 4673]
Hydrocotyle ?
Umbelliferae

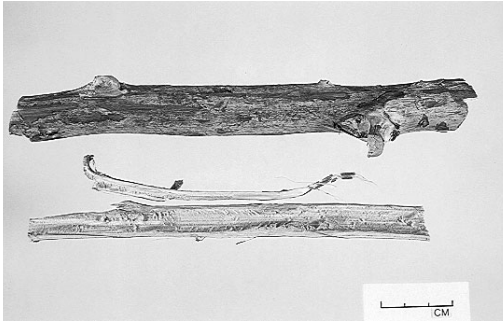
126. LU-TI DORCHI SHEMBA
[KANP 4539]



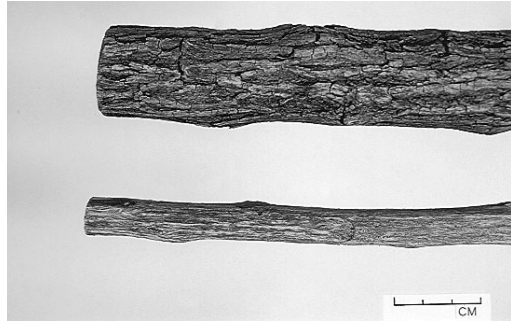
127



128



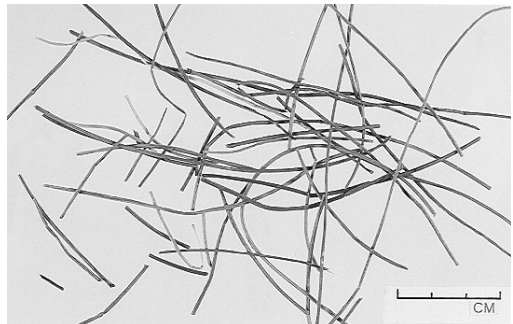
129



130



131



132

127. TAP-SANG PAR-BA-TA
[KANP 4629]

128. RANG-YEN TRO-LO
[KANP 3040]

129. PEN-DHA-KA-RI
[KANP 4555]

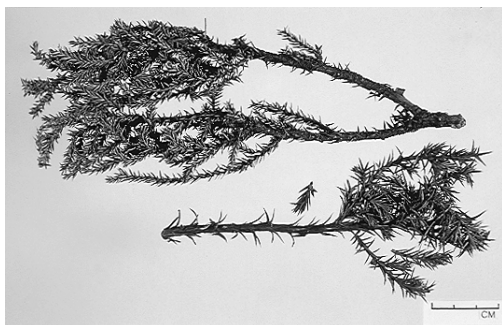
130. KER-PA
[KANP 3083]
Berberis
Berberidaceae

131. AM-BU SING
[KANP 4677, 3084]
Myricaria rosea W.W. Smith ?
Tamaricaceae

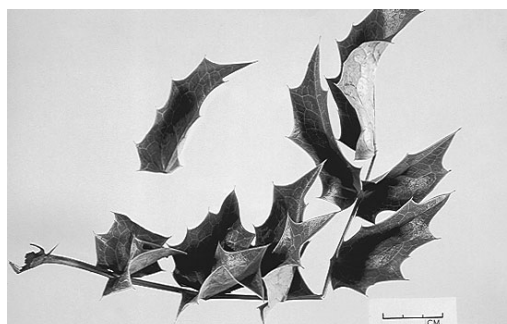
132. A-A-WA
[KANP 4520]
Juncaceae



133



134



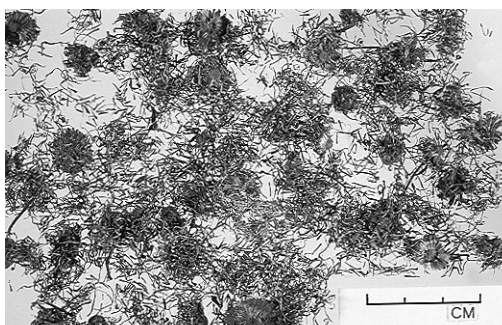
135



136



137



138

133. THANG-SHING LO-MA
[KANP 3113]
Pinus wallichiana A.B.Jackson
Pinaceae

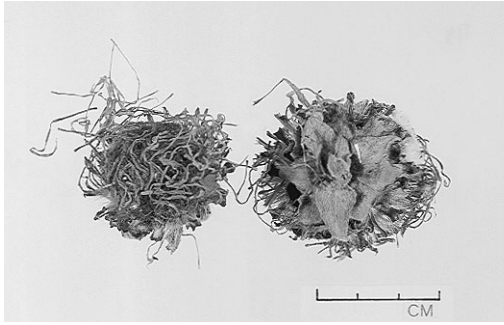
135. KIR-KOE LHO-MA
[KANP 4656]
Mahonia napaulensis DC. ?
Berberidaceae

137. SHUNG-KHEN
[KANP 4670]
Theaceae ?

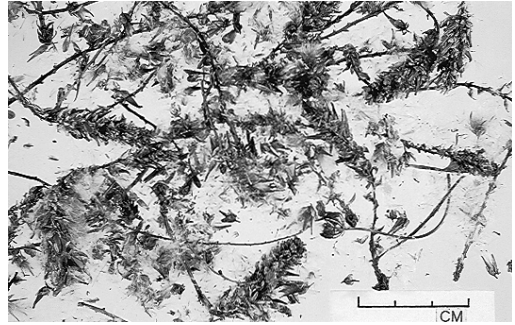
134. DRU-CHAR
[KANP 3094]
Juniperus indica Bertol. ?
Cupressaceae

136. TA-MIK
[KANP 4590]
Compositae

138. U-PAL RALDI-MA
[KANP 4627]
Erigeron bellidioides Benth. ?
Compositae



139



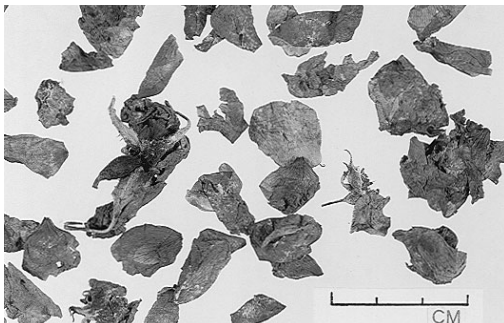
140



141



142



143



144

139. MA-NU PA-TA
[KANP 4591]
Inula grandiflora Willd. ?
Compositae

140. AM-BU MENDO
[KANP 4674, 3107]
Myricaria
Tamaricaceae

141. LUK-RU SER-PU
[KANP 4612]
Pedicularis longiflora Rudolph var. *tubiformis*
Scrophulariaceae

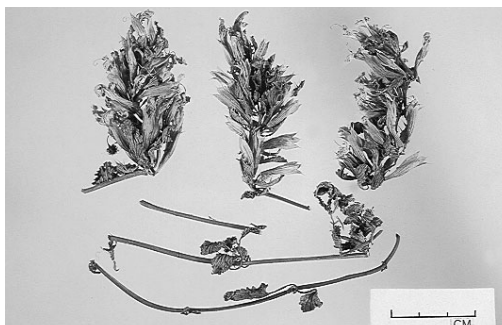
142. SEN-SER MENDHOK
[KANP 4605]
Pedicularis
Scrophulariaceae

143. SO-YI-RTOG
[KANP 2297]
Rosa macrophylla Lindl.
Rosaceae

144. SI-PI-MENDOK
[KANP 4623, 3037]
Rosa sericea Lindl.
Rosaceae



145



146



147



148



149



150

145. TAN-GYUN
[KANP 4544]
Pleurospermum ?
Umbelliferae

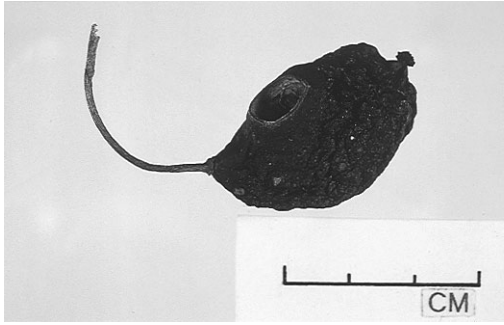
146. NGEN-THUL-BA
[KANP 4567, 3052]
Dracocephalum heterophyllum Benth.
Labiatae

147. YU-KU SHIN-GAM SER-CHI
[KANP 4549]
Verbascum thapsus L.
Scrophulariaceae

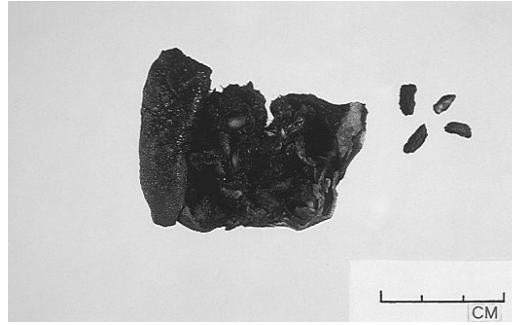
148. DALI-KAR MENDO
[KANP 4666, 2298, 3060]
Rhododendron anthopogon D. Don
Ericaceae

149. DA-LI KARPUS
[KANP 4676, 3082, 4657]
Rhododendron lepidotum Wall. ex G. Don
Ericaceae

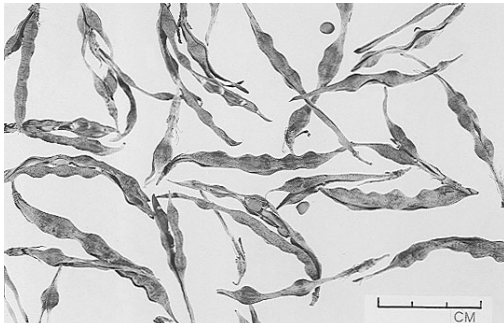
150. RAM-NGE
[KANP 4547]
Salvia
Labiatae



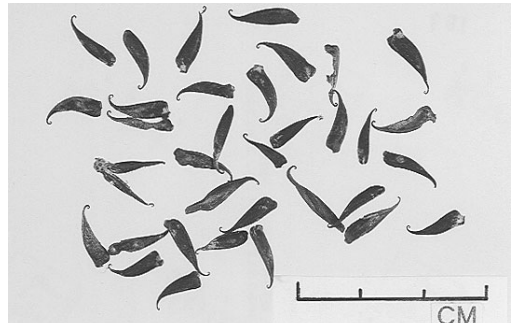
151



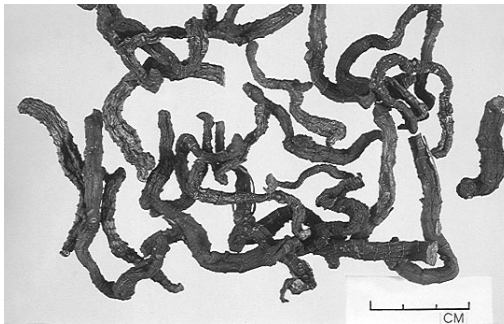
152



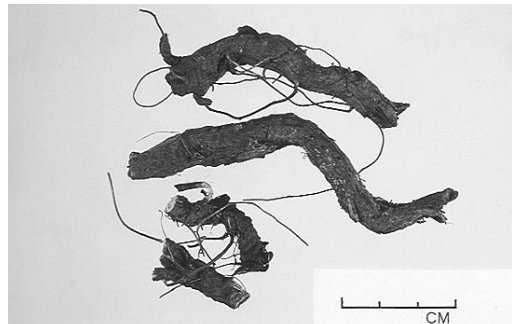
153



154



155



156

151. WHOL-MU SE
[KANP 4561]
Paris polyphylla Smith
Liliaceae

152. SEN-DU SHEMBA
[KANP 4618]
Punica granatum
Punicaceae

153. KIM-DO
[KANP 4601]
Sophora moorcroftiana Benth. var. *nepalensis*
Leguminosae

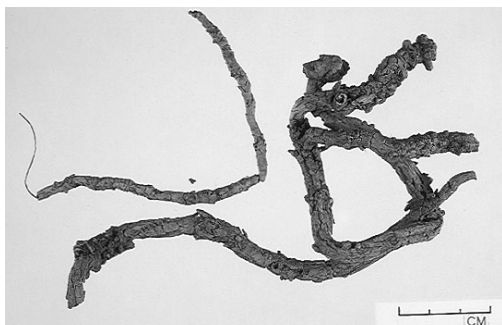
154. SUP-DE
[KANP 4624]
Anemone rivularis Buch.-Ham. ex DC.
Ranunculaceae

155. RA-MNGE
[KANP 4660, 3124]
Polygonatum cirrhifolium Royle ?
Liliaceae

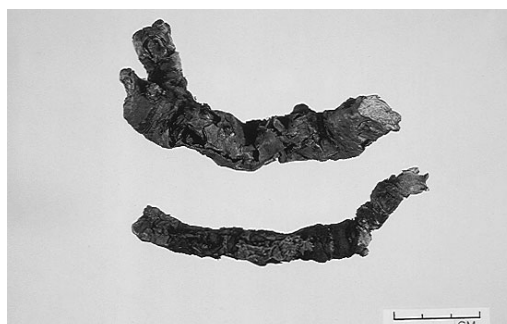
156. LI-GA-TOR
[KANP 3922]
Bistorta amplexicaulis Greene
Polygonaceae



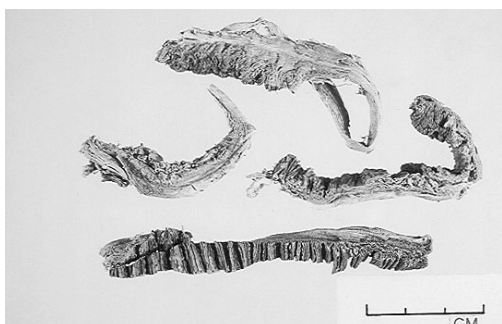
157



158



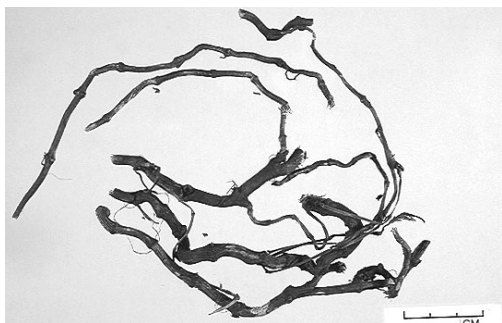
159



160



161



162

157. PANG-RAM-PHO
[KANP 3921, 2296, 3096]
Bistorta vivipara S.F.Gray var. *jaljalensis*
Polygonaceae

159. GHA-TIK
[KANP 3109]
Androsace sarmentosa
Primulaceae ?

161. PANG-POE
[KANP 4658, 3081]
Nardostachys grandiflora DC.
Valerianaceae

158. HUNG-LEN
[KANP 4562, 3910, 4680]
Picrohiza scrophulariiflora Pennell
Scrophulariaceae

160. CHA-WA
[KANP 4589]
Umbelliferae ?

162. NGA-LO CHA-WA
[KANP 4636]



163



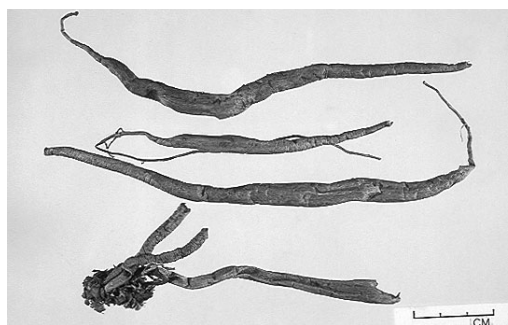
164



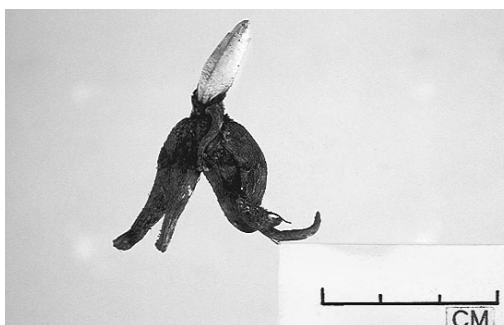
165



166



167



168

163. PANG-TSI
[KANP 3086]
Pteroccephalus hookeri (C.B.Clarke) Diels
Dipsacaceae

165. KHAM-RU-TA
[KANP 4642]

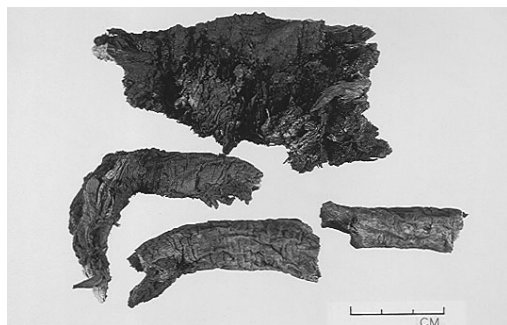
167. NYE-SHING
[KANP 4602, 3116]
Asparagus racemosus Willd.
Liliaceae

164. THAN-NU
[KANP 4675, 3093]

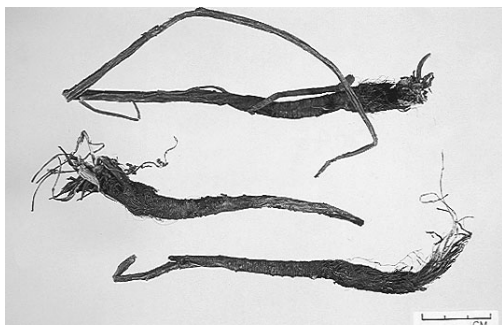
Crassuraceae

166. SE-MA KAR-PU
[KANP 4604]
Astragalus ?
Leguminosae

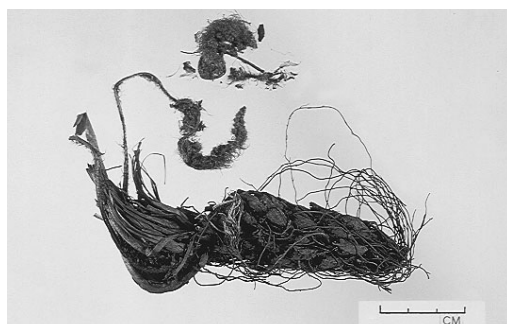
168. WONG-LA
[KANP 4620]
Orchis latifolia L. var. *incarnata*
Orchidaceae



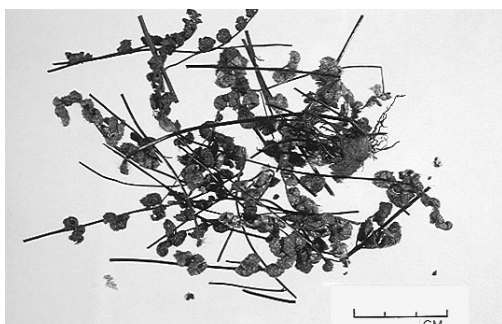
169



170



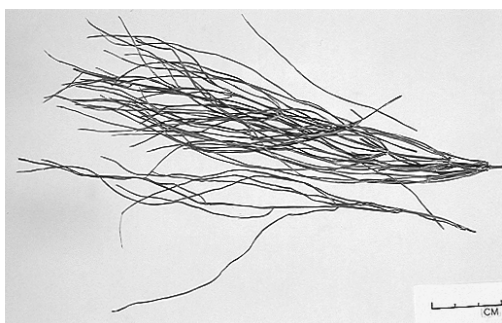
171



172



173



174

169. CHOM-ZA
[KANP 4659, 3122]
Rheum australe D.Don
Polygonaceae

171. NGO-KHUNG-DER
[KANP 4672]

fern

173. DHO-WA
[KANP 4633]
Arisaema jacquemontii Blume ?
Araceae

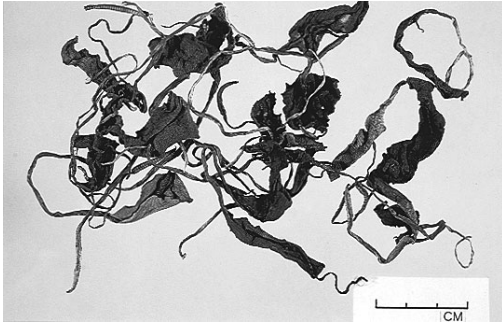
170. CHA-WA
[KANP 3045]

Umbelliferae ?

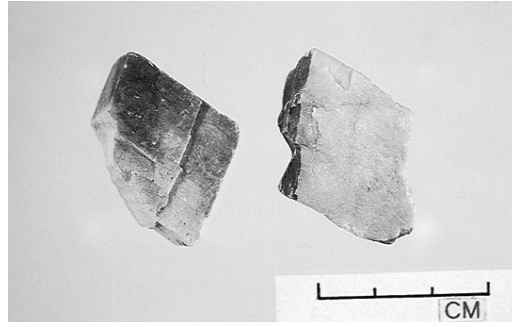
172. RI-RAL
[KANP 4615]

fern

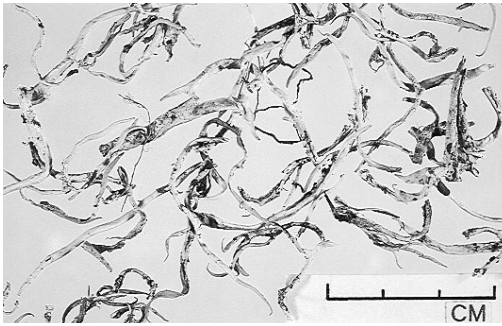
174. CHA-KHU-SHANG
[KANP 4570, 3041]
Equisetum
Equisetaceae



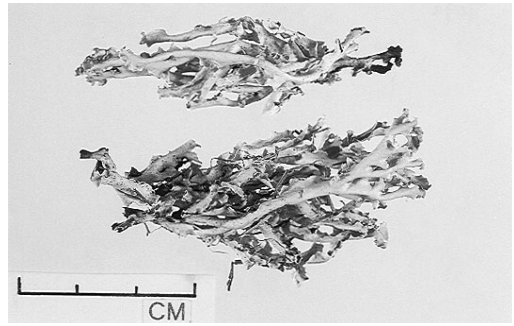
175



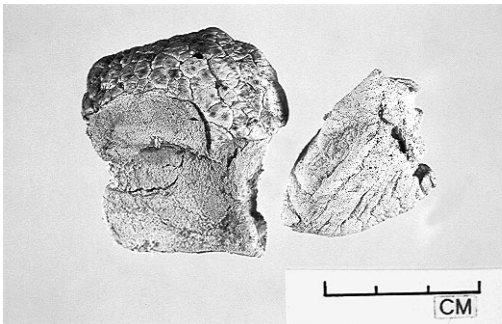
176



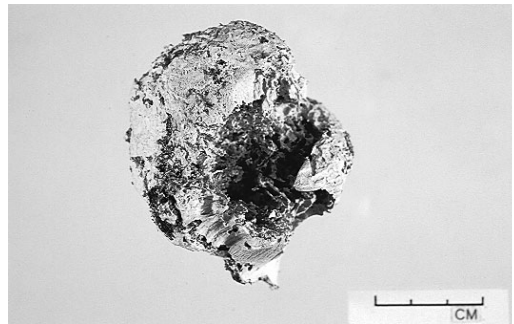
177



178



179



180

175. KANG-JIK
[KANP 4625]
Ophioglossum
Ophioglossaceae

176. DO-CHUNG-SHI SHEMBA
[KANP 4635]
stone

177. SHA-RA
[KANP 4628]
Thamnolia
lichen

178. PANG-TRIK
[KANP 3092]
lichen

179. SHA-MU-DUM
[KANP 4531]
Lanopila
mashroom

180. SING-SHA
[KANP 4678]
Lanopila
mashroom

Table 1 : A NAME LIST OF TIBETAN CRUDE DRUGS USED IN
MUKTINATH TRADITIONAL MEDICAL CENTRE

LOCAL NAME OF CRUDE DRUG	SCIENTIFIC NAME	FAMILY	PART	P.No.	KAMP No.	YEAR
A-A-WA		Juncac	Stm	132	4520	1995
A-CHAK CHEN-GUN	Meconopsis horridula Hook. f. & Thoms.	Papave	WP	82	4598	1995
A-CHAK CHERMA	Morina longifolia Wall. ex DC.	Dipsac	WP	47	4649	1995
A-JAK-TSER-NYOEN*	Epipactis	Orchid	WP	79	3073	1994
A-KHA NGOEN-PO	Epipactis	Orchid	WP	79	3073	1994
A-WU-CHE		Crassu	WP	40	4613	1995
AM-BU MENDO	Myricaria	Tamari	Fl	140	4674	1995
AM-BU SING	Myricaria rosea W.W. Smith ?	Tamari	Stm	131	4677	1995
AOM-BU-SHING*	Myricaria rosea W.W. Smith ?	Tamari	Stm		3084	1994
AU-SU*	Coriandrum sativum L.	Umbell	WP		3101	1994
BA-SHA-KA	Dicentra macrocapnos ?	Papave	WP		3049	1994
BHA-SHA-KA*	Lagotis cashmeriana Rupr. ?	Scroph	WP		3103	1994
BHA-SHA-KA*	Lagotis cashmeriana Rupr. ?	Scroph	WP		3908	1994
BHO-DO-WA	Cortia depressa C.Norman	Umbell	WP	120	4584	1995
BHONG-KAR**	Aconitum	Ranunc	WP		3901	1994
BONG-KAR	Aconitum	Ranunc	WP		3901	1994
BONG-KAR	Aconitum	Ranunc	WP		3110	1994
BU-SHU-HANG SHEMA*	Medicago falcata L. ?	Legumi	WP		4634	1995
BU-SU-HANG	Medicago falcata L. ?	Legumi	WP	73	3090	1994
BYS-RGOD-SPO*	Delphinium brunonianum Royle	Ranunc	WP		2293	1993
CHA-BU-CHE	Nepeta hindostana Haines	Labiata	WP		4525	1995
CHA-CHENYOK*	Ranunculus	Ranunc	WP	99	3039	1994
CHA-HUNG-LEN	Bistorta affinis Greene	Polygo	WP	87	3923	1994
CHA-KHU-JYANG*	Equisetum	Equise	WP	174	4570	1995
CHA-KHU-SHANG	Equisetum	Equise	WP	174	4570	1995
CHA-KYU-PHO	Thalictrum	Ranunc	WP	102	4557	1995
CHA-LU-DE DORJE	Ixelis ?	Compos	WP	25	4597	1995
CHA-SHUNG LAK-PU		Crucif	WP	45	4546	1995
CHA-THIK	Dicranostigma lactucoides Hook. f. & Thoms.	Papave	WP	81	4600	1995
CHA-TUE DORJE	Codonopsis convolvulacea Kurz	Campan	WP	6	4669	1995
CHA-WA		Umbell ?	Rh	160	4589	1995
CHA-WA		Umbell ?	Rt	170	3045	1994
CHA-WO*		Umbell ?	Rt	170	3045	1994
CHA-WOLSE	Chenopodium foliolosum Asch.	Chenop	WP	9	4599	1995
CHAK-DOR TA-NU*	Gentianella paludosa H. Sm.	Gentia	WP		3042	1994
CHAK-DOR-KUN*	Gentianella paludosa H. Sm.	Gentia	WP		3042	1994
CHAK-TIGK*	Halenia elliptica D. Don	Gentia	WP	57	3055	1994
CHAK-TIK	Halenia elliptica D. Don	Gentia	WP		3055	1994
CHAK-TIK	Halenia elliptica D. Don	Gentia	WP		4587	1995
CHAM-KU	Lamium ?	Labiata	WP	68	4639	1995
CHANG-TSER NHUCK-POH*	Morina longifolia Wall. ex DC.	Dipsac	WP	47	4649	1995
CHAR-KOE-PE	Delphinium brunonianum Royle	Ranunc	WP	98	4527	1995
CHAR-NGO*	Meconopsis horridula Hook. f. & Thoms.	Papave	WP		3114	1994
CHAY-TSAH**	Ranunculus acris ?	Ranunc	WP		4559	1995
CHE-CHA*	Ranunculus acris ?	Ranunc	WP		4559	1995
CHE-CHA-PHO	Ranunculus	Ranunc	WP	100	4646	1995
CHE-DHUM*	Saussurea graminifolia Wall. ex DC.	Compos	WP		4579	1995
CHE-DI	Ephedra pachyclada Boiss.	Ephedr	WP	49	3038	1994
CHI-CHER-MU	Morina ?	Dipsac	WP	46	4643	1995

CHI-CHIR-PHO	<i>Arctium lappa</i> L.	Compos	WP	12	4662	1995
CHOM-CHA NAKPO*	<i>Rheum australe</i> D. Don	Polygo	Rt		3122	1994
CHOM-ZA	<i>Rheum australe</i> D. Don	Polygo	Rt	169	4659	1995
CHU-RU-PA	<i>Hydrocotyle</i> ?	Umbell	WP	124	4673	1995
CHUCK-THEEK RAH-GOH-MAH*	<i>Halenia elliptica</i> D. Don	Gentia	WP		4587	1995
CHUCK-THEEK**	<i>Halenia elliptica</i> D. Don	Gentia	WP		3055	1994
CHUM-TSA*	<i>Rheum australe</i> D. Don	Polygo	Rt		3122	1994
CHYAK-TIK-NAK	<i>Gentianella paludosa</i> H. Sm.	Gentia	WP	56	4545	1995
DA-LI KARPU	<i>Rhododendron lepidotum</i> Wall. ex G. Don	Ericac	Fl-Stm	149	4676	1995
DA-LI MARPO	<i>Rhododendron lepidotum</i> Wall. ex G. Don	Ericac	Stm		3082	1994
DA-LI*	<i>Rhododendron anthopogon</i> D. Don	Ericac	Fl-Stm		2298	1993
DA-LI*	<i>Rhododendron anthopogon</i> D. Don	Ericac	Fl-Stm		3060	1994
DAH-WAH**	<i>Arisaema jacquemontii</i> Blume ?	Aracea	Tb	173	4633	1995
DALE-NAK*	<i>Rhododendron lepidotum</i> Wall. ex G. Don	Ericac	WP		4657	1995
DALI-KAR MENDO	<i>Rhododendron anthopogon</i> D. Don	Ericac	Fl-Stm	148	4666	1995
DAMEN-CHA-KYU	<i>Thalictrum platycarpum</i> Hook. f. et Thoms. ?	Ranunc	WP	104	4550	1995
DAY-GAH**	<i>Thlaspi arvense</i> L.	Crucif	WP	44	3100	1994
DAY-GAH**	<i>Thlaspi arvense</i> L.	Crucif	WP		4594	1995
DE-GA	<i>Thlaspi arvense</i> L.	Crucif	WP		4594	1995
DEZ-GA*	<i>Thlaspi arvense</i> L.	Crucif	WP	44	3100	1994
DHA-GHA*	<i>Thlaspi arvense</i> L.	Crucif	WP	44	3100	1994
DHAH-LHEE**	<i>Rhododendron anthopogon</i> D. Don	Ericac	Fl-Stm	148	4666	1995
DHALE-NAK*	<i>Rhododendron lepidotum</i> Wall. ex G. Don	Ericac	WP		4657	1995
DHE-MA	<i>Iris decora</i> Wall. ?	Iridac	WP	65	4593	1995
DHO-WA	<i>Arisaema jacquemontii</i> Blume ?	Aracea	Tb	173	4633	1995
DO-CHUNG-SHI SHEMA		stone	stone	176	4635	1995
DRA-GA*	<i>Anemone rivularis</i> Buch.-Ham. ex DC.	Ranunc	WP		3061	1994
DRHAY-MA**	<i>Iris decora</i> Wall. ?	Iridac	WP	65	4593	1995
DRHUL-SHUCK**	<i>Cuscuta</i>	Convol	WP	37	4607	1995
DRU-CHAR	<i>Juniperus indica</i> Bertol. ?	Cupres	Stm	134	3094	1994
DUL-SHAK	<i>Cuscuta</i>	Convol	WP	37	4607	1995
E-MONG KAR-POH**	<i>Clematis tibetana</i> Kuntse	Ranunc	Stm		3091	1994
E-MONG NHUCK-POH**	<i>Clematis tibetana</i> Kuntse	Ranunc	WP	96	4644	1995
GA-DRA*		Zingiv	Rt		3079	1994
GAH-KYAH**		Zingiv	Rt		3079	1994
GAH-THEEK**	<i>Androsace sarmentosa</i> ?	Saxifr	WP	159	3109	1994
GAN-GA-CHUNG*	<i>Gentiana bryoides</i> Burkill ?	Gentia	WP		4552	1995
GAN-SUR MENDOK	<i>Eriophyton wallichii</i> Benth.	Labiata	WP	67	4606	1995
GANG-KOOR-MO	<i>Eriophyton wallichii</i> Benth.	Labiata	WP		3066	1994
GANG-SKUR*	<i>Eriophyton wallichii</i> Benth.	Labiata	WP		2292	1993
GEN-DEN BA-DAR	<i>Anaphalis triplinervis</i> C.B. Clarke	Compos	WP	11	3054	1994
GEN-DA GATRA*	<i>Anaphalis triplinervis</i> C.B. Clarke	Compos	WP	11	3054	1994
GEN-DEN BA-DAR*	<i>Anaphalis triplinervis</i> C.B. Clarke	Compos	WP	11	3054	1994
GHA-KYE		Zingiv	Rt		3079	1994
GHA-TIK	<i>Androsace sarmentosa</i> ?	Saxifr	WP	159	3109	1994
GHEN-DA BA-TA	<i>Aster</i> ?	Compos	WP	18	4582	1995
GON-GER		Umbell	WP	122	4533	1995
GYA-KHUR	<i>Silene</i>	Caryop	WP	7	4553	1995
GYA-SHUN LHA-KMA-CHEN	<i>Cassiope fastigiata</i> D. Don	Ericac	WP	50	3044	1994
HA-BHU-NGOK*	<i>Myricaria</i>	Tamari	Fl-S		3107	1994
HONG-LEN*	<i>Bistorta affinis</i> Greene	Polygo	WP		3051	1994
HONG-LEN*	<i>Picrorhiza scrophulariiflora</i> Pennell	Scroph	Rh		3910	1994
HONG-LEN*	<i>Picrorhiza scrophulariiflora</i> Pennell	Scroph	Rh		4680	1994
HONG-LHEN**	<i>Lagotis cashmeriana</i> Rupr. ?	Scroph	WP	110	4568	1995
HONG-LHEN**	<i>Picrorhiza scrophulariiflora</i> Pennell	Scroph	Rh	158	4562	1995

ネパール王国のムクチナート伝統医学病院で蒐集されたチベット薬物

HUNG-LEN	<i>Picrorhiza scrophulariiflora</i> Pennell	Scroph	Rh	158	4562	1995
I-MUNG-KARPO	<i>Clematis tibetana</i> Kuntze	Ranunc	WP	96	4644	1995
JA-GOEN-POE	<i>Saussurea graminifolia</i> Wall. ex DC.	Compos	WP	26	3115	1994
JA-GYON-POE	<i>Saussurea</i> ?	Compos	WP	27	3063	1994
JA-KANG-METHO	<i>Delphinium</i>	Ranunc	WP	97	3072	1994
JA-PO-TSE-TSE*	<i>Nepeta hindostana</i> Haines	Labiata	WP	69	3064	1994
JA-PO-TSE-TSE*	<i>Nepeta hindostana</i> Haines	Labiata	WP		3904	1994
JAH-KANG**	<i>Delphinium</i>	Ranunc	WP	97	3072	1994
JAHR-PHEN CHU-TZEY**	<i>Epilobium</i>	Onagra	WP		3098	1994
JHA-GOE-POE SHOK*	<i>Saussurea</i> ?	Compos	WP	27	3063	1994
JHA-KEY NYOEN*	<i>Delphinium</i>	Ranunc	WP	97	3072	1994
JHA-RAB	<i>Elsholtzia</i> ?	Labiata	WP	66	3078	1994
JHA-WO-CHE*	<i>Nepeta hindostana</i> Haines	Labiata	WP	69	3064	1994
JHA-WO-CHE*	<i>Nepeta hindostana</i> Haines	Labiata	WP		3904	1994
JHANG-GOE-POE*	<i>Saussurea graminifolia</i> Wall. ex DC.	Compos	WP	26	3115	1994
JHI-CHAR	<i>Arctium lappa</i> L.	Compos	Fl		3057	1994
JHIP-CHA-MO	<i>Salvia</i>	Labiata	WP	72	3053	1994
JI-MONG*	<i>Clematis tibetana</i> Kuntze	Ranunc	Stm		3091	1994
KANG-JIK	<i>Ophioglossum</i>	Ophiog	WP	175	4625	1995
KE-CE METHO	<i>Ranunculus</i>	Ranunc	WP	99	3039	1994
KECE-METHO*	<i>Ranunculus acris</i> ?	Ranunc	WP	99	3039	1994
KER-PA	<i>Berberis</i>	Berber	Stm	130	3083	1994
KHAM-RU-TA		?	Rt	165	4642	1995
KHE-NAK-SHEN	<i>Artemisia capillaris</i> Thunb.	Compos	WP		4671	1995
KHEN-GAR	<i>Artemisia sieversiana</i> Willd.	Compos	WP	17	4648	1995
KHEN-GYA-SHEN*	<i>Artemisia capillaris</i> Thunb.	Compos	WP	14	4668	1995
KHEN-KAR	<i>Artemisia</i> ?	Compos	WP		3087	1994
KHEN-MAR	<i>Artemisia capillaris</i> Thunb.	Compos	WP		3106	1994
KHEN-MAR	<i>Artemisia capillaris</i> Thunb.	Compos	WP		3903	1994
KHEN-MAR	<i>Artemisia capillaris</i> Thunb.	Compos	WP		4661	1995
KHEN-MAR MO*	<i>Artemisia capillaris</i> Thunb.	Compos	WP		4664	1995
KHEN-MAR NAK	<i>Artemisia roxburghiana</i> Besser	Compos	WP	16	4543	1995
KHEN-SER	<i>Tanacetum nubigenum</i> Wall. ex DC.	Compos	WP	34	4575	1995
KHENAK	<i>Rabdosia pharica</i> Hara	Labiata	WP	70	4535	1995
KHIL-CHE	<i>Gentiana robusta</i> King ex Hook. f.	Gentia	WP	52	4621	1995
KHO-RFUK SHENPA	<i>Artemisia</i>	Compos	WP	13	3117	1994
KHUR-TIK	<i>Gentianella moorcroftiana</i> Airy Shaw	Gentia	WP	55	4564	1995
KHYIL-CE NAG-PO*	<i>Gentiana robusta</i> King ex Hook. f.	Gentia	WP		3071	1994
KHYIL-CHE-TSE*	<i>Gentiana robusta</i> King ex Hook. f.	Gentia	WP		3906	1994
KHYIL-TSE*	<i>Gentiana robusta</i> King ex Hook. f.	Gentia	WP		3906	1994
KI-CHE KAR-PO	<i>Gentiana</i>	Gentia	WP		3085	1994
KIMDO	<i>Sophora moorcroftiana</i> Benth. var. <i>nepalensis</i>	Legumi	Fr	153	4601	1995
KIR-KOE LHO-MA	<i>Mahonia napaulensis</i> DC. ?	Berber	Lf	135	4656	1995
KUR-TIK		Gentia	WP		4647	1995
KYI-CHE SHAK*	<i>Gentiana robusta</i> King ex Hook. f.	Gentia	WP		3071	1994
KYI-CHE SHAK*	<i>Gentiana robusta</i> King ex Hook. f.	Gentia	WP		3906	1994
KYORWA*	<i>Berberis</i>	Berber	Stm	130	3083	1994
LANG-MAR CHUNGA*	<i>Pedicularis gracilis</i> Wall. ex Benth.	Scroph	WP		4578	1995
LANG-NA SHEBA	<i>Pedicularis gracilis</i> Wall. ex Benth.	Scroph	WP	112	4566	1995
LANG-NA SHEMBA	<i>Pedicularis pennelliana</i> Tsoong	Scroph	WP	115	4574	1995
LANG-NA-MAR*	<i>Pedicularis gracilis</i> Wall. ex Benth.	Scroph	WP		4534	1995
LHA-LANG	<i>Pedicularis</i>	Scroph	WP	113	4663	1995
LHEE-GAH-DHOOR**	<i>Geranium pratense</i> L.	Gerani	WP	63	4573	1995
LHOMA-MENDOK*	<i>Delphinium</i>	Ranunc	WP		4586	1995
LHOO-DU DHOR-JAY**	<i>Codonopsis nervosa</i> ?	Campan	WP	5	3069	1994

LHOOK-RHOO SAYR-POH**	<i>Pedicularis longiflora</i> Rudolph var. <i>tubiformis</i>	Scroph	Fl	141	4612	1995
LI-GA-DUR*	<i>Bistorta vivipara</i> S.F. Gray	Polygo	Rh		3900	1994
LI-GA-DUR*	<i>Bistorta vivipara</i> S.F. Gray var. <i>jaljalensis</i>	Polygo	Rh		3096	1994
LI-GA-TOR	<i>Bistorta amplexicaulis</i> Greene	Polygo	Rh	156	3922	1994
LI-GA-ZHUR*	<i>Bistorta vivipara</i> S.F. Gray var. <i>jaljalensis</i>	Polygo	Rh		2296	1993
LI-KHA-TUR	<i>Geranium pratense</i> L.	Gerani	WP	63	4573	1995
LOK-RUL	<i>Pedicularis</i>	Scroph	WP		3111	1994
LOOK-GYU SERPO*	<i>Pedicularis longiflora</i> Rudolph	Scroph	WP	114	3089	1994
LOOK-RU-MO*	<i>Pedicularis</i>	Scroph	WP		3111	1994
LU-DUE-DORJE	<i>Codonopsis nervosa</i> ?	Campan	WP	5	3069	1994
LU-DUE-KAR KENPA	<i>Sonchus</i>	Compos	WP	31	3119	1994
LU-TI DORCHI SHEMA		?	WP	126	4539	1995
LUK-RU SER-PO	<i>Pedicularis longiflora</i> Rudolph	Scroph	WP	114	3089	1994
LUK-RU SER-PU	<i>Pedicularis longiflora</i> Rudolph var. <i>tubiformis</i>	Scroph	Fl	141	4612	1995
LUNG-DYUEN DORJI*	<i>Codonopsis nervosa</i> ?	Campan	WP	5	3069	1994
MA-BU PA-TA	<i>Inula</i> ?	Compos	Fl		3120	1994
MA-MA NAGMU	<i>Salvia</i>	Labiata	WP		4572	1995
MA-MA ZIP-CHI	<i>Salvia</i>	Labiata	Fl-Stm	150	4547	1995
MA-NU PA-TA	<i>Inula grandiflora</i> Willd. ?	Compos	Fl	139	4591	1995
MAY-THOCK GANG-LHAH**	<i>Saussurea graminifolia</i> Wall. ex DC.	Compos	WP		4579	1995
MI-KA		Malvac ?	WP		4651	1995
MIK-MEN CHU-R	<i>Geranium</i>	Gerani	WP		3104	1994
MIK-MEN CHU-RI	<i>Geranium donianum</i> Sweet ?	Gerani	WP	62	3902	1994
MIK-MEN CHU-RI*	<i>Geranium donianum</i> Sweet ?	Gerani	WP		3050	1994
MING-CHEN NAK-PO	<i>Clemathodium</i> sp.	Compos	WP	20	4641	1995
MING-CHEN NHUCK-POH**	<i>Clemathodium</i> sp.	Compos	WP	20	4641	1995
MING-ME CHUNG-RI*	<i>Geranium donianum</i> Sweet ?	Gerani	WP		3050	1994
MING-ME-CHUNG LI*	<i>Geranium donianum</i> Sweet ?	Gerani	WP	62	3902	1994
MING-MEN CHU-RIN	<i>Geranium</i>	Gerani	WP	60	4542	1995
MING-MER SANGY CHUNG-RING*	<i>Geranium</i>	Gerani	WP		3104	1994
MING-MIN-CHURIN	<i>Erodium cicutarium</i> L'Her.	Gerani	WP	59	4626	1995
NA-RAM	<i>Prunella vulgaris</i> L.	Labiata	WP	71	3067	1994
NA-RAK NA-RAM*	<i>Prunella vulgaris</i> L.	Labiata	WP	71	3067	1994
NE-LLO*	<i>Polygonum</i> ?	Polygo	WP	91	3105	1994
NGA-LO	<i>Persicaria nepalensis</i> H. Gross ?	Polygo	WP	89	4556	1995
NGA-LO CHA-WA		?	Rt	162	4636	1995
NGA-LO GHE-PO	<i>Oxyria digyna</i> Hill	Polygo	WP	88	4563	1995
NGA-LO GHE-PO*	<i>Oxyria digyna</i> Hill	Polygo	WP	88	4563	1995
NGE-LO GHE-PO*	<i>Oxyria digyna</i> Hill	Polygo	WP	88	4563	1995
NGEN-THULBA	<i>Dracocephalum heterophyllum</i> Benth.	Labiata	Fl-S	146	4567	1995
NGER-SHING*	<i>Asparagus racemosus</i> Willd.	Liliac	Rt	167	4602	1995
NGHO-TRHEEN**	<i>Thalictrum</i>	Ranunc	WP	103	3102	1994
NGIR-SING	<i>Asparagus fillicinus</i> Buch.-Ham.ex D. Don	Liliac	WP	77	4521	1995
NGO-DUKN-GONG*	<i>Epilobium</i>	Onagra	WP		3098	1994
NGO-GA-DHIK NAK-PU		Crassu	WP	39	4610	1995
NGO-GA-TIK*	<i>Androsace</i>	Primul	WP	92	3062	1994
NGO-KHUNG-DER		fern	Rh	171	4672	1995
NGO-TAK SHA-SHOP*	<i>Oxytropis mollis</i> Royle ex Benth.	Legumi	WP		3077	1994
NGO-TAK-SHA	<i>Oxytropis mollis</i> Royle ex Benth.	Legumi	WP	74	4560	1995
NGO-THUN-NGUNG	<i>Epilobium</i>	Onagra	WP	78	4569	1995
NGO-TIN CHUNGWA*	<i>Thalictrum</i>	Ranunc	WP	103	3102	1994
NGO-TONGU-RI	<i>Thalictrum</i>	Ranunc	WP	101	4541	1995
NGON-BHOO**	<i>Leontopodium</i> ?	Compos	WP	28	4655	1995
NGON-BU	<i>Leontopodium</i> ?	Compos	WP	28	4655	1995
NGO-TIN DONG*	<i>Thalictrum</i>	Ranunc	WP		3065	1994

ネパール王国のムクチナート伝統医学病院で蒐集されたチベット薬物

NYA-GOETH*	<i>Artemisia sieversiana</i> Willd. ?	Compos	WP		3047	1994
NYA-LO	<i>Polygonum</i> ?	Polygo	WP	91	3105	1994
NYAH-LOH**	<i>Polygonum</i> ?	Polygo	WP	91	3105	1994
NYAY-SHING**	<i>Asparagus</i>	Liliac	Rt		3116	1994
NYE-SHING	<i>Asparagus</i>	Liliac	Rt		3116	1994
NYEN-DUL-PA*	<i>Dracocephalum heterophyllum</i> Benth.	Labiata	Fl-S		3052	1994
NYEN-THUL-WA*	<i>Dracocephalum heterophyllum</i> Benth.	Labiata	Fl-S		3052	1994
NYER-SHING*	<i>Asparagus</i>	Liliac	Rt		3116	1994
NYO-TAK-SHA*	<i>Oxytropis mollis</i> Royle ex Benth.	Legumi	WP		3077	1994
NYOEN-A-TRONG	<i>Silene</i> ?	Caryop	WP	8	3108	1994
NYOEN-DUNG-NUNG*	<i>Epilobium</i>	Onagra	WP		3098	1994
NYOEN-TRIN	<i>Thalictrum</i>	Ranunc	WP		3065	1994
NYOEN-TRIN	<i>Thalictrum</i>	Ranunc	WP	103	3102	1994
NYON-GA-TIGK	Androsace	Primul	WP	92	3062	1994
PA-MO CHA-TIK	<i>Saussurea</i>	Compos	WP		4640	1995
PA-SHYA-KHA	<i>Dicentra macrocapnos</i> ?	Papave	WP	80	4548	1995
PA-YA*	<i>Lancea tibetica</i> Hook. f. & Thoms.	Scroph	WP		4522	1995
PA-YA-SHING	<i>Viola</i>	Violac	WP	125	4532	1995
PA-YAK	<i>Lancea tibetica</i> Hook. f. & Thoms.	Scroph	WP	109	3048	1994
PA-YAK*	<i>Lancea tibetica</i> Hook. f. & Thoms.	Scroph	WP		3905	1994
PAH-YAK TZA-WAH**	<i>Lancea tibetica</i> Hook. f. & Thoms.	Scroph	WP	109	3048	1994
PAN-GEN NGONBU	<i>Gentiana bryoides</i> Burkill ?	Gentia	WP	54	4645	1995
PAN-GEN THA-WO	<i>Gentiana algida</i> Pallas	Gentia	WP	51	4595	1995
PANG-YAK*	<i>Lancea tibetica</i> Hook. f. & Thoms.	Scroph	WP	109	3048	1994
PANG-JE	<i>Pteroccephalus hookeri</i> (C.B. Clarke) Diels	Dipsac	WP	48	4571	1995
PANG-JI MIR-GE*	<i>Pteroccephalus hookeri</i> (C.B. Clarke) Diels	Dipsac	WP		4603	1995
PANG-POE	<i>Nardostachys grandiflora</i> DC.	Valeri	Rh	161	4658	1995
PANG-POE	<i>Nardostachys grandiflora</i> DC.	Valeri	Rh		3081	1994
PANG-RAM	<i>Bistorta macrophylla</i> Sojak	Polygo	WP	85	3919	1994
PANG-RAM LHO-WA	<i>Bistorta vivipara</i> S.F. Gray var. <i>jaljalensis</i>	Polygo	WP	86	3920	1994
PANG-RAM-PHO	<i>Bistorta vivipara</i> S.F. Gray var. <i>jaljalensis</i>	Polygo	Rh	157	3921	1994
PANG-TRIK		lichen	lichen	178	3092	1994
PANG-TSEN PHOO-RHOO**	<i>Eriophyton wallichii</i> Benth.	Labiata	WP		3066	1994
PANG-TSI	<i>Pteroccephalus hookeri</i> (C.B. Clarke) Diels	Dipsac	Rt	163	3086	1994
PANG-YAK*	<i>Lancea tibetica</i> Hook. f. & Thoms.	Scroph	WP		3905	1994
PAR-PA-TA	<i>Geranium</i>	Gerani	WP	61	4616	1995
PEN-DHA-KA-RI		?	Stm	129	4555	1995
PHON-GHAR*	<i>Aconitum</i>	Ranunc	WP	94	4536	1995
RA-DUG-PA*	<i>Oxytropis williamsii</i> Vassilicz.	Legumi	WP		3058	1994
RA-MNGE	<i>Polygonatum cirrhifolium</i> Royle ?	Liliac	Rh	155	4660	1995
RA-NYER*	<i>Polygonatum cirrhifolium</i> Royle ?	Liliac	Rh		3124	1994
RA-NYOR*	<i>Polygonatum cirrhifolium</i> Royle ?	Liliac	Rh		3124	1994
RAG-DIK-PA	<i>Oxytropis williamsii</i> Vassilicz.	Legumi	WP	75	4611	1995
RAH-NYAY**	<i>Polygonatum cirrhifolium</i> Royle ?	Liliac	Rh		3124	1994
RAK-SHUK*	<i>Oxytropis williamsii</i> Vassilicz.	Legumi	WP		3058	1994
RAN-GNEN-NYOEN-PO*	<i>Gentiana algida</i> Pallas	Gentia	WP		3075	1994
RAN-GYEN NGOWOTRI*	<i>Gentiana algida</i> Pallas	Gentia	WP		3075	1994
RANG-YEN TRO-LO		?	WP	128	3040	1994
RE-KYUN	<i>Cyananthus</i> ?	Campan	WP	4	4588	1995
RE-KYOEN*	<i>Allium</i>	Liliac	WP	76	3043	1994
RI-KOK	<i>Allium</i>	Liliac	WP	76	3043	1994
RI-RAL	fern	fern	WP	172	4615	1995
RONG-NGULU	<i>Aconogonum alpinus</i> Schur ?	Polygo	WP	84	4638	1995
SA-GHO*	<i>Capsella bursa-pastoris</i> Medius	Crucif	WP		3099	1994
SA-GU	<i>Bidens tripartita</i> L.	Compos	WP	19	4540	1995

SAE-WE-METHO*	<i>Rosa sericea</i> Lindl. ?	Rosace	Fl-P		3037	1994
SAN-ZUM SHEMBA	<i>Erigeron multiradiatus</i> C.B. Clarke	Compos	WP	22	4679	1995
SANG-CHI KAR-PO*	<i>Primula</i> ?	Primul ?	WP		3986	1994
SANG-CHI KARPO*	<i>Rubia manjith</i> Roxb. Ex Fleming	Rubiace	WP		3121	1994
SANG-DHIK	<i>Swertia</i>	Gentia	WP	58	4538	1995
SANG-DIK RANGO*	<i>Gentianella moorcroftiana</i> Airy Shaw	Gentia	WP		3138	1994
SANG-DIK-MO	<i>Gentianella</i> ?	Gentia	WP	53	4565	1995
SANG-JE KA-RU SHEMBA	<i>Galium</i>	Rubiace	WP	107	4537	1995
SANG-JI KAR-PU	<i>Rubia manjith</i> Roxb. ex Fleming	Rubiace	WP	108	4581	1995
SANG-JI NAK-PU		Compos	WP	35	4526	1995
SANG-TIK*	<i>Swertia</i>	Gentia	WP		3118	1994
SE-MA KAR-PU	<i>Astragalus</i> ?	Legumi	Rt	166	4604	1995
SEN-DU SHEMBA	<i>Punica granatum</i> L.	Punica	Fr	152	4618	1995
SEN-SER MENDHOK	<i>Pedicularis</i>	Scroph	Fl	142	4605	1995
SER-GYED*	<i>Verbascum thapsus</i> L.	Scroph	Lf	117	3070	1994
SER-JAY	<i>Verbascum thapsus</i> L.	Scroph	Lf	117	3070	1994
SHA-MU-DUM	<i>Lanopila</i>	mashr.	FB	179	4531	1995
SHA-RA		lichen	lichen	177	4628	1995
SHANG-DREEL KAR-PO ?**	<i>Primula</i> ?	Primul ?	WP		3986	1994
SHANG-THIL KAR-PU	<i>Primula</i>	Primul	WP	93	3140	1994
SHEL-KA-TA-SHOEN		?	Rt		3123	1994
SHI-NDA		lichen	lichen		4630	1995
SHO-MANG	<i>Senecio corymbosoides</i> DC. ?	Compos	WP	30	4529	1995
SHO-MANG PHO	<i>Cremnathodium arnicoides</i> E. Good ?	Compos	WP	21	4558	1995
SHU-LAB*	<i>Picrorhiza scrophulariiflora</i> Pennell	Scroph	Rh		3910	1994
SHU-LAB*	<i>Picrorhiza scrophulariiflora</i> Pennell	Scroph	Rh		4680	1994
SHU-LAB*	<i>Bistorta affinis</i> Greene	Polygo	WP		3051	1994
SHUNG-KHEN		Theace ?	Lf	137	4670	1995
SHUR-CHI-NAK	<i>Polygonum aviculare</i> ?	Polygo	WP	90	4554	1995
SI-PI-MENDOK	<i>Rosa sericea</i> Lindl.	Rosace	Fl-P	144	4623	1995
SING-SHA	<i>Lanopila</i>	mashr.	FB	180	4678	1995
SIP-KHA	<i>Anemone rivularis</i> Buch.-Ham. ex DC.	Ranunc	WP		3061	1994
SO-GA-PA*	<i>Capsella bursa-pastoris</i> Medius	Crucif	WP		3099	1994
SO-LO	<i>Arabis</i> ?	Crucif	WP	41	4577	1995
SO-YI-RTOG	<i>Rosa macrophylla</i> Lindl.	Rosace	Fl-P	143	2297	1993
SOUP-KAH**	<i>Anemone rivularis</i> Buch.-Ham. ex DC.	Ranunc	WP	95	4551	1995
SU-KHA	<i>Capsella bursa-pastoris</i> Medius	Crucif	WP	42	4653	1995
SUM-DIK SHEMBA	<i>Sonchus</i> ?	Compos	WP	33	4622	1995
SUP-DE	<i>Anemone rivularis</i> Buch.-Ham. ex DC.	Ranunc	Sd	154	4624	1995
SUP-KHA	<i>Anemone rivularis</i> Buch.-Ham. ex DC.	Ranunc	WP	95	4551	1995
SUP-KHA	<i>Anemone rivularis</i> Buch.-Ham. ex DC.	Ranunc	WP		4650	1995
TA-BU-RAM*	<i>Saussurea fastuosa</i> Sch.-Bip.	Compos	WP	29	3125	1994
TA-MIK		Compos	Lf	136	4590	1995
TA-PAL	<i>Anaphalis contorta</i> Hook. f.	Compos	WP	10	3139	1994
TA-TIGK*	<i>Androsace sarmentosa</i> ?	Saxifr	WP	159	3109	1994
TAG-DOE DORJE	<i>Sonchus</i> ?	Compos	WP	32	4596	1995
TAK-CHAR*	<i>Salsola</i> ?	Chenop	WP		3088	1994
TAK-CHIR SHEMBA	<i>Salsola nepalensis</i> Grub.	Chenop	WP	2	4528	1995
TAK-GHE	<i>Sedum filipes</i> Hemsl.	Crassu	WP	38	4609	1995
TAK-NGU	<i>Hypericum</i>	Hyperic	WP	64	4637	1995
TAK-TSER	<i>Salsola</i> ?	Chenop	WP		3088	1994
TAN-GYUN	<i>Pleurospermum</i> ?	Umbell	Fl	145	4544	1995
TAP-SANG PAR-BA-TA		?	WP	127	4629	1995
TAR-BU	<i>Saussurea fastuosa</i> Sch.-Bip.	Compos	WP	29	3125	1994
TE-YAN-KHU		Scroph ?	WP	116	4632	1995

ネパール王国のムクチナート伝統医学病院で蒐集されたチベット薬物

THA-BO	Cardamine ?	Crucif	WP	43	4608	1995
THA-RAM	Plantago major L. ?	Planta	WP	83	4585	1995
THA-RAM	Plantago major L. ?	Planta	Fl-S		3112	1994
THAK PHA-SHYA-KHA	Lagotis cashmeriana Rupr. ?	Scroph	WP	110	4568	1995
THAN-NU		Crassu	Rt	164	4675	1995
THANG-DUM		Compos	WP	36	4667	1995
THANG-SHING LO-MA	Pinus wallichiana A.B. Jackson	Pinace	Lf	133	3113	1994
THAR-DRUM-CHA	Saussurea ?	Compos	Rt		3095	1994
THAR-NU*		Crassu	Rt		3093	1994
THAR-NUG*		Crassu	Rt		3093	1994
THEL-RAM*	Plantago major L. ?	Planta	Fl-S		3112	1994
THIK-DON NUR-BU	Ixelis	Compos	WP	24	4523	1995
THOL-TA SA-DIN	Potentilla ?	Rosace	WP	106	4617	1995
THU-KI-NGING PA-YA-SHING*	Viola	Violac	WP	125	4532	1995
TRAH-ZANG ?**	Dicranostigma lactucoides Hook. f. & Thoms. ?	Papave	WP		3909	1994
TRHOO-NHUCK**	Heracleum lalii Norman ?	Umbell	WP	123	4580	1995
TRI-CHAR*	Dicranostigma lactucoides Hook. f. & Thoms.	Papave	WP		3046	1994
TRI-CHAR*	Dicranostigma lactucoides Hook. f. & Thoms. ?	Papave	WP		3909	1994
TSA-SHU-JANG*	Equisetum	Equise	WP		3041	1994
TSA-THRI*		Papave ?	WP		3036	1994
TSA-TRING BA-MO-SHA		Papave ?	WP		3036	1994
TSAYR-NGON**	Meconopsis horridula Hook. f. & Thoms.	Papave	WP		3114	1994
TSE-DHOOM**	Ephedra pachyclada Boiss.	Ephedr	WP	49	3038	1994
TU-NA		Umbell	WP	121	4654	1995
TU-NAK	Heracleum lalii Norman ?	Umbell	WP	123	4580	1995
TU-NAK CHUNGA	Bupleurum gracillimum Klotzsch	Umbell	WP	118	3219	1994
TU-NAK-PHO		Umbell	Rt		4665	1995
TUG-MU YONG	Vincetoxicum hirundinaria Medic.	Asclep	WP	1	4524	1995
TZOH**	Rubia manjith Roxb. Ex Fleming	Rubiace	WP		3121	1994
TZOH**	Rubia manjith Roxb. Ex Fleming	Rubiace	WP	108	4581	1995
U-PAL	Erigeron uniflorus L.	Compos	WP	23	4576	1995
U-PAL RALDI-MA	Erigeron bellidioides Benth. ?	Compos	Fl	138	4627	1995
WANG-LUCK**	Orchis latifolia L. var. incarnata	Orchid	Rt	168	4620	1995
WHOL-MU SE	Paris polyphylla Smith	Liliac	Fr	151	4561	1995
WOMB-BHOO**	Myricaria	Tamari	Fl	140	4674	1995
WOMB-BHOO**	Myricaria rosea W.W. Smith ?	Tamari	Stm		3084	1994
WONG-LA	Orchis latifolia L. var. incarnata	Orchid	Rt	168	4620	1995
WONG-RIL SHENBA*	Epipactis	Orchid	WP		4592	1995
WU-SU	Coriandrum sativum L.	Umbell	WP		3101	1994
WU-SU	Coriandrum sativum L.	Umbell	WP	119	4652	1995
WUK-CHUK-SHEMBA	Potentilla	Rosace	WP	105	4614	1995
YA-KHIL-MA	Crysosplenium ?	Saxifr ?	WP	111	4631	1995
YAH-KYEE-MAH**	Crysosplenium ?	Saxifr ?	WP	111	4631	1995
YAR-SHING	Artemisia incisa Pamp.	Compos	WP	15	4530	1995
YU-KU SHINGAM SERCHI	Verbascum thapsus L.	Scroph	Fl-S	147	4549	1995
YUD-RUK DRUK	Gentiana ?	Gentia	WP		3059	1994
ZA-HUNG-LEN*	Bistorta affinis Greene	Polygo	WP	87	3923	1994
ZANG-THEEK**	Swertia	Gentia	WP	58	4538	1995
ZANG-TIGK	Swertia	Gentia	WP		3118	1994
ZANG-TIGK*	Pedicularis gracilis Wall. ex Benth.	Scroph	WP		3056	1994
ZANG-TSE-KAR-PO*	Primula ?	Primul ?	WP		3986	1994
ZANG-TSE-KAR-PO*	Rubia manjith Roxb. Ex Fleming	Rubiace	WP		3121	1994
ZYAR-BA	Cynoglossum	Boragi	WP	3	4583	1995

Table 2 : A PLANT NAME LIST OF TIBETAN CRUDE DRUGS
USED IN MUKTINATH TRADITIONAL MEDICAL CENTRE

SCIENTIFIC NAME	FAMILY	LOCAL NAME OF CRUDE DRUG	PART	P.No.	KAMP No.	YEAR
<i>Arisaema jacquemontii</i> Blume ?	Aracea	DHO-WA, DAH-WAH**	Tb	173	4633	1995
<i>Vincetoxicum hirundinaria</i> Medic.	Asclep	TUG-MU YONG	WP	1	4524	1995
<i>Berberis</i>	Berber	KER-PA, KYORWA*	Stm	130	3083	1994
<i>Mahonia napaulensis</i> DC. ?	Berber	KIR-KOE LHO-MA	Lf	135	4656	1995
<i>Cynoglossum</i>	Boragi	ZYAR-BA	WP	3	4583	1995
<i>Codonopsis convolvulacea</i> Kurz	Campan	CHA-TUE DORJE	WP	6	4669	1995
<i>Codonopsis nervosa</i> ?	Campan	LU-DUE-DORJE, LHOO-DU DHOR-JAY**	WP	5	3069	1994
<i>Codonopsis nervosa</i> ?	Campan	LUNG-DYUEN DORJI*	WP	5	3069	1994
<i>Cyananthus</i> ?	Campan	RE-KYUN	WP	4	4588	1995
<i>Silene</i>	Caryop	GYA-KHUR	WP	7	4553	1995
<i>Silene</i> ?	Caryop	NYOEN-A-TRONG	WP	8	3108	1994
<i>Chenopodium foliolosum</i> Asch.	Chenop	CHA-WOLSE	WP	9	4599	1995
<i>Salsola</i> ?	Chenop	TAK-TSER, TAK-CHAR*	WP		3088	1994
<i>Salsola nepalensis</i> Grub.	Chenop	TAK-CHIR SHEMBA	WP	2	4528	1995
<i>Anaphalis contorta</i> Hook. f.	Compos	TA-PAL	WP	10	3139	1994
<i>Anaphalis triplinervis</i> C.B. Clarke	Compos	GEN-DEN BA-DAR, GEN-DA GATRA*	WP	11	3054	1994
<i>Arctium lappa</i> L.	Compos	CHI-CHIR-PHO	WP	12	4662	1995
<i>Arctium lappa</i> L.	Compos	JHI-CHAR	Fl		3057	1994
<i>Artemisia</i>	Compos	KHO-RFUK SHENPA	WP	13	3117	1994
<i>Artemisia</i> ?	Compos	KHEN-KAR	WP		3087	1994
<i>Artemisia capillaris</i> Thunb.	Compos	KHEN-GYA-SHEN*	WP	14	4668	1995
<i>Artemisia capillaris</i> Thunb.	Compos	KHEN-MAR	WP		3106	1994
<i>Artemisia capillaris</i> Thunb.	Compos	KHEN-MAR	WP		3903	1994
<i>Artemisia capillaris</i> Thunb.	Compos	KHEN-MAR	WP		4661	1995
<i>Artemisia capillaris</i> Thunb.	Compos	KHEN-MAR MO*	WP		4664	1995
<i>Artemisia capillaris</i> Thunb.	Compos	KHE-NAK-SHEN	WP		4671	1995
<i>Artemisia incisa</i> Pamp.	Compos	YAR-SHING	WP	15	4530	1995
<i>Artemisia roxburghiana</i> Besser	Compos	KHEN-MAR NAK	WP	16	4543	1995
<i>Artemisia sieversiana</i> Willd.	Compos	KHEN-GAR	WP	17	4648	1995
<i>Artemisia sieversiana</i> Willd. ?	Compos	NYA-GOETH*	WP		3047	1994
<i>Aster</i> ?	Compos	GHEN-DA BA-TA	WP	18	4582	1995
<i>Bidens tripartita</i> L.	Compos	SA-GU	WP	19	4540	1995
<i>Clemanthodium</i> sp.	Compos	MING-CHEN NAK-PO	WP	20	4641	1995
<i>Cremanthodium arnicoides</i> E. Good ?	Compos	SHO-MANG PHO	WP	21	4558	1995
<i>Erigeron bellidioides</i> Benth. ?	Compos	U-PAL RALDI-MA	Fl	138	4627	1995
<i>Erigeron multiradiatus</i> C.B. Clarke	Compos	SAN-ZUM SHEMBA	WP	22	4679	1995
<i>Erigeron uniflorus</i> L.	Compos	U-PAL	WP	23	4576	1995
<i>Inula</i> ?	Compos	MA-BU PA-TA	Fl		3120	1994
<i>Inula grandiflora</i> Willd. ?	Compos	MA-NU PA-TA	Fl	139	4591	1995
<i>Ixelis</i>	Compos	THIK-DON NUR-BU	WP	24	4523	1995
<i>Ixelis</i> ?	Compos	CHA-LU-DE DORJE	WP	25	4597	1995
<i>Leontopodium</i> ?	Compos	NGON-BU, NGON-BHOO**	WP	28	4655	1995
<i>Saussurea</i> ?	Compos	JA-GYON-POE, JHA-GOE-POE SHOK*	WP	27	3063	1994
<i>Saussurea</i> ?	Compos	THAR-DRUM-CHA	Rt		3095	1994
<i>Saussurea fastuosa</i> Sch.-Bip.	Compos	TAR-BU, TA-BU-RAM*	WP	29	3125	1994
<i>Saussurea graminifolia</i> Wall. ex DC.	Compos	JA-GOEN-POE, JHANG-GOE-POE*	WP	26	3115	1994
<i>Saussurea graminifolia</i> Wall. ex DC.	Compos	CHE-DHUM*, MAY-THOCK GANG-LHAH**	WP		4579	1995
<i>Saussurea graminifolia</i> Wall. ex DC.	Compos	PA-MO CHA-TIK	WP		4640	1995
<i>Senecio crysanthemoides</i> DC. ?	Compos	SHO-MANG	WP	30	4529	1995

ネパール王国のムクチナート伝統医学病院で蒐集されたチベット薬物

Sonchus	Compos	LU-DUE-KAR KENPA	WP	31	3119	1994
Sonchus ?	Compos	TAG-DOE DORJE	WP	32	4596	1995
Sonchus ?	Compos	SUM-DIK SHEMA	WP	33	4622	1995
Tanacetum nubigenum Wall. ex DC.	Compos	KHEN-SER	WP	34	4575	1995
Cuscuta	Convol	DUL-SHAK, DRHUL-SHUCK**	WP	37	4607	1995
Sedum filipes Hemsl.	Crassu	TAK-GHE	WP	38	4609	1995
Arabis ?	Crucif	SO-LO	WP	41	4577	1995
Capsella bursa-pastoris Medius	Crucif	SU-KHA	WP	42	4653	1995
Capsella bursa-pastoris Medius	Crucif	SA-GHO*, SO-GA-PA*	WP		3099	1994
Cardamine ?	Crucif	THA-BO	WP	43	4608	1995
Thlaspi arvense L.	Crucif	DHA-GHA*, DEZ-GA*	WP	44	3100	1994
Thlaspi arvense L.	Crucif	DE-GA, DAY-GAH**	WP		4594	1995
Juniperus indica Bertol. ?	Cupres	DRU-CHAR	Stm	134	3094	1994
Morina ?	Dipsac	CHI-CHER-MU	WP	46	4643	1995
Morina longifolia Wall. ex DC.	Dipsac	A-CHAK CHERMA	WP	47	4649	1995
Morina longifolia Wall. ex DC.	Dipsac	CHANG-TSER NHUCK-POH*	WP	47	4649	1995
Pteroccephalus hookeri (C.B. Clarke) Diels	Dipsac	PANG-JE	WP	48	4571	1995
Pteroccephalus hookeri (C.B. Clarke) Diels	Dipsac	PANG-TSI	Rt	163	3086	1994
Pteroccephalus hookeri (C.B. Clarke) Diels	Dipsac	PANG-JI MIR-GE*	WP		4603	1995
Ephedra pachyclada Boiss.	Ephedr	CHE-DI, TSE-DHOOM**	WP	49	3038	1994
Equisetum	Equise	CHA-KHU-SHANG, CHA-KHU-JYANG*	WP	174	4570	1995
Equisetum	Equise	TSA-SHU-JANG*	WP		3041	1994
Cassiope fastigiata D. Don	Ericac	GYA-SHUN LHA-KMA-CHEN	WP	50	3044	1994
Rhododendron anthopogon D. Don	Ericac	DALI-KAR MENDO, DHAH-LHEE**	Fl-Stm	148	4666	1995
Rhododendron anthopogon D. Don	Ericac	DA-LI*	Fl-Stm		2298	1993
Rhododendron anthopogon D. Don	Ericac	DA-LI*	Fl-Stm		3060	1994
Rhododendron lepidotum Wall. ex G. Don	Ericac	DA-LI KARPU	Fl-Stm	149	4676	1995
Rhododendron lepidotum Wall. ex G. Don	Ericac	DA-LI MARPO	Stm		3082	1994
Rhododendron lepidotum Wall. ex G. Don	Ericac	DALE-NAK*, DHALE-NAK*	WP		4657	1995
Gentiana	Gentia	KI-CHE KAR-PO	WP		3085	1994
Gentiana ?	Gentia	YUD-RUK DRUK	WP		3059	1994
Gentiana algida Pallas	Gentia	PAN-GEN THA-WO	WP	51	4595	1995
Gentiana algida Pallas	Gentia	RAN-GNEN-NYOEN-PO*	WP		3075	1994
Gentiana algida Pallas	Gentia	RAN-GYEN NGOWOTRI*	WP		3075	1994
Gentiana bryoides Burkill ?	Gentia	PAN-GEN NGONBU	WP	54	4645	1995
Gentiana bryoides Burkill ?	Gentia	GAN-GA-CHUNG*	WP		4552	1995
Gentiana robusta King ex Hook. f.	Gentia	KHIL-CHE	WP	52	4621	1995
Gentiana robusta King ex Hook. f.	Gentia	KYI-CHE SHAK*, KHYIL-CE NAG-PO*	WP		3071	1994
Gentiana robusta King ex Hook. f.	Gentia	KHYIL-TSE*, KHYIL-CHE-TSE*	WP		3906	1994
Gentianella ?	Gentia	SANG-DIK-MO	WP	53	4565	1995
Gentianella moorcroftiana Airy Shaw	Gentia	KHUR-TIK	WP	55	4564	1995
Gentianella moorcroftiana Airy Shaw	Gentia	SANG-DIK RANGO*	WP		3138	1994
Gentianella paludosa H. Sm.	Gentia	CHYAK-TIK-NAK	WP	56	4545	1995
Gentianella paludosa H. Sm.	Gentia	CHAK-DOR-KUN*, CHAK-DOR TA-NU*	WP		3042	1994
Halenia elliptica D. Don	Gentia	CHAK-TIK, CHAK-TIGK*, CHUCK-THEEK**	WP	57	3055	1994
Halenia elliptica D. Don	Gentia	CHUCK-THEEK RAH-GOH-MAH*	WP		4587	1995
Swertia	Gentia	SANG-DHIK, ZANG-THEEK**	WP	58	4538	1995
Swertia	Gentia	ZANG-TIGK, SANG-TIK*, ZANG-THEEK**	WP		3118	1994
Erodium cicutarium L'Her.	Gerani	MING-MIN-CHURIN	WP	59	4626	1995
Geranium	Gerani	MING-MEN CHU-RIN	WP	60	4542	1995
Geranium	Gerani	MIK-MEN CHU-RE	WP		3104	1994
Geranium	Gerani	MING-MER SANGHEY CHUNG-RING*	WP		3104	1994
Geranium	Gerani	PAR-PA-TA	WP	61	4616	1995
Geranium donianum Sweet ?	Gerani	MIK-MEN CHU-RI, MING-ME-CHUNG LI*	WP	62	3902	1994
Geranium donianum Sweet ?	Gerani	MING-ME CHUNG-RI*	WP		3050	1994

<i>Geranium pratense</i> L.	Gerani	LI-KHA-TUR, LHEE-GAH-DHOOR**	WP	63	4573	1995
<i>Hypericum</i>	Hyperi	TAK-NGU	WP	64	4637	1995
<i>Iris decora</i> Wall. ?	Iridac	DHE-MA, DRHAY-MA**	WP	65	4593	1995
<i>Dracocephalum heterophyllum</i> Benth.	Labiata	NGEN-THULBA	Fl-S	146	4567	1995
<i>Dracocephalum heterophyllum</i> Benth.	Labiata	NYEN-DUL-PA*, NYEN-THUL-WA*	Fl-S		3052	1994
<i>Elsholtzia</i> ?	Labiata	JHA-RAB	WP	66	3078	1994
<i>Eriophyton wallichii</i> Benth.	Labiata	GAN-SUR MENDOK	WP	67	4606	1995
<i>Eriophyton wallichii</i> Benth.	Labiata	GANG-SKUR*	WP		2292	1993
<i>Eriophyton wallichii</i> Benth.	Labiata	GANG-KOOR-MO, PANG-TSEN PHOO-RHOO**	WP		3066	1994
<i>Lamium</i> ?	Labiata	CHAM-KU	WP	68	4639	1995
<i>Nepeta hindostana</i> Haines	Labiata	JHA-WO-CHE*	WP	69	3064	1994
<i>Nepeta hindostana</i> Haines	Labiata	JA-PO-TSE-TSE*	WP		3904	1994
<i>Nepeta hindostana</i> Haines	Labiata	CHA-BU-CHE	WP		4525	1995
<i>Prunella vulgaris</i> L.	Labiata	NA-RAM, NA-RAK NA-RAM*	WP	71	3067	1994
<i>Rabdosia pharica</i> Hara	Labiata	KHENAK	WP	70	4535	1995
<i>Salvia</i>	Labiata	JHIP-CHA-MO	WP	72	3053	1994
<i>Salvia</i>	Labiata	MA-MA ZIP-CHI	Fl-Stm	150	4547	1995
<i>Salvia</i>	Labiata	MA-MA NAGMU	WP		4572	1995
<i>Astragalus</i> ?	Legumi	SE-MA KAR-PU	Rt	166	4604	1995
<i>Medicago falcata</i> L. ?	Legumi	BU-SU-HANG	WP	73	3090	1994
<i>Medicago falcata</i> L. ?	Legumi	BU-SHU-HANG SHEMA*	WP		4634	1995
<i>Oxytropis mollis</i> Royle ex Benth.	Legumi	NGO-TAK-SHA	WP	74	4560	1995
<i>Oxytropis mollis</i> Royle ex Benth.	Legumi	NYO-TAK-SHA*, NGO-TAK SHA-SHOP*	WP		3077	1994
<i>Oxytropis williamsii</i> Vassilicz.	Legumi	RAG-DIK-PA	WP	75	4611	1995
<i>Oxytropis williamsii</i> Vassilicz.	Legumi	RA-DUG-PA*, RAK-SHUK*	WP		3058	1994
<i>Sophora moorcroftiana</i> Benth. var. <i>nepalensis</i>	Legumi	KIMDO	Fr	153	4601	1995
<i>Allium</i>	Liliac	RI-KOK, RE-KYOEN*	WP	76	3043	1994
<i>Asparagus fillicinus</i> Buch.-Ham. ex D. Don	Liliac	NGIR-SING	WP	77	4521	1995
<i>Asparagus racemosus</i> Willd.	Liliac	NYE-SHING, NYER-SHING*, NYAY-SHING**	Rt		3116	1994
<i>Asparagus racemosus</i> Willd.	Liliac	NGER-SHING*	Rt	167	4602	1995
<i>Paris polyphylla</i> Smith	Liliac	WHOL-MU SE	Fr	151	4561	1995
<i>Polygonatum cirrhifolium</i> Royle ?	Liliac	RA-MNGE	Rh	155	4660	1995
<i>Polygonatum cirrhifolium</i> Royle ?	Liliac	RA-NYER*, RA-NYOR*, RAH-NYAY**	Rh		3124	1994
<i>Lanopila</i>	mashr.	SHA-MU-DUM	FB	179	4531	1995
<i>Lanopila</i>	mashr.	SING-SHA	FB	180	4678	1995
<i>Epilobium</i>	Onagra	NGO-THUN-NGUNG	WP	78	4569	1995
<i>Epilobium</i>	Onagra	JHR-PHEN CHU-TZEY**	WP		3098	1994
<i>Epilobium</i>	Onagra	NGO-DUKN-GONG*, NYOEN-DUNG-NUNG*	WP		3098	1994
<i>Ophioglossum</i>	Ophiog	KANG-JIK	WP	175	4625	1995
<i>Epipactis</i>	Orchid	A-KHA NGOEN-PO, A-JAK-TSER-NYOEN*	WP	79	3073	1994
<i>Epipactis</i>	Orchid	WONG-RIL SHENBA*	WP		4592	1995
<i>Orchis latifolia</i> L. var. <i>incarnata</i>	Orchid	WONG-LA, WANG-LUCK**	Rt	168	4620	1995
<i>Dicentra macrocapnos</i> ?	Papave	PA-SHYA-KHA	WP	80	4548	1995
<i>Dicentra macrocapnos</i> ?	Papave	BA-SHA-KA	WP		3049	1994
<i>Dicranostigma lactucoides</i> Hook. f. & Thoms.	Papave	CHA-THIK	WP	81	4600	1995
<i>Dicranostigma lactucoides</i> Hook. f. & Thoms.	Papave	TRI-CHAR*	WP		3046	1994
<i>Dicranostigma lactucoides</i> Hook. f. & Thoms. ?	Papave	TRI-CHAR*, TRAH-ZANG ?**	WP		3909	1994
<i>Meconopsis horridula</i> Hook. f. & Thoms.	Papave	A-CHAK CHEN-GUN	WP	82	4598	1995
<i>Meconopsis horridula</i> Hook. f. & Thoms.	Papave	CHAR-NGO*, TSAYR-NGON**	WP		3114	1994
<i>Pinus wallichiana</i> A.B. Jackson	Pinace	THANG-SHING LO-MA	Lf	133	3113	1994
<i>Plantago major</i> L. ?	Planta	THA-RAM	WP	83	4585	1995
<i>Plantago major</i> L. ?	Planta	THA-RAM, THEL-RAM*	Fl-S		3112	1994
<i>Aconogonum alpinus</i> Schur ?	Polygo	RONG-NGULU	WP	84	4638	1995
<i>Bistorta affinis</i> Greene	Polygo	CHA-HUNG-LEN, ZA-HUNG-LEN*	WP	87	3923	1994
<i>Bistorta affinis</i> Greene	Polygo	HONG-LEN*	WP		3051	1994

ネパール王国のムクチナート伝統医学病院で蒐集されたチベット薬物

<i>Bistorta amplexicaulis</i> Greene	Polygo	LI-GA-TOR	Rh	156	3922	1994
<i>Bistorta macrophylla</i> Sojak	Polygo	PANG-RAM	WP	85	3919	1994
<i>Bistorta vivipara</i> S.F. Gray	Polygo	LI-GA-DUR*	Rh		3900	1994
<i>Bistorta vivipara</i> S.F. Gray var. <i>jaljalensis</i>	Polygo	PANG-RAM LHO-WA	WP	86	3920	1994
<i>Bistorta vivipara</i> S.F. Gray var. <i>jaljalensis</i>	Polygo	PANG-RAM-PHO	Rh	157	3921	1994
<i>Bistorta vivipara</i> S.F. Gray var. <i>jaljalensis</i>	Polygo	LI-GA-ZHUR*	Rh		2296	1993
<i>Bistorta vivipara</i> S.F. Gray var. <i>jaljalensis</i>	Polygo	LI-GA-DUR*	Rh		3096	1994
<i>Bistorta affinis</i> Greene	Polygo	SHU-LAB*	WP		3051	1994
<i>Oxyria digyna</i> Hill	Polygo	NGA-LO GHE-PO, NGE-LO GHE-PO*	WP	88	4563	1995
<i>Persicaria nepalensis</i> H. Gross ?	Polygo	NGA-LO	WP	89	4556	1995
<i>Polygonum aviculare</i> ?	Polygo	SHUR-CHI-NAK	WP	90	4554	1995
<i>Polygonum</i> ?	Polygo	NYA-LO, NE-LLO*, NYAH-LOH**	WP	91	3105	1994
<i>Rheum australe</i> D. Don	Polygo	CHOM-ZA	Rt	169	4659	1995
<i>Rheum australe</i> D. Don	Polygo	CHUM-TSA*, CHOM-CHA NAKPO*	Rt		3122	1994
Androsace	Primul	NGO-GA-TIK*, NYON-GA-TIGK	WP	92	3062	1994
<i>Primula</i>	Primul	SHANG-THIL KAR-PU	WP	93	3140	1994
<i>Primula</i> ?	Primul ?	SANG-CHI KAR-PO*, ZANG-TSE-KAR-PO*	WP		3986	1994
<i>Primula</i> ?	Primul ?	SHANG-DREEL KAR-PO ?**	WP		3986	1994
<i>Punica granatum</i> L.	Punica	SEN-DU SHEMBA	Fr	152	4618	1995
<i>Aconitum</i>	Ranunc	PHON-GHAR*	WP	94	4536	1995
<i>Aconitum</i>	Ranunc	BONG-KAR, BHONG-KAR**	WP		3901	1994
<i>Aconitum</i>	Ranunc	BONG-KAR	WP		3110	1994
<i>Anemone rivularis</i> Buch.-Ham. ex DC.	Ranunc	SUP-KHA, SOUP-KAH**	WP	95	4551	1995
<i>Anemone rivularis</i> Buch.-Ham. ex DC.	Ranunc	SUP-DE	Sd	154	4624	1995
<i>Anemone rivularis</i> Buch.-Ham. ex DC.	Ranunc	SIP-KHA, DRA-GA*	WP		3061	1994
<i>Anemone rivularis</i> Buch.-Ham. ex DC.	Ranunc	SUP-KHA	WP		4650	1995
<i>Clematis tibetana</i> Kuntze	Ranunc	I-MUNG-KARPO, E-MONG NHUCK-POH**	WP	96	4644	1995
<i>Clematis tibetana</i> Kuntze	Ranunc	E-MONG KAR-POH**, JI-MONG*	Stm		3091	1994
<i>Delphinium</i>	Ranunc	JA-KANG-METHO, JHA-KEY NYOEN*	WP	97	3072	1994
<i>Delphinium</i>	Ranunc	LHOMA-MENDOK*	WP		4586	1995
<i>Delphinium brunonianum</i> Royle	Ranunc	CHAR-KOE-PE	WP	98	4527	1995
<i>Delphinium brunonianum</i> Royle	Ranunc	BYS-RGOD-SPO*	WP		2293	1993
<i>Ranunculus</i>	Ranunc	CHE-CHA-PHO	WP	100	4646	1995
<i>Ranunculus</i>	Ranunc	CHE-CHA*, CHAY-TSAH**	WP		4559	1995
<i>Ranunculus acris</i> ?	Ranunc	KE-CE METHO, CHA-CHENYOK*	WP	99	3039	1994
<i>Thalictrum</i>	Ranunc	NGO-TONGU-RI	WP	101	4541	1995
<i>Thalictrum</i>	Ranunc	CHA-KYU-PHO	WP	102	4557	1995
<i>Thalictrum</i>	Ranunc	NYOEN-TRIN, NGO-TIN CHUNGWA*	WP	103	3102	1994
<i>Thalictrum</i>	Ranunc	NYOEN-TRIN, NGO-TIN DONG*	WP		3065	1994
<i>Thalictrum platycarpum</i> Hook. f. et Thoms. ?	Ranunc	DAMEN-CHA-KYU	WP	104	4550	1995
<i>Potentilla</i>	Rosace	WUK-CHUK-SHEMBA	WP	105	4614	1995
<i>Potentilla</i> ?	Rosace	THOL-TA SA-DIN	WP	106	4617	1995
<i>Rosa macrophylla</i> Lindl.	Rosace	SO-YI-RTOG	FI-P	143	2297	1993
<i>Rosa sericea</i> Lindl.	Rosace	SI-PI-MENDOK	FI-P	144	4623	1995
<i>Rosa sericea</i> Lindl. ?	Rosace	SAE-WE-METHO*	FI-P		3037	1994
<i>Galium</i>	Rubiace	SANG-JE KA-RU SHEMBA	WP	107	4537	1995
<i>Rubia manjith</i> Roxb. ex Fleming	Rubiace	SANG-JI KAR-PU, TZOH**	WP	108	4581	1995
<i>Rubia manjith</i> Roxb. ex Fleming	Rubiace	SANG-CHI KARPO*, ZANG-TSE-KAR-PO*	WP		3121	1994
<i>Androsace sarmentosa</i> ?	Saxifr	GHA-TIK, TA-TIGK*, GAH-THEEK**	WP	159	3109	1994
<i>Crysosplenium</i> ?	Saxifr ?	YA-KHIL-MA, YAH-KYEE-MAH**	WP	111	4631	1995
<i>Lagotis cashmeriana</i> Rupr. ?	Scroph	THAK PHA-SHYA-KHA, HONG-LHEN**	WP	110	4568	1995
<i>Lagotis cashmeriana</i> Rupr. ?	Scroph	BHA-SHA-KA*	WP		3103	1994
<i>Lagotis cashmeriana</i> Rupr. ?	Scroph	BHA-SHA-KA*	WP		3908	1994
<i>Lancea tibetica</i> Hook. f. & Thoms.	Scroph	PA-YAK, PANG-YAK*, PAH-YAK TZA-WAH**	WP	109	3048	1994
<i>Lancea tibetica</i> Hook. f. & Thoms.	Scroph	PA-YAK*, PANG-YAK*	WP		3905	1994

<i>Lancea tibetica</i> Hook. f. & Thoms.	Scroph	PA-YA*	WP		4522	1995
<i>Pedicularis</i>	Scroph	LHA-LANG	WP	113	4663	1995
<i>Pedicularis</i>	Scroph	SEN-SER MENDHOK	Fl	142	4605	1995
<i>Pedicularis</i>	Scroph	LOK-RUL, LOOK-RU-MO*	WP		3111	1994
<i>Pedicularis gracilis</i> Wall. ex Benth.	Scroph	LANG-NA SHEBA	WP	112	4566	1995
<i>Pedicularis gracilis</i> Wall. ex Benth.	Scroph	ZANG-TIGK*	WP		3056	1994
<i>Pedicularis gracilis</i> Wall. ex Benth.	Scroph	LANG-NA-MAR*	WP		4534	1995
<i>Pedicularis gracilis</i> Wall. ex Benth.	Scroph	LANG-MAR CHUNGA*	WP		4578	1995
<i>Pedicularis longiflora</i> Rudolph	Scroph	LUK-RU SER-PO, LOOK-GYU SERPO*	WP	114	3089	1994
<i>Pedicularis longiflora</i> Rudolph var. <i>tubiformis</i>	Scroph	LUK-RU SER-PU, LHOOK-RHOO SAYR-POH**	Fl	141	4612	1995
<i>Pedicularis pennelliana</i> Tsoong	Scroph	LANG-NA SHEMBA	WP	115	4574	1995
<i>Picrorhiza scrophulariiflora</i> Pennell	Scroph	HUNG-LEN, HONG-LHEN**	Rh	158	4562	1995
<i>Picrorhiza scrophulariiflora</i> Pennell	Scroph	HONG-LEN*, SHU-LAB*	Rh		3910	1994
<i>Picrorhiza scrophulariiflora</i> Pennell	Scroph	SHU-LAB*, HONG-LEN*	Rh		4680	1994
<i>Verbascum thapsus</i> L.	Scroph	SER-JAY, SER-GYED*	Lf	117	3070	1994
<i>Verbascum thapsus</i> L.	Scroph	YU-KU SHINGAM SERCHI	Fl-S	147	4549	1995
<i>Myricaria</i>	Tamari	AM-BU MENDO, WOMB-BHOO**	Fl	140	4674	1995
<i>Myricaria</i>	Tamari	HA-BHU-NGOK*	Fl-S		3107	1994
<i>Myricaria rosea</i> W.W. Smith ?	Tamari	AM-BU SING	Stm	131	4677	1995
<i>Myricaria rosea</i> W.W. Smith ?	Tamari	AOM-BU-SHING*, WOMB-BHOO**	Stm		3084	1994
<i>Bupleurum gracillimum</i> Klotzsch	Umbell	TU-NAK CHUNGA	WP	118	3219	1994
<i>Coriandrum sativum</i> L.	Umbell	WU-SU	WP	119	4652	1995
<i>Coriandrum sativum</i> L.	Umbell	WU-SU, AU-SU*	WP		3101	1994
<i>Cortia depressa</i> C. Norman	Umbell	BHO-DO-WA	WP	120	4584	1995
<i>Heracleum lalii</i> Norman ?	Umbell	TU-NAK, TRHOO-NHUCK**	WP	123	4580	1995
<i>Hydrocotyle</i> ?	Umbell	CHU-RU-PA	WP	124	4673	1995
<i>Pleurospermum</i> ?	Umbell	TAN-GYUN	Fl	145	4544	1995
<i>Nardostachys grandiflora</i> DC.	Valeri	PANG-POE	Rh	161	4658	1995
<i>Nardostachys grandiflora</i> DC.	Valeri	PANG-POE	Rh		3081	1994
<i>Viola</i>	Violac	PA-YA-SHING	WP	125	4532	1995
<i>Viola</i>	Violac	THU-KI-NGING PA-YA-SHING*	WP	125	4532	1995
fern	fern	RI-RAL	WP	172	4615	1995

《Abbreviations in the Table》

P.No: Photograph Number

KAMP No.: Specimen number stored in the Faculty of Pharmaceutical Sciences, Kanazawa University

PART

Fl: flower	Rh: rhizome
Fl-P: flower petal	Rt: root
Fl-S: flower spike	Sd: seed
Fl-Stm: flowering stem	Stm: stem
Fr: fruit	Tb: tuber
Lf: leaf	WP: whole plant

Amaran	: Amaranthaceae	Labiata	: Labiatae
Aracea	: Araceae	Legumi	: Leguminosae
Berber	: Berberidaceae	Liliac	: Liliaceae
Boragi	: Boraginaceae	Onagra	: Onagraceae
Campan	: Campanulaceae	Ophiog	: Ophioglossaceae
Caryop	: Caryophyllaceae	Orchid	: Orchidaceae
Chenop	: Chenopodiaceae	Papave	: Papaveraceae
Compos	: Compositae	Planta	: Plantaginaceae
Convol	: Convolvulaceae	Pinace	: Pinaceae
Crassu	: Crassuraceae	Polygo	: Polygonaceae
Crucif	: Cruciferae	Primul	: Primulaceae
Cupres	: Cupressaceae	Punica	: Punicaceae
Dipsac	: Dipsacaceae	Ranunc	: Ranunculaceae
Ephedr	: Ephedraceae	Rosace	: Rosaceae
Equise	: Equisetaceae	Rubiac	: Rubiaceae
Ericac	: Ericaceae	Saxifr	: Saxifragaceae
Gentia	: Gentianaceae	Scroph	: Scrophulariaceae
Gerani	: Geraniaceae	Tamari	: Tamaricaceae
Hyper	: Hypericaceae	Umbell	: Umbelliferae
Iridac	: Iridaceae	Valeri	: Valerianaceae
		Violac	: Violaceae

* : a second name

** : a name written in Tsarong's "Tibetan Medicinal Plants"

