

2.Field Surveys in China

| | |
|-------|---|
| メタデータ | 言語: eng 出版者: 公開日: 2017-10-05 キーワード (Ja): キーワード (En): 作成者: メールアドレス: 所属: |
| URL | http://hdl.handle.net/2297/6313 |

2. Field Surveys in China

September 24 – October 2, 2002

◆ Member

Masayuki MIKAGE, Naoto KAMATA, Satoshi TSUYUKI, Mamoru KUBO

◆ Route

Beijing – Zhangjiakou – Hohhot – Baotou – Dongsheng – Shizuishan – Yinchuan

September 15 – September 23, 2004

◆ Member

Masayuki MIKAGE, Naoto KAMATA, Mamoru KUBO, Ryotaro KOMURA

◆ Route

Dalian – Fengcheng – Tonghua – Shenyang – Beijing – Jinan – Yantai - Qingdao

August 17 – August 24, 2002

◆ Member

Naoto KAMATA, Mamoru KUBO, Ryotaro KOMURA

◆ Route

Yanji – Changbaek – Jilin – Shenyang – Xiuyan - Dalian





Area of planting trees



Farmland



Farmland



Pasturage



Desertification



Ephedra distachya



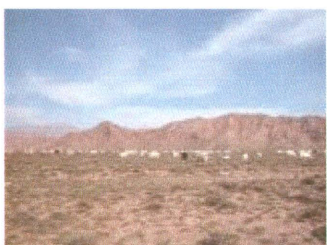
Farmland



Desertification



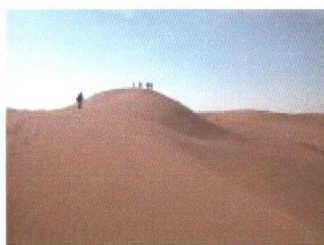
Protected area of plants



Pasturage



Ephedra distachya



Gobi desert

Research of *Ephedra distachya* and desertification in 2002.



Dalian



Fengchen



Fengcheng



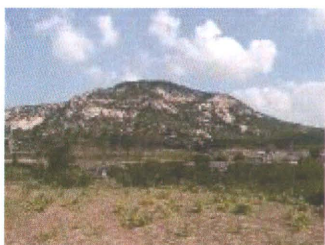
Tonghua



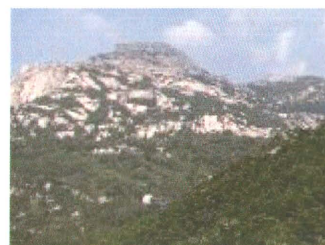
Shenyang



Jinan



Yantai



Qingdao

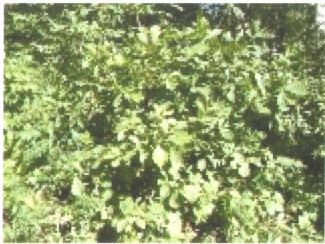
Research of *Quercus mongolica* in 2004.



Changbaek



Changbaek



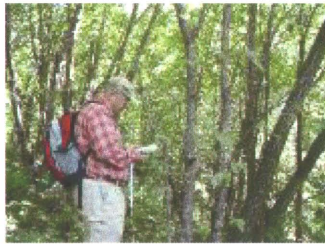
Changbaek



Changbaek



Jilin



Jilin



Shenyang



Xiuyan

Research of *Quercus mongolica* in 2004.