

## Service Information

### (1) Exhibition

Ordinarily, the permanent exhibition, four planned or special exhibitions, and an exhibition planned by student studying for a curator's qualification are held in the exhibition room.

In addition, two outreach exhibitions planned for the alumni association, for citizens and tourists in Kanazawa, are great opportunities to make people aware of our activity.



### (2) Inspection and Reference Service

Archives are made available for inspection and for a reference service to students, teachers, and those outside academia.



### (3) Public Relations

The museum issues newsletters three times a year. We use the museum's website and the Virtual Museum Project to present our collection worldwide.



### (4) Supporting Research Activities

The museum issues a bulletin once a year to publicize its research activities. The bulletin is put up on "KURA" (Kanazawa University Repository for Academic Resources), in the Kanazawa University Library website.

We also have exhibits on the latest in research currently carried out at Kanazawa University.

### (5) Contribution to the Local Community and Regional Cooperation

The museum lends items in its collection to other universities or museums. We occasionally organize joint exhibitions with other cultural institutions or special lectures.

### Kanazawa University Museum

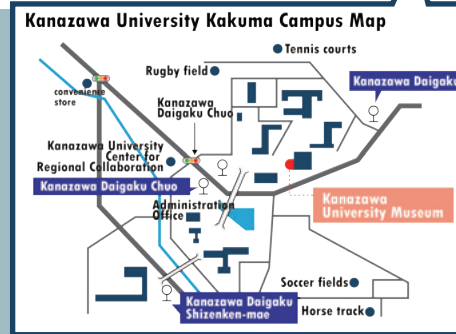
Founding year : 1989

Total floor area : 833㎡ (Exhibition Room 301㎡

Basement Storage Room 180㎡ First-floor Storage Room 186㎡

Exhibition Preparation Room/Warehouse 166㎡)

## Access to the Museum



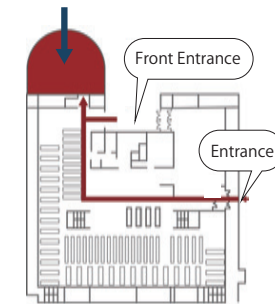
### Access

Hokutetsu Bus No. 91/93/94/96/97/98/99

Five minutes walk from Kanazawa Daigaku Chuo bus stop.

Takes about forty minutes from JR Kanazawa Station Kenroku-en Exit.

Kanazawa University Museum  
Exhibition Room



Central Library & Museum Bldg.

## Admission Free

### Opening hours

Weekdays 10:00-16:00

Closed on Saturdays, Sundays, national holidays, and the library's closed days.

There will be exceptions to this schedule because of events at the University.

\* Exhibition Room is at the second floor reading room of Central Library.

\* Please ask the library counter staff, if you need to contact us.



Kanazawa University Museum

Kakuma-machi, Kanazawa-shi, Ishikawa, 920-1192, Japan

Phone: +81-076-264-5215

URL: <https://museum.kanazawa-u.ac.jp>



KANAZAWA  
UNIVERSITY  
MUSEUM

金沢大学資料館



## Introduction

Kanazawa University traces its origins back to Hikoso Shuto-jo, the Kaga Hikoso Vaccination Center, founded in 1862, more than 150 years ago. This makes Kanazawa University the third-oldest of those national universities with an official year of founding.

Kanazawa University Museum was established in 1989 when Kanazawa University was relocated from the Kanazawa Castle site to the present Kakuma Campus. Our mission is to collect, organize, preserve, research, and exhibit items. The museum stores around 88,000 materials, specimens and archives that serve as academic resources for not only Kanazawa University but also its predecessors such as the Fourth Higher School. Our purpose is to contribute to the education, research, social services, and promotion activities of Kanazawa University. With the museum designated as a Museum-Equivalent Establishment by MEXT in 2016, our mission is growing increasingly significant.

## Our Activity

Kanazawa University Museum collects, organizes, preserves, researches, and exhibits items; we provide information about our materials and archives; we also respond to inquiries regarding our collection and requests for references. The museum plays an important role for the university archives. We select valuable archives on the history of the university from a wealth of official documents. Kanazawa University Museum's Virtual Museum Project, which started in 2009, is a significant attempt to create a new style of digital archive. (<http://kuvm.kanazawa-u.ac.jp/>)

## Our Collection

The museum stores over 77,000 items, including paleography and 11,000 historical documents. Our collection includes valuable items such as physical laboratory apparatus formerly used in the Fourth Higher School, plaques from the Kaga domain schools (Meirindo and Keibukan), and archives from predecessors of Kanazawa University.

The collections are carefully stored in repositories, and some of them are occasionally exhibited in the exhibition room. The list of items on public display is available on our website. In addition to this, the Virtual Museum Project on the web provides high-resolution images with detailed academic data.

## Cultural History Materials



Plaque of Meirindo



Plaque of Keibukan

Plaques from the Kaga domain schools (1792)  
\* Designated cultural property by Kanazawa city



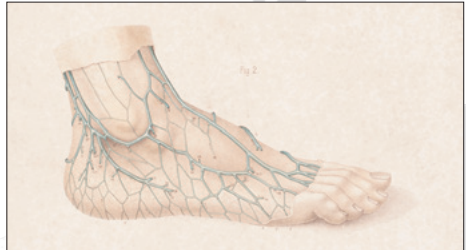
Classical psychology experimental apparatus

## Archives Related to the University History



Student's Album from Kanazawa Higher Technical College

## Natural History Materials



Human anatomy drawings from the Faculty of Medicine



Moulage Model of Fungi



Terracotta Model of evolutionary history of life

## History of Science and Technology Materials



Bridge model from Kanazawa Higher Technical College



Physical experimental apparatus from the Fourth Higher School