

# A case report of anaplastic carcinoma of the pancreas with remarkable intraductal tumor growth into the main pancreatic duct

メタデータ	言語: eng 出版者: 公開日: 2021-08-30 キーワード (Ja): キーワード (En): 作成者: メールアドレス: 所属:
URL	<a href="https://doi.org/10.24517/00061730">https://doi.org/10.24517/00061730</a>

This work is licensed under a Creative Commons Attribution-NonCommercial-ShareAlike 3.0 International License.



## A case report of anaplastic carcinoma of the pancreas with remarkable intraductal tumor growth into the main pancreatic duct

Mitsuyoshi Okazaki, Isamu Makino, Hirohisa Kitagawa, Shinichi Nakanuma, Hironori Hayashi, Hisatoshi Nakagawara, Tomoharu Miyashita, Hidehiro Tajima, Hiroyuki Takamura, Tetsuo Ohta

Mitsuyoshi Okazaki, Isamu Makino, Hirohisa Kitagawa, Shinichi Nakanuma, Hironori Hayashi, Hisatoshi Nakagawara, Tomoharu Miyashita, Hidehiro Tajima, Hiroyuki Takamura, Tetsuo Ohta, Department of Gastroenterologic Surgery, Graduate School of Medical Science, Kanazawa University, Kanazawa 920-8641, Japan

**Author contributions:** Okazaki M and Makino I contributed equally to this work; Okazaki M, Makino I, Kitagawa H, Nakagawara H, Miyashita T, Tajima H, Takamura H and Ohta T performed surgery; Okazaki M and Makino I, Nakanuma S and Hayashi H managed postoperative treatment; Okazaki M and Makino I wrote the paper.

**Correspondence to:** Mitsuyoshi Okazaki, MD, Department of Gastroenterologic Surgery, Graduate School of Medical Science, Kanazawa University, 13-1 Takara-machi, Kanazawa 920-8641, Japan. [mitsuyoshi0610@yahoo.co.jp](mailto:mitsuyoshi0610@yahoo.co.jp)

Telephone: +81-76-2652362 Fax: +81-76-2344260

Received: August 16, 2013 Revised: October 10, 2013

Accepted: November 1, 2013

Published online: January 21, 2014

### Abstract

We herein report a case of anaplastic carcinoma of the pancreas with remarkable intraductal tumor growth into the main pancreatic duct. A 76-year-old male was referred to our hospital for treatment of a pancreatic tumor. Preoperative examinations revealed a poorly defined tumor in the main pancreatic duct in the body of the pancreas, accompanied with severe dilatation of the main pancreatic duct, which was diagnosed as an intraductal papillary-mucinous neoplasm. We performed distal pancreatectomy and splenectomy. The pathological examination revealed that the tumor consisted of a mixture of anaplastic carcinoma (giant cell type) and adenocarcinoma in the pancreas. There was a papillary projecting tumor composed of anaplastic carcinoma in the dilated main pancreatic duct. The patient is now receiving chemother-

apy because liver metastasis was detected 12 mo after surgery. In this case, we could observe a remarkable intraductal tumor growth into the main pancreatic duct. We also discuss the pathogenesis and characteristics of this rare tumor with specific tumor growth.

© 2014 Baishideng Publishing Group Co., Limited. All rights reserved.

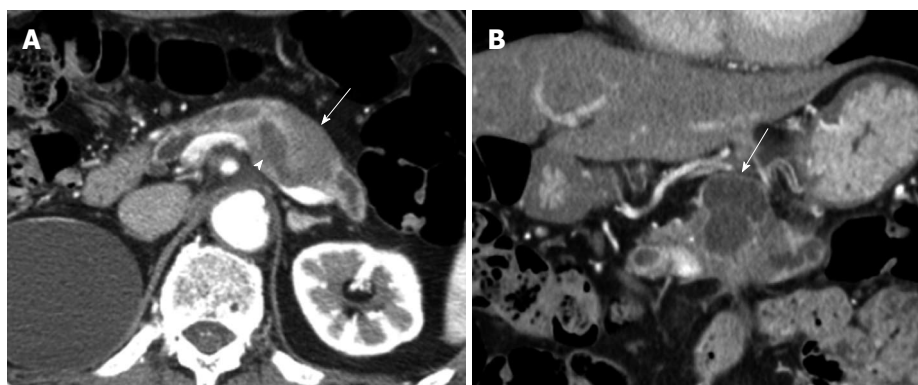
**Key words:** Anaplastic carcinoma; Giant cell carcinoma; Intraductal tumor growth; Papillary projecting tumor

**Core tip:** A very rare case of anaplastic carcinoma with remarkable intraductal tumor growth into the main pancreatic duct is reported. This case presented unique features and might help us to better understand the pathogenesis of this rare entity.

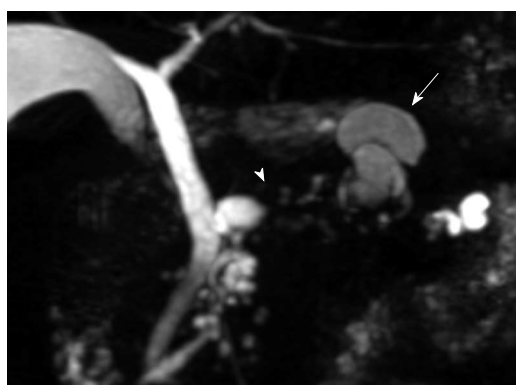
Okazaki M, Makino I, Kitagawa H, Nakanuma S, Hayashi H, Nakagawara H, Miyashita T, Tajima H, Takamura H, Ohta T. A case report of anaplastic carcinoma of the pancreas with remarkable intraductal tumor growth into the main pancreatic duct. *World J Gastroenterol* 2014; 20(3): 852-856 Available from: URL: <http://www.wjgnet.com/1007-9327/full/v20/i3/852.htm> DOI: <http://dx.doi.org/10.3748/wjg.v20.i3.852>

### INTRODUCTION

Anaplastic carcinoma of the pancreas is an aggressive tumor. The incidence of anaplastic carcinoma varies from 2.1% to 6.8% among reported case series<sup>[1-5]</sup>. It was first reported by Sommers and Meissner as pleomorphic carcinoma<sup>[6]</sup>. Pathologically, it is classified into spindle cell, giant cell and pleomorphic types. When detected, patients usually have huge tumors showing rapid growth,



**Figure 1** Abdominal computed tomography. A: An axial section image of an abdominal computed tomography showed dilatation of the main pancreatic duct (arrow) and the adjacent solid tumor (arrowhead); B: The coronal section image revealed a cystic lesion measuring 6.0 cm × 3.5 cm in the body and tail of the pancreas (arrow).



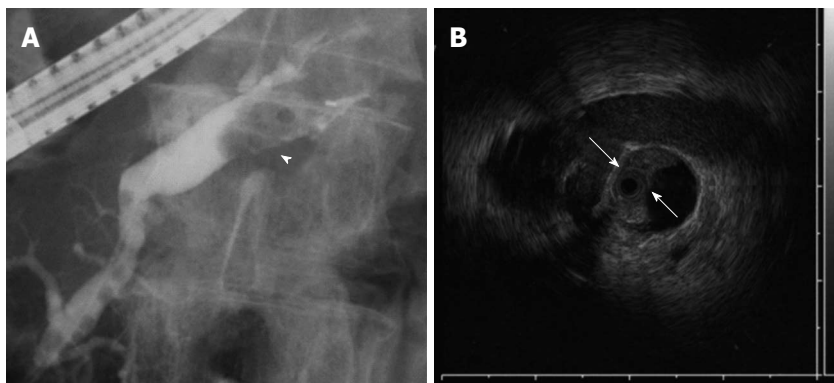
**Figure 2** Magnetic resonance cholangiopancreatography revealed a segmental defect of the main pancreatic duct by the solid tumor (arrow head) associated with the multilocular cystic lesion (arrow) in the body and tail of the pancreas.

which are associated with a very poor prognosis. It usually presents as a large cystic pancreatic tumor with areas of hemorrhage and necrosis. En-bloc surgical resection is the only appropriate treatment for the tumors<sup>[5,7]</sup>. We herein report the clinicopathological features of a case of anaplastic carcinoma of the pancreas with remarkable intraductal tumor growth into the main pancreatic duct.

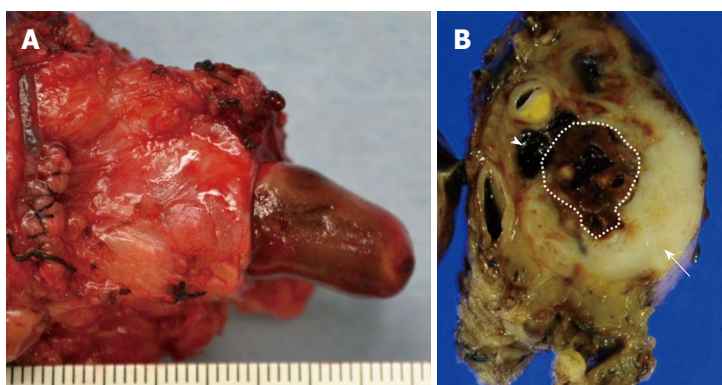
## CASE REPORT

A 76-year-old male was admitted to our hospital for further investigation of a pancreatic tumor. He had received treatment for type 2 diabetes mellitus, essential hypertension and severe arteriosclerosis obliterans. He received ultrasonography as a screening examination, which showed a cystic tumor in the body and tail of the pancreas. He had no significant symptoms. The laboratory findings revealed that the serum carbohydrate antigen (CA19-9) was elevated to 57 U/mL, but the other tumor markers, carcinoembryonic antigen and DUPAN-II, were all within the normal ranges. Abdominal CT revealed a tumor measuring 6.0 cm × 3.5 cm in the body and tail of the pancreas. It consisted of a multilocular cystic component and a solid tumor in the lumen of the dilated main pancreatic duct (MPD) (Figure 1). No distant metastasis or lymph

node swelling were detected. Endoscopic ultrasonography showed a heterogeneous hypoechoic tumor with a cystic component. On abdominal magnetic resonance imaging, the solid tumor presented with low intensity on T1-weighted images and relatively high intensity on T2-weighted images. MR cholangiopancreatography showed a segmental defect of the MPD by the solid tumor associated with the multilocular cystic lesion in the body and tail of the pancreas (Figure 2). Endoscopic retrograde cholangiopancreatography showed significant dilatation of the MPD from the body to the tail of the pancreas, and an elliptic filling defect in the MPD, suggesting the presence of an intraductal tumor in the lumen of the MPD (Figure 3A). Intraductal ultrasonography demonstrated a solid tumor filling the main pancreatic duct and a cystic lesion in the body of the pancreas (Figure 3B). The diagnosis of the exfoliative cytology was adenocarcinoma. We therefore diagnosed the tumor as an intraductal papillary mucinous neoplasm (IPMN) of the pancreas with obvious dilatation of the MPD. At laparotomy, the tumor had invaded into the transverse mesocolon, but dissemination and distant metastasis were not found. We performed distal pancreatectomy with splenectomy. We decided to make the transecting line of the pancreas by conforming it to the tumor extension using intra-operative ultrasonography. When we transected the pancreas, a reddish tumor protruded from the lumen of the MPD in the resected pancreas (Figure 4A). The main tumor, which replaced the body and tail of the pancreas, was dark reddish-brown and white on the surface, and had infiltrated into the adjacent MPD (Figure 4B). There was a papillary tumor associated with the main tumor in the lumen of the MPD. The MPD was significantly dilated by this protruded tumor. Hematoxylin and eosin staining showed that the part of the tumor presenting a white surface consisted of an adenocarcinoma (tub1, tub2) component, and the part of the tumor presenting the dark reddish-brown surface consisted of anaplastic carcinoma (giant cell type). The projecting tumor in the MPD was composed of anaplastic carcinoma (Figure 5). There was moderate dysplasia with no malignancy (pancreatic intraepithelial neoplasm-2) in the epithelium of dilated main pancreatic duct. The pathological diagnosis



**Figure 3** Endoscopic retrograde cholangiopancreatography showed the dilatation of the main pancreatic duct. A: A filling defect in the main pancreatic duct (MPD) (arrow head); B: Intraductal ultrasonography demonstrated a filling lesion in the MPD (arrow).



**Figure 4** Pathological findings. A: The dilated main pancreatic duct was filled with a papillary projecting tumor; B: The main tumor was dark reddish-brown (arrow head) and white (arrow) on the surface, and showed significant dilatation of the main pancreatic duct (dotted line region).

was a mixture of anaplastic carcinoma (giant cell type) and adenocarcinoma of the pancreas. The postoperative course was uneventful. The patient is now receiving chemotherapy because liver metastasis was detected 12 mo after surgery.

## DISCUSSION

Anaplastic carcinoma of the pancreas is a rare and aggressive tumor. Several terms have been used for this tumor, including pleomorphic carcinoma, pleomorphic giant cell carcinoma, pleomorphic large cell carcinoma, sarcomatoid carcinoma and undifferentiated carcinoma<sup>[2,3,8]</sup>. Three histological variants of anaplastic carcinoma, namely the spindle cell type, pleomorphic cell type and giant cell type, have been described<sup>[9]</sup>. According to the guideline of the World Health Organization (WHO) in 2010<sup>[10]</sup>, these carcinomas were classified as undifferentiated (anaplastic) carcinomas. On the other hand, anaplastic carcinoma with osteoclast-like giant cells is classified as a subtype of invasive ductal carcinoma.

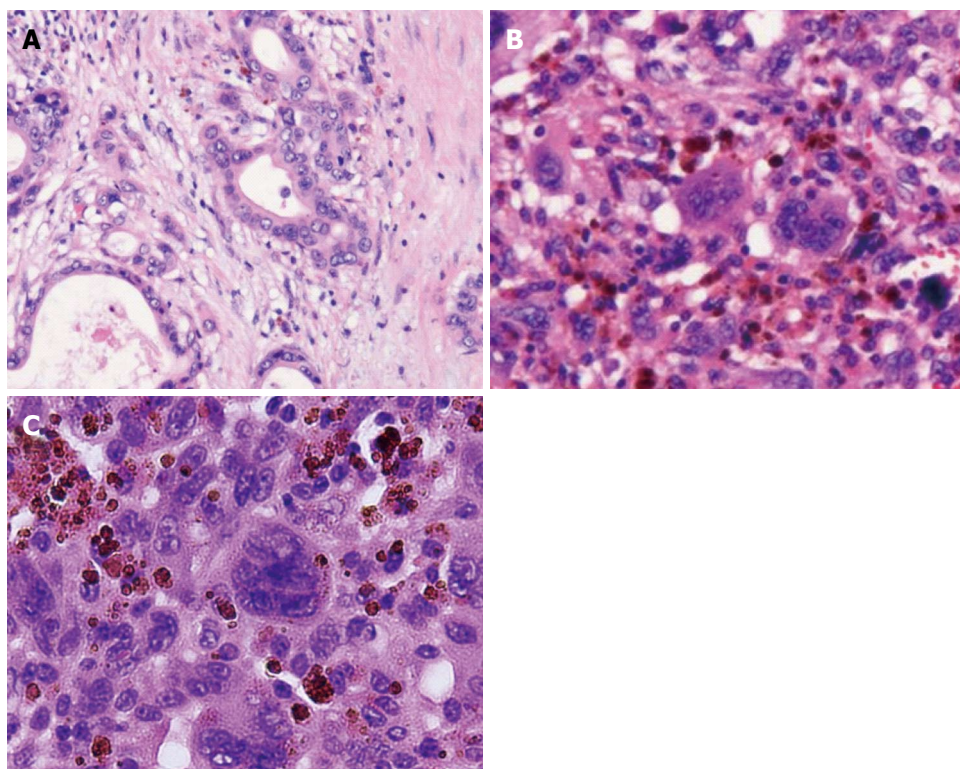
The clinical features of anaplastic carcinoma have been reported in the literature. The clinical symptoms induced by this tumor are non-specific, such as abdominal pain, fatigue, jaundice, body weight loss, anorexia and back pain<sup>[3]</sup>, which resemble those induced by adenocarcinoma

of the pancreas. In the imaging study, anaplastic carcinomas are usually detected as large, moderately hypervascular and exophytic tumors with large areas of necrosis<sup>[2]</sup>.

The preoperative diagnosis of anaplastic carcinoma of the pancreas is difficult. The preoperative diagnosis for the tumor in our case was IPMN, because it appeared to be a multilocular cystic lesion with obvious dilatation of the MPD. The tumor of our case showed a very characteristic appearance because it consisted of a mixture of components of adenocarcinoma and anaplastic carcinoma. The components of adenocarcinoma presented as a solid tumor. A part of the anaplastic carcinoma component developed cystic degeneration, and the other part penetrated and proliferated into the MPD.

Anaplastic carcinoma with intraductal growth into the MPD is so rare that only 9 cases, including our case, have been reported in the English literature<sup>[11-18]</sup> (Table 1). Only our case was the giant cell type of the anaplastic carcinoma. All cases except for the cases with the osteoclastic giant cell type were associated with a poor prognosis.

The prognosis of anaplastic carcinoma of the pancreas is worse than that of poorly differentiated ductal adenocarcinoma of the pancreas<sup>[3,8,19]</sup>. Reyes *et al.*<sup>[20]</sup> reported that the median survival time of pleomorphic giant cell carcinoma patients was three months. Strobel *et al.*<sup>[4]</sup> suggested that the median duration of survival was significantly prolonged af-



**Figure 5** Microscopic appearance of the tumor. Hematoxylin and eosin staining showed adenocarcinoma (tub1, tub2) in the white component, bizarre mono- and multi-nucleated giant cells in the dark reddish-brown component and a projecting tumor into the main pancreatic duct. A: the white component; B: the dark red-brown component; C: the projecting tumor.

**Table 1** Reported cases of anaplastic carcinoma with intraductal growth in the main pancreatic duct

Case	Author	Year	Age (yr)	Sex	Location	Size (mm)	Subtype	Treatment	Outcome (mo)
1	Higuchi <i>et al</i> <sup>[11]</sup>	2004	65	F	Pbt	110	spindle	DP	dead (4)
2	Tezuka <i>et al</i> <sup>[12]</sup>	2006	68	F	Ph	42	osteoclastic	PD	alive (22)
3	Suzuki <i>et al</i> <sup>[13]</sup>	2007	71	M	Ph	35	pleomorphic	PPPD	dead (1)
4	Kuroda <i>et al</i> <sup>[14]</sup>	2007	59	M	Ph	100	pleomorphic	PD	dead (2)
5	Nara <i>et al</i> <sup>[15]</sup>	2009	79	F	Phb	116	osteoclastic	PPPD	alive (14)
6	Maksymov <i>et al</i> <sup>[16]</sup>	2011	68	F	Ph	30	osteoclastic	PD	alive (36)
7	Ishii <i>et al</i> <sup>[17]</sup>	2012	61	M	Ph	32	osteoclastic	PD	alive (14)
8	Yamano <i>et al</i> <sup>[18]</sup>	2013	63	F	Pb	850	pleomorphic	DP	dead (4)
9	Our case	2013	76	M	Pbt	600	giant cell	DP	alive (12)

M: Male; F: Female; Ph: Pancreatic head; Pb: Pancreatic body; Pt: Pancreatic tail; Phb: Pancreatic head and body; Pbt: Pancreatic body and tail; DP: Distal pancreatectomy; PD: Pancreatoduodenectomy; PPPD: Pylorus-preserving pancreatoduodenectomy.

ter R0/R1 resection, as compared with palliative surgery (7.1 mo *vs* 2.3 mo). We recommend that patients with anaplastic carcinomas of the pancreas should be offered pancreatic resection whenever possible. Due to its aggressive nature and ability to rapidly recur, the benefits of radiotherapy and chemotherapy have not yet been demonstrated<sup>[21,22]</sup>. Sporadic case reports have demonstrated a reduction of the tumor mass and prolongation of survival by treatments with 5-fluorouracil, gemcitabine, paclitaxel and radiation<sup>[23-25]</sup>. However, there is insufficient evidence to recommend any particular treatment, except for surgical resection.

In conclusion, we herein reported a very rare case of anaplastic carcinoma with remarkable intraductal tumor growth into the MPD. This case presented unique features and might help us to better understand the pathogenesis of

this rare entity.

## COMMENTS

### Case characteristics

A 76-year-old male was admitted to our hospital for further investigation of a pancreatic tumor, but he had no significant symptoms.

### Clinical diagnosis

This case was diagnosed as an intraductal papillary mucinous neoplasm of the pancreas.

### Differential diagnosis

Adenocarcinoma of pancreatic was mentioned in the differential diagnosis.

### Laboratory diagnosis

The laboratory findings revealed that the serum carbohydrate antigen was elevated to 57 U/mL, but the other tumor markers, carcinoembryonic antigen and DUPAN-II, were all within the normal ranges.

### Imaging diagnosis

Computed tomography, endoscopic ultrasonography, magnetic resonance imaging, endoscopic retrograde cholangiopancreatography and intraductal ultrasonography showed significant dilatation of the main pancreatic duct (MPD) from the body to the tail of the pancreas, and an elliptic filling defect in the MPD.

### Pathological diagnosis

Hematoxylin and eosin staining showed that the part of the tumor presenting a white surface consisted of an adenocarcinoma (tub1, tub2) component, and the part of the tumor presenting the dark reddish-brown surface consisted of anaplastic carcinoma (giant cell type).

### Treatment

Distal pancreatectomy with splenectomy was performed in this case.

### Related reports

Only 9 cases of anaplastic carcinoma with intraductal growth into the MPD, including our case, have been reported in the English literature.

### Term explanation

Anaplastic carcinoma with intraductal growth into the MPD is rare.

### Experiences and lessons

Anaplastic carcinomas are highly malignant tumors, and the authors will follow up the patient closely and continuously.

### Peer review

This case presented unique features and might help us to better understand the pathogenesis of this rare entity.

## REFERENCES

- Chen J, Baithun SI. Morphological study of 391 cases of exocrine pancreatic tumours with special reference to the classification of exocrine pancreatic carcinoma. *J Pathol* 1985; **146**: 17-29 [PMID: 2989468 DOI: 10.1002/path.1711460103]
- Ichikawa T, Federle MP, Ohba S, Ohtomo K, Sugiyama A, Fujimoto H, Haradome H, Araki T. Atypical exocrine and endocrine pancreatic tumors (anaplastic, small cell, and giant cell types): CT and pathologic features in 14 patients. *Abdom Imaging* 2000; **25**: 409-419 [PMID: 10926196 DOI: 10.1007/s002610000058]
- Paal E, Thompson LD, Frommelt RA, Przygodzki RM, Hefless CS. A clinicopathologic and immunohistochemical study of 35 anaplastic carcinomas of the pancreas with a review of the literature. *Ann Diagn Pathol* 2001; **5**: 129-140 [PMID: 11436166 DOI: 10.1053/adpa.2001.25404]
- Strobel O, Hartwig W, Bergmann F, Hinz U, Hackert T, Grenacher L, Schneider L, Fritz S, Gaida MM, Büchler MW, Werner J. Anaplastic pancreatic cancer: Presentation, surgical management, and outcome. *Surgery* 2011; **149**: 200-208 [PMID: 20542529 DOI: 10.1016/j.surg.2010.04.026]
- Clark CJ, Graham RP, Arun JS, Harmsen WS, Reid-Lombardo KM. Clinical outcomes for anaplastic pancreatic cancer: a population-based study. *J Am Coll Surg* 2012; **215**: 627-634 [PMID: 23084492 DOI: 10.1016/j.jamcollsurg.2012.06.418]
- Sommers SC, MEISSNER WA. Unusual carcinomas of the pancreas. *AMA Arch Pathol* 1954; **58**: 101-111 [PMID: 13170907]
- Moore JC, Bentz JS, Hilden K, Adler DG. Osteoclastic and pleomorphic giant cell tumors of the pancreas: A review of clinical, endoscopic, and pathologic features. *World J Gastrointest Endosc* 2010; **2**: 15-19 [PMID: 21160673 DOI: 10.4253/wjge.v2.i1.15]
- Tschang TP, Garza-Garza R, Kissane JM. Pleomorphic carcinoma of the pancreas: an analysis of 15 cases. *Cancer* 1977; **39**: 2114-2126 [PMID: 870168 DOI: 10.1002/1097-0142(197705)39:5<2114::AID-CNCR2820390528>3.0.CO;2-3]
- Pan ZG, Wang B. Anaplastic carcinoma of the pancreas associated with a mucinous cystic adenocarcinoma. A case report and review of the literature. *JOP* 2007; **8**: 775-782 [PMID: 17993730]
- Bosman FT, Carneiro F, Hruban RH, Theise N. WHO Classification of Tumours of the Digestive System. Lyon: IARC, 2010
- Higuchi R, Hatori H, Fukuda A, Imaizumi T, Takasaki K, Itabashi M. A case of spindle cell type anaplastic carcinoma of the pancreas. *Suizo* 2004; **19**: 516-521
- Tezuka K, Yamakawa M, Jingu A, Ikeda Y, Kimura W. An unusual case of undifferentiated carcinoma in situ with osteoclast-like giant cells of the pancreas. *Pancreas* 2006; **33**: 304-310 [PMID: 17003654 DOI: 10.1097/01.mpa.0000235303.11734.2a]
- Suzuki S, Harada N, Suzuki M, Hanyu F. A case of pleomorphic carcinoma of the pancreas. *Suizo* 2007; **22**: 137-142
- Kuroda N, Iwamura S, Fujishima N, Ohara M, Hirouchi T, Mizuno K, Hayashi Y, Lee GH. Anaplastic carcinoma of the pancreas with rhabdoid features and hyaline globule-like structures. *Med Mol Morphol* 2007; **40**: 168-171 [PMID: 17874050 DOI: 10.1007/s00795-006-0349-0]
- Nara S. A case of anaplastic carcinoma of the pancreas with portal vein tumor thrombus. *Jpn J Clin Oncol* 2010; **40**: 96-97 [PMID: 20044390 DOI: 10.1093/jjco/hyp189]
- Maksymov V, Khalifa MA, Bussey A, Carter B, Hogan M. Undifferentiated (anaplastic) carcinoma of the pancreas with osteoclast-like giant cells showing various degree of pancreas duct involvement. A case report and literature review. *JOP* 2011; **12**: 170-176 [PMID: 21386647]
- Ishii S, Kobayashi G, Fujita N, Noda Y, Ito K, Horaguchi J, Koshita S, Kanno Y, Ogawa T, Masu K, Hashimoto S, Sawai T, Uzuki M. Undifferentiated carcinoma of the pancreas involving intraductal pedunculated polypoid growth. *Intern Med* 2012; **51**: 3373-3377 [PMID: 23257522]
- Yamano T, Hirai R, Kuroda M, Takagi S, Ikeda E, Tsuji H. A case of anaplastic ductal carcinoma with tumor thrombus in the main pancreatic duct. *J Japan Surg Assoc* 2013; **74**: 1053-1059
- Molberg KH, Heffess C, Delgado R, Albores-Saavedra J. Undifferentiated carcinoma with osteoclast-like giant cells of the pancreas and periampullary region. *Cancer* 1998; **82**: 1279-1287 [PMID: 9529019 DOI: 10.1002/(SICI)1097-0142(199804)82:7<1279::AID-CNCR10>3.0.CO;2-3]
- Reyes CV, Crain S, Wang T. Pleomorphic giant cell carcinoma of the pancreas: a review of nine cases. *J Surg Oncol* 1980; **15**: 345-348 [PMID: 7453183 DOI: 10.1002/jso.2930150407]
- Singhal A, Shrago SS, Li SF, Huang Y, Kohli V. Giant cell tumor of the pancreas: a pathological diagnosis with poor prognosis. *Hepatobiliary Pancreat Dis Int* 2010; **9**: 433-437 [PMID: 20688610]
- Leighton CC, Shum DT. Osteoclastic giant cell tumor of the pancreas: case report and literature review. *Am J Clin Oncol* 2001; **24**: 77-80 [PMID: 11232955 DOI: 10.1097/00000421-200102000-00014]
- Yoshioka M, Uchinami H, Watanabe G, Takahashi T, Nakagawa Y, Andoh H, Yoshioka T, Nanjo H, Yamamoto Y. Effective use of gemcitabine in the treatment of undifferentiated carcinoma with osteoclast-like giant cells of the pancreas with portal vein tumor thrombus. *Intern Med* 2012; **51**: 2145-2150 [PMID: 22892493 DOI: 10.2169/internalmedicine.51.7670]
- Matsuzawa G, Shirabe K, Gion T, Tsujita E, Ooya M, Kajiyama K, Nagaie T. Surgically resected undifferentiated carcinoma with osteoclast-like giant cells of the periampullary region involving the orifice of the papilla of Vater: Report of a case. *Surg Today* 2010; **40**: 376-379 [PMID: 20339995 DOI: 10.1007/s00595-009-4078-6]
- Wakatsuki T, Irisawa A, Imamura H, Terashima M, Shibukawa G, Takagi T, Takahashi Y, Sato A, Sato M, Ikeda T, Suzuki R, Hikichi T, Obara K, Ohira H. Complete response of anaplastic pancreatic carcinoma to paclitaxel treatment selected by chemosensitivity testing. *Int J Clin Oncol* 2010; **15**: 310-313 [PMID: 20195681 DOI: 10.1007/s10147-010-0038-9]

P- Reviewer: Vetvicka V S- Editor: Qi Y L- Editor: Ma JY  
E- Editor: Liu XM





百世登

**Baishideng**®

Published by **Baishideng Publishing Group Co., Limited**

Flat C, 23/F., Lucky Plaza,

315-321 Lockhart Road, Wan Chai, Hong Kong, China

Fax: +852-65557188

Telephone: +852-31779906

E-mail: [bpgoffice@wjgnet.com](mailto:bpgoffice@wjgnet.com)

<http://www.wjgnet.com>



ISSN 1007-9327



9 771007 932045